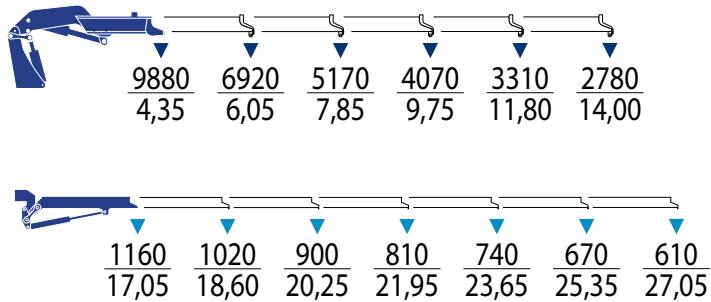


# PM 48525 SP + J1216.20

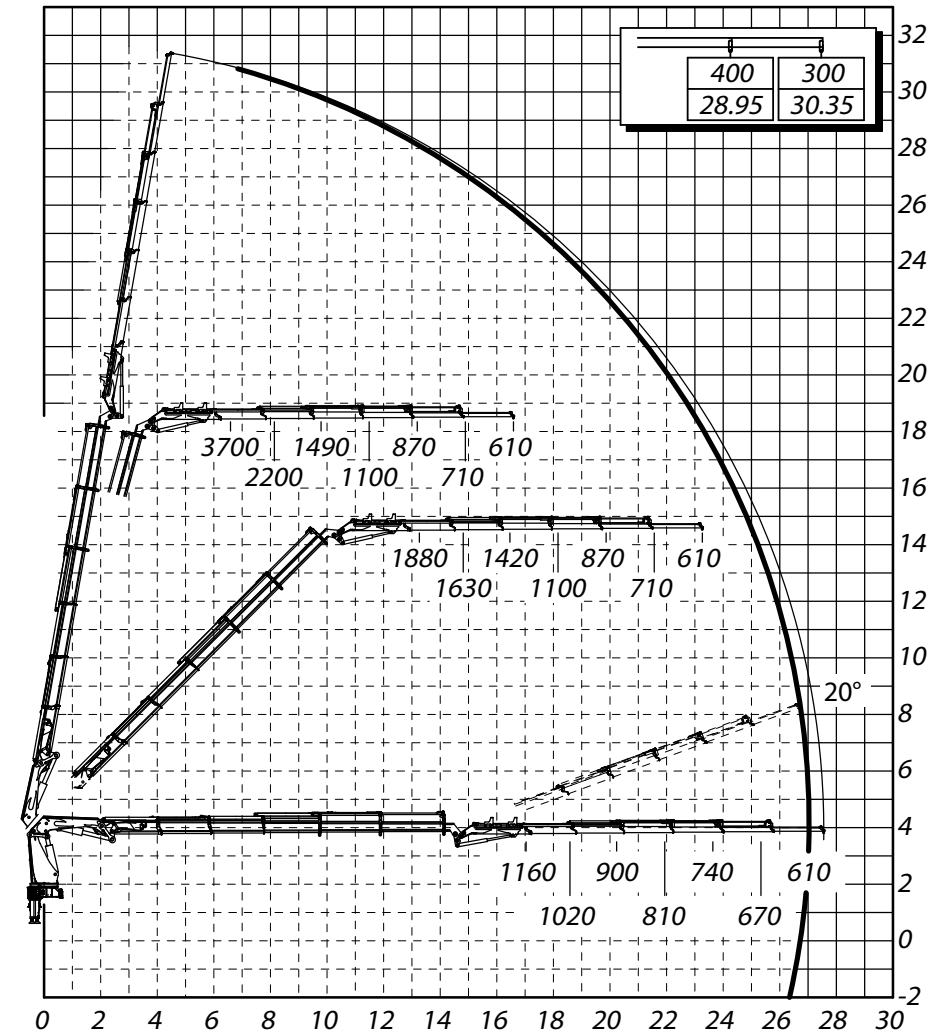


## Lifting Capacity

Portata Macchina Base • Tragfähigkeit • Capacité de levage • Capacidad de elevación



| t m  | m     | l/min  | MPa  | ° | kg   | mm   | mm   | mm   |
|------|-------|--------|------|---|------|------|------|------|
| 43,0 | 27,55 | 80÷100 | 33,0 | ∞ | 6260 | 2550 | 2770 | 1630 |



# PM 48525 SP + J1216.20



[www.tadano.com](http://www.tadano.com)

**Tadano Ltd.**

Kanda Square 18th Floor, 2-2-1 Kanda-Nishikicho, Chiyoda-ku, Tokyo 101-0054, Japan  
Phone: +81-3-6811-7309 (International Division)

**PM OIL & STEEL S.P.A.**

Via G. Verdi, 22 - 41018 - San Cesario sul Panaro (Modena) - Italy



Reaching new heights

