



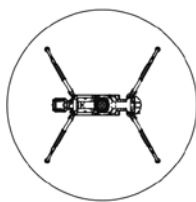
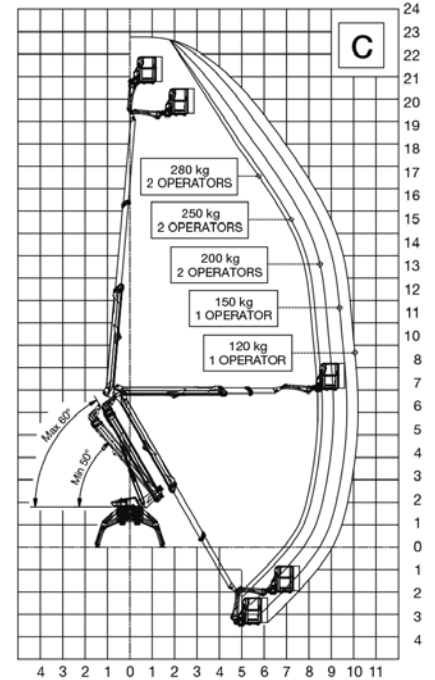
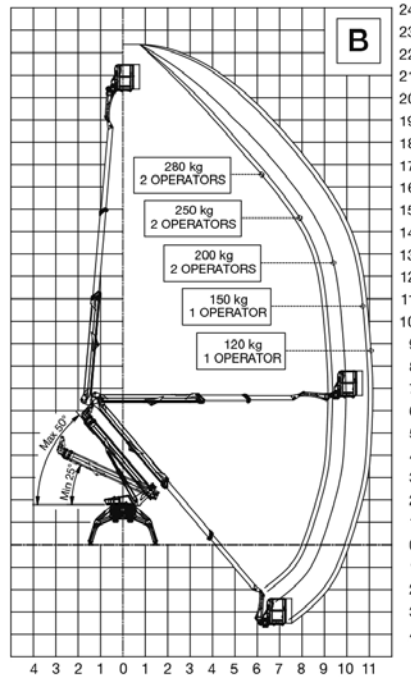
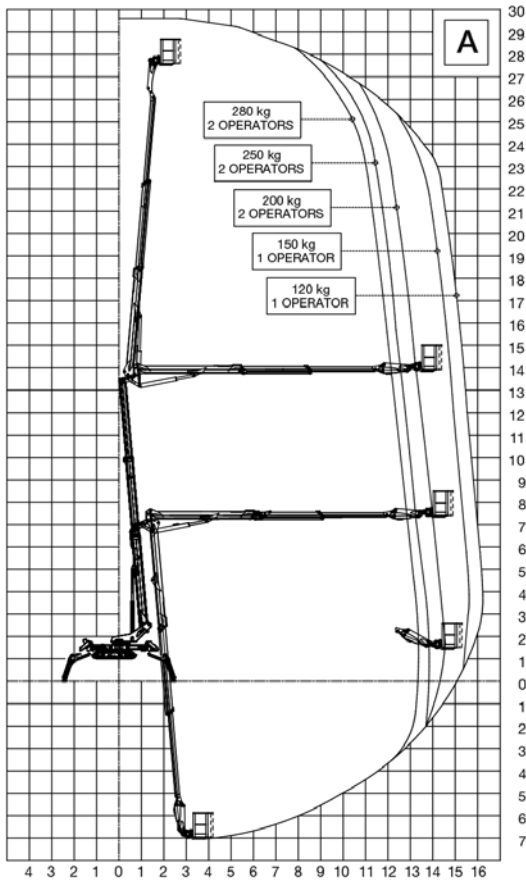
OCTOPLUS 30



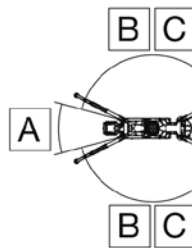
Octopus 30

Tracked aerial work platforms

WORKING AREA



A

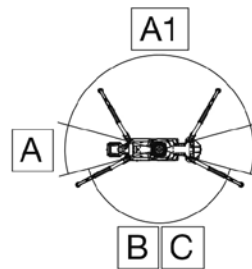


B C

A

A

B C

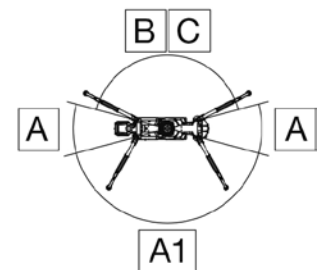


A1

A

A

B C



B C

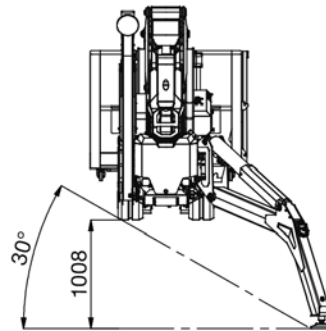
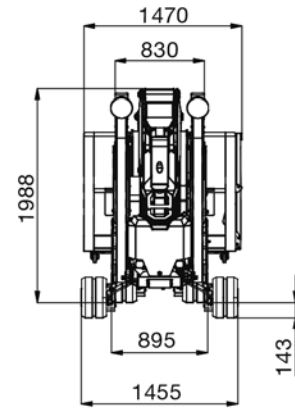
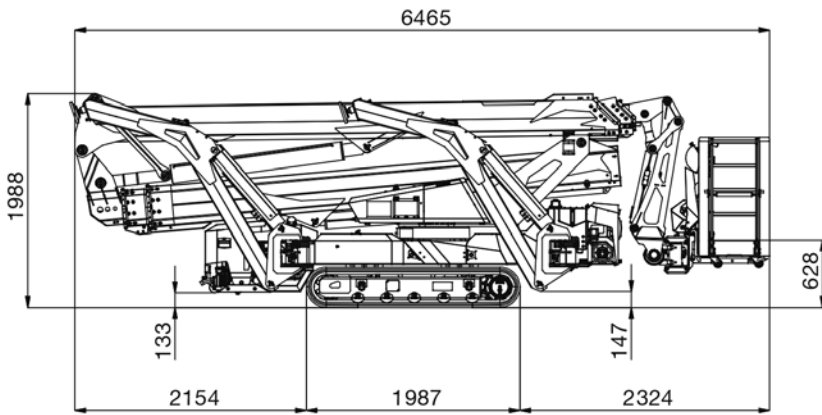
A

A

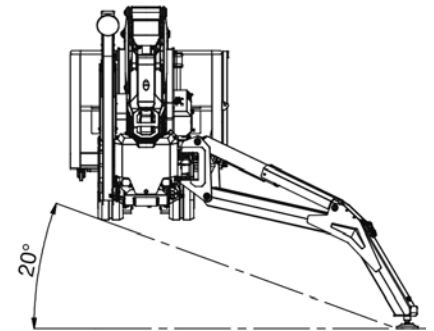
A1

A1 = A with lower boom minimum angle of 25°

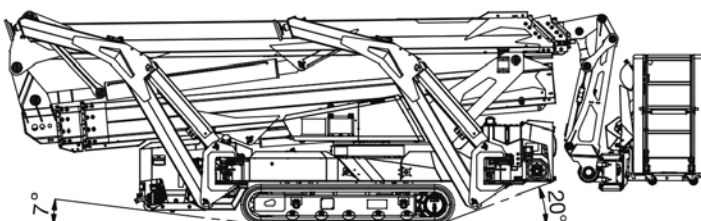
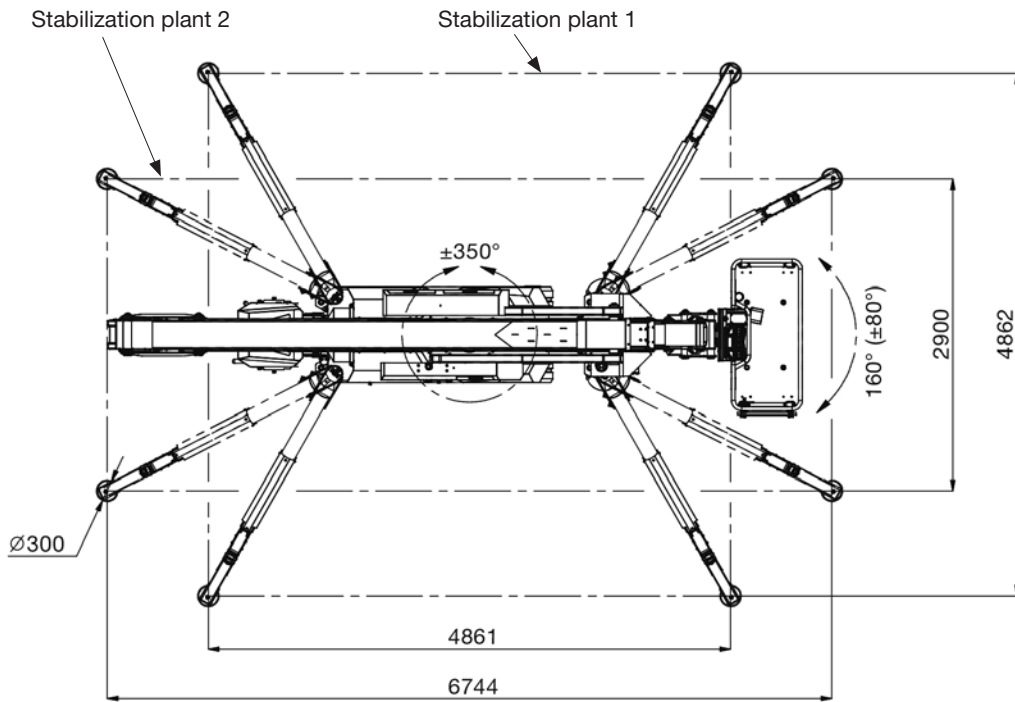
TECHNICAL DRAWINGS



Stabilization plant 2



Stabilization plant 1



SPECIFICATIONS

Max working height	29.6 m	Basket height	1.1 m
Maximum basket floor height	27.6 m	Basket length	1.4 m
Max outreach	16.3 m	Basket width	0.7 m
Up and over clearance – scissor	13.5 m	Machine length (stowed)	6.47 m
Max capacity	280 kg	Machine length without basket (stowed)	5.79 m
Basket controls	Radio remote control	Machine height (stowed)	1.98 m
Outrigger and tracked undercarriage controls	Radio remote control	Minimum overall width (stowed)	0.9 m
Basket (materials and dimensions)	Aluminium basket 1400 x 1100 x 700 mm max occupancy: 2 persons	Maximum ground clearance	0.26 m
Jib - working angle	180°	Track size	1.99 x 0.25 m
Jib – rotation angle	NA	Outrigger footprint (fully extended)	4.86 x 4.86 m
Basket – rotation angle	+/- 80°	Outrigger footprint (partially extended)	3.9 x 6.74 m
Turret – rotation angle	+/- 350° (700°)	Outrigger footprint (retracted)	2.9 x 6.74 m
Outrigger setup possible on slopes up to	30°	Outrigger plates – dimensions	Ø 0.3 m
Chassis height with outriggers deployed	1.0 m	Min weight	4750 kg
Track width (retracted – extended)	0.9 – 1.46 m	Max track ground pressure	1.1 daN/cm ²
Gradeability – traveling	35%	Max outrigger ground pressure	4.4 daN/cm ²
Max travel speed	2.5 km/h	Maximum reaction force on outriggers	3000 daN
Working envelope – Variable outrigger setup	4 outrigger configurations	Combustion engine (STD)	Kubota D902-K diesel engine, 25 HP
Homing / Memory function	✓	Fuel tank	22 L
Automatic stabilization	✓	Electric motor (STD)	Single-phase 3 kW 230 V AC
Loading/unloading function	✓	Combustion engine (OPT)	NA
Electric emergency lowering	✓	Hybrid power system (internal combustion engine + battery pack)	Optional

EQUIPMENT

3 travel speeds	Engine start via radio remote control or turret display
7" touchscreen display on turret with protective cover	Homing function and memory function
12 V DC emergency electric pump, 1.6 kW	Hoses and cables routed inside the boom
22 L diesel fuel tank	Hour meter
70 L hydraulic oil tank	Jib with 180° articulation range
230 V AC power socket in the basket with RCBO	Load cell bypass
Ø 300 mm outrigger plate	Load-holding valves on all cylinders
AGM 95 Ah battery	Loading/unloading for trailer and truck bed loading
Aluminium basket, 1.4 m, with access ladder	Load limiting system
Anti-collision system between extendable structure and chassis	Manual pump for emergency lowering
Automatic stabilization	Metal protective covers for turret and basket controls
Auto-opening function	Outrigger deployment and travelling from the basket
Basket electronic auto-leveling system	Pressure relief valve in hydraulic circuit
Basket hydraulic rotation 80° right – 80° left with rotary actuator	Quick-release protection covers for chassis
Black tracks	Radio remote control with display and charger on the turret
Boom angle/telescopic extension limitation system	Removable basket with transport wheels
Corrosion protection for structural components and stainless steel fasteners	Single air and water line
Dual USB charging ports in the basket	Single-phase electric motor 230 V AC / 50 Hz / 3 kW
Electro-hydraulic controls	Start button on turret
Electronic engine RPM control	Thermal protection for the electrical system
Emergency push-button panel for basket control functions located on the turret	Tracks with variable displacement motors and braking system
Emergency stop button bypass	Variable geometry tracked undercarriage with independent diagonal track extension
Emergency stop button with engine shutdown on turret and in radio remote control	Variable outrigger footprint: extended, partially extended and retracted
	White and blue standard paint (RAL 9016 white – RAL 5002 blue)

OPTIONAL

12 V DC floodlight in the basket	Logo customization on 7" display and radio remote control
Ø 200 mm outrigger plate	Non-standard paint finish
Customer-specific decals	Remote connectivity kit (5 year subscription)
Deadman foot pedal in the basket	Safety harness kit, 2 pieces
Debris protection kit for telescopic boom	Single-phase 120 V AC power socket on basket with RCBO
Extended warranty	Travel lights
Hybrid power system (internal combustion engine + battery pack)	White non-marking tracks
Load distribution plates with retaining sleeve	

www.tadano.com

Tadano Ltd.

Kanda Square 18th Floor, 2-2-1 Kanda-Nishikicho, Chiyoda-ku, Tokyo 101-0054, Japan
Phone: +81-3-6811-7309 (international Division)

PM OIL & STEEL S.P.A.

Via G. Verdi, 22 - 41018 - San Cesario sul Panaro (Modena) - Italy

