

# AT-170TG

**Maximum working height**  
19.2 m

**Maximum basket bottom height**  
17.2 m

**Maximum bucket loading capacity**  
200 kg or two (2) persons



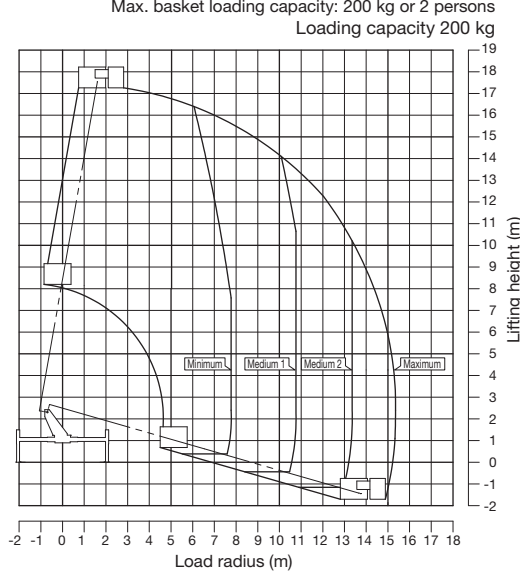
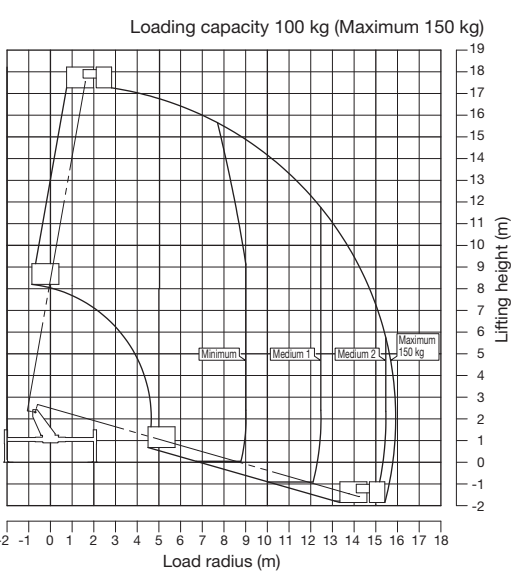
# MODEL: AT-170TG

## SPECIFICATIONS

MAX. BASKET BOTTOM HEIGHT	17.2 m
Basket EQUIPMENT	
Basket	Pipe made (or FRP made)
Inside dimensions	0.7 m x 1.2 m x 0.9 m (L x W x D)
Capacity	200 kg or two (2) persons
Automatic leveling system	By hydraulic cylinders.
Slewing angle	200° (Left 97°, Right 103°)
BOOM	3-section full power synchronized telescoping boom of box construction. The synchronization system consists of a double-acting hydraulic cylinder, an extension cable and a retraction cable. Hydraulic cylinder fitted with a holding valve and a pilot check valve.
Fully retracted length	6.20 m
Fully extended length	15.40 m
Extension speed	9.20 m in 44 s
ELEVATION	By a double-acting hydraulic cylinder, fitted with a holding valve.
Elevation speed	-16° to 80° in 35 s
SLEWING	Hydraulic motor driven through worm reduction gear. 360° continuous in either direction on ball bearing slew ring.
Slewing speed	1.2 min <sup>-1</sup> {rpm}
HYDRAULIC SYSTEM	
Pumps	Gear pump.
Control valves	Multiple remote-control valves actuated by electric remote control from slewing frame and basket.
Hydraulic oil tank capacity	Approx. 63 L
Filter	Return line filter

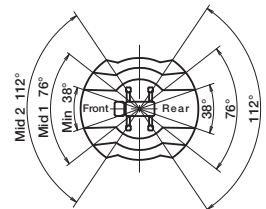
OUTRIGGERS	4 hydraulically operated outriggers. Each outrigger controlled simultaneously or independently from rear side of carrier. Equipped with sight level gauge. Floats mounted integrally with the jacks and retract to within vehicle width. All cylinders fitted with pilot check valves.
Fully extended width	4.1 m
SAFETY DEVICES	<ul style="list-style-type: none"> <li>• Automatic moment limiter (AMC)</li> <li>• Boom profile monitor system (Prevent hitting vehicle by boom and by basket)</li> <li>• Automatic speed control system on boom elevation and slewing</li> <li>• Automatic speed reduction and slow stop function on boom elevation, slewing and telescoping</li> <li>• Automatic acceleration</li> <li>• Boom vertical/horizontal movement device</li> <li>• Boom and basket automatic stowing</li> <li>• Emergency pump</li> <li>• Emergency stop system</li> <li>• Parking brake alarm, PTO connect alarm (when drive)</li> <li>• Jack interlock</li> <li>• Boom interlock</li> <li>• Outrigger indicator</li> <li>• Hydraulic cylinder lock valves</li> <li>• Hydraulic safety valves</li> <li>• Level gauge</li> <li>• Guard for operation levers</li> <li>• Foot switch (on basket)</li> </ul>
ACCESSORIES	<ul style="list-style-type: none"> <li>• Hour meter</li> <li>• Rubber blocks (for outriggers)</li> <li>• Chocks</li> <li>• Safety belt</li> <li>• Grease pump</li> </ul>
OPTIONAL EQUIPMENT	<ul style="list-style-type: none"> <li>• Work light (on basket)</li> <li>• Elevation cylinder boot</li> <li>• Marker lamps (on outrigger jacks)</li> <li>• Wood block (for outriggers)</li> <li>• Tools</li> <li>• Limit warning lamp (three-color)</li> </ul>

## WORKING RANGE

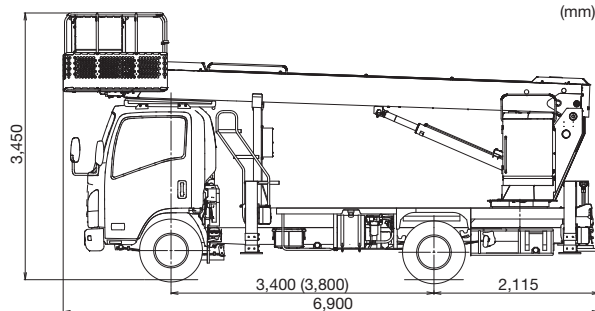
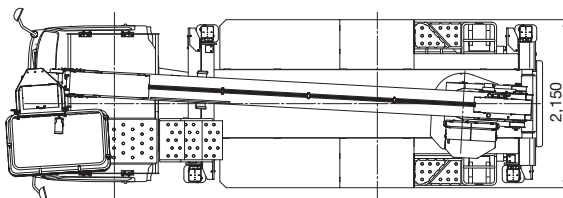


### NOTES:

- Working ranges shown are for a case where the aerial platform is set on a firm and level ground, and do not include boom deflection.
- Maximum, "Medium 2", "Medium 1" and "Minimum" indicates the corresponding outrigger extension widths.
- Working ranges shown are for lateral directions, those for longitudinal directions are same as the one for maximum outrigger extension width, regardless of outrigger extension.
- The applicable working range is different depending on the slewing angle as shown in the below illustration.



## DIMENSIONS (Approx.)



NOTE: Some specifications are subject to change.



Reaching new heights

### Tadano Ltd.

Kanda Square 18th Floor, 2-2-1 Kanda-Nishikicho,  
Chiyoda-ku, Tokyo 101-0054, Japan  
Phone: +81-3-6811-7309  
www.tadano.com