



**SNAKE 24**  
on Iveco Daily - 35S14H

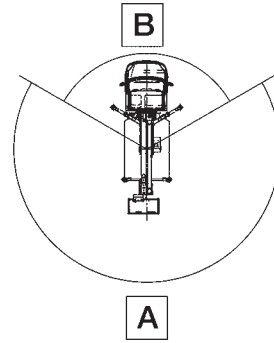
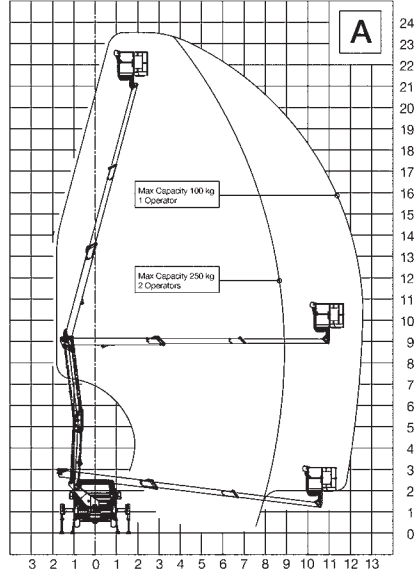
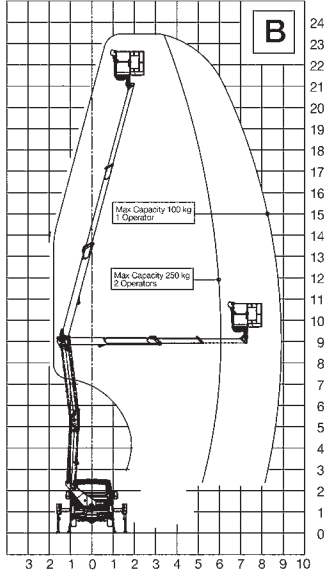


# Snake 24 on Iveco Daily - 35S14H

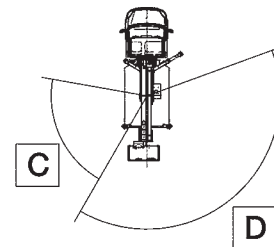
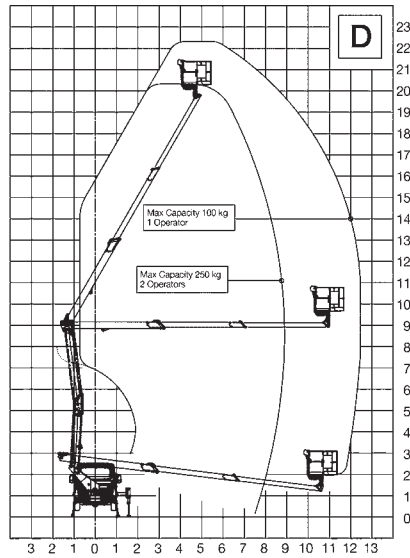
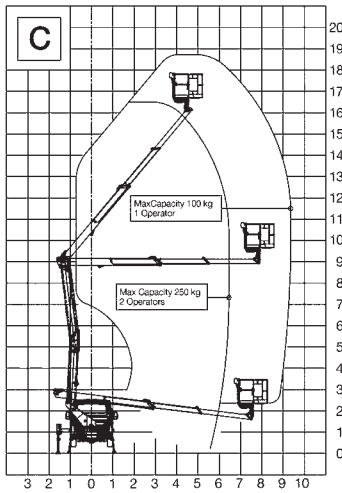
## Truck-mounted aerial work platform

### WORKING AREA

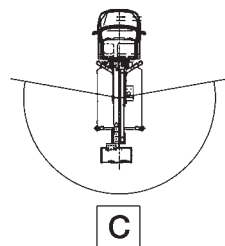
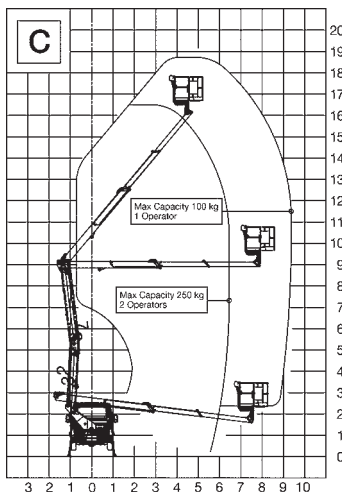
#### Front outrigger beams both extended



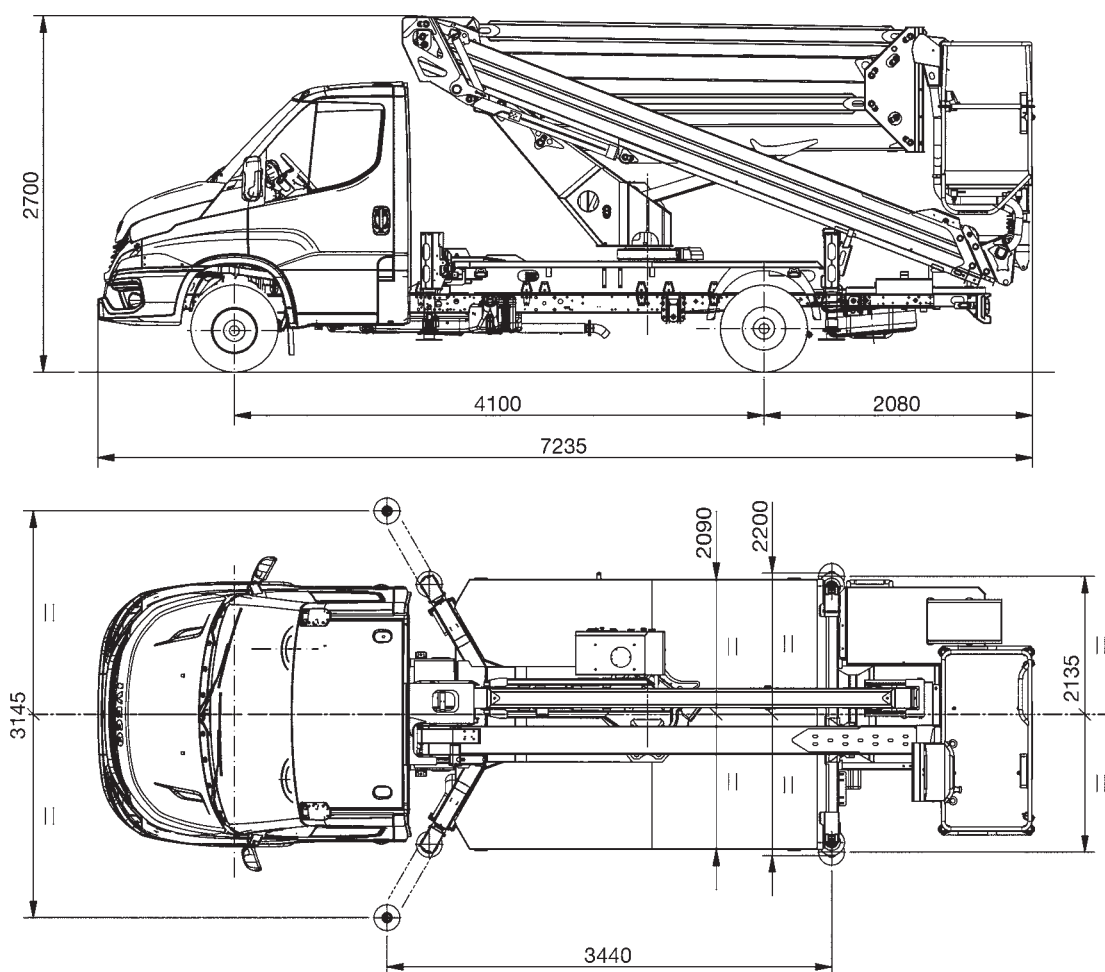
#### Front outrigger beams one extended and one retracted



#### Front outrigger beams both retracted



## TECHNICAL DRAWINGS



## SPECIFICATIONS

Max working height	23.5 m
Max outreach	12.6 m
Max capacity	250 kg
Basket (materials and dimensions)	Alu 1.4 x 1.1 x 0.7 m
Controls	Electro-hydraulic platform controls, hydraulic outriggers
Turret rotation	400°
Basket rotation	+/- 90°
Outriggers	HE - H
Machine length	7235 mm
Machine height	2700 mm
Machine width	2200 mm

## STANDARD EQUIPMENT

### Truck

Iveco Daily 35S14H MY24, wheelbase 4100 mm – GVWR 3.5 t	Active Lane Keeping Assist
136 HP (100 kW) Euro VIE HD engine	Start & Stop
6-speed mechanical gearbox	Automatic wiper and low beam headlight control
Single rear wheels	Electric parking brake
40 L diesel fuel tank	Comfort TFT display panel
Intelligent Speed Assistance (ISA)	Rear parking sensors
Driver drowsiness and alertness warning (DDAW + ADDW)	Driver and passenger airbag
Tyre Pressure Monitoring System (TPMS)	Tyres 235/65 R16

### Aerial Work Platform

Electric PTO engagement with automatic disengagement	Anti-collision system for extendable structure, cab and chassis
Audible warning when PTO is engaged and parking brake released	Variable stabilization (front beams: extended, retracted; one extended and one retracted)
PTO hour meter mounted on the vehicle dashboard	Manual pump for emergency lowering
Cab hour meter indicator lights displaying PTO engaged status and outriggers out of overall width	Emergency stop button bypass
Main engine (and optional auxiliary engine) start/stop from basket and turret	Outrigger plastic pads Ø 200 mm
Emergency stop button with engine shutdown in basket and turret	Hoses and cables routed inside the boom
Single-phase 220/110V AC power socket on basket with RCBO	Access ladder to basket
Electro-hydraulic controls for platform control functions	Aluminium basket 1400 x 1100 x 700 mm, max occupancy: 2 persons
Hydraulic controls for outriggers	Basket hydraulic rotation 90° right – 90° left with rotary actuator
Hydraulic extension of outrigger beams	Metal protective covers for turret and basket controls
Outrigger beam extension/retraction lock with outriggers deployed	Thermal protection for the electrical system
Push-button panel with levers in basket	Load-holding valves on all cylinders
Emergency push-button panel for platform control functions located on the vehicle deck	Pressure relief valve in hydraulic circuit
Load moment monitoring and limiting system	Anti-slip aluminium floor
Boom angle/telescopic extension limitation system	Corrosion protection for structural components and stainless steel fasteners
Homing function and memory function	White and blue standard paint (RAL 9016 white – RAL 5002 blue)

## OPTIONAL

### Truck

Non-standard cab paint finish

Comfort Pack (manual air conditioning, 7" radio with Bluetooth and steering wheel controls, fog lights, cruise control, seat with lumbar support and armrest)

All-season tyres

Electrically adjustable and heated external rear-view mirrors

### Aerial Work Platform

Fiberglass basket 1400 x 700 x 1100 mm (replacing the standard basket)

Fiberglass basket 1400 x 700 x 1100 mm, with 1 kV dielectric resistance (replacing the standard basket)

Fiberglass basket with door 1400 x 700 x 1100 mm, according to STBT200 standard (replacing the standard basket)

Basket control panel with levers and 4" display

Electro-hydraulic controls for outriggers and beams – automatic stabilization from basket

Automatic stabilization from ground (only available with electro-hydraulic outrigger controls)

7" touchscreen display on turret with protective cover (only available with electro-hydraulic outrigger controls)

Stabilizer jacks with increased stroke (replacing the standard component)

Multipurpose air/water line on basket

Oil tank protection

Set of 4 nylon outrigger mats

Outrigger mat holder kit, suitable for 300 x 300 x 40 mm mats

Safety belt kit, 2 pieces

Debris protection kit

12 V DC power socket on basket

12 V DC power socket + LED work light on basket

USB charging port on basket (only available with aluminium basket)

12 V DC emergency lowering electric pump – 1.6 kW

Single-phase auxiliary electric pump (220 V AC – 2.2 kW), including electric panel and battery charger powered from external mains

Single-phase auxiliary electric pump (110 V AC – 2.2 kW), including electric panel and battery charger powered from external mains

12 V yellow magnetic rotating beacon for truck cab

12 V blue magnetic rotating beacon for truck cab

2 x 12 V yellow rotating beacon for truck cab + bar

2 x 12 V yellow rotating beacon for truck cab + bar + warning triangle

Parking wheel chocks

Plastic tool box (480 x 400 x 400 mm)

Aluminium tool box (800 x 350 x 350 mm)

Bicycle carrier bars

White-red reflective marking

Fixed sides, 150/200 mm high, on vehicle deck

Single drop-side, 150/200 mm high, on vehicle deck

Two drop-sides, 150/200 mm high, on vehicle deck

Non-standard platform paint finish

Customer-specific decals

Remote connectivity kit (5 year subscription)

[www.tadano.com](http://www.tadano.com)

**Tadano Ltd.**

Kanda Square 18th Floor, 2-2-1 Kanda-Nishikicho, Chiyoda-ku, Tokyo 101-0054, Japan  
Phone: +81-3-6811-7309 (international Division)

**PM OIL & STEEL S.P.A.**

Via G. Verdi, 22 - 41018 - San Cesario sul Panaro (Modena) - Italy

