



TECHNICAL DATA | IMPERIAL

GTC-980

80 US TON MAX. CRANE CAPACITY

TADANO
GREEN
SOLUTIONS

- Suitable for alternative fuels





January 2025. Unless otherwise specified, all information in this brochure refers to a standard crane equipment, and it is intended as general information only. No liability is assumed. Errors reserved. Product specifications and prices are subject to changes without notice. The photographs and/or drawings in this brochure are for illustrative purposes only. For correct and safe crane operation, the original operating manual and lifting capacity charts are essential. Failure to follow the corresponding Operator's Manual when using our equipment or failure to otherwise act responsibly may result in property damage, serious injury or death. The sole warranty applicable with respect to our equipment is the standard warranty as per general terms and conditions of sales and service (ask your local Tadano dealer for details), and Tadano makes no other warranty, express or implied. All rights reserved. Any use of the trademarks, logos, brand names and model names used herein is prohibited.

© Tadano Ltd. 2025

Contents

Specifications	7
Vehicle dimensions	8-9
General dimensions	9
Transportation	11
Transport dimensions	12, 14
Transport plan	13, 15
Transport dimensions	16-18
Machine weights	19
Operation	21
Speeds and gradeability	22
Main winch and auxiliary winch performance	22
Hook blocks	23
MB: Main boom	24-28
HLJ: Heavy lift jib	30-31
FJ: Folding swing-away jib	32-34
WP: Work platform	36-37
Notes to Lifting Capacity	38
Technical Description	39
Crane specifications	40-41
Optional equipment	41

Key



	Counterweight		Jib offset angle
	Radius		Max. line pull
	Main boom		Rope length
	Folding swing-away jib		Rope
	Carbody counterweight		Hook block
	Overall width		Number of lines
	Roll / list angle		Assembly weight
	Total weight		Transport variant
	Hook block		Wire rope layer
	Overhaul ball		Total wire rope
	Travel speed		Winch layer diameter
	Gradeability		Wind speed in mph
	Working speeds		

Highlights



141.1' full power boom; 8.2' to 58.1' jib (tiltable from 3.5° to 45°)

Lifting capacities up to 4° out of level with full pick and carry

Jib capacities to 1.5° or 2.5° out of level depending on jib length

Dual hook operation with auxiliary nose sheave or jib

Powerful winches with 19 mm rope

Optional carbody jack system for tool-free self-rigging operation

Remote control for all rigging operations standard

Full crane operation remote optional

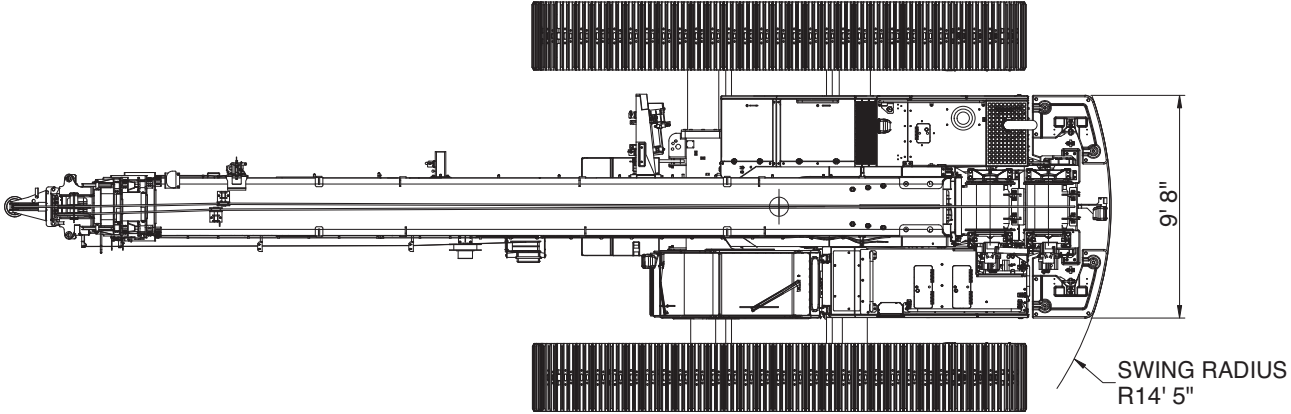
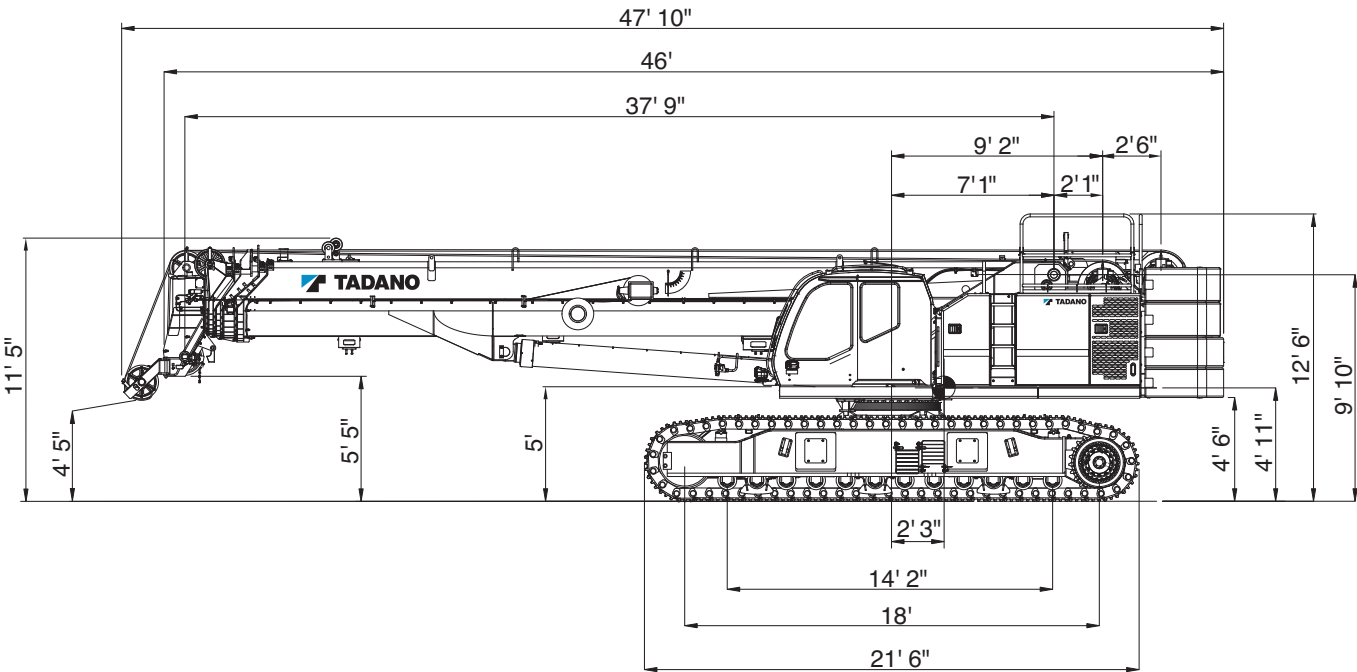
Best in class gradeability at 78 %

SPECIFICATIONS



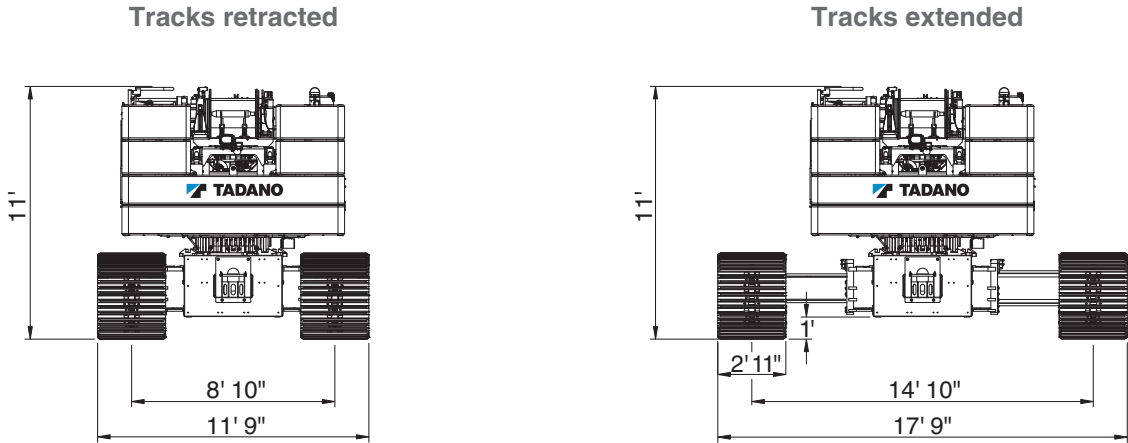
Specifications

Vehicle dimensions



Specifications

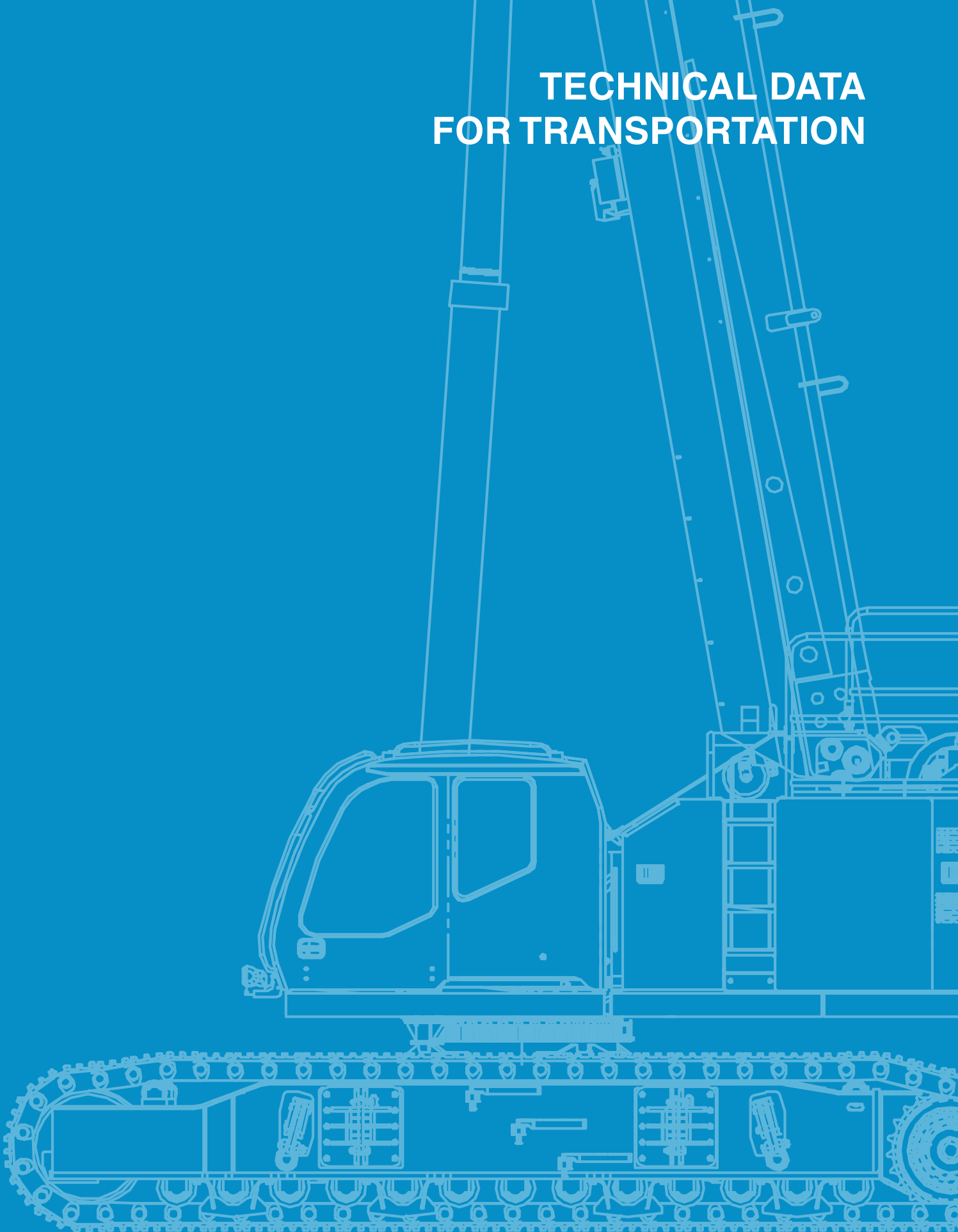
Vehicle dimensions



General dimensions

Overall length	46'
Overall width (tracks extended)	17' 9"
Overall width (tracks retracted)	11' 9"
Overall width (tracks removed)	9' 8"
Overall height (working)	12' 6"

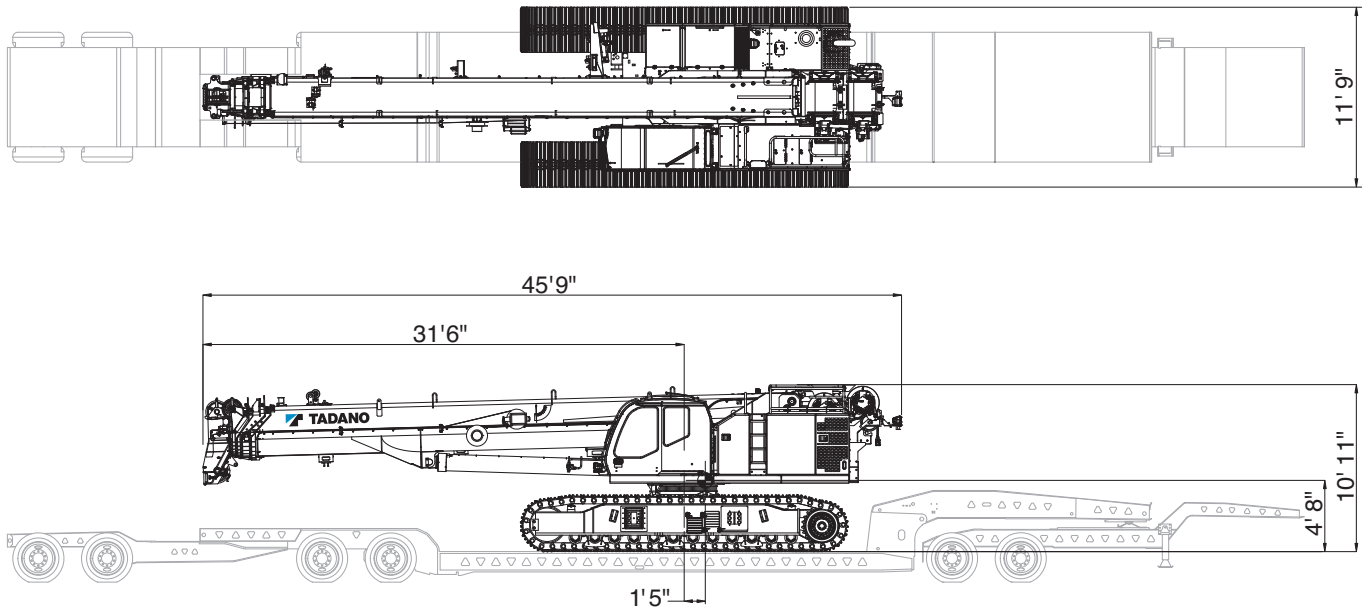
TECHNICAL DATA FOR TRANSPORTATION



Transportation

Transport dimensions


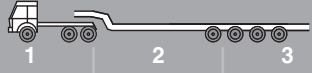
No carbody jacks



Transportation

Transport plan

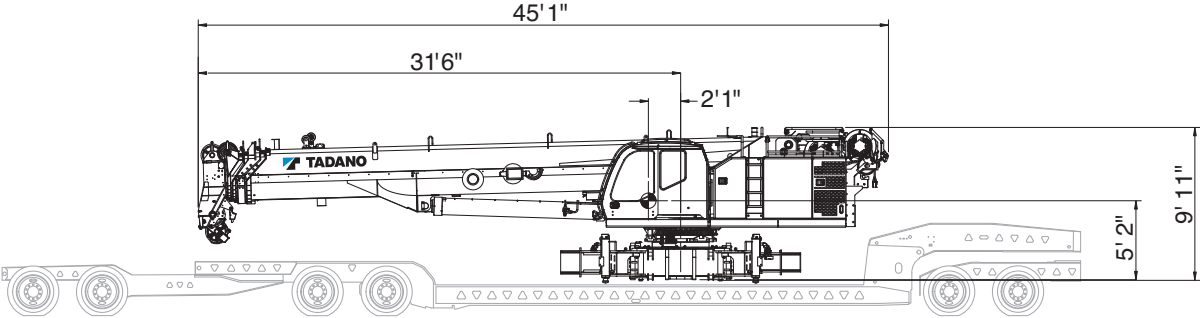
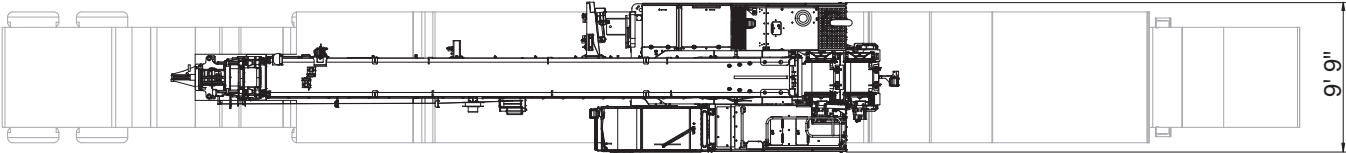
No carbody jacks – 3 trailers

	 lb	Dimensions L x W x H			
			1	2	3
Crane (with 2 winches, boom, wire rope, aux. nose sheave)	110,066	44' 11" x 11' 6" x 11' 0"	X		
Counterweight A - 1 piece	15,000	9' 8" x 3' 5" x 3' 8"		X	
Counterweight B - 1 piece	15,000	9' 8" x 3' 8" x 1' 6"		X	
Counterweight C - 1 piece	3,750	3' 0" x 3' 3" x 1' 6"			X
Counterweight C - 1 piece	3,750	3' 0" x 3' 3" x 1' 6"			X
Counterweight C - 1 piece	3,750	3' 0" x 3' 3" x 1' 6"			X
Counterweight C - 1 piece	3,750	3' 0" x 3' 3" x 1' 6"		X	
Counterweight - Carbody - 1 piece	10,000	3' 2" x 4' 3" x 2' 8"		X	
Counterweight - Carbody - 1 piece	10,000	3' 2" x 4' 3" x 2' 8"			X
Jib base section	2,030	34' 8" x 4' 10" x 3' 0"			X
Jib point	750	25' 9" x 2' 5" x 2' 5"			X
Hook block - 80 US ton	1,385	5' 2" x 2' 0" x 1' 6"			X
Overhaul ball - 8.8 US ton	440	2' 5" x 0' 11" x 0' 11"			X
Miscellaneous items (crate)	500	4' 0" x 3' 0" x 3' 0"			X
Total net weight on trailer			110,066 lb	43,750 lb	26,355 lb

Transportation

Transport dimensions

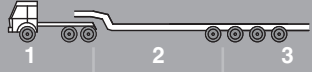
With carbody jacks




Transportation

Transport plan

With carbody jacks – tracks removed – 3 trailers

	lb	Dimensions L x W x H			
			1	2	3
Crane (with 2 winches, boom, wire rope, aux. nose sheave, tracks removed)	75,359	44' 11" x 9' 8" x 10' 1"	X		
Left track frame	19,325	2' 11" x 3' 0" x 3' 9"		X	
Right track frame	19,475	2' 11" x 3' 0" x 3' 9"			X
Counterweight A	15,000	9' 8" x 3' 5" x 3' 8"		X	
Counterweight B - 1 piece	15,000	9' 8" x 3' 8" x 1' 6"			X
Counterweight C - 1 piece	3,750	3' 0" x 3' 3" x 1' 6"			X
Counterweight C - 1 piece	3,750	3' 0" x 3' 3" x 1' 6"		X	
Counterweight C - 1 piece	3,750	3' 0" x 3' 3" x 1' 6"			X
Counterweight C - 1 piece	3,750	3' 0" x 3' 3" x 1' 6"		X	
Counterweight - Carbody - 1 piece	10,000	3' 2" x 4' 3" x 2' 8"	X		
Counterweight - Carbody - 1 piece	10,000	3' 2" x 4' 3" x 2' 8"	X		
Jib base section	2,030	34' 8" x 4' 10" x 3' 0"			X
Jib point	750	25' 9" x 2' 5" x 2' 5"		X	
Hook block - 80 US ton	1,385	5' 2" x 2' 0" x 1' 6"		X	
Overhaul ball - 8.8 US ton	440	2' 5" x 0' 11" x 0' 11"			X
Miscellaneous items (crate)	500	4' 0" x 3' 0" x 3' 0"			X
Total net weight on trailer			95,359 lb	43,960 lb	44,945 lb

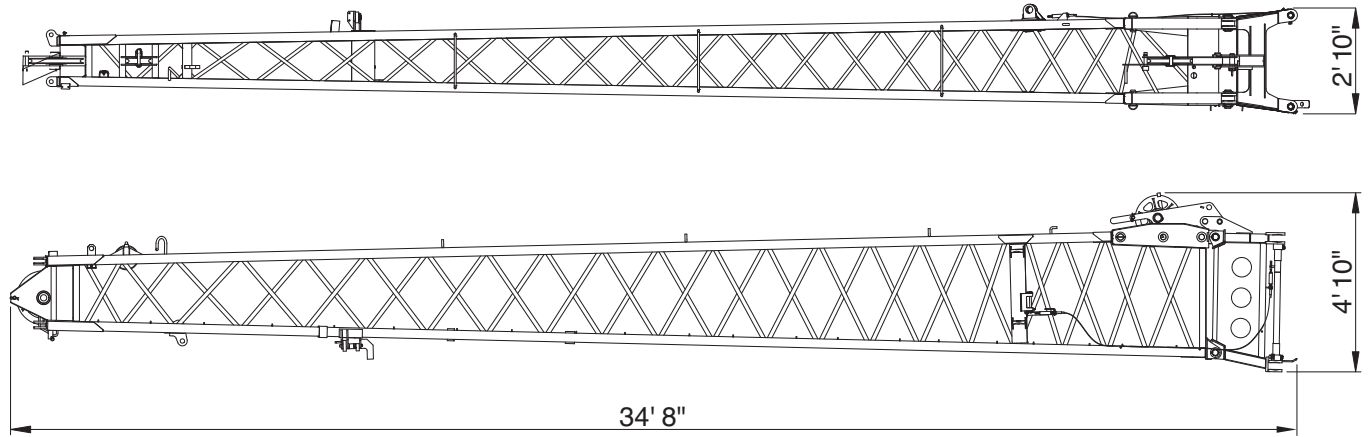
With carbody jacks – tracks removed – 4 trailers

	lb	Dimensions L x W x H				
			1	2	3	4
Crane (with 2 winches, boom, wire rope, aux. nose sheave, tracks removed)	75,359	44' 11" x 9' 8" x 10' 1"	X			
Left track frame	19,325	2' 11" x 3' 0" x 3' 9"		X		
Right track frame	19,475	2' 11" x 3' 0" x 3' 9"			X	
Counterweight A	15,000	9' 8" x 3' 5" x 3' 8"		X		
Counterweight B - 1 piece	15,000	9' 8" x 3' 8" x 1' 6"			X	
Counterweight C - 1 piece	3,750	3' 0" x 3' 3" x 1' 6"			X	
Counterweight C - 1 piece	3,750	3' 0" x 3' 3" x 1' 6"		X		
Counterweight C - 1 piece	3,750	3' 0" x 3' 3" x 1' 6"			X	
Counterweight C - 1 piece	3,750	3' 0" x 3' 3" x 1' 6"		X		
Counterweight - Carbody - 1 piece	10,000	3' 2" x 4' 3" x 2' 8"				X
Counterweight - Carbody - 1 piece	10,000	3' 2" x 4' 3" x 2' 8"				X
Jib base section	2,030	34' 8" x 4' 10" x 3' 0"			X	
Jib point	750	25' 9" x 2' 5" x 2' 5"		X		
Hook block - 80 US ton	1,385	5' 2" x 2' 0" x 1' 6"		X		
Overhaul ball - 8.8 US ton	440	2' 5" x 0' 11" x 0' 11"			X	
Miscellaneous items (crate)	500	4' 0" x 3' 0" x 3' 0"			X	
Total net weight on trailer			75,359 lb	43,960 lb	44,945 lb	20,000 lb

Transportation

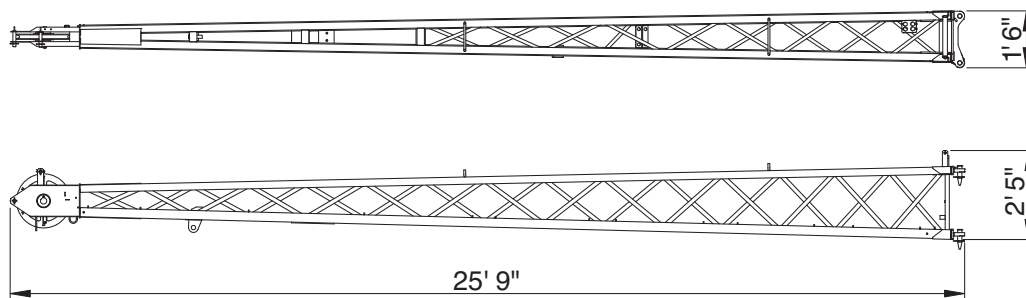
Transport dimensions

Extension 33' 3"



lb
2,030

Jib point 24' 8"

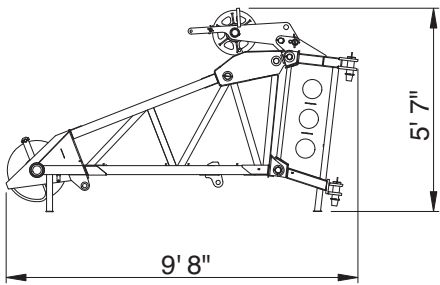
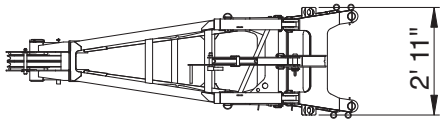


lb
750

Transportation

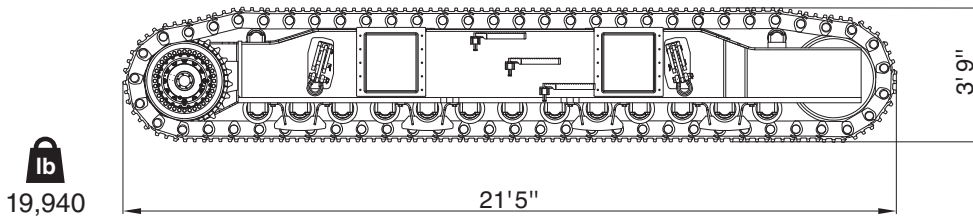
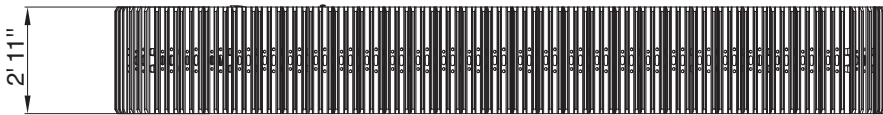
Transport dimensions

Heavy lift jib 8' 2"



lb
972

Track frame assembly

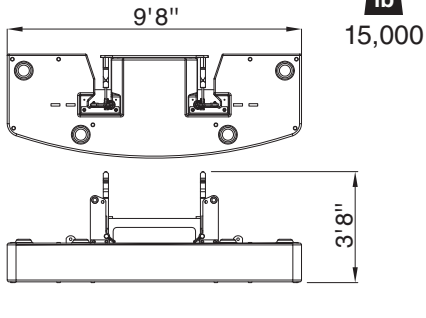


lb
19,940

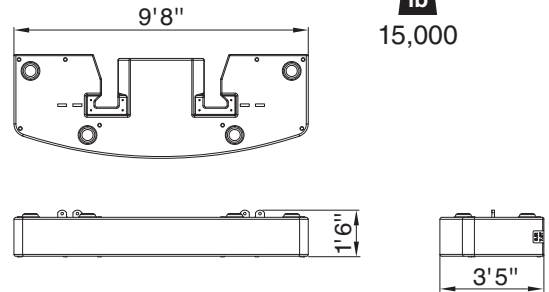
Transportation

Transport dimensions

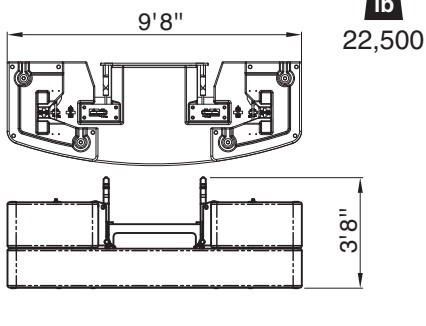
Configuration „A“



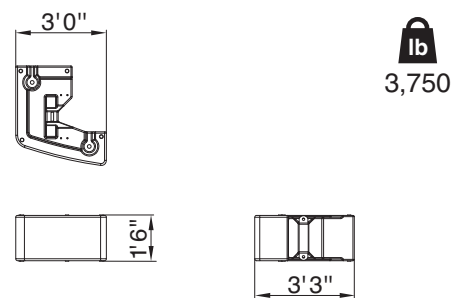
Counterweight „B“ section



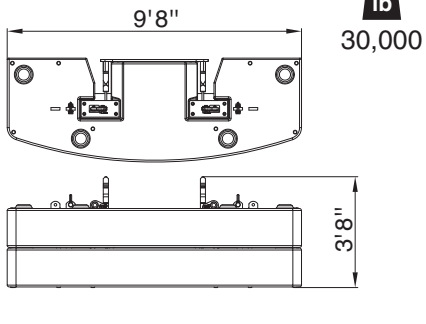
Configuration „A+“



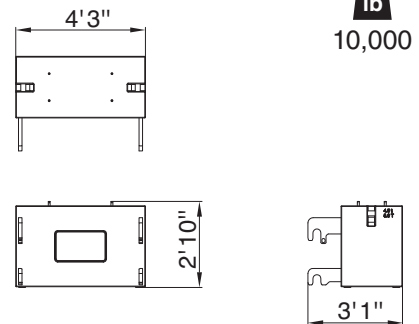
Counterweight „C“ section – 4 pieces



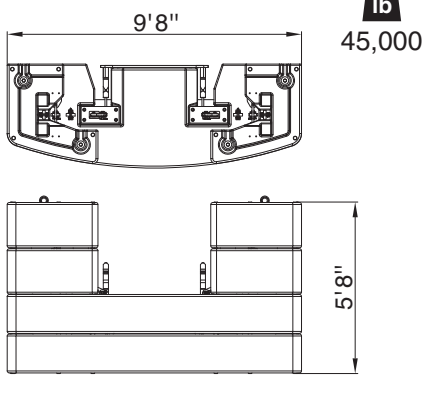
Configuration „B“



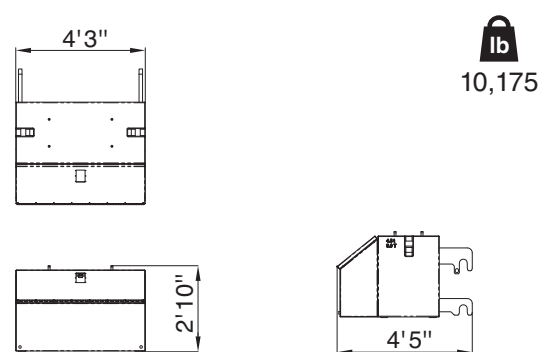
Carbody counterweight



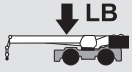
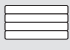







Configuration „C“



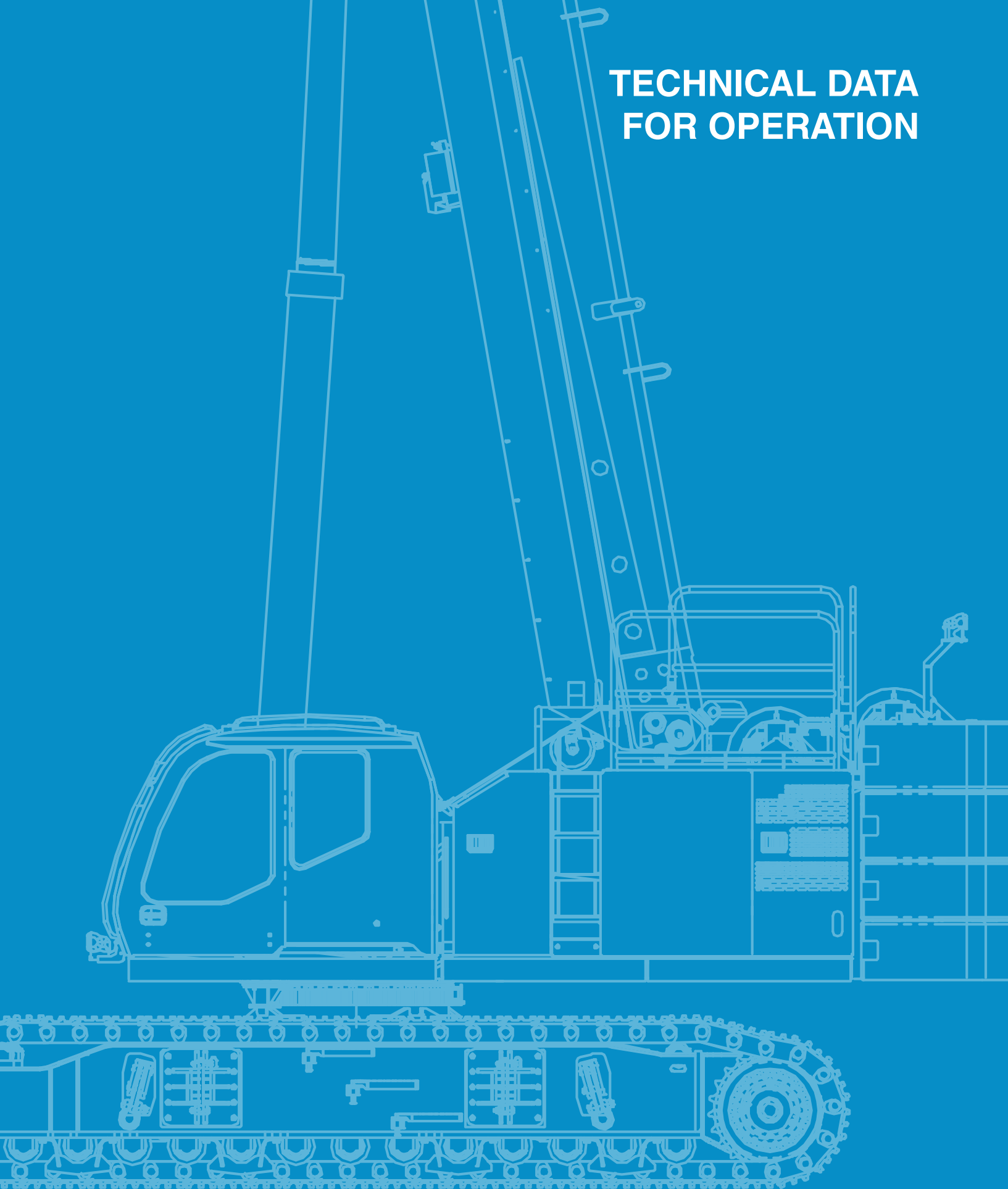
Rear carbody counterweight with toolbox



Transportation

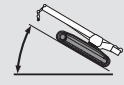
Machine weights		
	Standard equipment package	180,171 lb
	Upper Carbody	45,000 lb 20,000 lb
Standard Crane with 5 section - 141.1 ft boom, full counterweight, 2 winches with wire rope, auxiliary nose sheave and 35.4 inch 3-bar semi grouser track shoes		175,066 lb
Standard Crane with 5 section - 141.1 ft boom, auxiliary winch with wire rope and 35.4 inch 3-bar semi grouser track shoes (counterweight removed)		110,066 lb
Standard Crane with auxiliary winch with wire rope (counterweight and track frames removed)		76,221 lb
Optional Equipment		
Heavy lift jib: 8.2 ft		972 lb
Jib base: 33.1 ft		2,030 lb
Jib tip: 24.7 ft		750 lb
Auxiliary nose sheave		105 lb
	80 ton  6	1,442 lb
	55 ton  3	1,395 lb
	22 ton  1	655 lb
	8.8 ton	295 lb
Carbody jacks		3,774 lb
Track frame with 900 mm 3-bar semi-grouser track shoe		19,140 lb
Track frame with 800 mm flat steel track shoe		18,980 lb

TECHNICAL DATA FOR OPERATION

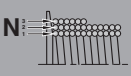


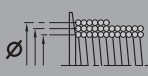
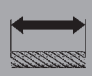



Operation

Speeds and gradeability





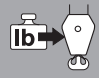

	0.7 mph / 2.1 mph		78 %
---	-------------------	---	------

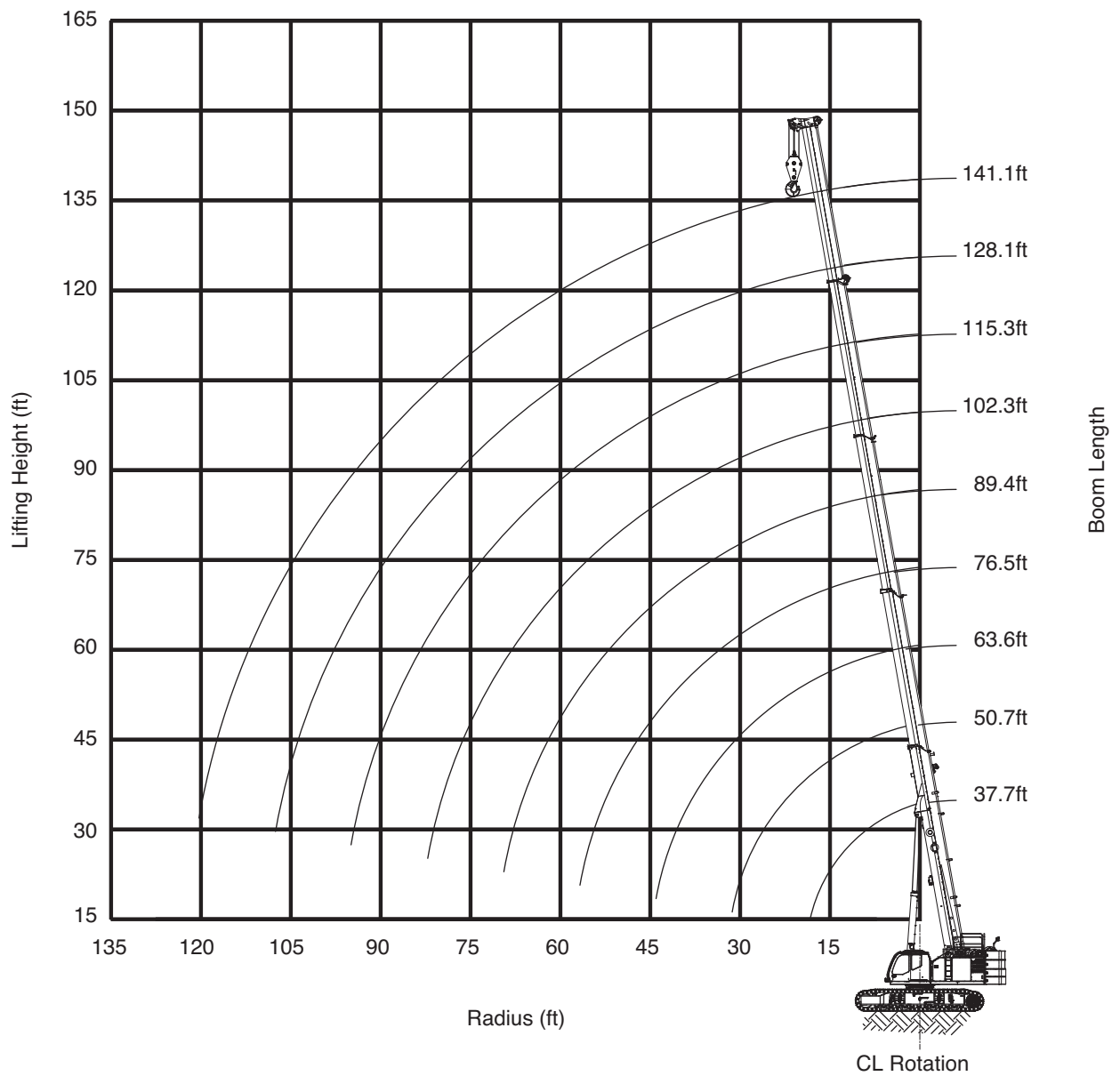
Main winch and auxiliary winch performance

					
1	19,828 lb	high: 290.3 ft/min. normal: 172.5 ft/min.	15.0 in.	112.2 ft	112.2 ft
2	17,962 lb	high: 316.2 ft/min. normal: 187.9 ft/min.	16.6 in.	122.3 ft	234.5 ft
3	16,411 lb	high: 342.1 ft/min. normal: 203.7 ft/min.	18.2 in.	132.2 ft	366.7 ft
4	15,107 lb	high: 368.0 ft/min. normal: 219.1 ft/min.	19.7 in.	142.4 ft	509.1 ft
5	14,006 lb	high: 394.3 ft/min. normal: 234.5 ft/min.	21.3 in.	152.2 ft	661.2 ft
6	13,039 lb	high: 420.2 ft/min. normal: 249.9 ft/min.	22.9 in.	162.4 ft	823.6 ft

Wire Rope: 3/4 inch diameter rotation resistant. Line pulls are not based on wire rope strength.

Operation

Hook blocks					
					
1	17,153	13.7-0-22	6	295	7.6 ft
2	34,306	27.5-1-19	6	771	10.0 ft
3	51,459	27.5-1-19	6	771	10.0 ft
4	68,612	60-3-19	6	1,410	10.0 ft
5	85,765	60-3-19	6	1,410	10.0 ft
6	102,918	60-3-19	6	1,410	10.0 ft
7	120,071	60-3-19	6	1,442	10.0 ft
8	137,224	80-6-19	6	1,442	10.8 ft
9	154,377	80-6-19	6	1,442	10.8 ft
10	160,000	80-6-19	6	1,442	10.8 ft
11	160,000	80-6-19	6	1,442	10.8 ft
12	160,000	80-6-19	6	1,442	10.8 ft



Operation

MB

45,000 lb + 20,000 lb		17'10"				20 mph				360°				ASME B30.5	
37.7 ft		50.7 ft				63.6 ft									
0.5°		1.5°		2.5°		4°		0.5°		1.5°		2.5°		4°	
ft	1,000 lb													ft	
10	160.0	160.0	160.0	145.4	111.6	111.6	111.6	110.5	98.6	98.6	98.5	77.1	10		
12	160.0	160.0	160.0	143.1	111.6	111.6	111.6	110.5	97.2	97.2	97.2	77.1	12		
15	140.3	140.3	140.3	112.0	111.6	111.6	111.6	103.0	95.5	95.3	91.2	77.1	15		
20	113.8	107.1	101.0	80.5	110.2	101.5	93.7	71.9	81.7	78.7	75.9	72.1	20		
25	79.1	76.0	73.0	61.9	76.5	71.9	67.7	53.1	68.9	66.8	63.8	57.2	25		
30	59.9	58.5	57.1	49.2	57.4	54.7	52.2	40.6	55.8	52.4	49.2	45.0	30		
35	-	-	-	-	45.2	43.5	42.0	35.3	43.8	41.5	39.4	36.4	35		
40	-	-	-	-	37.4	37.4	37.4	28.6	36.2	36.2	36.2	35.7	40		
45	-	-	-	-	-	-	-	-	34.8	33.6	32.5	30.9	45		
50	-	-	-	-	-	-	-	-	30.0	29.2	28.4	27.2	50		
55	-	-	-	-	-	-	-	-	26.2	25.7	25.2	24.5	55		

76.5 ft		89.4 ft				102.3 ft									
0.5°		1.5°		2.5°		4°		0.5°		1.5°		2.5°		4°	
ft	1,000 lb													ft	
10	96.1	96.1	81.8	59.6	-	-	-	-	-	-	-	-	-	-	10
12	96.1	91.3	81.8	59.6	-	-	-	-	-	-	-	-	-	-	12
15	76.9	76.9	75.9	59.6	75.5	70.3	63.3	46.9	32.1	32.1	32.1	32.1	15		
20	69.5	66.2	63.2	59.2	61.7	58.1	55.0	46.9	37.2	37.2	37.2	36.9	20		
25	58.4	56.1	53.9	50.9	51.8	49.2	46.9	43.8	37.2	37.2	37.2	36.9	25		
30	50.1	48.4	46.8	43.2	44.4	42.4	40.7	38.3	37.2	37.2	36.8	34.3	30		
35	43.6	41.2	38.6	35.2	38.5	37.0	35.6	33.8	35.5	33.9	32.4	30.4	35		
40	35.7	33.7	31.9	29.3	33.8	32.7	31.2	28.3	31.2	30.0	28.8	27.2	40		
45	29.5	28.1	26.7	25.2	29.5	27.8	26.2	24.0	27.7	26.7	25.8	24.3	45		
50	24.9	24.3	23.9	23.5	24.9	23.6	22.3	20.5	24.8	24.0	22.9	20.9	50		
55	22.9	22.6	22.4	22.0	21.2	20.2	19.2	17.8	22.2	21.0	19.8	18.2	55		
60	21.4	21.2	21.1	20.8	18.2	17.4	16.6	15.5	19.2	18.2	17.3	16.0	60		
65	20.2	20.1	20.0	19.4	15.8	15.1	14.5	13.6	16.8	15.9	15.2	14.1	65		
70	-	-	-	-	13.7	13.2	12.7	11.9	14.7	14.0	13.4	12.4	70		
75	-	-	-	-	12.0	11.6	11.2	10.6	12.9	12.3	11.8	11.1	75		
80	-	-	-	-	10.6	10.3	10.0	9.8	11.4	10.9	10.6	10.5	80		
85	-	-	-	-	-	-	-	-	10.3	10.1	10.1	9.9	85		
90	-	-	-	-	-	-	-	-	9.7	9.6	9.6	9.5	90		
95	-	-	-	-	-	-	-	-	9.2	9.2	9.2	9.2	95		

115.3 ft		128.1 ft				141.1 ft									
0.5°		1.5°		2.5°		4°		0.5°		1.5°		2.5°		4°	
ft	1,000 lb													ft	
20	37.2	37.2	37.2	31.0	-	-	-	-	-	-	-	-	-	-	20
25	36.3	36.3	36.2	31.0	34.8	34.8	32.3	26.0	28.8	28.8	25.0	18.0	25		
30	36.2	36.1	34.1	31.0	34.4	33.9	31.8	26.0	28.8	28.2	25.0	18.0	30		
35	33.5	31.7	30.2	28.1	31.8	29.9	28.2	26.0	27.1	25.7	24.5	18.0	35		
40	29.5	28.2	26.9	25.2	28.2	26.6	25.3	23.5	24.7	23.6	22.6	18.0	40		
45	26.3	25.2	24.1	22.7	25.1	23.9	22.7	21.2	22.7	21.5	20.4	18.0	45		
50	23.6	22.6	21.8	20.6	22.5	21.5	20.6	19.3	20.5	19.4	18.5	17.3	50		
55	21.3	20.5	19.8	18.4	20.3	19.5	18.7	17.7	18.5	17.7	16.9	15.8	55		
60	19.2	18.6	17.6	16.1	18.5	17.7	17.1	16.2	16.9	16.1	15.5	14.5	60		
65	17.4	16.4	15.5	14.3	16.8	16.2	15.7	14.6	15.4	14.8	14.2	13.4	65		
70	15.3	14.5	13.8	12.9	15.3	14.8	14.2	13.8	14.1	13.5	13.1	12.4	70		
75	13.5	12.9	12.5	12.1	14.0	13.7	13.4	12.8	12.9	12.5	12.0	11.4	75		
80	12.1	11.9	11.8	11.5	13.2	13.0	12.5	11.6	11.9	11.5	11.1	10.6	80		
85	11.4	11.3	11.1	10.9	12.5	11.9	11.4	10.6	11.0	10.6	10.3	9.6	85		
90	10.8	10.7	10.6	10.4	11.3	10.8	10.3	9.6	10.1	9.8	9.4	8.7	90		
95	10.3	10.2	10.1	9.9	10.2	9.8	9.4	8.8	9.3	9.0	8.5	7.9	95		
100	9.8	9.7	9.6	9.2	9.3	8.9	8.6	8.1	8.6	8.1	7.7	7.1	100		
105	9.3	9.1	9.0	8.6	8.5	8.2	7.8	7.4	7.7	7.3	7.0	6.5	105		
110	-	-	-	-	7.7	7.5	7.2	6.8	7.0	6.6	6.3	5.9	110		
115	-	-	-	-	7.0	6.8	6.6	6.3	6.3	6.0	5.7	5.3	115		
120	-	-	-	-	6.5	6.3	6.2	5.5	5.7	5.4	5.2	4.9	120		
125	-	-	-	-	-	-	-	-	5.1	4.9	4.7	4.2	125		
130	-	-	-	-	-	-	-	-	4.6	4.4	4.2	3.6	130		

Operation

MB

30,000 lb + 20,000 lb		17'10"				20 mph				360°				ASME B30.5
37.7 ft						50.7 ft				63.6 ft				
	0.5°	1.5°	2.5°	4°	0.5°	1.5°	2.5°	4°	0.5°	1.5°	2.5°	4°		
ft	1,000 lb												ft	
10	-	160.0	160.0	145.4	-	111.6	111.6	110.5	-	98.6	98.5	77.1	10	
12	-	160.0	160.0	143.1	-	111.6	111.6	110.5	-	97.2	97.2	77.1	12	
15	-	140.3	135.1	112.0	-	111.6	111.6	103.0	-	95.3	91.2	77.1	15	
20	-	89.8	84.6	77.6	-	84.7	78.0	69.6	-	78.7	73.0	63.4	20	
25	-	63.3	60.7	57.2	-	59.5	56.0	51.2	-	56.7	52.5	46.9	25	
30	-	48.4	47.3	-	-	45.0	42.8	39.8	-	42.7	40.1	36.5	30	
35	-	-	-	-	-	37.4	37.4	35.3	-	36.2	36.2	34.9	35	
40	-	-	-	-	-	32.4	31.5	28.6	-	32.7	31.3	29.5	40	
45	-	-	-	-	-	-	-	-	-	27.7	26.7	25.4	45	
50	-	-	-	-	-	-	-	-	-	23.9	23.2	22.2	50	
55	-	-	-	-	-	-	-	-	-	20.9	20.5	19.9	55	

76.5 ft						89.4 ft				102.3 ft				
	0.5°	1.5°	2.5°	4°	0.5°	1.5°	2.5°	4°	0.5°	1.5°	2.5°	4°		
ft	1,000 lb												ft	
10	-	96.1	81.8	59.6	-	-	-	-	-	-	-	-	10	
12	-	91.3	81.8	59.6	-	-	-	-	-	-	-	-	12	
15	-	76.9	75.9	59.6	-	70.3	63.3	46.9	-	32.1	32.1	32.1	15	
20	-	66.2	63.2	59.2	-	58.1	55.0	46.9	-	37.2	37.2	36.9	20	
25	-	55.9	51.1	44.8	-	49.2	46.9	42.7	-	37.2	37.2	36.9	25	
30	-	42.4	39.2	35.1	-	41.7	38.2	33.6	-	37.2	36.8	33.4	30	
35	-	33.3	31.2	29.7	-	32.9	30.4	27.2	-	33.6	30.9	27.3	35	
40	-	28.6	28.0	27.2	-	26.7	24.9	22.4	-	27.5	25.4	22.7	40	
45	-	26.3	25.8	24.9	-	22.0	20.6	18.8	-	22.8	21.3	19.2	45	
50	-	24.0	23.1	21.8	-	18.4	17.3	15.9	-	19.2	18.0	16.3	50	
55	-	21.0	20.3	19.3	-	15.5	14.7	13.6	-	16.4	15.4	14.5	55	
60	-	18.6	18.0	17.2	-	13.2	12.9	12.5	-	14.2	13.9	13.4	60	
65	-	16.6	16.2	15.6	-	12.1	11.9	11.7	-	13.1	12.9	12.5	65	
70	-	-	-	-	-	11.2	11.1	11.0	-	12.2	12.1	11.8	70	
75	-	-	-	-	-	10.5	10.4	10.3	-	11.5	11.3	11.1	75	
80	-	-	-	-	-	9.9	9.9	9.8	-	10.8	10.6	10.5	80	
85	-	-	-	-	-	-	-	-	-	10.1	10.1	9.8	85	
90	-	-	-	-	-	-	-	-	-	9.6	9.4	9.0	90	
95	-	-	-	-	-	-	-	-	-	8.9	8.7	8.5	95	

115.3 ft						128.1 ft				141.1 ft				
	0.5°	1.5°	2.5°	4°	0.5°	1.5°	2.5°	4°	0.5°	1.5°	2.5°	4°		
ft	1,000 lb												ft	
20	-	37.2	37.2	31.0	-	-	-	-	-	-	-	-	20	
25	-	36.3	36.2	31.0	-	34.8	32.3	26.0	-	28.8	25.0	18.0	25	
30	-	36.1	34.1	31.0	-	33.9	31.8	26.0	-	28.2	25.0	18.0	30	
35	-	31.7	30.2	27.0	-	29.9	28.2	26.0	-	25.7	24.5	18.0	35	
40	-	27.8	25.6	22.7	-	26.6	25.3	22.5	-	23.6	22.6	18.0	40	
45	-	23.3	21.5	19.2	-	23.5	21.7	19.2	-	21.5	20.4	18.0	45	
50	-	19.7	18.4	16.8	-	20.0	18.6	17.7	-	19.4	18.5	16.8	50	
55	-	16.9	16.2	15.6	-	17.9	17.3	15.8	-	17.7	16.4	14.6	55	
60	-	15.5	15.1	14.6	-	16.4	15.3	13.9	-	15.5	14.3	12.8	60	
65	-	14.4	14.1	13.6	-	14.4	13.6	12.4	-	13.5	12.6	11.3	65	
70	-	13.5	13.1	12.2	-	12.7	12.0	11.0	-	11.9	11.1	10.0	70	
75	-	12.3	11.8	11.0	-	11.3	10.7	9.8	-	10.5	9.8	8.9	75	
80	-	11.1	10.6	9.9	-	10.1	9.6	8.8	-	9.3	8.7	7.9	80	
85	-	10.0	9.6	9.0	-	9.0	8.6	7.9	-	8.2	7.7	7.0	85	
90	-	9.0	8.7	8.2	-	8.1	7.7	7.1	-	7.3	6.8	6.2	90	
95	-	8.2	7.9	7.5	-	7.3	6.9	6.4	-	6.5	6.1	5.5	95	
100	-	7.5	7.2	6.9	-	6.5	6.2	5.8	-	5.7	5.4	4.9	100	
105	-	6.8	6.7	6.4	-	5.8	5.6	5.2	-	5.0	4.7	4.3	105	
110	-	-	-	-	-	5.2	5.0	4.7	-	4.4	4.1	3.6	110	
115	-	-	-	-	-	4.7	4.5	4.3	-	3.8	3.5	3.1	115	
120	-	-	-	-	-	4.3	4.1	3.9	-	3.2	2.9	2.6	120	
125	-	-	-	-	-	-	-	-	-	2.6	2.4	2.1	125	
130	-	-	-	-	-	-	-	-	-	2.2	2.0	1.8	130	

Operation

MB

22,500 lb + 20,000 lb		17'10"				20 mph				360°				ASME B30.5	
37.7 ft		50.7 ft				63.6 ft									
0.5°		1.5°		2.5°		4°		0.5°		1.5°		2.5°		4°	
ft	1,000 lb													ft	
10	-	160.0	160.0	145.4	-	111.6	111.6	110.5	-	98.6	98.5	77.1	10		
12	-	160.0	160.0	143.1	-	111.6	111.6	110.5	-	97.2	97.2	77.1	12		
15	-	134.9	122.6	107.4	-	111.6	111.4	94.3	-	95.3	91.2	77.1	15		
20	-	81.2	76.4	70.1	-	76.3	70.3	62.5	-	72.6	65.5	56.9	20		
25	-	57.0	54.7	51.4	-	53.4	50.2	45.8	-	50.8	46.9	41.8	25		
30	-	43.4	42.4	40.8	-	40.1	38.2	37.4	-	38.0	36.2	36.2	30		
35	-	-	-	-	-	35.1	33.8	32.0	-	35.4	33.7	31.3	35		
40	-	-	-	-	-	28.9	28.2	27.0	-	29.3	28.1	26.4	40		
45	-	-	-	-	-	-	-	-	-	24.7	23.9	22.6	45		
50	-	-	-	-	-	-	-	-	-	21.3	20.6	19.7	50		
55	-	-	-	-	-	-	-	-	-	18.6	18.2	17.6	55		

76.5 ft		89.4 ft				102.3 ft									
0.5°		1.5°		2.5°		4°		0.5°		1.5°		2.5°		4°	
ft	1,000 lb													ft	
10	-	96.1	81.8	59.6	-	-	-	-	-	-	-	-	10		
12	-	91.3	81.8	59.6	-	-	-	-	-	-	-	-	12		
15	-	76.9	75.9	59.6	-	70.3	63.3	46.9	-	32.1	32.1	32.1	15		
20	-	66.2	63.2	53.7	-	58.1	55.0	46.9	-	37.2	37.2	36.9	20		
25	-	50.1	45.6	39.9	-	49.1	44.2	38.0	-	37.2	37.2	36.9	25		
30	-	37.7	34.8	32.6	-	37.1	33.9	29.7	-	37.2	34.2	29.7	30		
35	-	31.4	30.7	29.7	-	29.1	26.8	23.9	-	29.9	27.3	24.1	35		
40	-	28.6	27.9	25.9	-	23.4	21.8	19.5	-	24.2	22.4	19.9	40		
45	-	24.9	23.8	22.2	-	19.1	17.9	16.2	-	20.0	18.6	17.0	45		
50	-	21.4	20.6	19.4	-	15.9	15.2	14.7	-	16.7	16.2	15.6	50		
55	-	18.7	18.0	17.1	-	14.2	13.9	13.6	-	15.3	15.0	14.5	55		
60	-	16.4	15.9	15.2	-	13.1	12.9	12.5	-	14.2	13.9	13.4	60		
65	-	14.6	14.3	13.7	-	12.1	11.9	11.7	-	13.1	12.9	12.5	65		
70	-	-	-	-	-	11.2	11.1	11.0	-	12.2	12.0	11.3	70		
75	-	-	-	-	-	10.5	10.4	10.3	-	11.2	10.8	10.2	75		
80	-	-	-	-	-	9.9	9.9	9.8	-	10.1	9.7	9.2	80		
85	-	-	-	-	-	-	-	-	-	9.1	8.8	8.4	85		
90	-	-	-	-	-	-	-	-	-	8.3	8.0	7.7	90		
95	-	-	-	-	-	-	-	-	-	7.6	7.4	7.2	95		

115.3 ft		128.1 ft				141.1 ft									
0.5°		1.5°		2.5°		4°		0.5°		1.5°		2.5°		4°	
ft	1,000 lb													ft	
20	-	37.2	37.2	31.0	-	-	-	-	-	-	-	-	20		
25	-	36.3	36.2	31.0	-	34.8	32.3	26.0	-	28.8	25.0	18.0	25		
30	-	36.1	34.0	29.2	-	33.9	31.8	26.0	-	28.2	25.0	18.0	30		
35	-	30.2	27.4	23.9	-	29.9	27.2	23.6	-	25.7	24.5	18.0	35		
40	-	24.6	22.6	19.9	-	24.9	22.7	20.6	-	23.6	22.5	18.0	40		
45	-	20.5	19.0	18.2	-	20.9	20.1	18.3	-	21.0	19.2	16.9	45		
50	-	18.1	17.5	16.8	-	19.1	17.7	15.8	-	18.1	16.6	14.6	50		
55	-	16.7	16.2	15.1	-	16.5	15.3	13.8	-	15.5	14.3	12.7	55		
60	-	15.4	14.5	13.3	-	14.3	13.4	12.1	-	13.4	12.4	11.0	60		
65	-	13.6	12.8	11.8	-	12.5	11.8	10.6	-	11.7	10.8	9.6	65		
70	-	12.0	11.4	10.6	-	11.0	10.3	9.4	-	10.2	9.4	8.4	70		
75	-	10.7	10.2	9.5	-	9.7	9.1	8.4	-	8.9	8.3	7.4	75		
80	-	9.6	9.1	8.5	-	8.6	8.1	7.4	-	7.8	7.3	6.5	80		
85	-	8.6	8.2	7.7	-	7.6	7.2	6.6	-	6.8	6.3	5.7	85		
90	-	7.7	7.4	6.9	-	6.7	6.4	5.9	-	6.0	5.6	5.0	90		
95	-	6.9	6.7	6.3	-	6.0	5.7	5.2	-	5.2	4.8	4.3	95		
100	-	6.3	6.0	5.7	-	5.3	5.0	4.6	-	4.5	4.1	3.6	100		
105	-	5.7	5.5	5.3	-	4.7	4.5	4.1	-	3.8	3.4	3.0	105		
110	-	-	-	-	-	4.1	3.9	3.5	-	3.1	2.8	2.4	110		
115	-	-	-	-	-	3.6	3.4	3.1	-	2.5	2.2	1.9	115		
120	-	-	-	-	-	3.1	3.0	2.7	-	2.0	1.8	1.4	120		
125	-	-	-	-	-	-	-	-	-	1.5	1.3	*	125		
130	-	-	-	-	-	-	-	-	-	1.1	0.9	*	130		

* For explanations see page 29

Operation

MB

15,000 lb + 20,000 lb		17'10"				20 mph				360°				ASME B30.5
37.7 ft		50.7 ft				63.6 ft								
	0.5°	1.5°	2.5°	4°	0.5°	1.5°	2.5°	4°	0.5°	1.5°	2.5°	4°		
ft	1,000 lb												ft	
10	-	160.0	160.0	145.4	-	111.6	111.6	110.5	-	98.6	98.5	77.1	10	
12	-	160.0	160.0	137.9	-	111.6	111.6	110.5	-	97.2	97.2	77.1	12	
15	-	121.0	109.9	96.1	-	111.6	99.6	84.1	-	95.3	91.2	75.0	15	
20	-	72.5	68.2	62.4	-	67.9	62.5	55.4	-	64.4	58.0	50.2	20	
25	-	50.6	48.5	45.6	-	47.2	44.3	40.3	-	44.7	41.2	36.6	25	
30	-	38.3	37.4	36.0	-	37.4	37.3	34.7	-	36.2	36.2	33.9	30	
35	-	-	-	-	-	31.0	29.9	28.2	-	31.4	29.9	27.7	35	
40	-	-	-	-	-	25.5	24.7	23.7	-	25.9	24.8	23.2	40	
45	-	-	-	-	-	-	-	-	-	21.7	20.9	19.8	45	
50	-	-	-	-	-	-	-	-	-	18.6	18.0	17.2	50	
55	-	-	-	-	-	-	-	-	-	16.2	15.8	15.3	55	

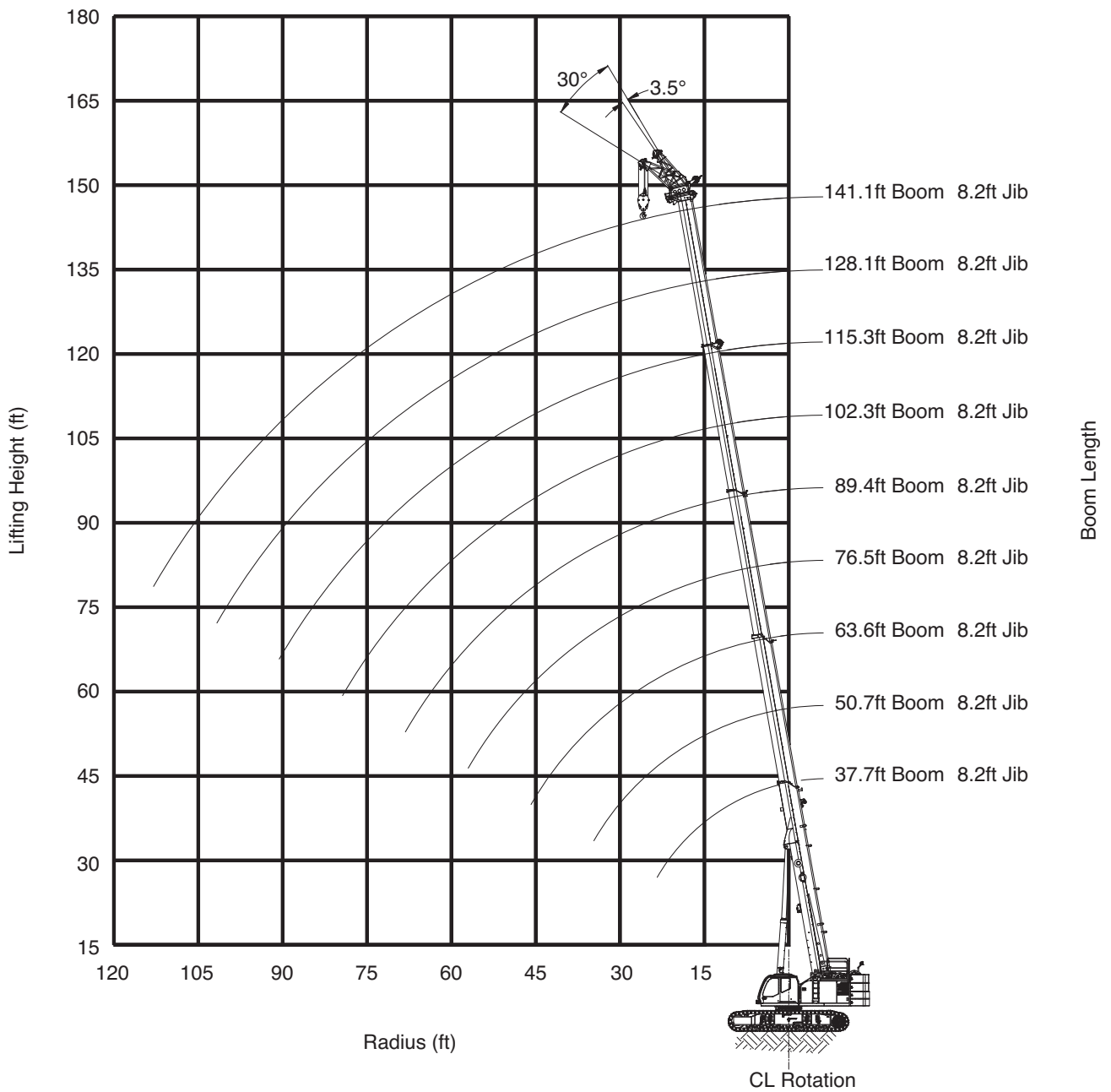
76.5 ft		89.4 ft				102.3 ft							
	0.5°	1.5°	2.5°	4°	0.5°	1.5°	2.5°	4°	0.5°	1.5°	2.5°	4°	
ft	1,000 lb												ft
10	-	96.1	81.8	59.6	-	-	-	-	-	-	-	-	10
12	-	91.3	81.8	59.6	-	-	-	-	-	-	-	-	12
15	-	76.9	75.9	59.6	-	70.3	63.3	46.9	-	32.1	32.1	32.1	15
20	-	63.1	56.0	47.4	-	58.1	53.7	44.6	-	37.2	37.2	36.9	20
25	-	44.2	40.1	35.0	-	43.3	38.8	33.2	-	37.2	37.2	32.9	25
30	-	33.6	33.6	32.6	-	32.5	29.5	25.8	-	33.2	29.9	25.8	30
35	-	31.4	29.7	27.1	-	25.2	23.2	20.5	-	26.0	23.8	20.8	35
40	-	26.1	24.7	22.8	-	20.1	18.6	17.7	-	20.9	19.5	18.6	40
45	-	22.0	20.9	19.5	-	17.1	16.7	16.1	-	18.3	17.7	17.0	45
50	-	18.8	18.0	16.9	-	15.5	15.2	14.7	-	16.7	16.2	15.6	50
55	-	16.3	15.7	14.9	-	14.2	13.9	13.6	-	15.3	15.0	13.8	55
60	-	14.3	13.8	13.2	-	13.1	12.9	12.5	-	13.8	13.2	12.2	60
65	-	12.7	12.3	11.8	-	12.1	11.9	11.6	-	12.2	11.6	10.8	65
70	-	-	-	-	-	11.2	11.0	10.4	-	10.8	10.3	9.6	70
75	-	-	-	-	-	10.2	9.9	9.4	-	9.6	9.2	8.6	75
80	-	-	-	-	-	9.2	9.0	8.7	-	8.6	8.2	7.7	80
85	-	-	-	-	-	-	-	-	-	7.7	7.4	7.0	85
90	-	-	-	-	-	-	-	-	-	6.9	6.7	6.4	90
95	-	-	-	-	-	-	-	-	-	6.3	6.1	5.9	95

115.3 ft		128.1 ft				141.1 ft							
	0.5°	1.5°	2.5°	4°	0.5°	1.5°	2.5°	4°	0.5°	1.5°	2.5°	4°	
ft	1,000 lb												ft
20	-	37.2	37.2	31.0	-	-	-	-	-	-	-	-	20
25	-	36.3	36.3	31.0	-	34.8	32.3	26.0	-	28.8	25.0	18.0	25
30	-	33.0	29.7	25.5	-	31.9	28.6	24.5	-	28.2	25.0	18.0	30
35	-	26.4	23.9	21.6	-	25.9	23.9	22.1	-	25.5	23.0	18.0	35
40	-	21.6	20.8	19.7	-	22.8	21.2	18.6	-	21.3	19.3	16.7	40
45	-	19.7	19.0	17.2	-	19.5	17.9	15.8	-	18.0	16.4	14.2	45
50	-	17.7	16.5	14.9	-	16.6	15.3	13.6	-	15.3	14.0	12.2	50
55	-	15.3	14.3	13.0	-	14.2	13.2	11.8	-	13.1	12.0	10.5	55
60	-	13.3	12.5	11.4	-	12.3	11.4	10.2	-	11.3	10.4	9.1	60
65	-	11.6	11.0	10.1	-	10.6	9.9	8.9	-	9.8	9.0	7.8	65
70	-	10.2	9.7	8.9	-	9.3	8.7	7.8	-	8.4	7.7	6.8	70
75	-	9.0	8.6	7.9	-	8.1	7.6	6.8	-	7.3	6.7	5.8	75
80	-	8.0	7.6	7.1	-	7.1	6.6	6.0	-	6.3	5.8	5.0	80
85	-	7.1	6.8	6.3	-	6.2	5.8	5.2	-	5.4	4.9	4.3	85
90	-	6.3	6.0	5.6	-	5.4	5.1	4.6	-	4.6	4.2	3.5	90
95	-	5.6	5.4	5.0	-	4.7	4.4	3.9	-	3.8	3.4	2.8	95
100	-	5.0	4.8	4.5	-	4.1	3.8	3.3	-	3.0	2.7	2.2	100
105	-	4.5	4.4	4.1	-	3.4	3.1	2.8	-	2.4	2.1	*	105
110	-	-	-	-	-	2.8	2.6	2.3	-	*	*	*	110
115	-	-	-	-	-	2.3	2.1	1.8	-	*	*	*	115
120	-	-	-	-	-	1.9	1.7	1.5	-	*	*	*	120
125	-	-	-	-	-	-	-	-	-	*	*	*	125
130	-	-	-	-	-	-	-	-	-	*	*	*	130

* For explanations see page 29

Page 27 + 28:

An asterisk (*) on the chart indicates positions without rated loads. These areas are susceptible to instability in either the forward or backward direction. Even without a load, the boom should not be positioned in these configurations of the load chart to avoid tipping.

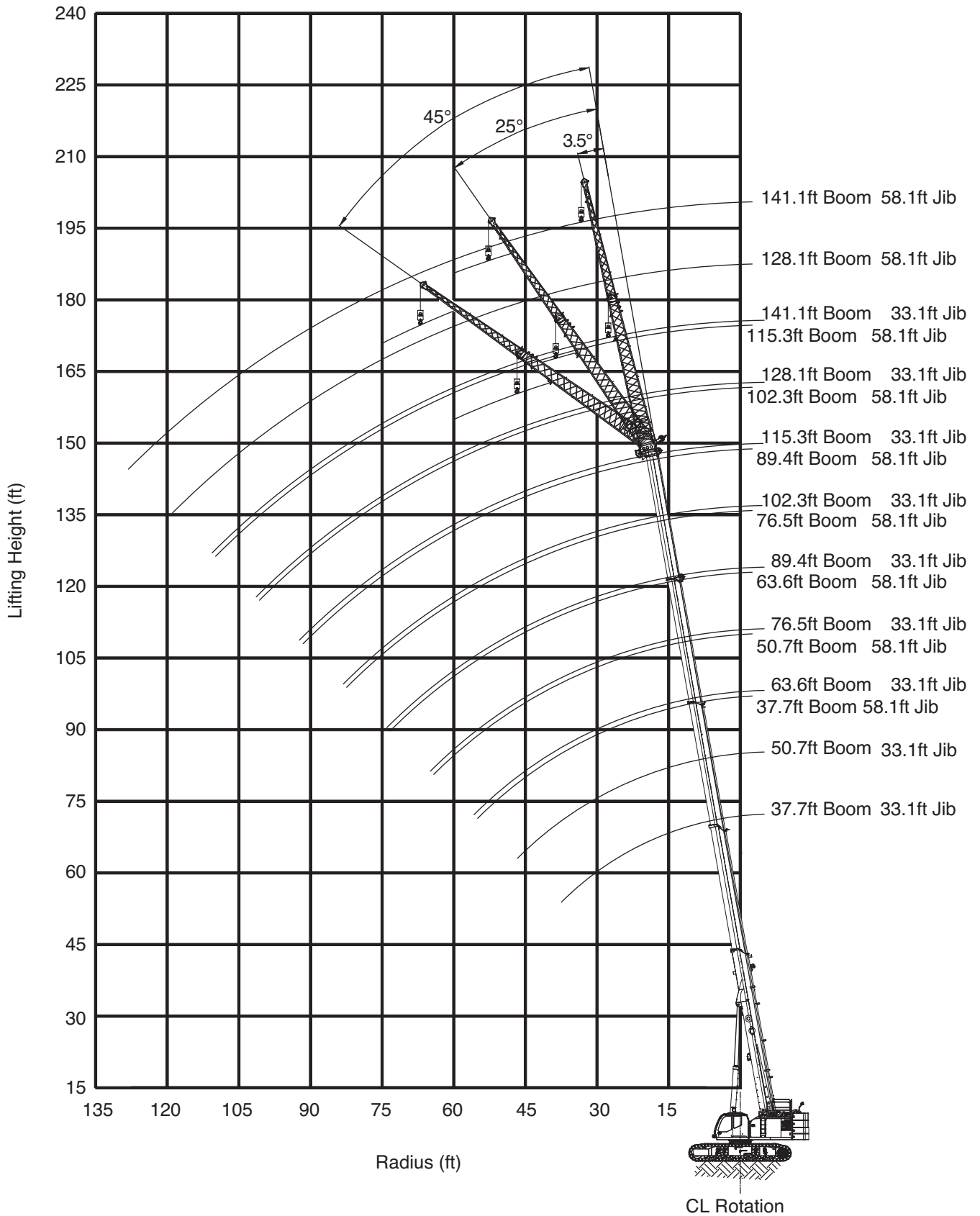


Operation

Tracks fully extended – 360° – Up to 0.5° slope – Heavy lift jib

		37.7 ft		102.3 ft		115.3 ft		128.1 ft		141.1 ft		
		3.5°	30°	3.5°	30°	3.5°	30°	3.5°	30°	3.5°	30°	
ft		1,000 lb										ft
10	47.8	36.8	-	-	-	-	-	-	-	-	-	10
12	45.9	35.8	-	-	-	-	-	-	-	-	-	12
15	43.3	34.7	-	-	-	-	-	-	-	-	-	15
20	39.9	33.2	29.7	28.1	-	-	-	-	-	-	-	20
25	37.4	32.3	26.9	25.8	28.0	26.6	28.2	-	-	-	-	25
30	35.7	32.2	23.4	22.6	24.6	23.5	25.5	24.2	23.3	-	-	30
35	35.1	32.2	20.6	20.0	21.8	21.0	22.9	21.8	23.3	22.4	-	35
40	-	-	18.4	17.9	19.6	19.0	20.6	19.8	21.4	20.4	-	40
45	-	-	16.5	16.1	17.7	17.2	18.8	18.1	19.6	18.8	-	45
50	-	-	14.9	14.7	16.1	15.7	17.2	16.6	18.0	17.3	-	50
55	-	-	13.6	13.4	14.8	14.5	15.8	15.4	16.6	16.1	-	55
60	-	-	12.4	12.3	13.6	13.3	14.6	14.2	15.4	15.0	-	60
65	-	-	11.4	11.3	12.6	12.4	13.5	13.2	14.3	14.0	-	65
70	-	-	10.6	10.5	11.7	11.5	12.6	12.4	13.0	13.1	-	70
75	-	-	9.8	9.7	10.8	10.7	11.8	11.6	11.9	12.0	-	75
80	-	-	9.1	9.0	10.1	10.0	11.0	10.9	10.9	11.0	-	80
85	-	-	8.5	8.4	9.5	9.4	10.4	10.2	10.0	10.1	-	85
90	-	-	7.9	7.9	8.9	8.8	9.7	9.7	9.1	9.2	-	90
95	-	-	7.4	-	8.4	8.3	9.2	9.1	8.4	8.4	-	95
100	-	-	7.0	-	7.9	7.9	8.7	8.6	7.7	7.8	-	100
105	-	-	-	-	7.5	-	7.9	8.0	7.1	7.1	-	105
110	-	-	-	-	7.1	-	7.1	7.2	6.4	6.5	-	110
115	-	-	-	-	6.8	-	6.5	6.5	5.7	5.8	-	115
120	-	-	-	-	-	-	5.8	-	5.1	5.1	-	120
125	-	-	-	-	-	-	5.3	-	4.4	4.5	-	125
130	-	-	-	-	-	-	-	-	3.8	-	-	130
135	-	-	-	-	-	-	-	-	3.2	-	-	135
140	-	-	-	-	-	-	-	-	2.7	-	-	140
	4	4	2	2	2	2	2	2	2	2	2	

Load chart data is for reference, load charts supplied in the crane cab shall be used for lift planning.



Operation

Tracks fully extended – 360° – Up to 0.5° slope – Folding jib

45,000 lb + 20,000 lb 17'10" 0.5° 33.1 ft 20 mph 360° ASME B30.5																	
37.7 ft			102.3 ft			115.3 ft			128.1 ft			141.1 ft					
	3.5°	25°	45°	3.5°	25°	45°	3.5°	25°	45°	3.5°	25°	45°	3.5°	25°	45°		
ft	1,000 lb															ft	
10	14.6	-	-	-	-	-	-	-	-	-	-	-	-	-	-	-	10
12	14.6	-	-	-	-	-	-	-	-	-	-	-	-	-	-	-	12
15	14.6	-	-	-	-	-	-	-	-	-	-	-	-	-	-	-	15
20	14.6	-	-	-	-	-	-	-	-	-	-	-	-	-	-	-	20
25	14.6	14.6	-	14.6	-	-	-	-	-	-	-	-	-	-	-	-	25
30	14.6	14.3	11.9	14.6	-	-	14.6	-	-	-	-	-	-	-	-	-	30
35	14.6	13.2	11.2	14.6	14.6	-	14.6	-	-	14.6	-	-	13.5	-	-	-	35
40	14.6	12.2	10.7	14.6	14.6	-	14.6	14.6	-	14.6	-	-	13.5	-	-	-	40
45	13.7	11.4	10.2	14.6	13.7	11.1	14.6	13.7	-	14.6	13.5	-	13.5	-	-	-	45
50	12.5	10.8	9.9	13.5	12.7	10.8	13.8	12.7	10.9	14.0	12.7	10.9	13.5	12.5	-	-	50
55	11.6	10.3	9.8	12.4	11.7	10.5	12.8	11.8	10.6	13.0	11.9	10.7	13.0	11.8	10.7	-	55
60	10.8	10.0	-	11.4	10.8	10.3	11.8	11.0	10.3	12.1	11.1	10.4	12.1	11.1	10.3	-	60
65	-	-	-	10.6	10.1	9.9	11.0	10.3	10.0	11.3	10.4	10.0	11.3	10.4	9.9	-	65
70	-	-	-	9.9	9.4	9.2	10.3	9.7	9.4	10.6	9.9	9.5	10.6	9.9	9.4	-	70
75	-	-	-	9.2	8.8	8.7	9.6	9.1	8.9	9.9	9.3	9.0	10.0	9.3	8.9	-	75
80	-	-	-	8.6	8.3	8.2	9.0	8.6	8.4	9.3	8.8	8.5	9.5	8.8	8.5	-	80
85	-	-	-	8.0	7.8	7.7	8.5	8.1	8.0	8.8	8.3	8.1	8.9	8.4	8.1	-	85
90	-	-	-	7.6	7.4	7.3	8.0	7.7	7.5	8.3	7.9	7.7	8.5	8.0	7.8	-	90
95	-	-	-	7.1	6.9	6.9	7.6	7.3	7.2	7.9	7.5	7.4	8.1	7.6	7.4	-	95
100	-	-	-	6.7	6.6	6.5	7.2	6.9	6.8	7.5	7.2	7.0	7.7	7.3	7.1	-	100
105	-	-	-	6.3	6.2	-	6.8	6.6	6.5	7.1	6.8	6.7	7.3	7.0	6.8	-	105
110	-	-	-	6.0	5.9	-	6.5	6.3	6.2	6.8	6.5	6.4	7.0	6.7	6.5	-	110
115	-	-	-	5.7	5.6	-	6.1	6.0	6.0	6.5	6.3	6.2	6.7	6.4	6.3	-	115
120	-	-	-	5.4	5.4	-	5.9	5.7	-	6.2	6.0	5.9	6.1	6.1	6.0	-	120
125	-	-	-	5.2	-	-	5.6	5.5	-	5.9	5.8	5.7	5.6	5.9	5.8	-	125
130	-	-	-	-	-	-	5.4	5.3	-	5.7	5.6	-	5.0	5.4	5.6	-	130
135	-	-	-	-	-	-	5.2	5.1	-	5.3	5.3	-	4.5	4.9	5.0	-	135
140	-	-	-	-	-	-	5.0	-	-	4.8	5.0	-	4.0	4.4	-	-	140
	1	1	1	1	1	1	1	1	1	1	1	1	1	1	1		

Load chart data is for reference, load charts supplied in the crane cab shall be used for lift planning.

Operation

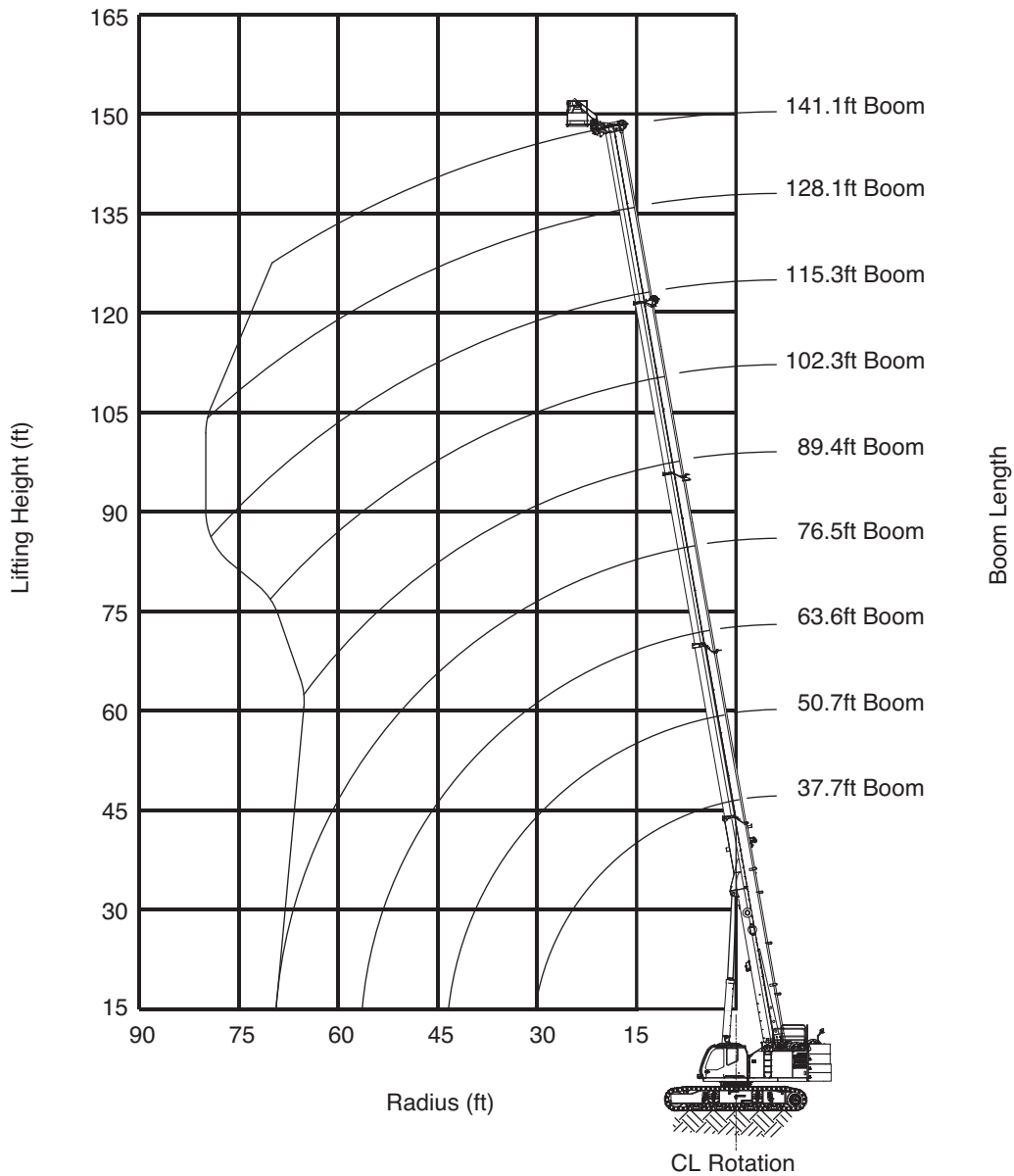


Tracks fully extended – 360° – Up to 0.5° slope – Folding jib

45,000 lb + 20,000 lb 17'10" 0.5° 58.1 ft 20 mph 360° ASME B30.5																	
37.7 ft			102.3 ft			115.3 ft			128.1 ft			141.1 ft					
	3.5°	25°	45°	3.5°	25°	45°	3.5°	25°	45°	3.5°	25°	45°	3.5°	25°	45°		
ft	1,000 lb															ft	
10	-	-	-	-	-	-	-	-	-	-	-	-	-	-	-	-	10
15	-	-	-	-	-	-	-	-	-	-	-	-	-	-	-	-	15
20	9.9	-	-	-	-	-	-	-	-	-	-	-	-	-	-	-	20
25	9.9	-	-	-	-	-	-	-	-	-	-	-	-	-	-	-	25
30	9.9	-	-	-	-	-	-	-	-	-	-	-	-	-	-	-	30
35	9.9	-	-	7.5	-	-	-	-	-	-	-	-	-	-	-	-	35
40	9.1	8.1	-	7.5	-	-	7.2	-	-	6.9	-	-	-	-	-	-	40
45	8.3	7.6	-	7.5	-	-	7.2	-	-	6.9	-	-	6.7	-	-	-	45
50	7.6	7.1	-	7.5	-	-	7.2	-	-	6.9	-	-	6.7	-	-	-	50
55	7.1	6.7	5.7	7.5	7.5	-	7.2	7.2	-	6.9	-	-	6.7	-	-	-	55
60	6.6	6.2	5.4	7.5	7.3	-	7.2	7.2	-	6.9	6.9	-	6.7	-	-	-	60
65	6.1	5.8	5.2	7.5	7.0	5.6	7.2	7.1	-	6.9	6.9	-	6.7	6.7	-	-	65
70	5.8	5.4	4.9	7.5	6.8	5.4	7.2	6.9	5.4	6.9	6.9	-	6.7	6.7	-	-	70
75	5.4	5.1	4.7	7.4	6.5	5.2	7.2	6.6	5.3	6.9	6.7	5.3	6.7	6.7	-	-	75
80	5.2	4.8	4.6	7.1	6.2	5.1	7.2	6.4	5.2	6.9	6.5	5.2	6.7	6.6	5.2	-	80
85	4.9	4.7	-	6.8	6.0	5.0	6.9	6.1	5.0	6.9	6.2	5.0	6.7	6.3	5.1	-	85
90	-	-	-	6.5	5.7	4.8	6.7	5.9	4.9	6.9	6.0	4.9	6.7	6.1	5.0	-	90
95	-	-	-	6.1	5.5	4.7	6.4	5.7	4.8	6.6	5.8	4.8	6.7	5.9	4.8	-	95
100	-	-	-	5.8	5.3	4.6	6.0	5.5	4.7	6.3	5.6	4.7	6.4	5.7	4.8	-	100
105	-	-	-	5.4	5.2	4.5	5.7	5.3	4.6	5.9	5.4	4.6	6.0	5.6	4.7	-	105
110	-	-	-	5.1	5.0	4.5	5.4	5.1	4.5	5.6	5.3	4.5	5.8	5.4	4.6	-	110
115	-	-	-	4.8	4.7	4.4	5.1	5.0	4.4	5.4	5.1	4.5	5.5	5.2	4.5	-	115
120	-	-	-	4.6	4.5	4.3	4.9	4.7	4.3	5.1	4.9	4.4	5.2	4.9	4.4	-	120
125	-	-	-	4.3	4.3	4.3	4.6	4.5	4.3	4.8	4.7	4.3	5.0	4.7	4.3	-	125
130	-	-	-	4.1	4.1	4.1	4.4	4.3	4.2	4.6	4.5	4.3	4.8	4.5	4.3	-	130
135	-	-	-	3.9	3.9	-	4.2	4.1	4.1	4.4	4.3	4.2	4.5	4.3	4.2	-	135
140	-	-	-	3.7	3.7	-	4.0	3.9	3.9	4.2	4.1	4.0	4.4	4.2	4.1	-	140
145	-	-	-	3.5	3.5	-	3.8	3.7	-	4.0	3.9	3.9	4.2	4.0	3.9	-	145
150	-	-	-	3.4	-	-	3.7	3.6	-	3.9	3.7	3.7	3.7	3.8	3.8	-	150
160	-	-	-	-	-	-	3.4	3.3	-	3.6	3.5	-	2.9	3.4	3.5	-	160
170	-	-	-	-	-	-	-	-	-	3.0	3.2	-	2.1	2.5	3.3	-	170
180	-	-	-	-	-	-	-	-	-	-	-	-	1.5	1.7	-	-	180
190	-	-	-	-	-	-	-	-	-	-	-	-	0.9	-	-	-	190
	1	1	1	1	1	1	1	1	1	1	1	1	1	1	1		

Load chart data is for reference, load charts supplied in the crane cab shall be used for lift planning.

WP750 Work platform



Shaded area is allowable operating range!

Limits of operation:

Max. load capacity = 750 lb · Max. radius when mounted on main boom = 80 ft · Max. occupancy = 2 persons

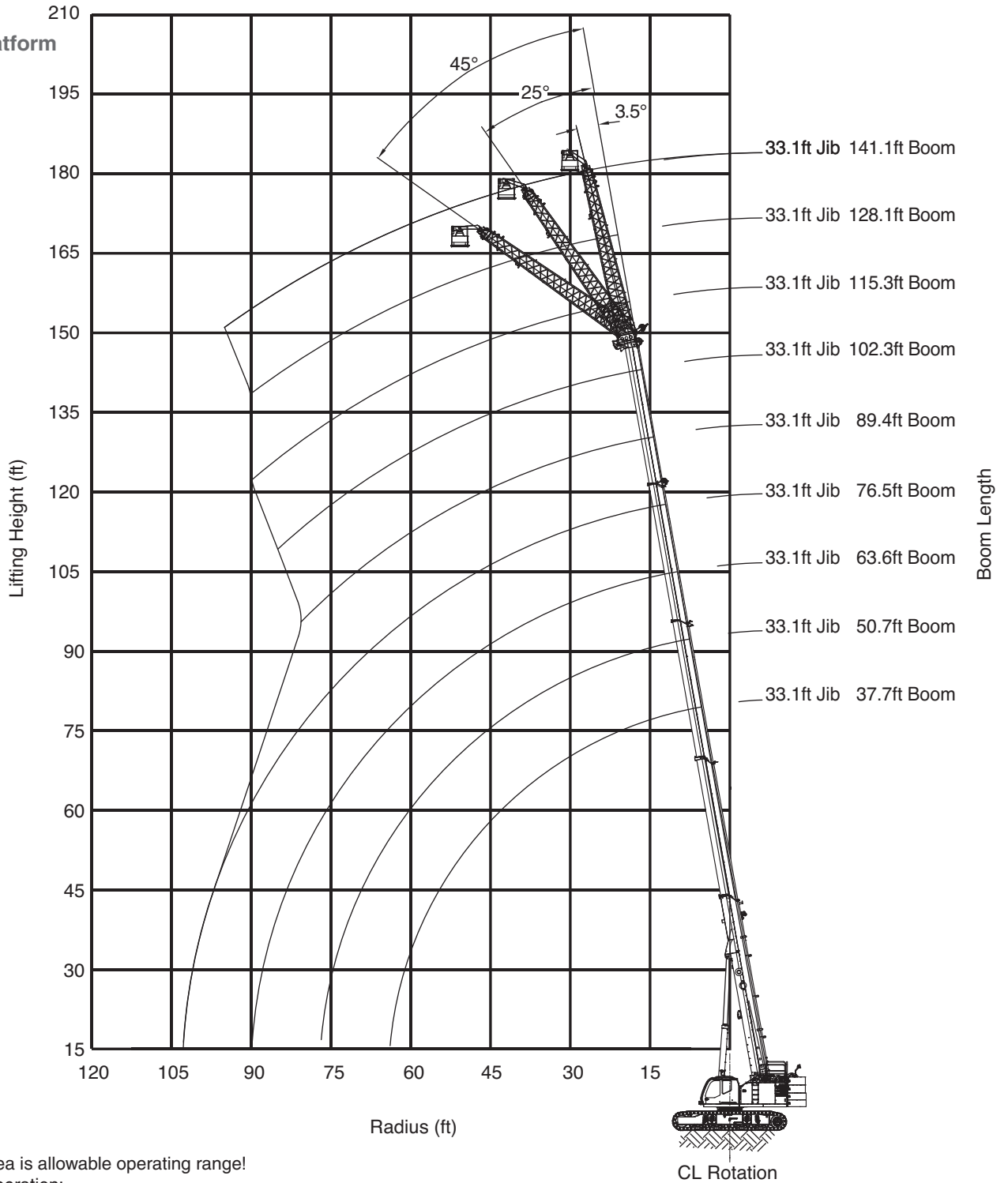
Notes:

1. It is permissible to leave the jibs stowed on the boom while operating with work platform mounted to the main boom.
2. The hook block(s) must be removed when using the work platform.

WARNING: Lifting a load during work platform operation is **not** allowed.

WARNING: Travelling the crane with person(s) in the work platform is **not** allowed.

WP750
Work platform



Shaded area is allowable operating range!

Limits of operation:

Max. load capacity = 750 lb · Max. radius when mounted on jib = 100 ft · Max. occupancy = 2 persons

Notes:

1. It is permissible to leave the jib section stowed on the boom while operating with work platform mounted to the 33.1 ft jib.
2. The hook block(s) must be removed when using the work platform.

WARNING: Lifting a load during work platform operation is *not* allowed.

WARNING: Travelling the crane with person(s) in the work platform is *not* allowed.

Notes to Lifting Capacity

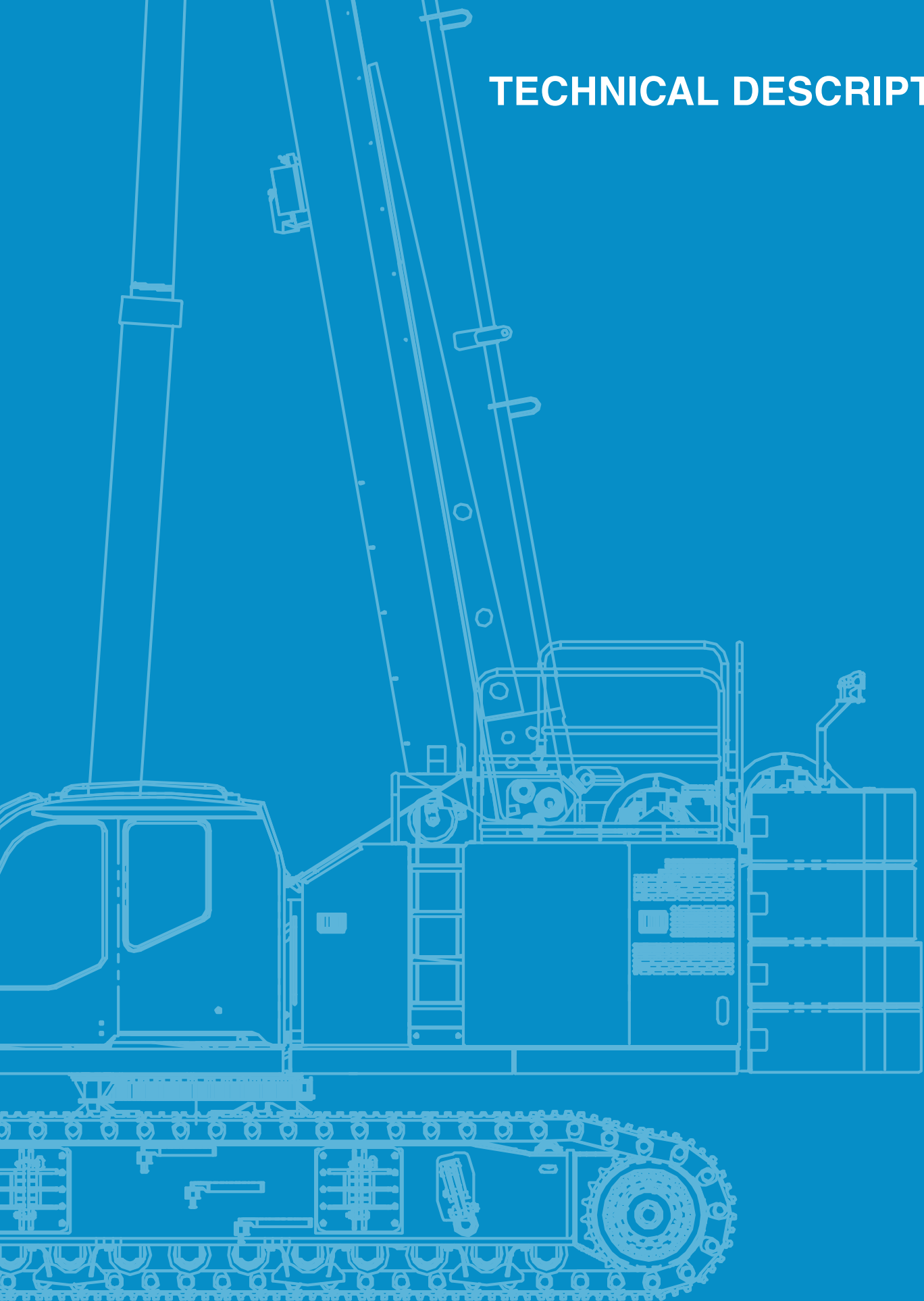
Definitions and Explanations

- Load capacity values in these charts are stated in lb x 1000.
- All ratings are for 360° of rotation unless otherwise specified on the chart.
- Load radius is defined as the horizontal distance from the axis of rotation (with no load) to the center of the lifting device after load is applied in feet (ft).
- Boom height dimensions are measured from ground to center of lower boom head sheave in feet (ft).
- Boom angle / boom length relationships given are an approximation of the resulting load radius, which should be an accurate measurement.
- Boom angle is the included angle between the longitudinal axis of the boom base section and the horizontal axis, after lifting load. The boom angle before lifting should be slightly greater than desired to account for boom deflection.
- Boom positions without rated loads in the charts are prohibited. These areas are indicated by an “*” and are susceptible to instability either in the forward direction or the backwards direction.
- It is acceptable to telescope boom with a load within the limits of rated capacities. However, boom angle, system hydraulic pressure, and/or boom lubrication may affect operation.
- Deduct the weight of the hook block, hook/ball, slings, spreader bar, or other suspended equipment from the listed rated capacities. This includes lifting accessories stowed on the boom such as jib, extension, and auger.
- Unless otherwise noted, travelling in low speed is allowed for all rated loads- reduce travel speed to minimize dynamic effects on the crane from swinging load, side loading, etc.
- This crane as originally manufactured meets the requirements of ASME B30.5 2014. Structure and stability have been tested in accordance with SAE J1063 and SAE J765.

Note

Data published herein is intended as a guide only and shall not be construed to warrant applicability for lifting purposes. Crane operation is subject to the computer charts and operation manual both supplied with the crane.

TECHNICAL DESCRIPTION



Technical Description

Crane specifications

Boom	<p>5-section full power telescoping boom with 2 extension modes. System consists of two double acting hydraulic cylinders with load holding valves and extension and retraction cables.</p> <p>Retracted length: 37' 8" Extended length: 141' 1" Extension time: 161 s Elevating angles: -1.5° to 81.5° Elevating time: 83 s Max. lifting height: 138'</p> <p>Boom head: Six, 19.5 inch diameter cast nylon main sheaves on heavy-duty roller bearings. Two, 17.5 inch diameter lead in sheaves on heavy-duty roller bearings. Designed for quick reeving of head and load block.</p>
Auxiliary boom head	<p>Quick reeve, single 17.5 inch diameter high-strength sheave mounted on a heavy-duty roller bearing. Allows single part reeving.</p>
Counterweight	<p>6 piece counterweight design. Three upper counterweight configurations.</p> <p>Configuration „A“ = 15,000 lb Configuration „A+“ = 22,500 lb Configuration „B“ = 30,000 lb Configuration „C“ = 45,000 lb Two carbody counterweights, 10,000 lb each.</p>
Winches	<p>Planetary geared two-speed winch includes a hydraulic motor, multidisc internal brake and counterbalance valve. Drum rotation indicator is included (complete winch performance specs on page 22).</p> <p>Main winch: Rope diameter and length: 3/4 in. x 695 ft Single line pull: 19,830 lb – first layer Single line speed: 368 ft/min – 4th layer</p> <p>Auxiliary winch: Rope diameter and length: 3/4 in. x 480 ft Single line pull: 19,830 lb – first layer Single line speed: 368 ft/min – 4th layer</p>
Travel	<p>Each side frame contains a pilot controlled, two-speed track drive with hydraulic axial piston motor and parking brake. Travel system provides skid steering and counter rotation.</p> <p>Travel speed: Low: 0.7 mph · High: 2.1 mph Gradeability (unladen): 78 % Unladen ground pressure: 11.8 psi</p>
Swing	<p>Gear motor driving a planetary gear reducer with a shaft mounted pinion, external gear shear ball slew bearing bolted to the superstructure and the carbody allows the superstructure to rotate 360°.</p> <p>Swing speed: 0 - 2.2 rpm. Swing parking brake: Spring applied failsafe brake with hydraulic release that is controlled from the operators cab. Swing service brake: Hydraulically applied, controlled through foot actuated pedal. House lock system: 4-position house lock (boom over front, rear or either side). Actuated from the operator's cab.</p>
Load moment indicator	<p>TADANO AML-C rated capacity limiter and anti-two block system: OPTI-WIDTH™ – OPTIMAL lifting performance at any track WIDTH. Control function shutdown. Audible and visual warnings. LCD screen provides a continuous display of working boom length, boom angle, working load radius, tip height, swing position, parts-of-line (operator set), machine track configuration, relative load moment, maximum permissible load and actual load. Anti-two block weight allows quick reeving of hook block. Operator configurable working range limits with automatic soft stop.</p>
Frame	<p>The frame is an all-steel, welded structure, precision machined to accept attachment of the boom and swing components.</p>
Operators cab	<p>Fully-enclosed, air conditioned all-steel modular cab with lockable sliding door, acoustical lining, anti-slip floor and tinted safety glass.</p> <p>Cab tilts 20°. Rear view, winch view and right side view video cameras. Three remote control work lights. Grab bars and steps are located for easy access to the cab. Defroster, heater, circulating fan. 2-speed windshield wiper, top glass wiper. Six-way adjustable fabric seat with headrest, seat belt. Dome light. Dry-chemical fire extinguisher. Four-way electronic armrest mounted joysticks control swing, main winch, auxiliary winch, boom hoist and boom extend. Foot pedals control the travel and swing service brake functions. Swing brake pedal is hydraulic. Selectable modes for fine control and travel. Travel function can be operated by foot pedals or joystick. Seat termination switch immediately disable all hydraulic functions as the operator rises from the seat. Functions can also be disabled by switch on console. Dash instrumentation: tachometer, hour meter, fuel gauge, and DEF level gauge. Indicators are provided for crane level, swing position, load moment, drum rotation, air filter restriction, engine oil temperature and pressure, hydraulic oil temperature and level, and hydraulic and air filter restriction, and low voltage.</p>

Technical Description

Crane specifications

Engine	Make/Model: Cummins B6.7 · Type: 6 cylinder, water cooled, 4 cycle · Aspiration: turbocharged and aftercooled · Max. output: 310 HP (231 kW)@2200 rpm · Max. torque: 950 lb-ft (1288 N-m)@1500 rpm · Piston disp: 6.7 l · Emission Cert: U.S. EPA Tier 4f, Euromot Stage V · Alternator: 70 amp.
Electrical system	24 VDC.
Fuel system	Capacity: 85 gallons. Filtration: Inline fuel/water separator and engine mounted fuel filter.
Side frames	Two welded steel side frames are paired with a track group. The side frames extend and retract hydraulically and are controlled from the cab. Track rollers: Two top and thirteen bottom sealed rollers on each track frame Idler: Oil filled, self lubricating with spring type tensioner. Track shoes: 35.4 inch, 3-bar semi grouser.
Hydraulic system	Hydraulic pumps: Two high pressure, variable axial piston pumps with load sense and power limiting control for crane functions. One axial piston pump for swing function. One gear pump for cooling loop. Directional valves: Multiple pressure and flow compensated valves with integrated relief valves controlled by electrical signals. Pump output: 154 gpm@2200 rpm engine speed. 5,000 psi maximum pressure. Reservoir: 227 gallons capacity, spin-on filler/ breather, sight gauge, cleanout, and sump drain. Filtration: Three 5 micron, full flow tank mounted return filters with electrical clogging indicator. 3 micron pilot oil in-line pressure filter. Diagnostic ports: Provided for system, load sense, and pilot pressure.

Optional equipment

Heavy lift jib	Total length: 8.2 ft	Offset angles: 3.5° and 30°	Max. lifting height: 148.6 ft
Main jib	Total length: 33.1 ft	Offset angles: 3.5°, 25° and 45°	Max. lifting height: 173.6 ft
Fly jib	Total length: 58.1 ft	Offset angles: 3.5°, 25° and 45°	Max. lifting height: 198.0 ft
Hook blocks	80 ton quick reeve hook block – six, 19.5 inch steel sheaves, swivel hook and safety latch. 55 ton quick reeve hook block – three, 19.5 inch steel sheaves, swivel hook and safety latch. 22 ton quick reeve hook block – one, 19.5 inch steel sheave, swivel hook and safety latch.		
Overhaul ball	8.8 ton with swivel hook and safety latch.		
360° house lock	Actuated from the operator's cab.		
Track shoes	31.5 inch steel flat or 3-bar semi grouser shoes. 35.4 inch steel flat shoes.		
Auger	Hydraulic auger boom package includes auger motor, hoses, fasteners, and stowage bracket assembly mounted to the 2nd stage section of boom for variable radius drilling.		
Tool circuit	Provides 5 gpm and 10 gpm@2,500 psi through a 50 ft twin hose reel with quick disconnect fittings to operate open center tools.		
High flow tool circuit	Provides 45 gpm@4800 psi.		
Carbody jack system	Includes carbody mounted jacks, valves, electric control pendant, and auto-level raise system.		
Free fall hoists	Winches are available in controlled free fall configurations.		
Cold weather packages	Cold weather options are available for operation to -40°C (consult factory for application support).		
Work platform	Model WP750 – 36 inch x 72 inch, all steel, welded, two person platform with maximum capacity of 750 lb.		
Full function radio remote control package			
Boom mounted anemometer with cab display			
Automatic central lubrication system			

tac.sales@tadano.com
www.tadano.com

Tadano Ltd.

Kanda Square 18th Floor, 2-2-1 Kanda-Nishikicho, Chiyoda-ku, Tokyo 101-0054, Japan
Phone: +81-3-6811-7309 (International Division)

Tadano America Corporation

4242 West Greens Road, Houston, TX 77066
Phone: +1 (281) 869-00300 · Fax: +1 (281) 869-0040



Reaching new heights

