



scorpion 16 Pro

on Iveco P 3750

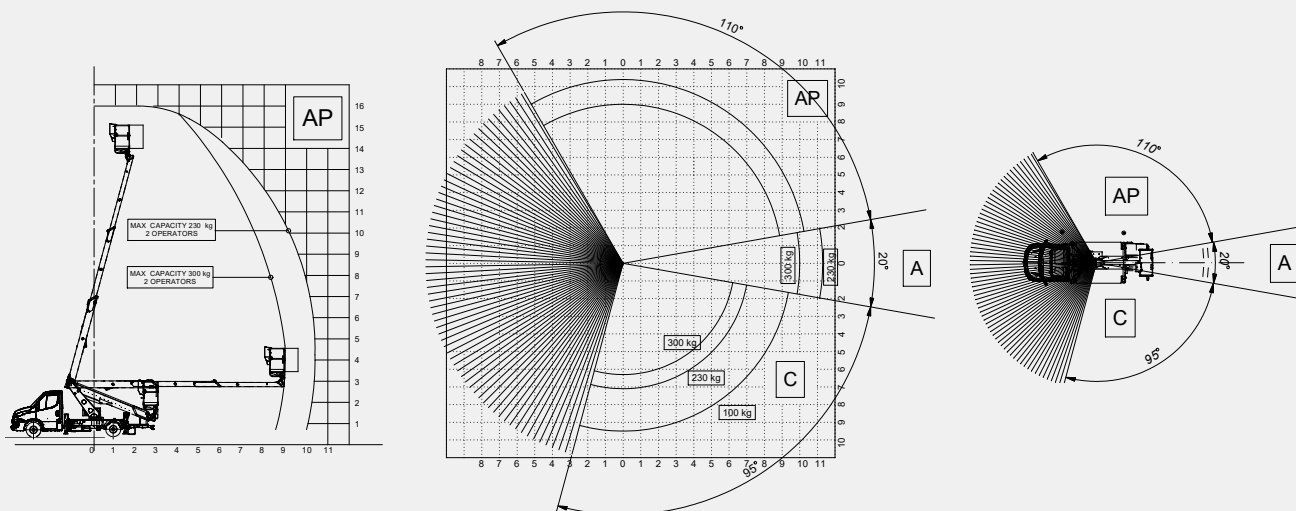


E N G

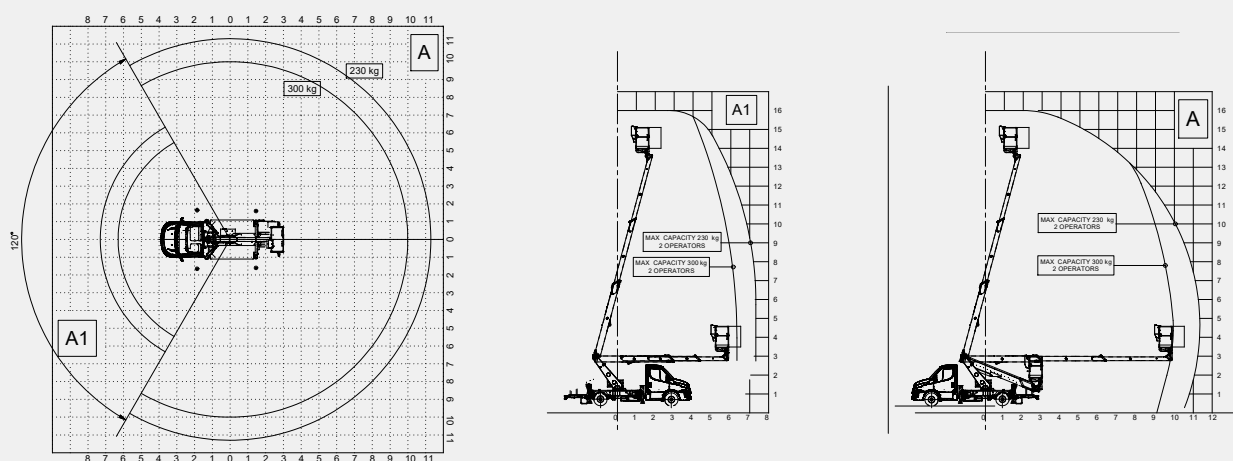


Work area

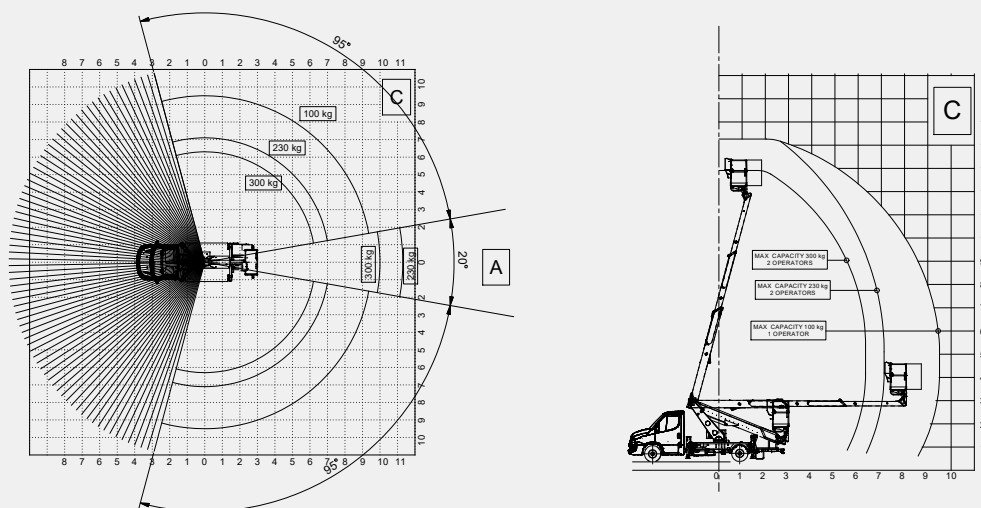
Scorpion 16 Pro Iveco P 3750 - Front outriggers opened 1 side only



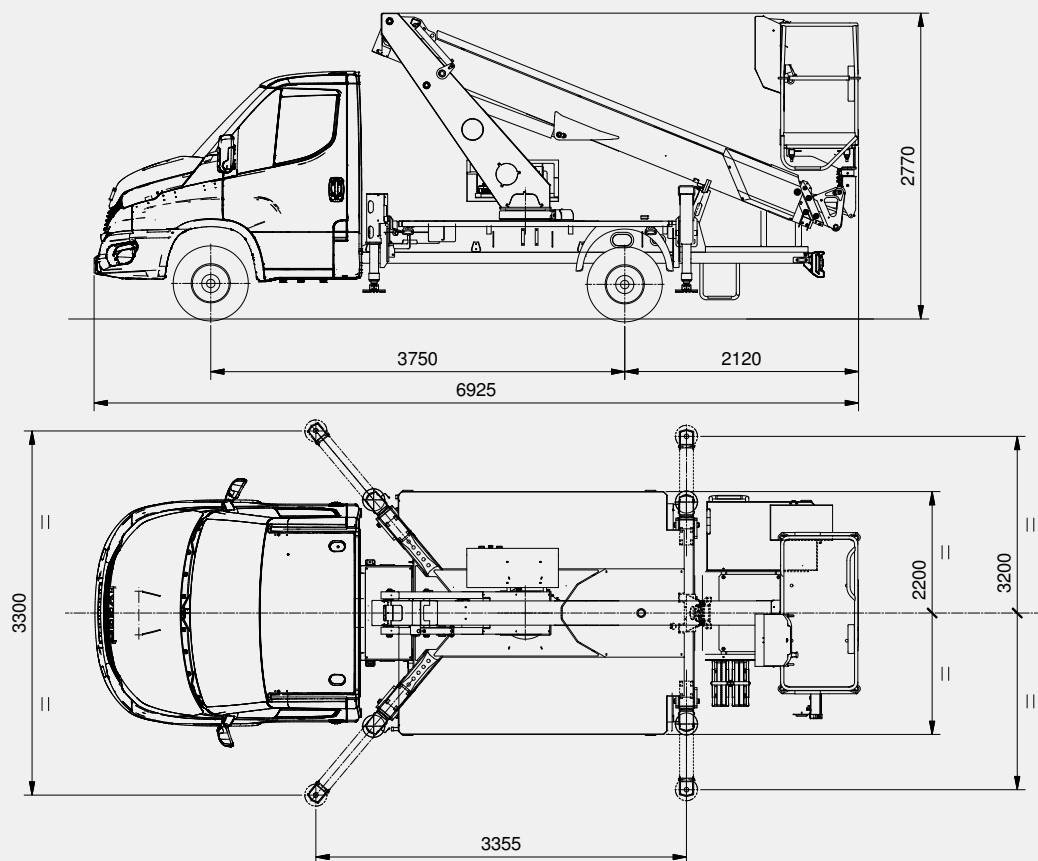
Scorpion 16 Pro Iveco P 3750 - Front outriggers fully extended



Scorpion 16 Pro Iveco P 3750 - Front outriggers closed



Technical drawings



Technical features

Maximum working height	16 m
Maximum working outreach	11.3 m
Maximum load capacity	300 kg
Basket	Alu 1,4 x 0,7 x 1,1 m
Controls	Hydraulics
Column rotation	400°
Basket rotation	+/- 90°
Outriggers	HE - HE
Machine length	6925 mm
Machine height	2770 mm
Machine width	2200 mm

Truck standard features

Iveco Daily 35S14H MY24 p.3750mm 136HP (100kW) 2.3L Euro VIe HD - MTT 3,5t	Central Locking with remote control
Mechanical gearbox - 6 gears - 500 Nm	Start & Stop
Single rear wheels	Automatic control of windshield wipers and headlights
Oil tank capacity 40L	Electric parking brake
Intelligent Speed Assistance (ISA)	TFT comfort panel
Driver drowsiness and attention warning (DDAW) system	Rear parking sensors
Tyre pressure monitoring system (TPMS)	Driver and passenger airbag
Proactive Lane Keeping Assist	235/65 R16 eco tyres

Aerial platform standard equipment

Extendable structure/cab and chassis anti-collision system
Automatic start-up and shutdown of the main engine from the basket and from the column
Crossbeams extension-retraction block when platform is stabilized
Protective casing on the control box on the column and on the basket
Two-person aluminum basket with dimensions 1400 x 1100 x 700 mm
Aerial part hydraulic controls
Outriggers hydraulic controls
Power takeoff hour counter fitted on the dashboard of the vehicle
Power takeoff on with no handbrake warning siren
Work with asymmetrical crosspieces
Work on shape
Anti-slip aluminum decking
Hand pump for emergency descent
Power takeoff with electrical start-up and automatic release
Single-phase, 220 or 110 v ac power socket and differential overload switch fitted on the basket
Thermal protection on the electrical system
Engine emergency stop button from the basket and from the column
Hydraulic rotation of the basket 90° right - 90° left with rotating actuator
Moment detection and limiting system
Warning lights on the hour counter inside the cabin showing pto on and when outriggers are outside the vehicle profile
Boom and platform treated using corrosion-resistant paint, screws in stainless steel
Hydraulic extension of crossbeams
Hoses and cables inside the booms
Lock valves on all cylinders - Hydraulic circuit maximum pressure valves
Standard Grey and Blue painting (Grey=Ral 7001 - Blue=Ral 5002)

Optional

Customized labels
Air conditioning system
Underride guards
Underride guards with plastic toolbox (only if plastic toolbox is included as optional)
Inox toolbox with dimensions 500 x 350 x 350mm
Plastic toolbox with dimensions 480 x 400 x 400mm placed under the deck
Fiberglass basket 1400 x 700 x 1100 mm (instead of standard)
Fiberglass basket 1400 x 700 x 1100 mm + insulation 1 KV (instead of standard)
Wheel chocks
Auxiliary single-phase 110 V AC - 2.2 kW electrical pump (electrical control panel and battery charger powered by an external source)
Auxiliary single-phase 220 V AC - 2.2 kW electrical pump (electrical control panel and battery charger powered by an external source)
Electrical pump 12 V DC 1.6 kW for emergency descent
Tilt sensor
Kit 2 harnesses
Kit 4 nylon outrigger plates
Remote connectivity kit
Junction debris protection kit
Air-water line supply to the basket
My Iveco - 7" radio with steering wheel controls
All season tyres
12V DC socket + 60 W LED working light on basket
12V DC socket on the basket
Red and white reflective decals on truck
12V amber light rotating beacons for truck cab + bar
12V amber light rotating beacons for truck cab + bar + triangle
Magnetic 12 V revolving blue light for truck cabin
Magnetic 12 V revolving orange light for truck cabin
Fixed aluminum side panels 100/150/200 mm height
Drop-down panels on 1 side (right) - 100/150/200 mm height
Drop-down panels on 2 sides - h 100/150/200 mm
Truck cabin painting different from standard
Aerial part painting different from standard



PM OIL&STEEL SPA
S. Cesario sul Panaro
IT - 41018 - Modena
Via G.Verdi, 22

Tel.: +39 059 936811
Fax: +39 059 936800

info@oilsteel.com
www.oilsteel.com



Oil&Steel is a brand of Manitex International