



***snake* 26**
on Iveco - P 4100

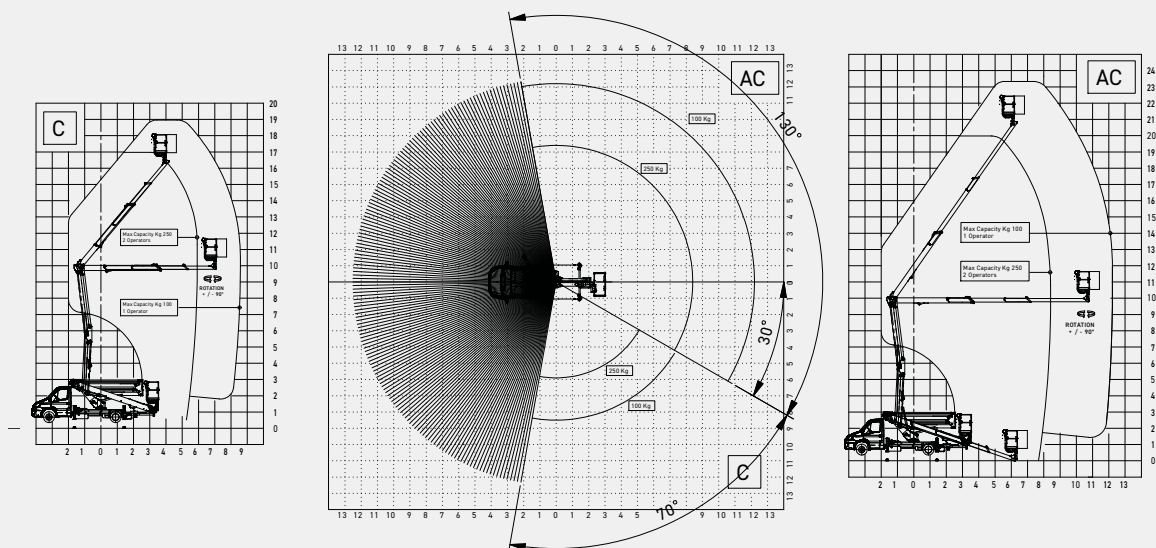


ENG

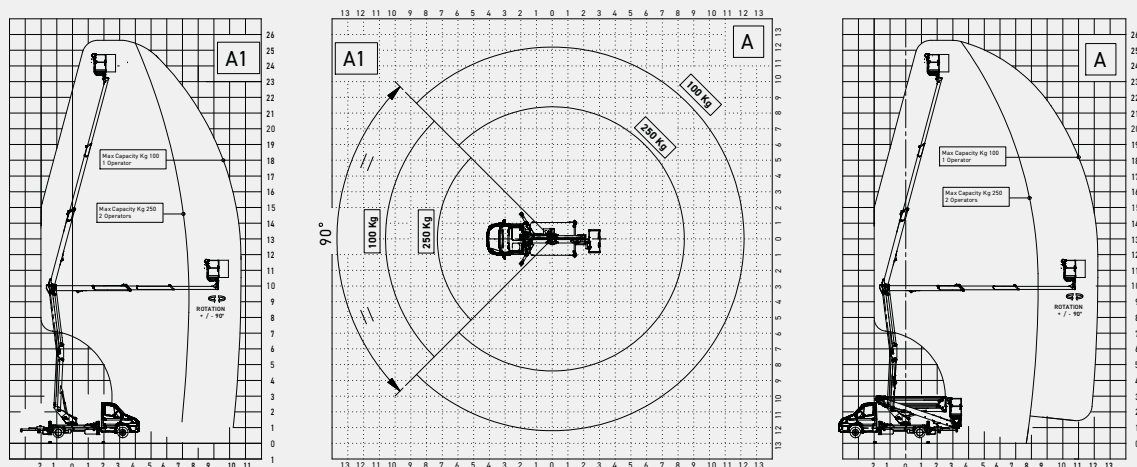


Work area

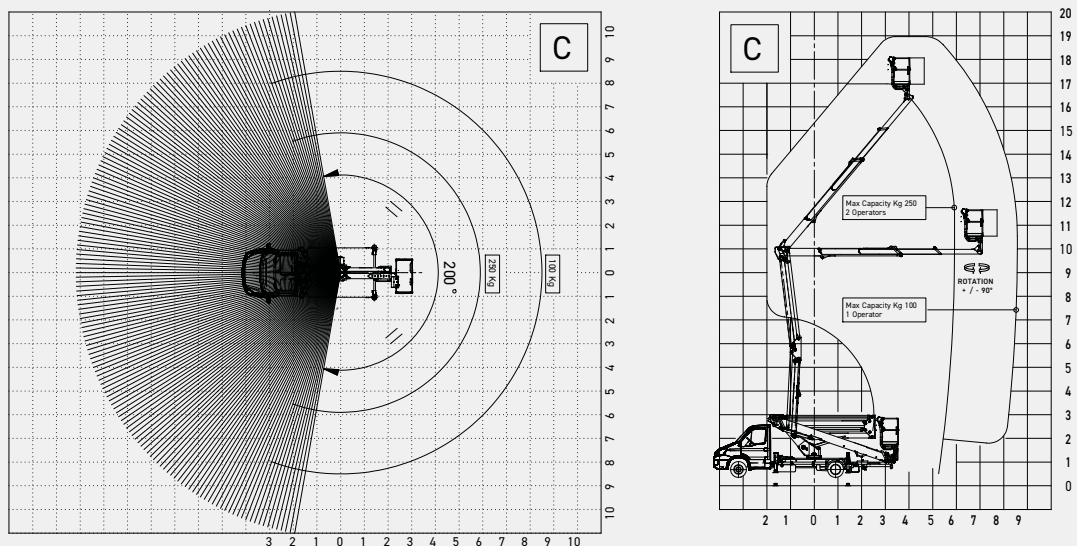
Snake 26 on Iveco Daily 35s14h - Wheelbase 4100 - Front outriggers opened 1 side only



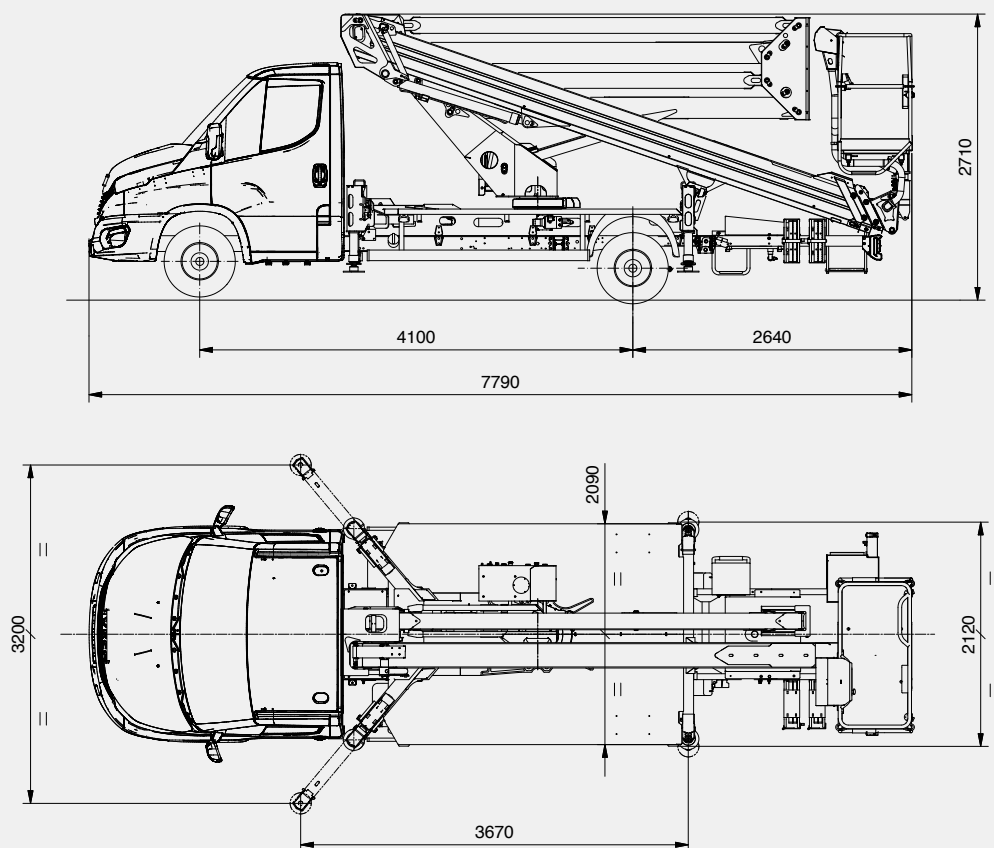
Snake 26 on Iveco Daily 35s14h - Wheelbase 4100 - Front outriggers fully extended



Snake 26 on Iveco Daily 35s14h - Wheelbase 4100 - Front outriggers closed



Technical drawings



Provisional data

Technical features

Maximum working height	25,6 m
Maximum working outreach	12,2 m
Maximum load capacity	250 kg
Basket	Alu 1,4 x 0,7 x 1,1 m
Controls	Electro-hydraulic
Column rotation	400°
Basket rotation	+/- 90°
Outriggers	HE + H
Machine length	7790 mm
Technical drawings	2710 mm
Machine width	2120 mm

Truck standard features

Iveco Daily 35S14H MY24 p.4100mm 136HP (100kW) 2.3L Euro VIe HD - MTT 3,5t	Central Locking with remote control
Mechanical gearbox - 6 gears - 500 Nm	Start & Stop
Single rear wheels	Automatic control of windshield wipers and headlights
Oil tank capacity 40L	Electric parking brake
Intelligent Speed Assistance (ISA)	TFT comfort panel
Driver drowsiness and attention warning (DDAW) system	Rear parking sensors
Tyre pressure monitoring system (TPMS)	Driver and passenger airbag
Proactive Lane Keeping Assist	235/65 R16 eco tyres

Aerial platform standard equipment

Power takeoff with electrical start-up and automatic release
Power takeoff hour counter fitted on the dashboard of the vehicle
Switch-on/off of main engine (and any auxiliary engine) from basket and column
Engine emergency stop button from the basket and from the column
Single-phase, 220 or 110 v ac power socket and differential overload switch fitted on the basket
USB plug in the basket
Electro-hydraulic aerial controls and outriggers controls
Push-button panel in basket with levers and 4" display
7" touch-screen display on column with protection
Homing Function - Memory Function - Automatic stabilisation from basket
Work with asymmetrical crosspieces
Extendable structure/cab and chassis anti-collision system
Chassis control panel for emergency aerial movement control
Chassis control panel for automatic stabilisation
Moment detection and limiting system with position control
Tilt sensor
Emergency stop button bypass
Hand pump for emergency descent
Plastic pads on outriggers
Two-person aluminum basket with dimensions 1400 x 1100 x 700 mm
Hydraulic rotation of the basket 90° right - 90° left
Boom and platform treated using corrosion-resistant paint, screws in stainless steel
Standard Grey and Blue painting (Grey=Ral 7001 - Blue=Ral 5002)
Lock valves on all cylinders - Hydraulic circuit maximum pressure valves
Thermal protection on the electrical system
Anti-slip aluminum decking

Optional

Fiberglass basket 1400 x 700 x 1100 mm (instead of standard)

Fiberglass basket 1400 x 700 x 1100 mm + insulation 1 KV (instead of standard)

Air-water line supply to the basket

Steel pads on outriggers

Kit 4 nylon outrigger plates

Kit 2 harnesses

Junction debris protection kit

12V DC socket on the basket

12V DC socket + 60 W LED working light on basket

Electrical pump 12 V DC 1.6 kW for emergency descent

Auxiliary single-phase 220 V AC - 2.2 kW electrical pump (electrical control panel and battery charger powered by an external source)

Magnetic 12 V revolving orange light for truck cabin

Magnetic 12 V revolving blue light for truck cabin

12V amber light rotating beacons for truck cab + bar

12V amber light rotating beacons for truck cab + bar + triangle

Wheel chocks

Plastic toolbox with dimensions 480 x 400 x 400mm placed under the deck

Underride guards

Red and white reflective decals on truck

Oil tank protection

Fixed aluminum side panels 100/150/200 mm height

Drop-down panels on 1 side (right) - 100/150/200 mm height

Drop-down panels on 2 sides - h 100/150/200 mm

Aerial part painting different from standard

Customized labels

Remote connectivity kit

Working height limiting system (Rental Kit)

LED lights on stabilizers

Truck cabin painting different from standard

Air conditioning system

All season tyres

My Iveco - 7" radio with steering wheel controls



PM OIL&STEEL SPA
S. Cesario sul Panaro
IT - 41018 - Modena
Via G.Verdi, 22

Tel.: +39 059 936811
Fax: +39 059 936800

info@oilsteel.com
www.oilsteel.com



Oil&Steel is a brand of Manitex International