

info@tadano.com
www.tadano.com



Tadano Ltd.
KANDA SQUARE 18th Floor, 2-2-1 Kanda-Nishikicho,
Chiyoda-ku, Tokyo 101-0054, Japan
Phone: +81-3-6811-7309



©Tadano Ltd. 2025. Tadano is a registered trademark of Tadano Ltd. or its subsidiaries.



ROUGH TERRAIN CRANE

GR-1000EX-4

100 METRIC TON CAPACITY

GR-900EX-4

90 METRIC TON CAPACITY

GR-700EX-4

70 METRIC TON CAPACITY



Photo: GR-1000EX-4 (optional model)

Reaching new heights



Next-Generation RTs

In the making of products at Tadano, our number one priority is safety. Tadano's next-generation rough terrain cranes facilitate more efficient workflows and deliver improved performance with an engine that meets the latest emission standards, while facilitating work safety and providing increased comfort. With a redesigned cab that enhances operability and visibility, the Tadano GR-1000EX-4, GR-900EX-4, and GR-700EX-4 rough terrain cranes offer one of the best operator experiences in the industry. Backed by trust earned over 100 years, Tadano's high levels of safety, quality, and efficiency in each crane adapt to the evolving needs of your business. Our next generation of rough terrain cranes carries on this tradition. Experience the new rough terrain cranes that are the pride of Tadano.



Photo: GR-1000EX-4 (optional model)

This class-leading 51 m boom model expands the range of the work you can do.

GR-1000EX-4

Crane capacity: 100 metric ton
5-section boom: 51.0 m
2-staged bi-fold jib: 10.1 m / 17.7 m
Overall length: approx. 15,185 mm
Overall width: approx. 3,315 mm
Overall height: approx. 3,805 mm



This model follows 47 m boom as the standard model while having an improved lifting performance.

GR-900EX-4

Crane capacity: 90 metric ton
5-section boom: 47.0 m
2-staged bi-fold jib: 10.1 m / 17.7 m
Overall length: approx. 14,375 mm
Overall width: approx. 3,315 mm
Overall height: approx. 3,805 mm



This low-weight model dramatically increases convenience of transportation.

GR-700EX-4

Crane capacity: 70 metric ton
5-section boom: 47.0 m
2-staged bi-fold jib: 10.1 m / 17.7 m
Overall length: approx. 14,375 mm
Overall width: approx. 3,315 mm
Overall height: approx. 3,820 mm



Photo: Optional model

Crane		Carrier	
Ultimate Boom for Rough Terrain Crane	03	Smooth Transmission	11
New Super Structure Frame		Travel Speed	
Winch Drum Camera	04	High Performance Engine	
Catwalk for Easy Access to Cab		New Carrier Frame	12
Improved Accessibility to Cab		TADANO View System	
Tilttable Cab		Clearance Sonar	
Bi-Fold Jib	05	Improved Accessibility to Cab	
Assist Cylinder for Jib		Four Steering Modes	13
Two Telescoping Modes 1 & 2		Dashboard Indicator and Warning Symbols	14
Two Winches with Cable Follower		Traveling and Transportation	15
Optimally-Designed Cab	07	Reduced Fuel Consumption	
Automatic Moment Limiter [AML-E]	08	HELLO-NET	16
Large Multi-Function Display		HELLO-DATA LINK	
Smart Counterweight	09	Standard Equipment	
Smart Chart System	10		
		WORKING RANGE & DIMENSIONS 17	

NEW DESIGN



Ultimate Boom
for Rough Terrain Crane

Crane

The rounded boom is made of high tensile steel, which allows for decreased boom weight as well as increased boom strength. In addition, the high-performance AML-E supports operational safety.

Longest Boom and Speedy Operation

Max. boom length: **51.0 m** [GR-1000EX-4]

47.0 m [GR-900EX-4]

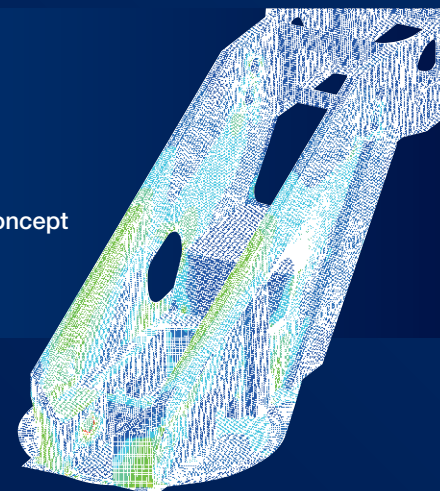
47.0 m [GR-700EX-4]

Telescoping mechanism: 2 hydraulic cylinders with wire ropes
Synchronization telescopic system makes the fast operation possible 2 telescoping modes selectable according to works.

New Super Structure Frame

When developing the crane structure, importance is attached to the shape that is best suited for crane operation. FEM analysis is used to create the design. It is also important that the slewing structure be true to Tadano's original concept and be both rigid and compact while maintaining a desirable overall height.

*FEM: Finite Element Method



Emergency
Engine
Stop Switch



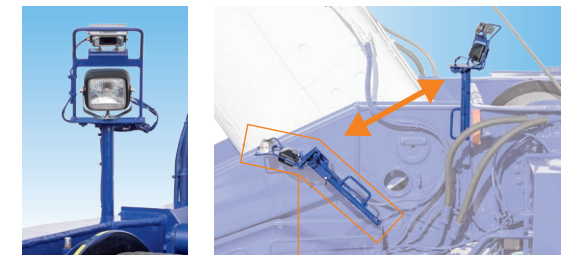
Rubber Floor Mat



Outrigger
Control
Panel



Winch Drum Camera



Stowed position when transporting

Two-Roll Sunshade



Adjustable in any position

Longer Wiper Blade

Flat Windshield

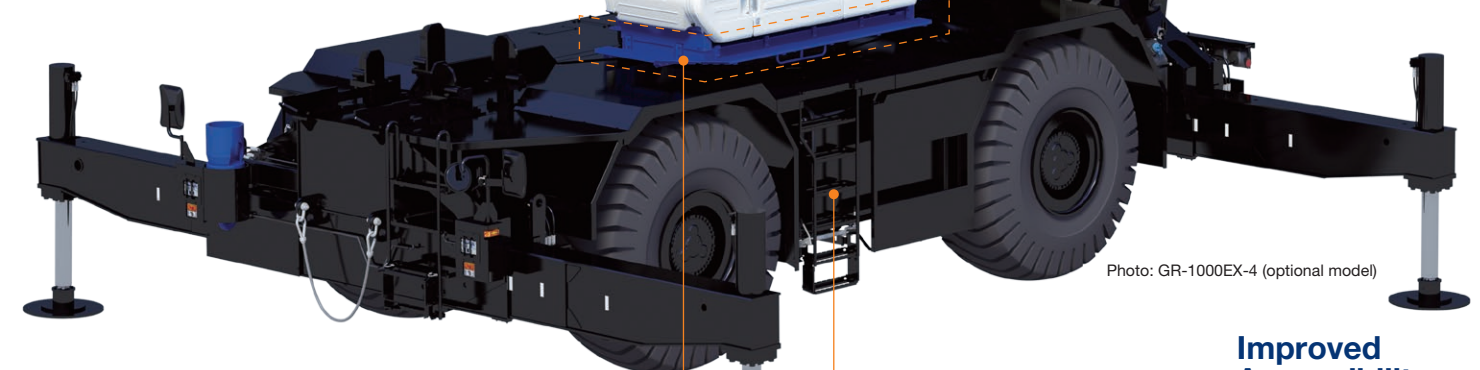


Photo: GR-1000EX-4 (optional model)



Cab tilt indicator
and switch

Tiltable Cab

You can operate the crane comfortably by tilting the cab during high hoisting operations such as lifting with the jib. The cab tilting angle is between 0° and 20°.



Catwalk
for Easy Access to Cab



Improved
Accessibility
to Cab



New Designed Step *Left side

Bi-Fold Jib

A two-stage, bi-fold lattice-type jib can be offset at 3.5°, 25°, and 45° to enable the crane to carry out jobs that require extra reaching ability.

Assist Cylinder for Jib

When mounting and stowing the jib, the assist hydraulic cylinders are used resulting in increased work efficiency.



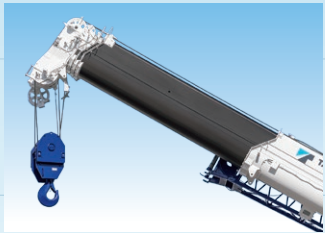
Two Telescoping Modes 1 & 2

The operator has enhanced capabilities with two boom telescoping options whichever suits the lift needs.



Mode 1

Mode 1 is extension of 2nd section only. Then follows the synchronized extension of 3rd, 4th and 5th sections.



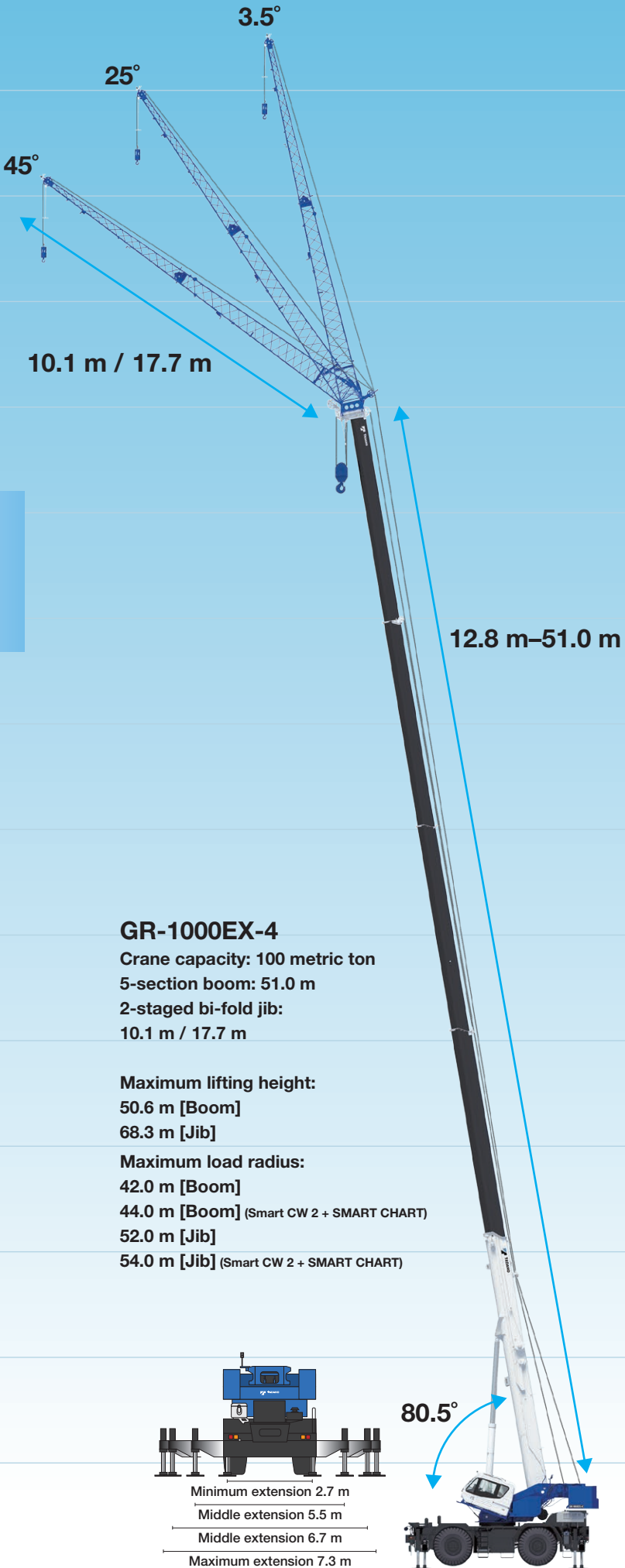
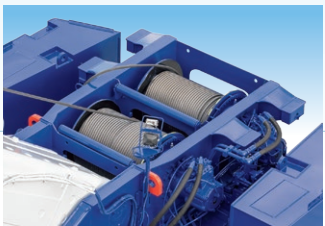
Mode 2

Mode 2 is synchronized extension of 3rd, 4th and 5th sections. Then 2nd section extends independently.

Two Winches with Cable Follower

Both the main winch and the auxiliary winch have powerful line pull and operate at high speeds thus enhancing work efficiency.

*Maximum permissible line pull may be affected by wire rope strength.



GR-1000EX-4

Crane capacity: 100 metric ton
5-section boom: 51.0 m
2-staged bi-fold jib:
10.1 m / 17.7 m

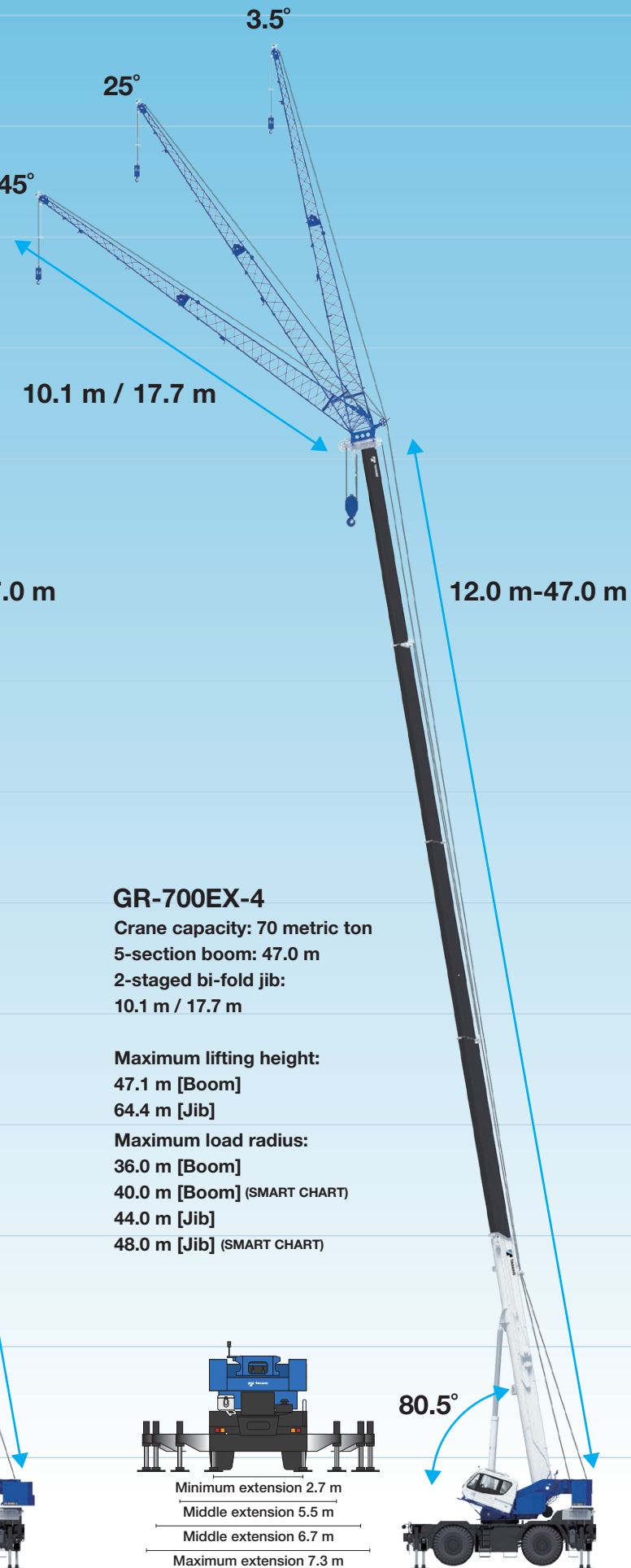
Maximum lifting height:
50.6 m [Boom]
68.3 m [Jib]
Maximum load radius:
42.0 m [Boom]
44.0 m [Boom] (Smart CW 2 + SMART CHART)
52.0 m [Jib]
54.0 m [Jib] (Smart CW 2 + SMART CHART)



GR-900EX-4

Crane capacity: 90 metric ton
5-section boom: 47.0 m
2-staged bi-fold jib:
10.1 m / 17.7 m

Maximum lifting height:
47.1 m [Boom]
64.4 m [Jib]
Maximum load radius:
40.0 m [Boom]
42.0 m [Boom] (Smart CW 2 + SMART CHART)
50.0 m [Jib]
52.0 m [Jib] (Smart CW 2 + SMART CHART)



GR-700EX-4

Crane capacity: 70 metric ton
5-section boom: 47.0 m
2-staged bi-fold jib:
10.1 m / 17.7 m

Maximum lifting height:
47.1 m [Boom]
64.4 m [Jib]
Maximum load radius:
36.0 m [Boom]
40.0 m [Boom] (SMART CHART)
44.0 m [Jib]
48.0 m [Jib] (SMART CHART)

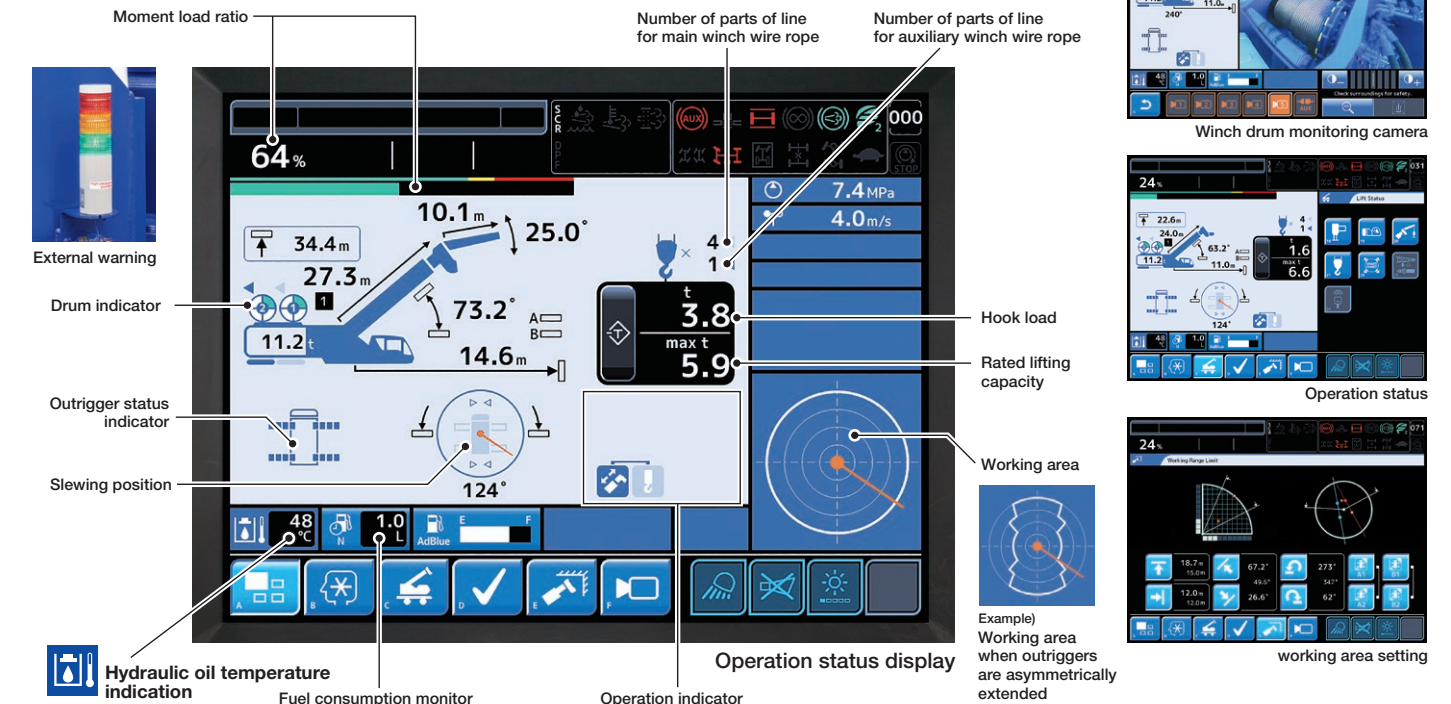
Optimally-Designed Cab

Crane cab and equipment designed for comfort and operational efficiency.

Automatic Moment Limiter [AML-E]

Large Multi-Function Display

The 10.4 inch color touch panel consolidates operation information and settings for increased work efficiency and comfort. The touch panel is pressure sensitive to handle gloved operation.



Seat Adjustment

Multiple seat adjustment positions for ease of operation.

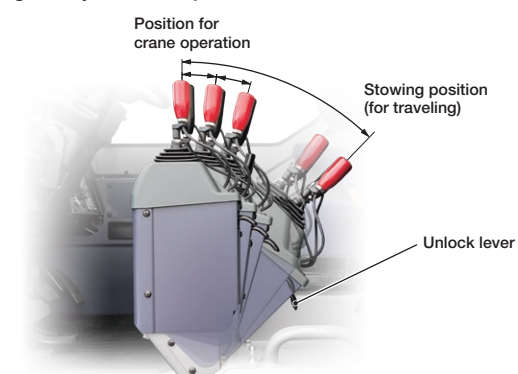


Adjustment of Control Lever Stand

- The control lever stand has a 3-stage adjustment feature.
- Before you enter or exit the cab, or when you complete the crane operation, set the control lever stand on the left to the stowing position.
- The unlock lever is used by pulling to adjust for all positions of the control lever stand.



The control levers are smooth and responsive to the operators touch.



Multi-Function Display Operation Switch

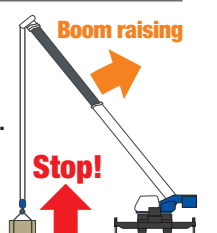
Convenient hand controls are also available for when operating the touchscreen is difficult (for instance when the seat is sliding back).



Safety Control for Boom Raising Operation

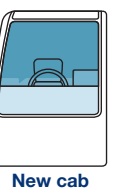
Prevent overload using boom raising operation for lifting a load off the ground.

*Release switch available for emergency operation



Visibility

The shape and height of the instrument panel as well as the angle of the windshield have all been designed for optimum forward visibility.





Smart Counterweight

SMART CW GR-1000EX-4/GR-900EX-4

Uses the new Smart Counterweight System

These are the first rough terrain cranes with Tadano's Smart Counterweight system, which allows the counterweight to be moved between two mounting positions. This feature improves lifting capacity by up to 20%.

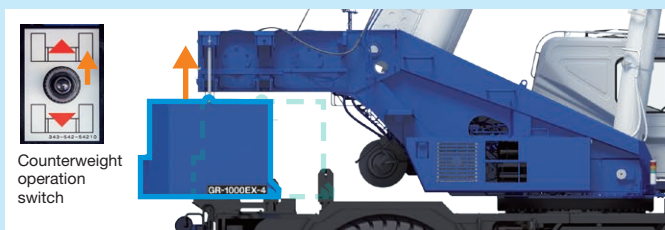
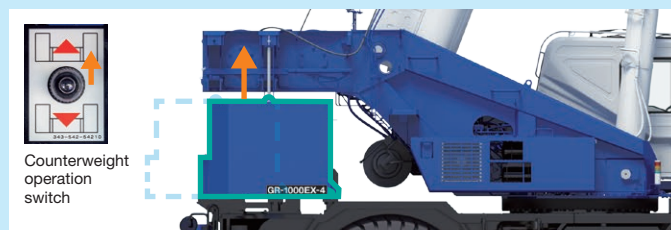
Smart Counterweight 1 (Front position)



Smart Counterweight 2 (Rear position)



Hoist the counterweight and set it in either the front or rear position.



Slew the crane 180° and fully extend the counterweight cylinder. Connect the weight with the slewing table and retract the cylinder, fixing it in place.



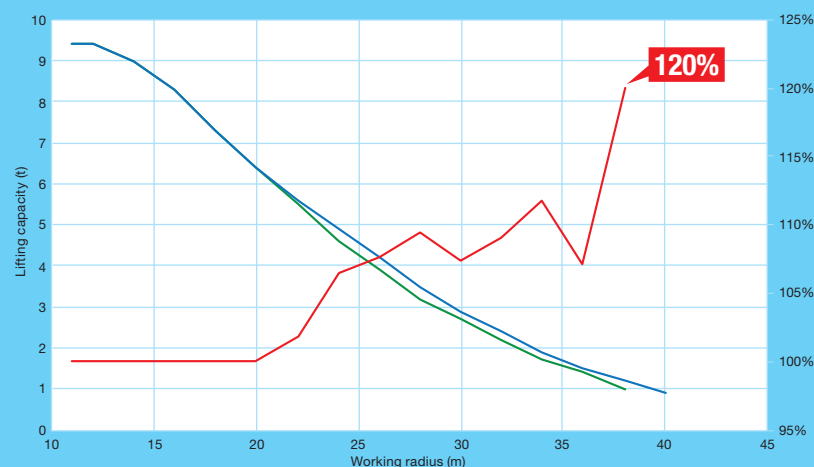
Tail Swing: 4,190 mm



Tail Swing: 4,790 mm

Comparison of Smart Counterweight 1 and 2 (51 m boom length)

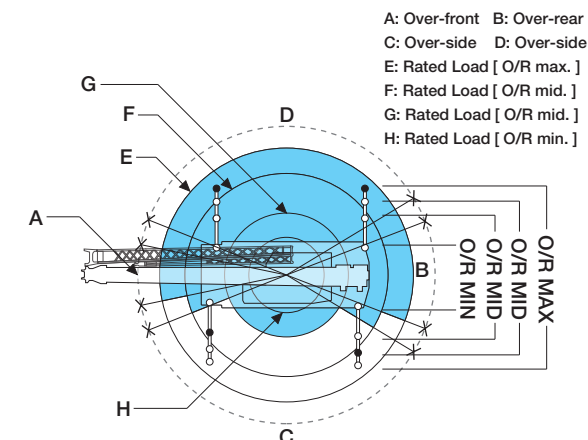
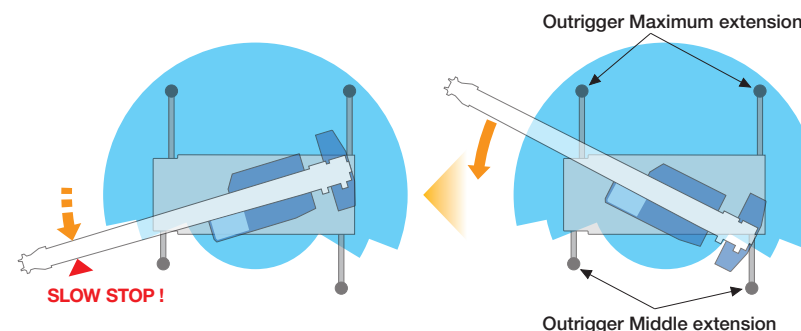
GR-1000EX-4 : Smart Counterweight 2
GR-1000EX-4 : Smart Counterweight 1
Advantage: Rear position/Front position (%)



Asymmetric Outrigger Extension Width Control

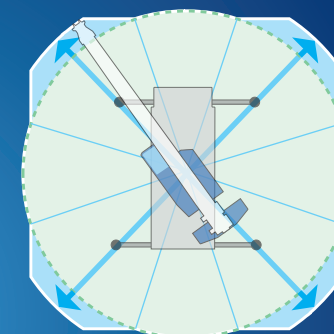
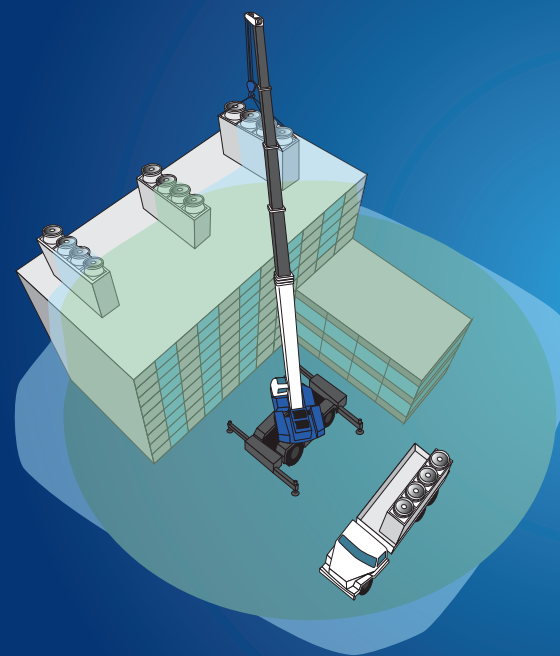
When operating the crane with the asymmetric outriggers extended, the AML-E detects the extension width of all of the crane's outriggers (front, rear, left and right) to determine the maximum load capacity in each area. When slewing the boom from the longer outrigger area to the shorter outrigger area, the AML-E detects the motion and displays the maximum capacity according to the extension width of each of the outriggers, and brings the motion to a slow stop before it reaches the maximum capacity.

The AML-E's slow stop function will help to minimize any safety risks even in the cases of operator error.



Smart Chart System

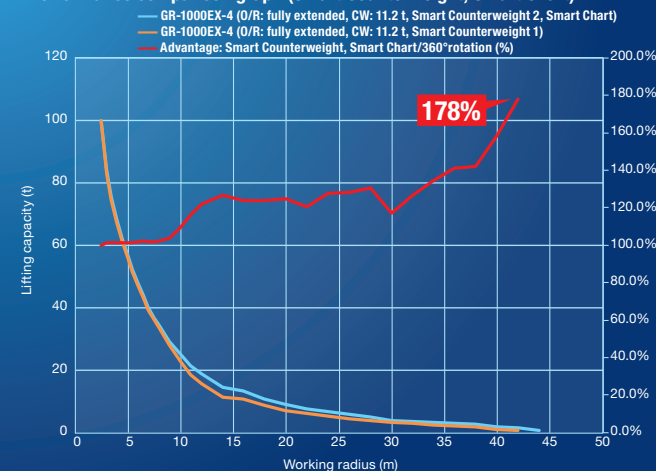
Smart Chart expands the working area, allowing you to get the best crane performance in any outrigger extension setup.



Under maximum outrigger extension setups

The Smart Chart taps the potential of a crane by expanding the conventional circular working area into a square one, improving efficiency.

Performance comparison graph (Smart Counterweight, Smart Chart)



Carrier

The GR-1000EX-4, GR-900EX-4 and GR-700EX-4 have a compact width/height 2-axle carrier which offers improved maneuverability and reduced footprint for ease of transportation.



Travel Speed: 36 km/h

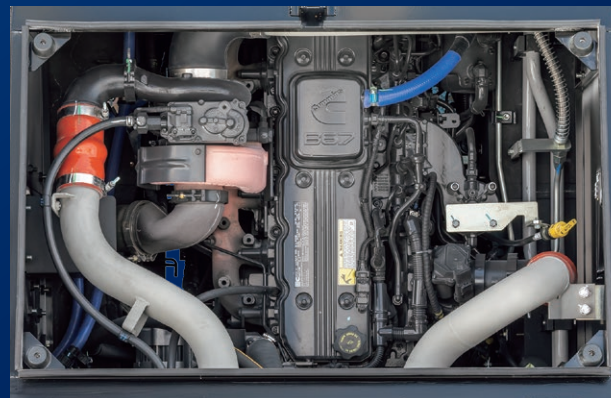
Photo: GR-1000EX-4 (optional model)

Smooth Transmission

- Electronically controlled, fully automatic transmission.
- Torque converter with full powershift driving axle selector.
- 6 forward and 2 reverse speeds, constant mesh.

3 speeds - High range - 2 wheel drive; 4 wheel drive

3 speeds - Low range - 4 wheel drive



High Performance Engine

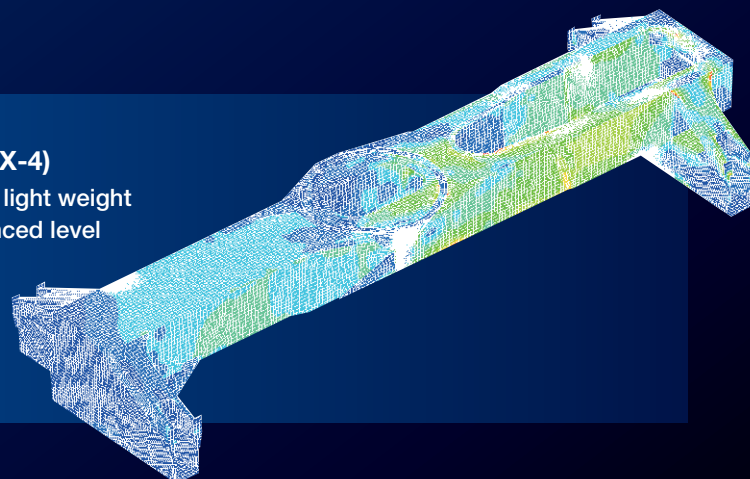
Cummins B6.7
4 cycle, turbo charged and after cooled.

Horse power kW (HP): Gross 209 (280) at 2,200 min⁻¹{rpm}
Max. torque N·m: 1,152 at 1,500 min⁻¹{rpm}

New Carrier Frame (GR-1000EX-4/GR-900EX-4)

The new carrier frame design is engineered so that its light weight is compatible with its high rigidity to achieve an advanced level of performance. As a result, the rigidity is enhanced and facilitates highly stabilized maneuverability for the new model of crane.

*Compared with our conventional crane models



TADANO View System

Improves visibility through an above-the-vehicle image shown on the large multi-function display.

*Camera range is limited. Do not rely only on the image. Confirm clearance around the vehicle directly before driving.

Right front view monitor



Right front view camera



Right front and Rear view monitor

Rear view camera



Rear view monitor

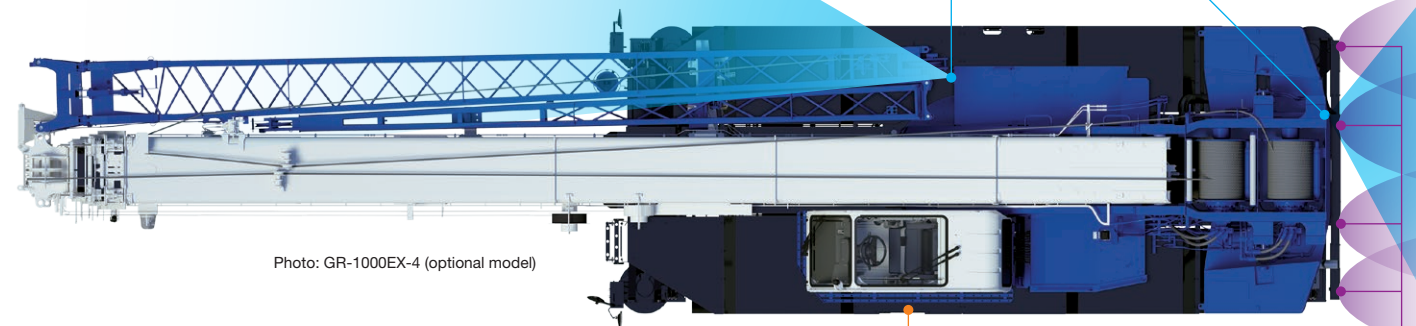
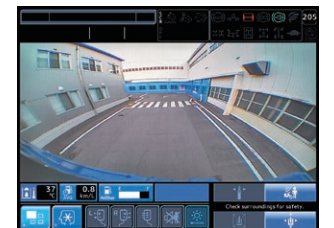
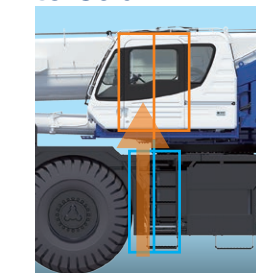


Photo: GR-1000EX-4 (optional model)

Improved Accessibility to Cab



Clearance Sonar

Detects obstacles right behind the vehicle, and warns you with a flashing icon on the indicator and buzzer sound.

*Detection distance: approx. 0.3 m - 2.6 m



Clearance sonar monitor



Clearance sonar

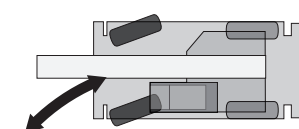
Axle

Front: Full floating type, steering and driving axle with planetary reduction.

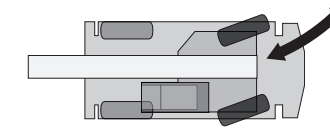
Rear: Full floating type, steering and driving axle with planetary reduction and non-spin rear differential.

Four Steering Modes

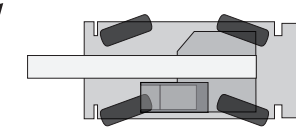
Hydraulic power steering controlled by steering wheel.



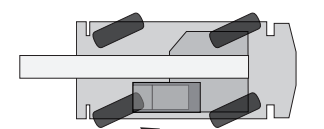
2 Wheel Front



2 Wheel Rear

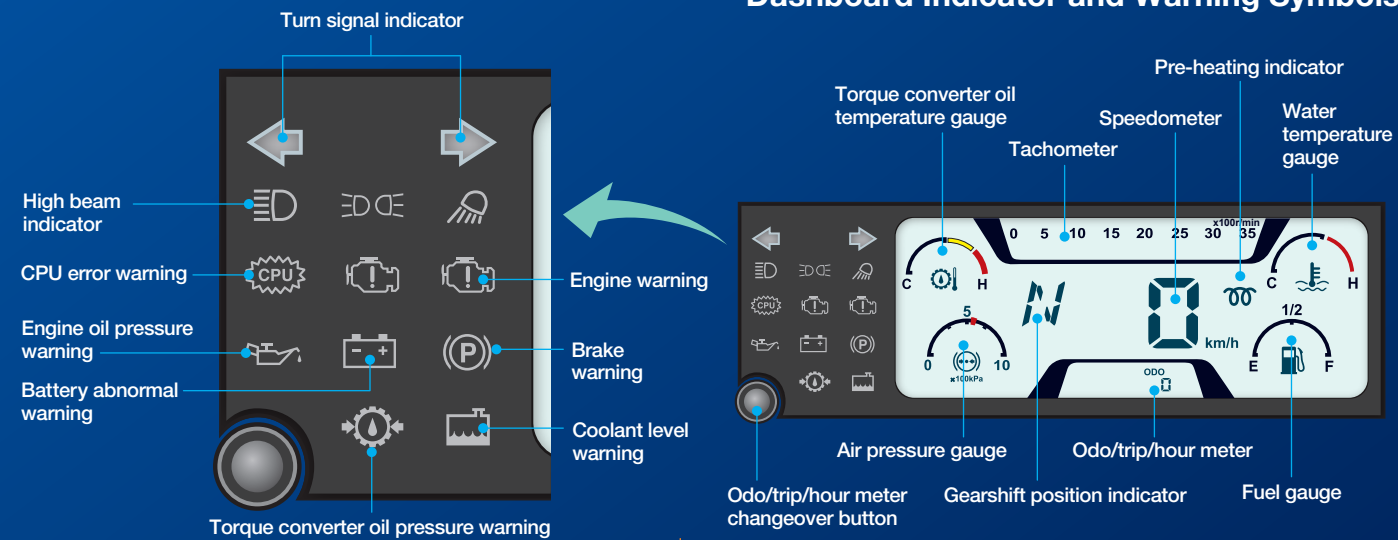


4 Wheel Coordinated



4 Wheel Crab

Dashboard Indicator and Warning Symbols

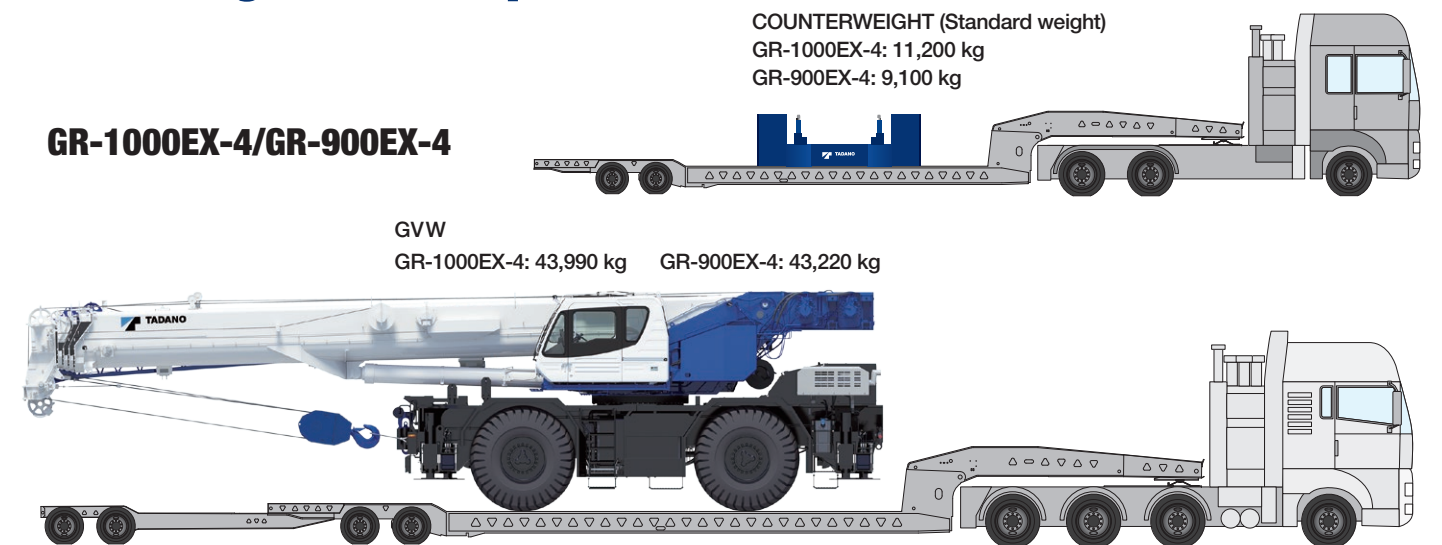


Traveling and Transportation

COUNTERWEIGHT (Standard weight)
GR-1000EX-4: 11,200 kg
GR-900EX-4: 9,100 kg

GR-1000EX-4/GR-900EX-4

GVW
GR-1000EX-4: 43,990 kg GR-900EX-4: 43,220 kg



GR-700EX-4

GVW GR-700EX-4: 44,730 kg

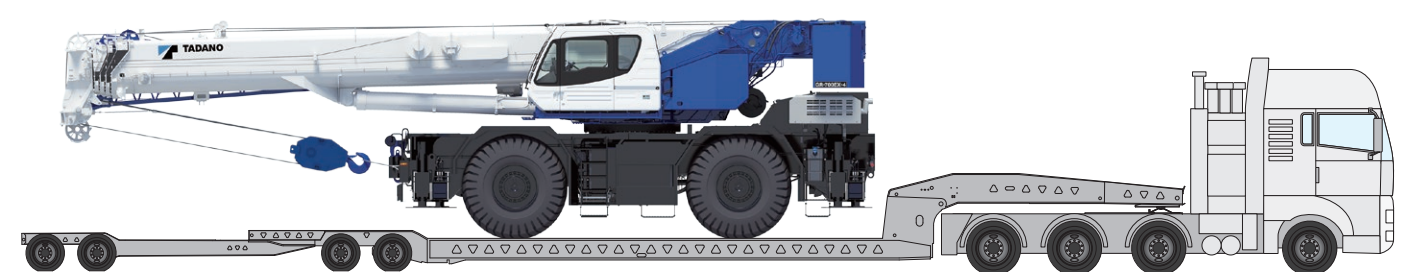
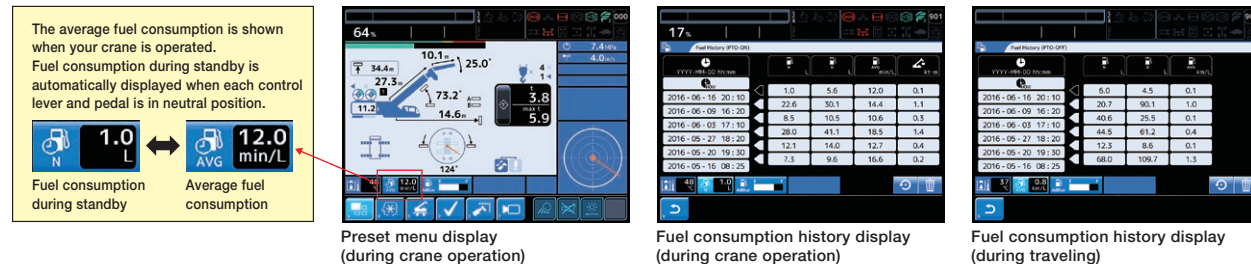


Photo: Optional model

Reduced Fuel Consumption

Fuel Monitoring

Fuel consumption monitoring allows an operator to minimize fuel waste from unnecessary acceleration and idling.



Positive Control System

Effectively controls the quantity of hydraulic pump discharge during crane operation in response to the amount of movement applied, and reduces CO₂ consumption.

Eco Mode System

Controls the maximum engine speed at the time of crane operation and enables fuel consumption and CO₂ emission to decrease by Max. 28% with Eco mode 1, and Max. 37% with Eco mode 2, and noise level is reduced.

Automatic Pump Disconnect

When the automatic pump disconnect switch is set to ON and the crane is not in use for a duration of time, the crane's hydraulic pump automatically shuts off, helping to reduce fuel consumption.

Three settings are available for the duration of the crane operation standby before the pump shuts off: MIN, MID and MAX.

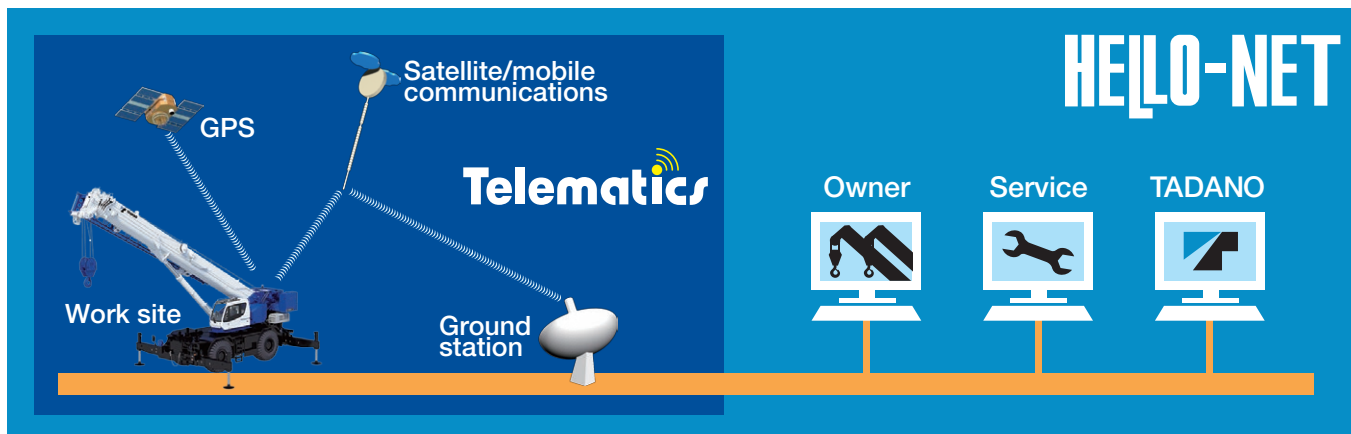
MIN: 1 minute MID: 3 minutes MAX: 5 minutes

Fuel consumption
CO₂ emissions

Down
max.
12%

HELLO-NET

HELLO-NET is a tool that connects the crane operations with owners, their service staff and the manufacturer through satellite. This high quality telematic tool collects data of the crane including working history, maintenance data and machine location. HELLO-NET can be accessed by the manufacturer to assist with downtime and to help improve Tadano support services.



Telematics (machine data logging and monitoring system) with HELLO-NET via internet (*availability depends on the situation).

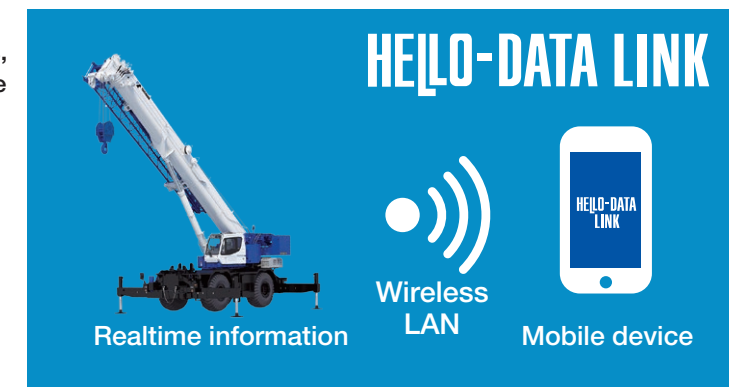
DETAILS: The availability of data communication systems, such as satellite or mobile communications which serve to widen the service area differs according to individual countries. Besides, there are some countries where the system itself is not in use yet. For details, please contact your distributor or our sales staff in charge.

HELLO-DATA LINK

Smartphone App

HELLO-DATA LINK connects cranes to mobile devices by wireless LAN, allowing you to receive operating status, indications, error codes and other information in real-time from outside the cab.

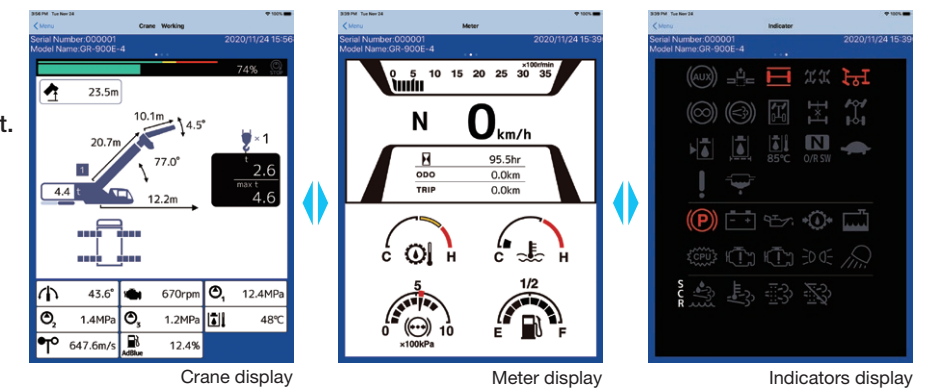
HELLO-DATA LINK helps crane and site supervisors to monitor operating status and stay informed on repairs and maintenance.



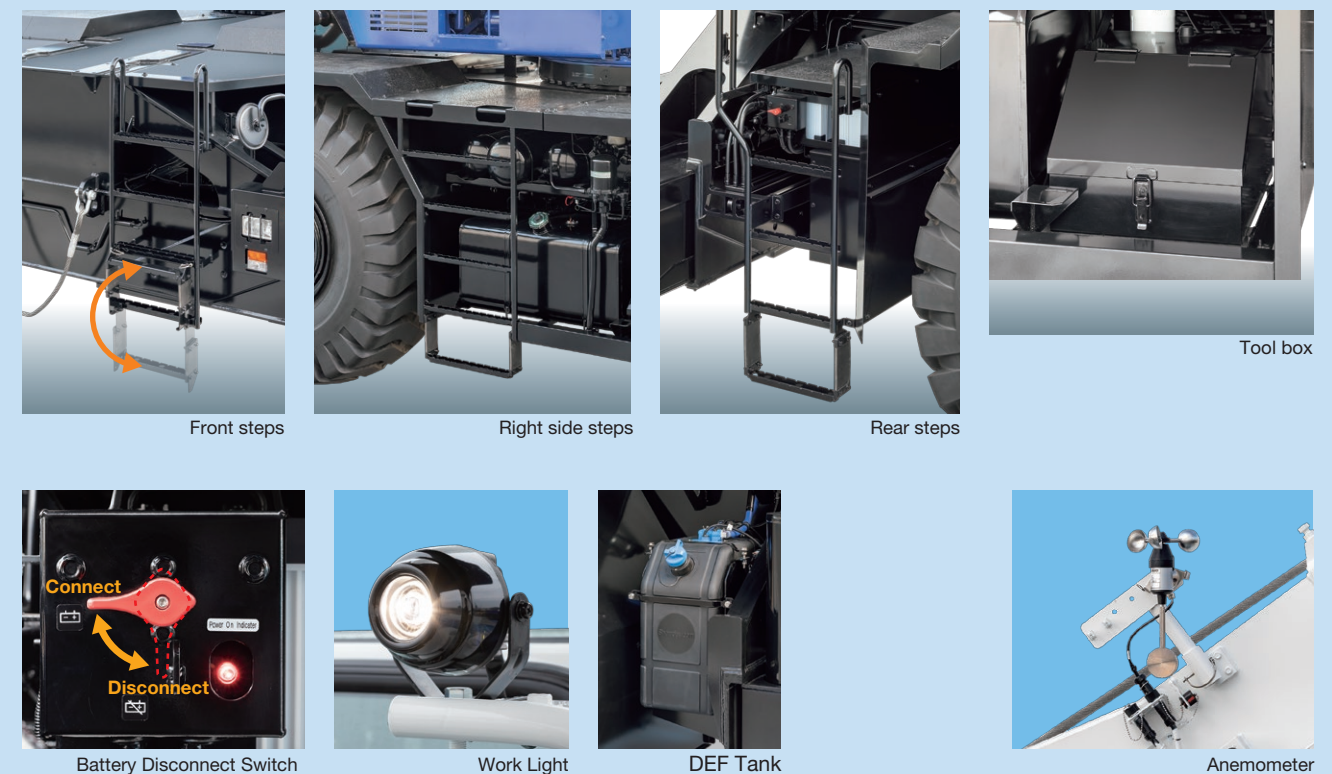
Three Working Displays

*Available display modes and information may differ depending on machine model.

Display information from connected machines via handy smartphone or tablet. Swipe to easily change screens.



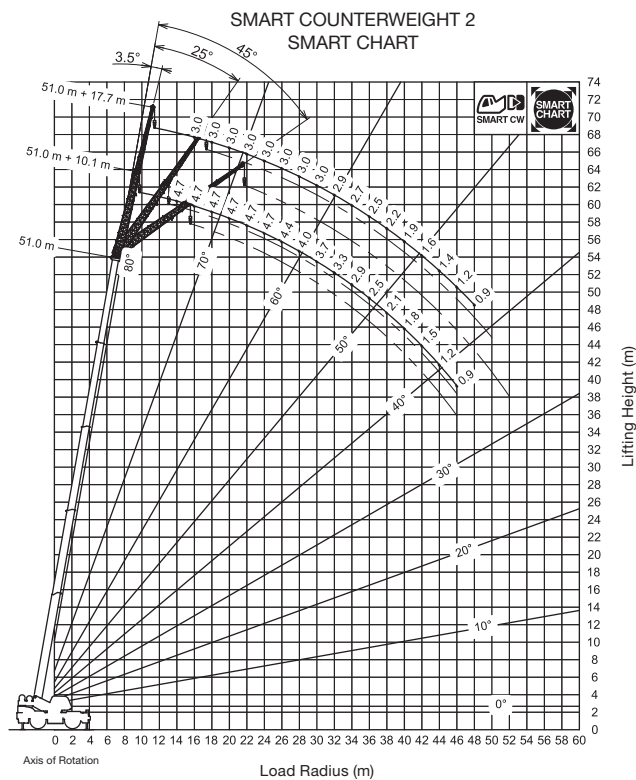
Standard Equipment



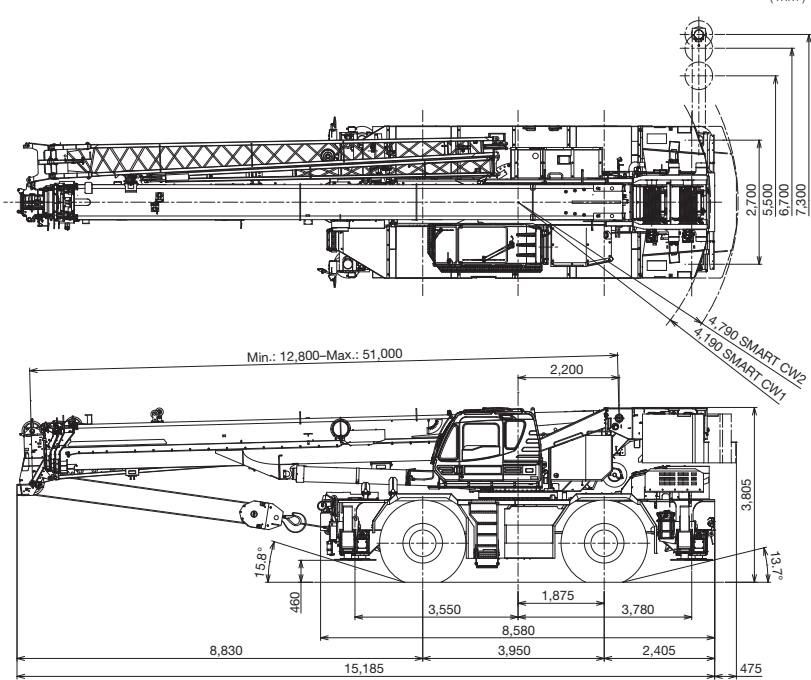
WORKING RANGE & DIMENSIONS

GR-1000EX-4

WORKING RANGE

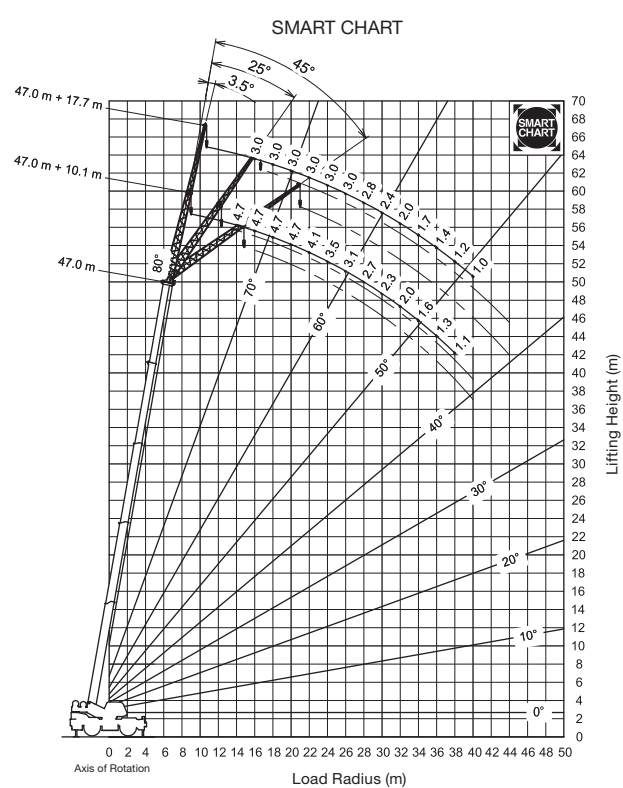


DIMENSIONS

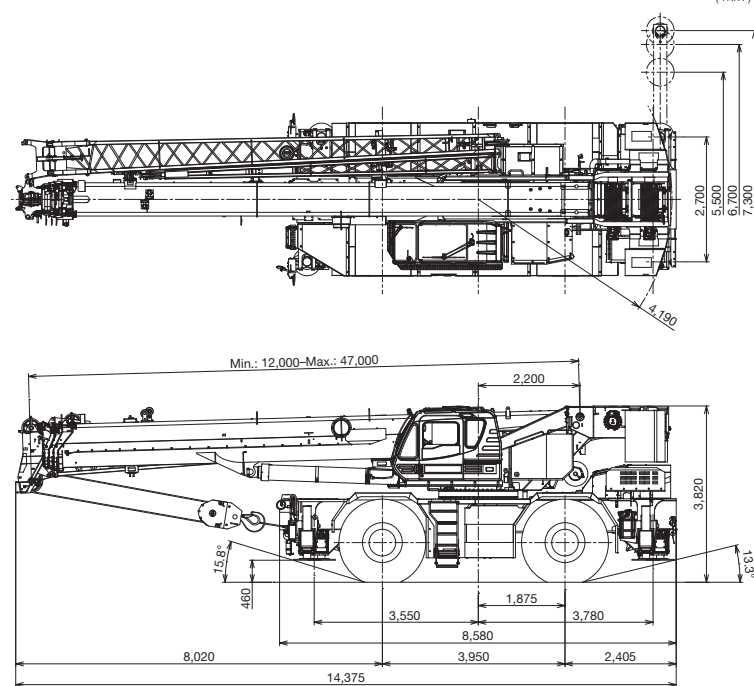


GR-700EX-4

WORKING RANGE

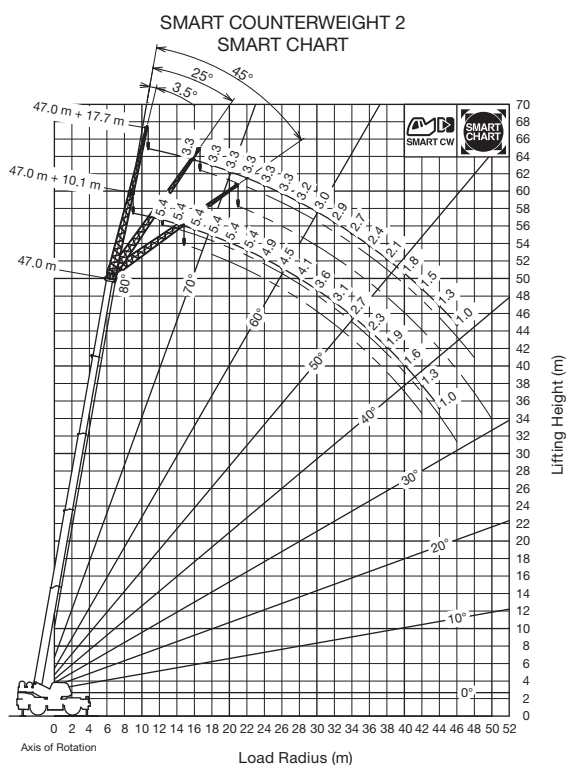


DIMENSIONS



GR-900EX-4

WORKING RANGE



DIMENSIONS

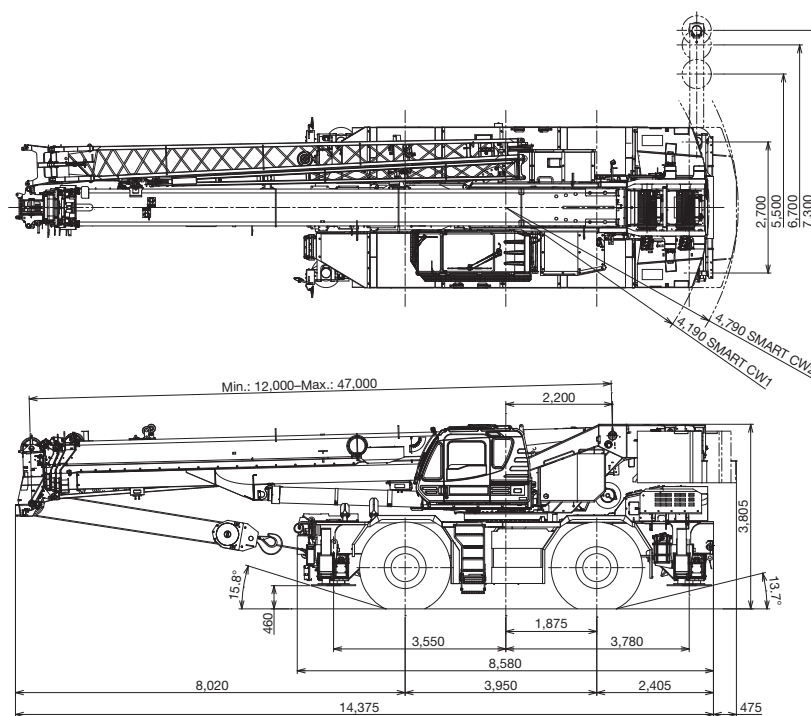


Photo: Optional model

