

AS-15MCJ

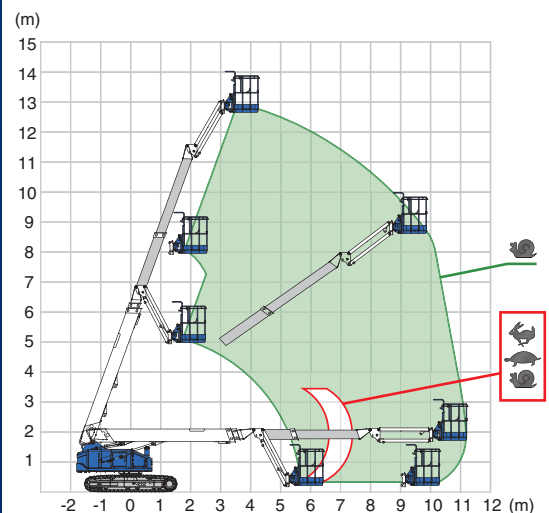
TELESCOPIC CRAWLER BOOM

MODEL HIGHLIGHTS

- 360° continuous turntable rotation
- Steel tracks with grey non-marking pads
- Auxiliary lowering control
- Low emission engine
- Full range traveling
- Low ground pressure
- Jib



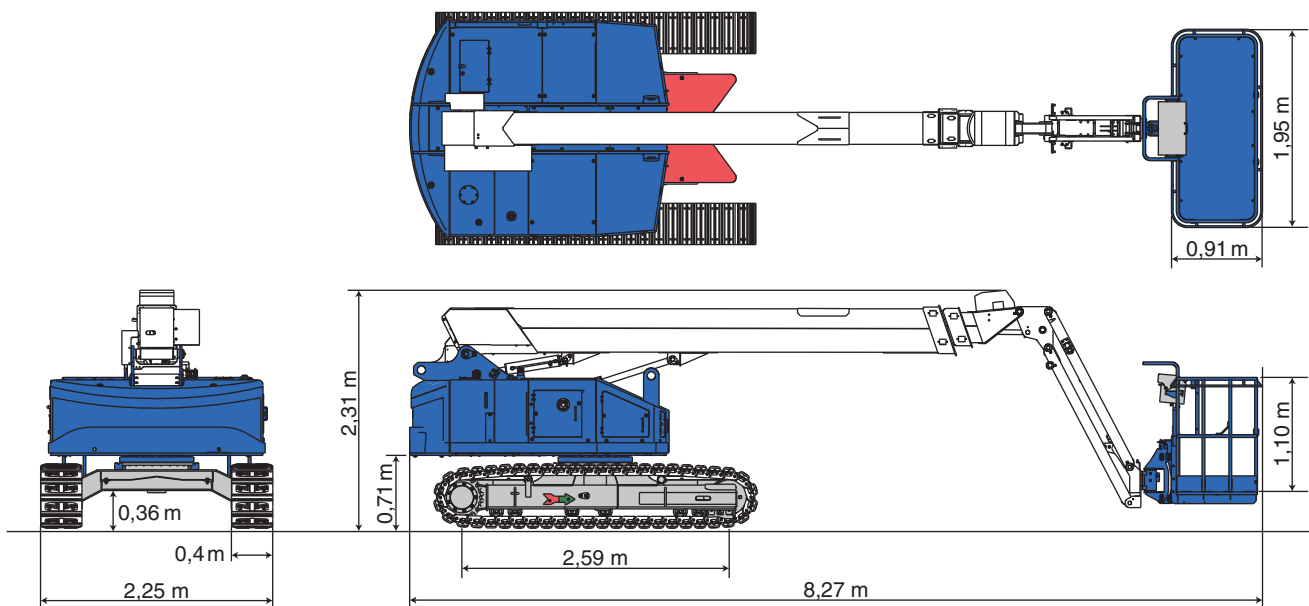
AS-15MCJ Range of motion



Model	AS-15MCJ
Max. platform capacity	250 kg
Platform size	1,95 x 0,91 x 1,10 m
Max. work height	14,80 m
Max. outreach	11,20 m

When difficult areas need to be reached, the easy-to-store and versatile AS-15MCJ helps you reach up, over and around.

Model		AS-15MCJ	
SPECIFICATIONS			
Max. work height	14,80 m	POWER SOURCE	
Max. outreach	11,20 m	Engine type	Kubota D1305
Allowable tilt	5°	Rated power	17,5 kW / 2400 min ⁻¹
Max. platform capacity	250 kg	Fuel tank capacity	100 l
OPTIONS			
Platform size (L x W x H)		8 ft platform	2,53 x 0,89 x 1,10 m
6 ft	1,95 x 0,91 x 1,10 m	Generator	5 kW
8 ft	2,53 x 0,89 x 1,10 m	LED lighting	
Platform rotation	L90° ~ R90°	SAFETY DEVICES	
Transport dims (L x W x H)	8,27 x 2,25 x 2,31 m	Emergency stop	✓
Machine weight	9.610 kg	Foot switch / Enabling switch	✓
AC outlet to platform (230 V)		Auxiliary lowering control	✓
TRAVEL		Overload sensing system	✓
Max. travel speed	2,7 km/h	Battery isolator switch	✓
Max. ground pressure	117 kPa		
Travel position ground pressure	46,67 kPa		
Max. gradeability	57%		



For all our types:



March 2025. Unless otherwise specified, all information in this brochure refers to a standard equipment, and it is intended as general information only. No liability is assumed. Errors reserved. Product specifications and prices are subject to changes without notice. The photographs and/or drawings in this brochure are for illustrative purposes only. For correct and safe operation, the original operating manual and lifting capacity charts are essential. Failure to follow the corresponding Operator's Manual when using our equipment or failure to otherwise act responsibly may result in property damage, serious injury or death. The sole warranty applicable with respect to our equipment is the standard warranty as per general terms and conditions of sales and service (ask your local Tadano dealer for details), and Tadano makes no other warranty, express or implied. All rights reserved. Any use of the trademarks, logos, brand names and model names used herein is prohibited.

© Tadano Ltd. 2025

Tadano Ltd.

Kanda Square 18th Floor, 2-2-1 Kanda-Nishikicho, Chiyoda-ku, Tokyo 101-0054, Japan
Phone: +81-3-6811-7309 (International Division)

info@tadano.com

www.tadano.com

Tadano Europe Holdings GmbH

Dinglerstr. 24, 66482 Zweibrücken, Germany, Phone: +49 (0) 6332 83-0

