



35 Ton Capacity (31.75 Metric Tons)

PROVISIONAL SPECIFICATION

0015-3-MT

TM-35100 (35 ton) crane specifications (PROVISIONAL)

MAXIMUM LIFTING CAPACITY

70,000 lbs at 6 feet

BOOM

4-section full power synchronized telescoping boom of round box construction.

The synchronization system consists of a telescopic cylinder, extension and retraction cables.

Retracted length	30.8' (9.365 m)
Extended length	100' (30.5 m)
Extend speed	69.2' / 72 s
Elevation	By a double action hydraulic cylinder with holding valves
Elevation angle	-8° to 80°
Boom point	4 sheaves

JIB

Base lattice and top box construction two stage jib, stowed on base boom section.

Retracted length	28'
Extended length	50'
Jib offset angle	5°, 25° and 45°

WINCH

Hydraulic axial piston motor through winch speed reducer.

Equipped with automatic brake (neutral brake), counterbalance valves, cable follower and drum rotation indicator.

Single line pull	12,600 lbs (5,710 kg) at maximum permissible line pull
Single line speed	459 FPM (140 m/min) maximum line speed
Drum capacity	720' (219.5 m) 6 layers
Wire rope strength	427' of 5/8" diameter (130 m of 16 mm)

*Maximum permissible line pull may be affected by wire rope strength.

Hook block	Swivel hook with safety latch for single line use
	4 ton (3.63 metric ton) capacity (STANDARD)

SWING

Hydraulic axial piston motor driven through planetary speed reducer.

Equipped with manually locked/released swing brake.

Continuous 360 degree full circle swing on ball bearing turntable.

Swing speed	2.8 RPM
Twin swing system	Free swing or lock swing by selector switch in crane cab

OUTRIGGERS

Four hydraulic, three-section beam and jack outriggers. Vertical jack cylinders equipped with internal holding valves.

Outrigger extension length detectors are equipped.

Each outrigger beam and jack is controlled independently from either side of truck.

Three extension lengths are provided with corresponding "RATED LIFTING CAPACITIES" for crane duty in confined area.

Extend width (Center to center)	Min.	7'2-5/8" (2.2 m)	*React to within 8' (2.44 m) overall width.
	Mid.	12'2-1/8" (5.54 m)	
	Max.	23'7-1/2" (7.2 m)	

Float size (Diameter) 12" (0.61 m)

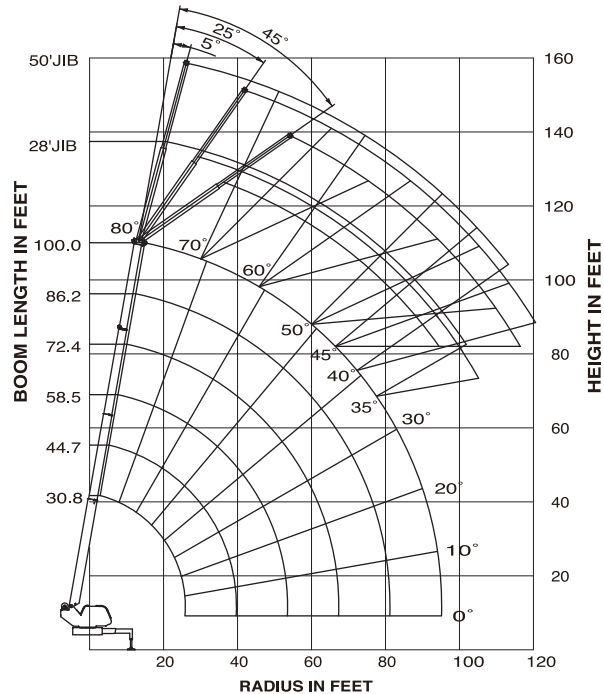
Single front stabilizer

Mounted to the front frame of truck. Hydraulic cylinder equipped with integral holding valve and steel float.

Float size (Diameter) 10-1/4" (0.26 m)

TM-35100 (35 ton) crane capacity

WORKING RANGE



NOTE: Boom and jib geometry shown are for unloaded condition and machine standing level on firm supporting surface. Boom deflection and subsequent radius and boom angle change must be accounted for when applying load to hook.

TM-35100 Provisional Load Chart

(Pounds)

Boom Length Radius (ft)	30.8ft	44.7ft	58.5ft	72.4ft	86.2ft	100ft
6	70,000					
8	61,000					
10	53,500	32,000				
12	48,000	32,000	27,000			
15	41,000	32,000	27,000	22,000		
20	30,000	30,000	27,000	22,000	17,000	15,400
25		23,000	23,000	22,000	17,000	15,400
30		17,000	17,500	17,500	17,000	15,400
35		13,500	13,500	14,000	14,000	13,500
40			11,000	11,000	11,100	11,500
45			9,000	9,200	9,200	9,500
50			7,500	7,700	7,700	8,000
55				6,500	6,500	6,700
60				5,500	5,500	5,500
65					4,600	4,600
70					4,000	4,000
75					3,500	3,500
80						3,000
85						2,500
90						2,000
95						1,500
∠ 0°	15,000	10,000	5,000	3,000	2,000	

(Pounds)

Jib angle Boom Angle	5°	25°	45°	5°	25°	45°
	28ft Jib			50ft Jib		
83°	7,700	4,000	2,750	4,250	1,900	1,250
76°	6,900	3,600	2,600	3,400	1,700	1,200
72°	5,850	3,350	2,500	2,850	1,550	1,150
70°	5,400	3,200	2,450	2,600	1,500	1,150
65°	4,600	2,950	2,350	2,200	1,400	1,100
60°	4,000	2,750	2,300	1,900	1,250	1,050
55°	3,550	2,550	2,025	1,650	1,200	1,000
50°	3,000	2,450	2,000	1,500	1,000	700
45°	2,000	2,000	1,500	1,000	700	500
40°	1,500	1000		700	500	
35°	1,000	800				

Notice : The chart is only for reference and should not be used for operation.

Maintain a clearances at least 10 feet between any part of the crane, load line or load and any electrical line carrying up to 50,000 volts.

One foot additional clearance is required for every additional 30,000 volts or less.

TM-35100 (35 ton) crane configurations

CARRIER REQUIREMENTS (PROVISIONAL)

Wheelbase(WB) - Minimum 260 in (6,600 mm)

Cab to Axle/trunnion (CA/CT) - Minimum 190 in (4,820 mm)

After frame (AF) - 110 in (2,800 mm)

Frame Section Modulus (SM) - Minimum 30 in³(492 cm³) per rail (110,000 PSI steel)

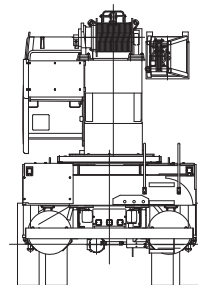
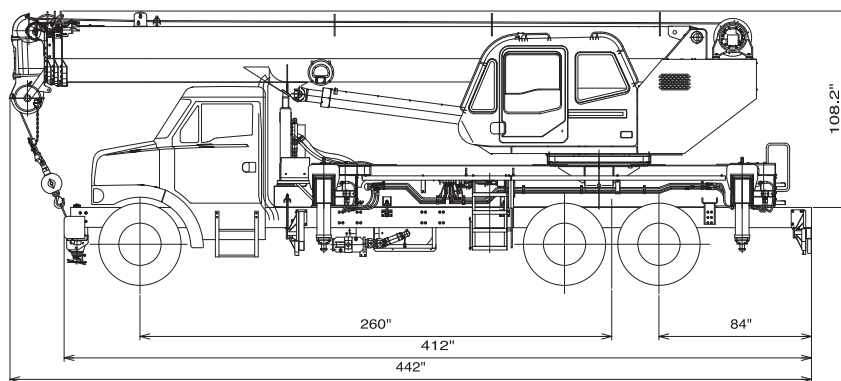
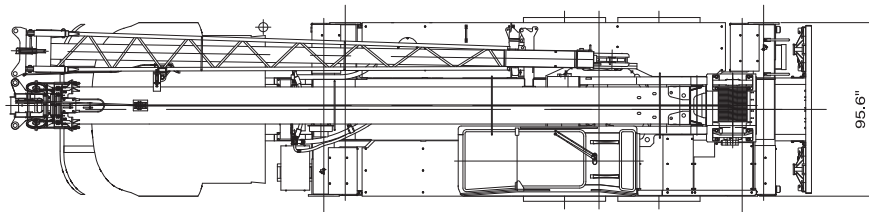
PTO torque - 350 in-lbs (470 N-m)

PTO revolution - Maximum 2,150rpm

Permissible Minimum Axle Load

	Pounds			Kilograms		
	GVW	Front	Rear	GVW	Front	Rear
Permissible axle load	54,000	20,000	34,000	24,400	9,000	15,400

TM-35100 (35 ton) crane dimensional specifications



HYDRAULIC

Control valves	Multiple valves actuated by pilot pressure with integral pressure relief valves.
Hydraulic pump	Two variable piston pumps for crane functions Tandem gear pump for swing and outriggers
Reservoir	94.5 gallon (358 lit.) capacity
Filtration	26 micron return filter, full flow with bypass protection, located inside of hydraulic reservoir.
Oil cooler	Air cooled fan type. (STANDARD)

ELECTRICAL SYSTEM

Power supply	DC12V
--------------	-------

CAB

Left side, 1 person type, steel construction with sliding door access and safety glass windows opening at side.

Door window is powered control. Windshield glass window and roof glass window are shatter-resistant with wiper and washer.

Self centering finger control levers with pilot control.

Adjustable control lever stands for swing, boom elevation, boom telescoping and hoist.

Control lever stands can change neutral positions and tilt for easy access to cab.

Engine throttle knob. 3 way adjustable cloth seat with armrests.

Foot operated controls: boom elevation, boom telescoping and engine throttle.

Hot water cab heater and air conditioning.(STANDARD)

Dash-mounted engine start/stop, monitor lamps, cigarette lighter, front washer and wiper switch, power window switch, swing brake switch, free swing / lock swing selector switch and ashtray.

Correct jib status select switch. Upper console includes roof wiper switch, emergency outrigger set up key switch.

Instruments - Hydraulic oil pressure is monitored and displayed on the AML-L II display panel.

CONTROLS AND SAFETY DEVICE

Tadano electronic LOAD MOMENT INDICATOR system (AML-L II) including:

Control lever lockout function

Load radius / boom angle / tip height / swing range - preset function

Warning buzzer

Boom angle / boom length / jib offset angle / load radius / rated lifting capacities - actual loads read out

Ratio of actual load moment to rated load moment indication

Automatic Speed Reduction and Soft Stop function on boom elevation and swing (swing range restricted only)

Working condition register switch

External warning lamp (OPTIONAL)

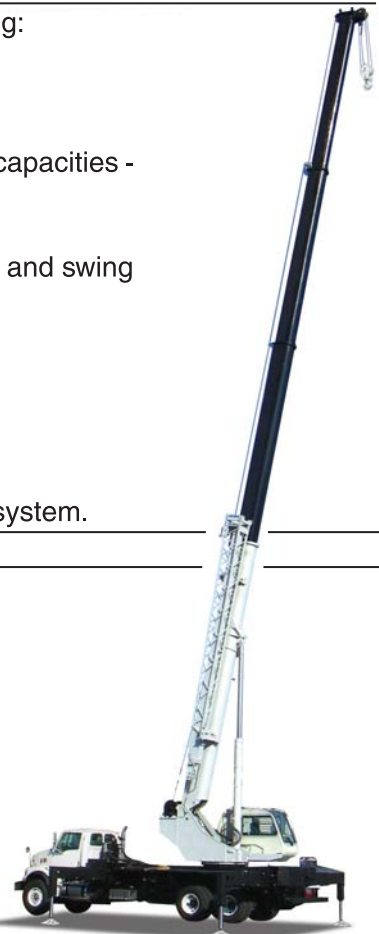
*TADANO AML-L II monitors outrigger extended length and automatically programs the corresponding "RATED LIFTING CAPACITIES" table.

Anti-Two Block

Pendant type over-winding cut out device with audio / visible warning system.

OPTIONS AND ACCESSORIES

- + 35 ton (31.75 metric ton) 4 sheaves hook block
- + 16 ton (14.52 metric ton) 2 sheaves hook block
- + 9 ton (8.16 metric ton) 1 sheave hook block
- + Two person basket with Radio Remote for basket
- + Electric fan



Introducing the TADANO TM-35100 truck mounted crane. This new model TADANO crane is mountable on a number of chassis meeting our recommended specifications. TADANO has over 60 years of experience in manufacturing high quality cranes featuring innovative ideas and leading edge technology. The TADANO TM-35100 is an exciting and strong 35 ton crane which will fit into the most demanding job situations in North America. This crane comes standard with Air Conditioned cab as well as comfort features found only on larger cranes.

With its strong boom and long radius capacities, we believe the TM-35100 is one of our most desirable cranes. TADANO builds a vast range of cranes from 0.5 ton to 600 tons. No matter what you reach or lift requirements are, TADANO can provide you with a great solution. Put one to work for you now. Call today or visit our website for more information.

Features;

Strong Oval Shaped Boom: 100 ft full power synchronized telescoping four section boom.

Light Weight and Offsetable Jib: 5, 25 and 45 degree offsetable 2 stage side stow base lattice jib.

Out & Down Outriggers: complete level ability.

Multiple Outriggers Span: three extension lengths with corresponding "RATED LIFTING CAPACITIES".

Large One Man Crane Cab: with hot water cab heater, air conditioning and power window as standard.

Faster Function Speeds: increase productivity.

Superior Winch Performance: up to 12,600 lbs pull and 459 FPM line speed.

Shear Plate Mounting: more secure "no creep mount".

Large Hydraulic Reservoir: 94.5 gal hydraulic reservoir with 26 micron return filter and oil cooled device.

Complete Load Monitoring: TADANO's exclusive electronic LOAD MOMENT INDICATOR system (AML-II).

Superior Control System: provides Automatic Speed Reduction, Soft Stop function and several Preset function.



Highest Quality Boom Trucks on the Planet



TADANO AMERICA CORPORATION

4242 WEST GREENS ROAD
HOUSTON, TEXAS 77066 U.S.A.

PHONE: (281) 869-0030

FAX: (281) 869-0040

Parts Hotline: (281) 869-0033

Service Hotline: (281) 869-5925

E-mail: sales@tadano-cranes.com

<http://www.tadanoamerica.com>