

# AS-42CJ

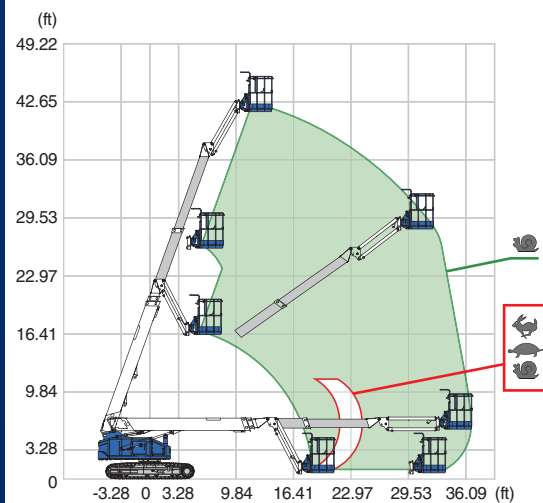
## TELESCOPIC CRAWLER BOOM

### MODEL HIGHLIGHTS

- 360° turntable rotation
- Jib for added job-site access
- Low emission engine
- Low ground pressure
- Steel tracks with non-marking pads



**AS-42CJ Range of motion**

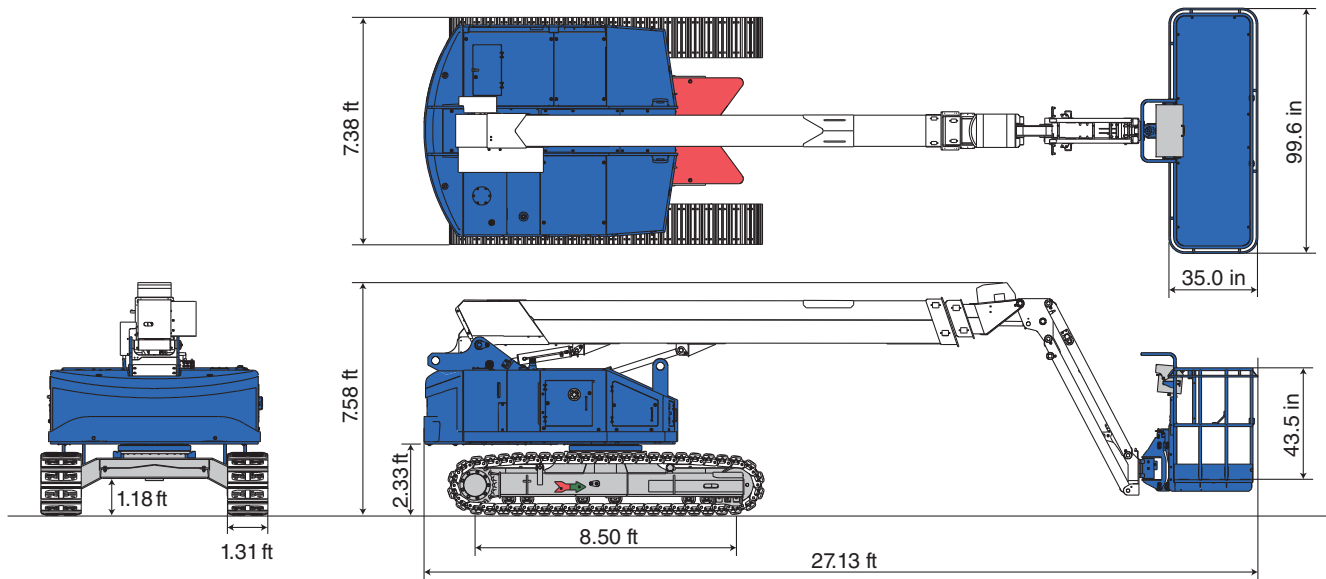


Model	AS-42CJ
Max. platform capacity	550 lb
Platform size	8'3.6" x 2'11" x 3'7.3"
Max. work height	48'
Max. outreach	36'9"

**Allows more workers, with more materials  
and tools, to be more productive!**

**We Know Crawlers!**

Model		AS-42CJ	
SPECIFICATIONS		POWER SOURCE	
Max. work height	48'	Engine type	Kubota D1305
Max. platform height	42'	Rated power	23.5 HP / 2400 min <sup>-1</sup>
Max. outreach	36'9"	Fuel tank capacity	26.4 gal
Allowable tilt	5°		
Max. platform capacity	550 lb	OPTIONS	
Platform size (L x W x H)		6 ft platform	6'4" x 2'11" x 3'7.3"
8 ft	8'3.6" x 2'11" x 3'7.3"	Generator	Available soon
6 ft	6'4" x 2'11" x 3'7.3"	LED lighting	
Platform rotation	180°	SAFETY DEVICES	
Transport dims (L x W x H)	27'1" x 7'5" x 7'7"	Emergency stop	✓
Machine weight	21,190 lb	Foot switch / Enabling switch	✓
AC outlet to platform (120 V)		Auxiliary lowering control	✓
		Traveling restriction (on slope)	✓
		Operation restriction (on slope)	✓
		Overload sensing system	✓
		Battery isolator switch	✓
TRAVEL			
Max. travel speed	1.68 mph		
Travel position ground pressure	6.77 psi		
Max. gradeability	57 %		



#### For all our types:



March 2025. Unless otherwise specified, all information in this brochure refers to a standard equipment, and it is intended as general information only. No liability is assumed. Errors reserved. Product specifications and prices are subject to changes without notice. The photographs and/or drawings in this brochure are for illustrative purposes only. For correct and safe operation, the original operating manual and lifting capacity charts are essential. Failure to follow the corresponding Operator's Manual when using our equipment or failure to otherwise act responsibly may result in property damage, serious injury or death. The sole warranty applicable with respect to our equipment is the standard warranty as per general terms and conditions of sales and service (ask your local Tadano dealer for details), and Tadano makes no other warranty, express or implied. All rights reserved. Any use of the trademarks, logos, brand names and model names used herein is prohibited.

© Tadano Ltd. 2025

#### Tadano Ltd.

Kanda Square 18th Floor, 2-2-1 Kanda-Nishikicho, Chiyoda-ku, Tokyo 101-0054, Japan  
Phone: +81-3-6811-7309 (International Division)

#### Tadano America Corporation

4242 West Greens Road, Houston, TX 77066, Phone: +1 (281) 869-00300 · Fax: +1 (281) 869-0040

tac.sales@tadano.com  
www.tadano.com

