

AS-42C

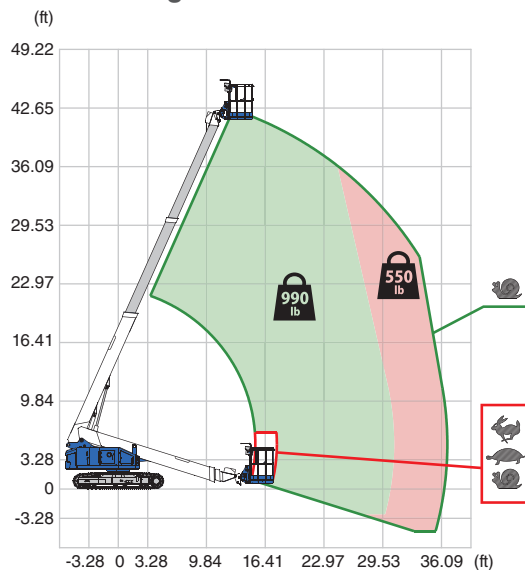
TELESCOPIC CRAWLER BOOM

MODEL HIGHLIGHTS

- 360° turntable rotation
- Dual lifting capacity
- Low emission engine
- Low ground pressure
- Steel tracks with non-marking pads



AS-42C Range of motion



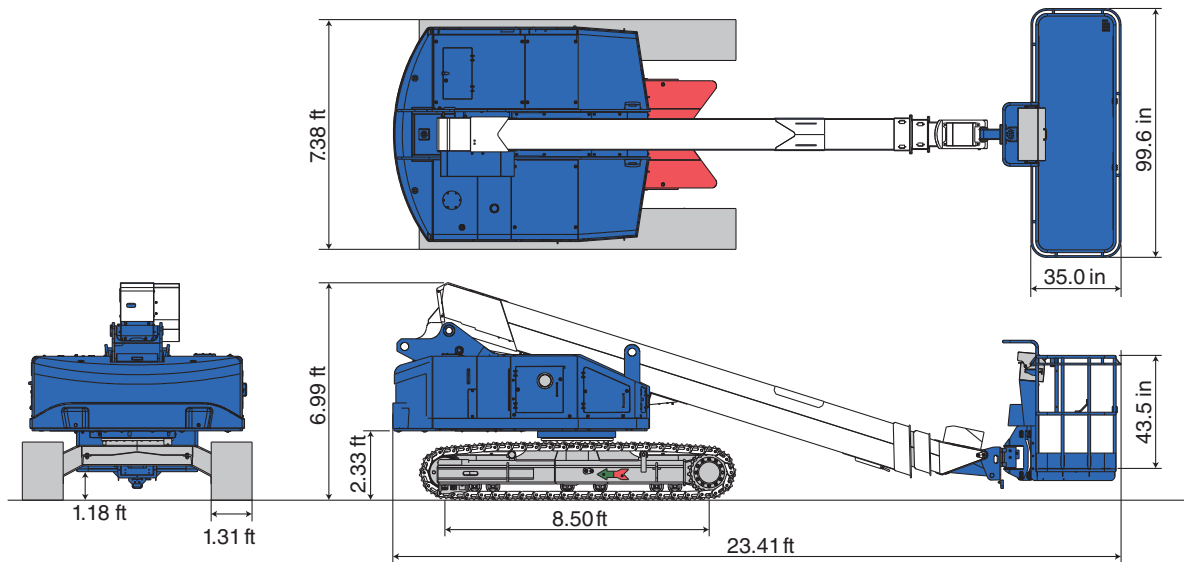
Model	AS-42C
Max. platform capacity	990 lb / 550 lb
Platform size	8'3.6" x 2'11" x 3'7.3"
Max. work height	47'8"
Max. outreach	36'9"

Max. platform capacity	990 lb / 550 lb
Platform size	8'3.6" x 2'11" x 3'7.3"
Max. work height	47'8"
Max. outreach	36'9"

Allows more workers, with more materials and tools, to be more productive!

We Know Crawlers!

Model		AS-42C	
SPECIFICATIONS		POWER SOURCE	
Max. work height	47'8"	Engine type	Kubota D1305
Max. platform height	41'8"	Rated power	23.5 HP / 2400 min ⁻¹
Max. outreach	36'9"	Fuel tank capacity	26.4 gal
Allowable tilt	5°		
Max. platform capacity	990 lb / 550 lb		
Platform size (L x W x H)		OPTIONS	
8 ft	8'3.6" x 2'11" x 3'7.3"	6 ft platform	6'4" x 2'11" x 3'7.3"
6 ft	6'4" x 2'11" x 3'7.3"	Generator	Available soon
Platform rotation	180°	LED lighting	
Transport dims (L x W x H)	23'5" x 7'5" x 7'		
Machine weight	19,975 lb		
AC outlet to platform (120 V)			
TRAVEL			
Max. travel speed	1.68 mph	SAFETY DEVICES	
Travel position ground pressure	6.53 psi	Emergency stop	✓
Max. gradeability	57%	Foot switch / Enabling switch	✓
		Auxiliary lowering control	✓
		Traveling restriction (on slope)	✓
		Operation restriction (on slope)	✓
		Overload sensing system	✓
		Battery isolator switch	✓



For all our types:



March 2025. Unless otherwise specified, all information in this brochure refers to a standard equipment, and it is intended as general information only. No liability is assumed. Errors reserved. Product specifications and prices are subject to changes without notice. The photographs and/or drawings in this brochure are for illustrative purposes only. For correct and safe operation, the original operating manual and lifting capacity charts are essential. Failure to follow the corresponding Operator's Manual when using our equipment or failure to otherwise act responsibly may result in property damage, serious injury or death. The sole warranty applicable with respect to our equipment is the standard warranty as per general terms and conditions of sales and service (ask your local Tadano dealer for details), and Tadano makes no other warranty, express or implied. All rights reserved. Any use of the trademarks, logos, brand names and model names used herein is prohibited.

© Tadano Ltd. 2025

Tadano Ltd.

Kanda Square 18th Floor, 2-2-1 Kanda-Nishikicho, Chiyoda-ku, Tokyo 101-0054, Japan
Phone: +81-3-6811-7309 (International Division)

Tadano America Corporation

4242 West Greens Road, Houston, TX 77066, Phone: +1 (281) 869-00300 · Fax: +1 (281) 869-0040

tac.sales@tadano.com
www.tadano.com

