

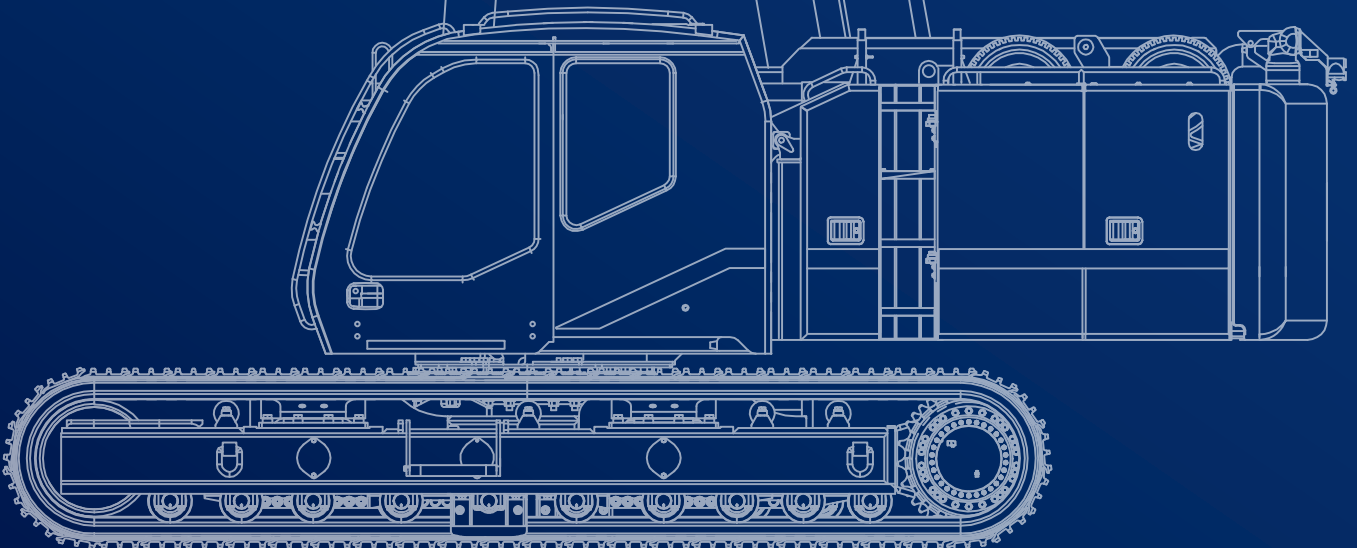
GTC-350

35 US TON MAX. CRANE CAPACITY



*TADANO
GREEN
SOLUTIONS*

- Suitable for alternative fuels





February 2025. Unless otherwise specified, all information in this brochure refers to a standard crane equipment, and it is intended as general information only. No liability is assumed. Errors reserved. Product specifications and prices are subject to changes without notice. The photographs and/or drawings in this brochure are for illustrative purposes only. For correct and safe crane operation, the original operating manual and lifting capacity charts are essential. Failure to follow the corresponding Operator's Manual when using our equipment or failure to otherwise act responsibly may result in property damage, serious injury or death. The sole warranty applicable with respect to our equipment is the standard warranty as per general terms and conditions of sales and service (ask your local Tadano dealer for details), and Tadano makes no other warranty, express or implied. All rights reserved. Any use of the trademarks, logos, brand names and model names used herein is prohibited.

© Tadano Ltd. 2025

Contents

Specifications	7
Vehicle dimensions.....	8-9
General dimensions.....	9
Transportation	11
Transport dimensions.....	12
Machine weights.....	12
Operation	13
Speeds and gradeability.....	14
Main winch and auxiliary winch performance.....	14
Hook blocks.....	14
MB: Main boom.....	16-17
EJ: Extendable jib.....	18-20
WP: Work platform.....	22-23
Notes to Lifting Capacity.....	24
Technical Description	25
Crane specifications.....	26-27
Optional equipment.....	27

Key



	Counterweight		Jib offset angle
	Radius		Max. line pull
	Main boom		Rope length
	Extendable jib		Rope
	Carbody counterweight		Hook block
	Overall width		Number of lines
	Roll / list angle		Assembly weight
	Total weight		Transport variant
	Hook block		Wire rope layer
	Overhaul ball		Total wire rope
	Travel speed		Winch layer diameter
	Gradeability		Wind speed in mph
	Working speeds		

Highlights



89.2' full power boom; 23.6' to 42' jib

Lifting capacities up to 4° out of level with full pick and carry

Jib capacities to 0.5° out of level

Dual hook operation with auxiliary nose sheave or jib

Powerful winches with 16 mm diameter rope

Tethered remote control for all rigging operations standard

Full crane operation remote optional

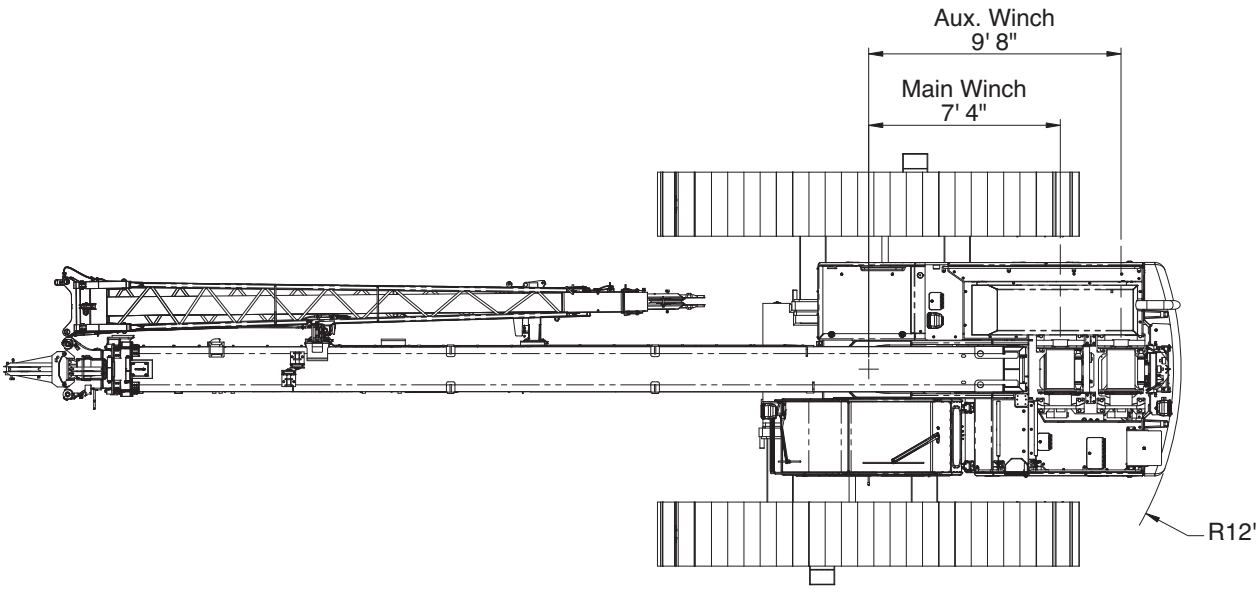
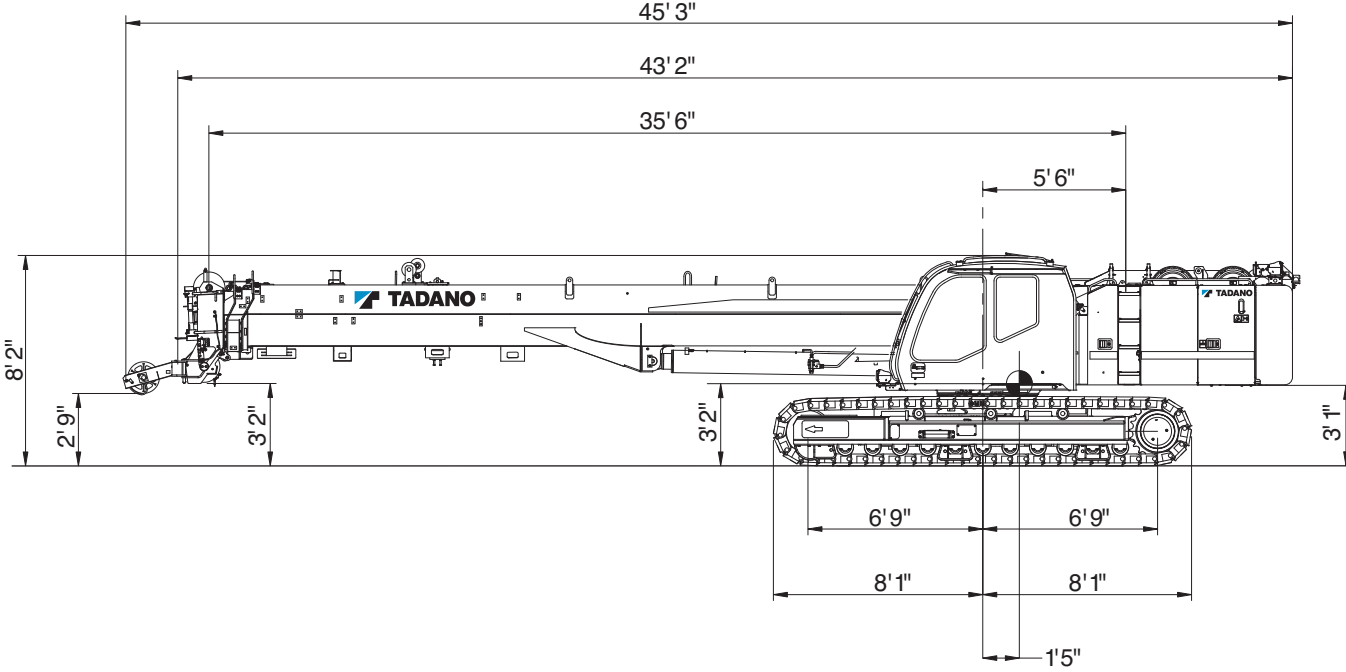
Best in class gradeability at 74 %

SPECIFICATIONS



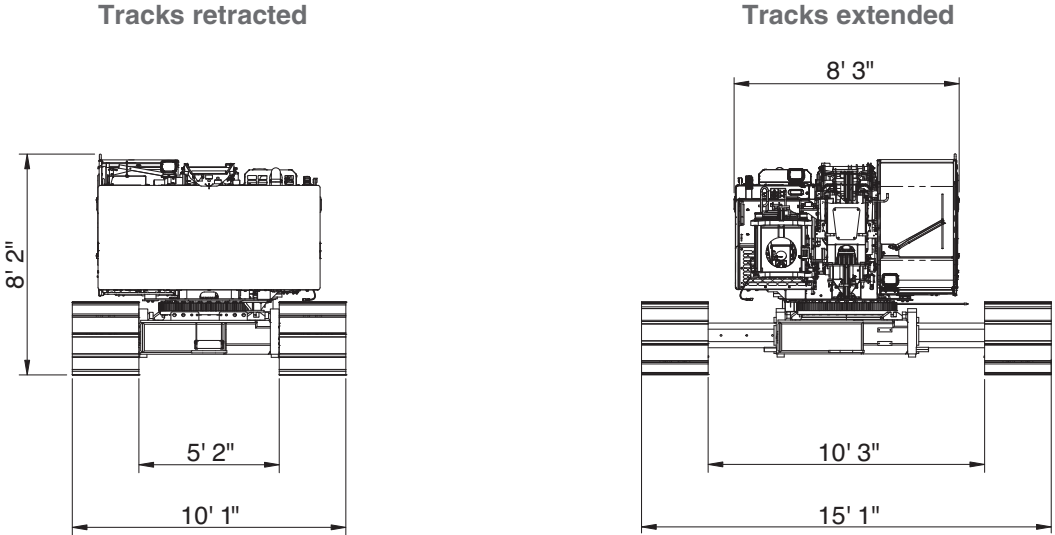
Specifications

Vehicle dimensions



Specifications

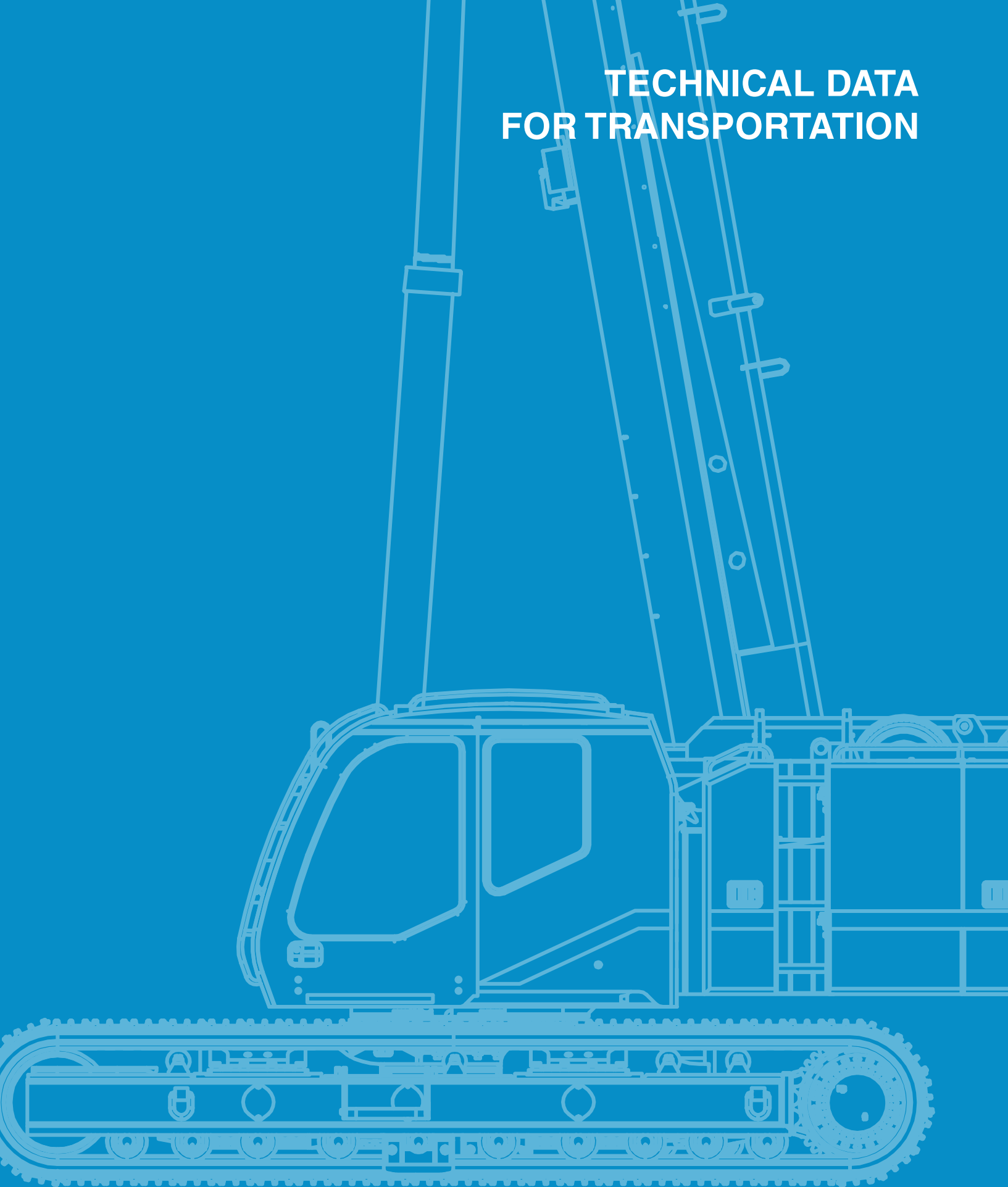
Vehicle dimensions



General dimensions

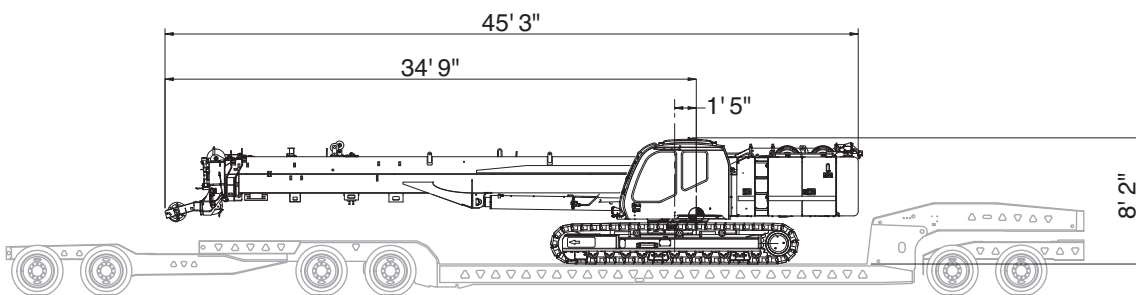
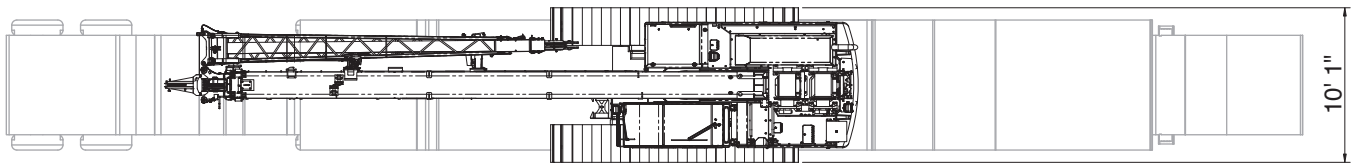
Overall length	45' 3"
Overall width (tracks extended)	15' 1"
Overall width (tracks retracted)	10' 1"
Overall height (working)	8' 2"

TECHNICAL DATA FOR TRANSPORTATION

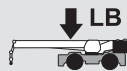


Transportation

Transport dimensions



Machine weights



Standard equipment package

71,500 lb



Fixed

12,500 lb

Standard Crane

with 3 section – 89' 3" boom, 12,500 lb counterweight, 1 winch with wire rope, bi-fold jib and 29.5 inch 3-bar semi grouser track shoes

71,500 lb

Optional Equipment

Extendable jib: 23' 6" to 42'

1,390 lb

Auxiliary nose sheave

98 lb

Auxiliary winch with 300' wire rope

1,149 lb



35 ton



4

779 lb



4.4 ton

250 lb

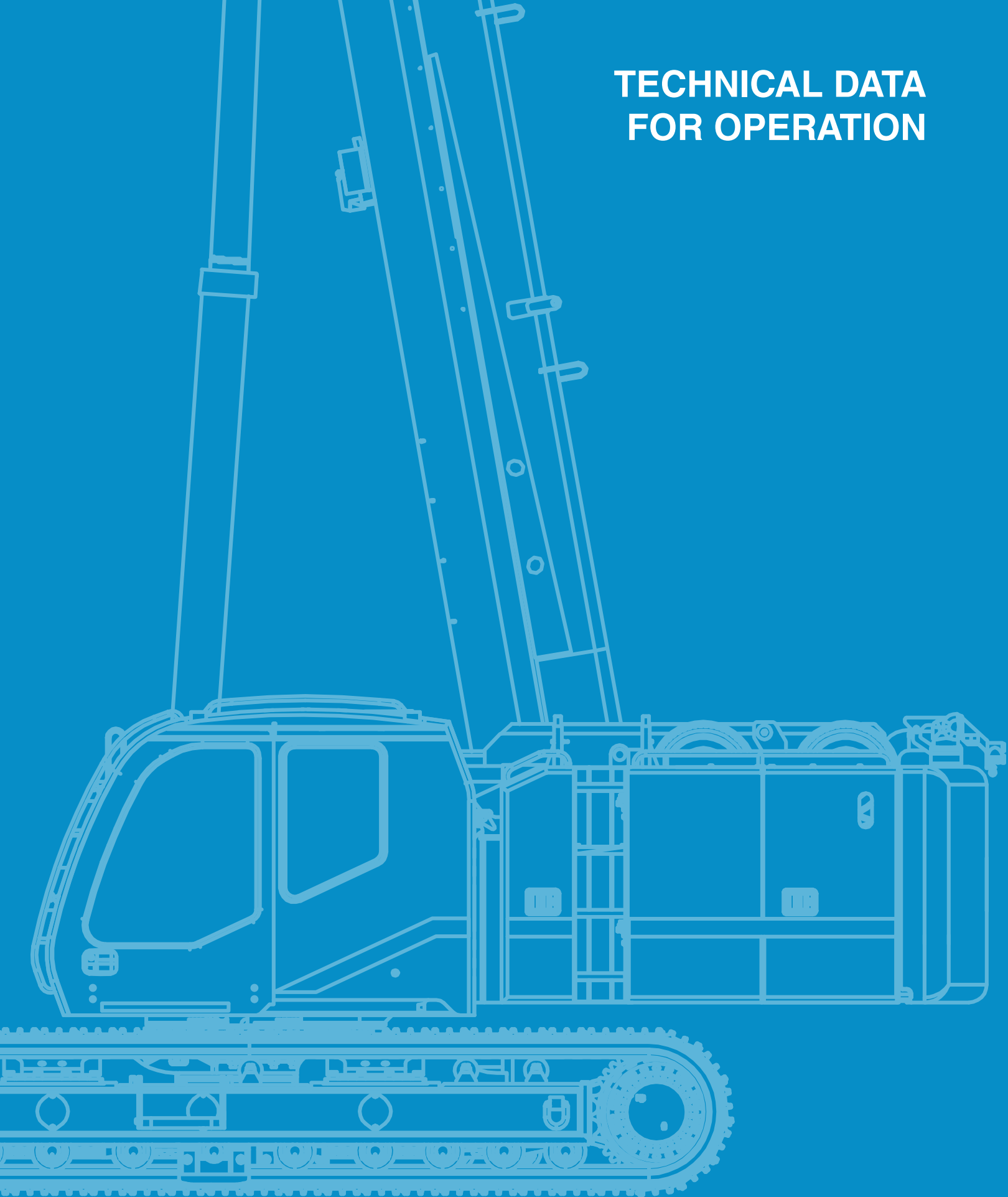
Auger ready package

440 lb

Complete auger package

1,500 lb

TECHNICAL DATA FOR OPERATION

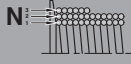


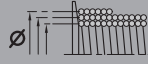
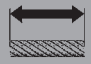
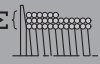


Operation

Speeds and gradeability





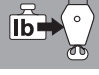
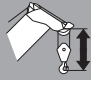
	1.4 mph / 2.4 mph		74 %
---	-------------------	---	------

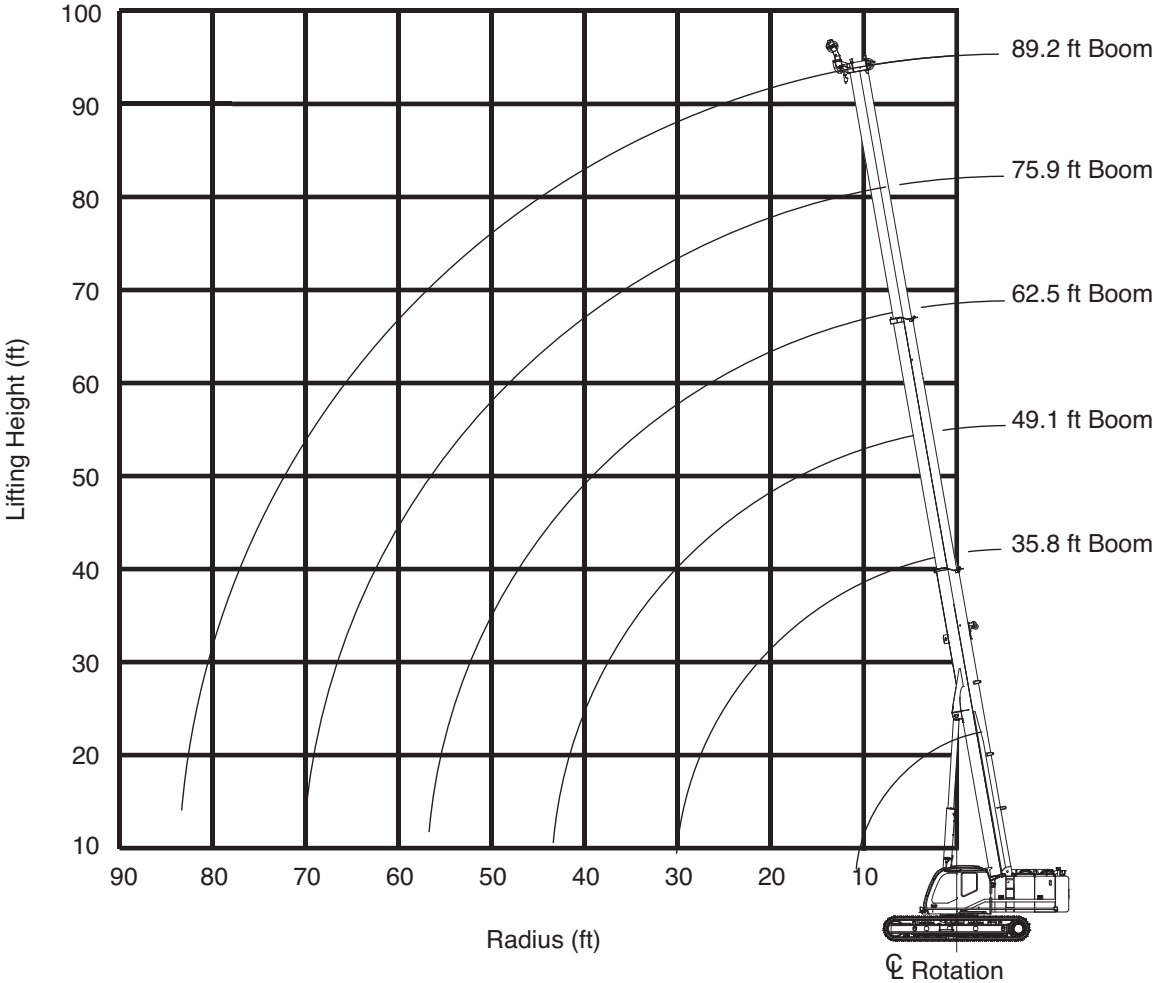
Main winch and auxiliary winch performance

					
1	13,310.9 lb	203.7 ft/min.	13.3 in.	98.8 ft	98.8 ft
2	12,252.1 lb	221.1 ft/min.	14.6 in.	107.6 ft	206.4 ft
3	11,375.3 lb	238.5 ft/min.	15.9 in.	115.8 ft	322.2 ft
4	10,588.5 lb	256.2 ft/min.	17.2 in.	124.0 ft	446.2 ft
5	9,914.1 lb	273.6 ft/min.	18.5 in.	132.9 ft	579.1 ft
6	9,329.6 lb	291.0 ft/min.	19.8 in.	141.0 ft	720.1 ft

Wire Rope: 16 mm diameter rotation resistant. Line pulls are not based on wire rope strength.

Hook blocks

					
1	11,275	4-0-16	4	775	7.6 ft
2	22,608	35-4-16	4	912	10.0 ft
3	33,165	35-4-16	4	912	10.0 ft
4	47,977	35-4-16	4	912	10.0 ft
5	59,390	35-4-16	4	912	10.0 ft
6	70,000	35-4-16	4	912	10.0 ft
7	70,000	35-4-16	4	912	10.0 ft
8	70,000	35-4-16	4	912	10.8 ft

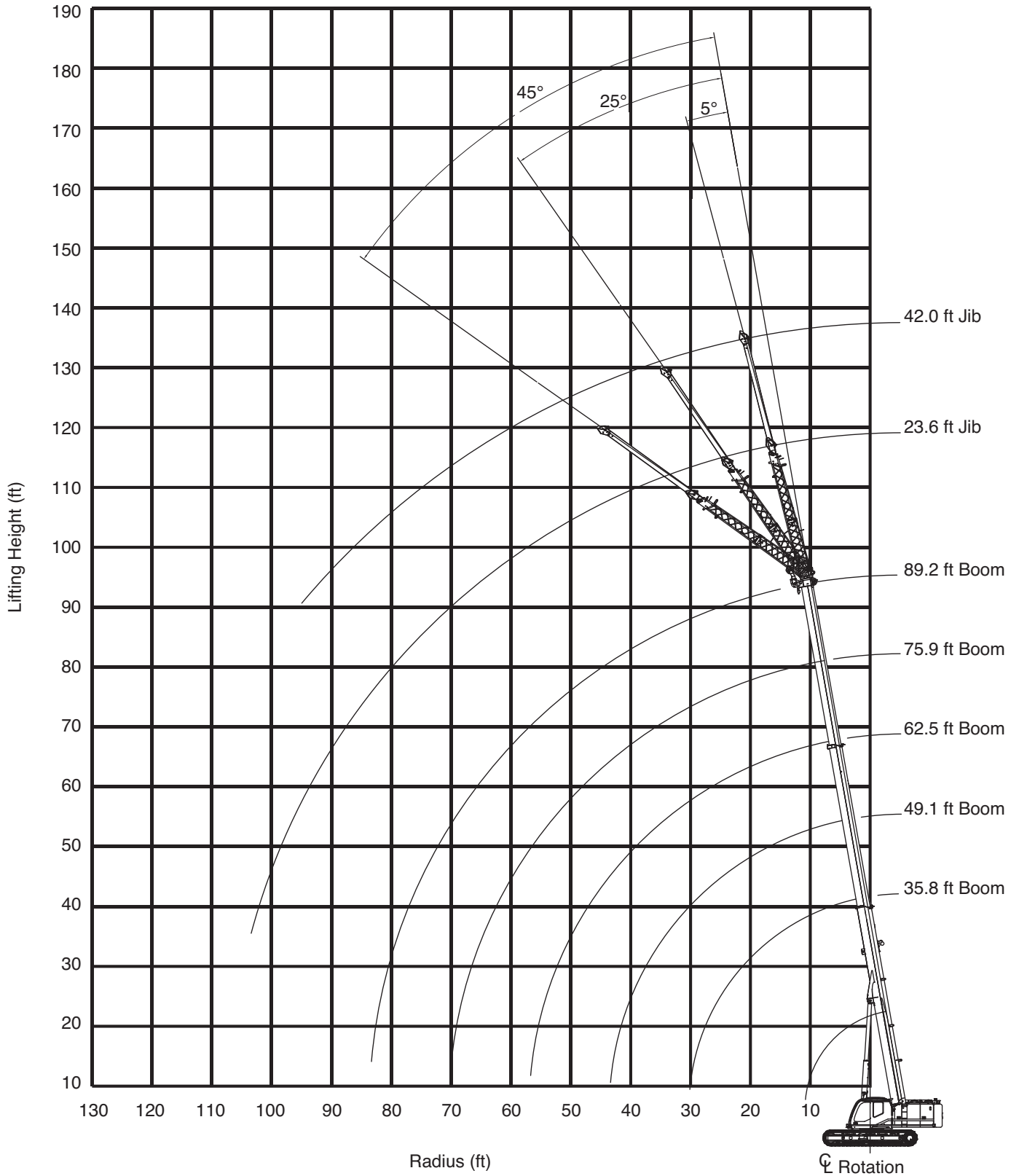


Operation

12,500 lb		15'9"				20 mph				360°				ASME B30.5
		35.8 ft				49.1 ft				62.5 ft				
		0.5°	1.5°	2.5°	4°	0.5°	1.5°	2.5°	4°	0.5°	1.5°	2.5°	4°	
ft	1,000 lb													ft
8	70.5	70.5	70.5	64.2	48.8	48.8	48.8	44.1	48.8	48.8	48.5	36.0	8	
10	70.5	70.5	70.5	62.6	48.7	48.7	48.7	44.1	48.7	48.7	46.6	36.0	10	
12	70.5	68.9	61.8	51.3	48.7	48.7	48.7	44.1	46.9	46.9	44.7	36.0	12	
15	49.9	46.0	42.6	38.3	48.7	44.5	40.2	34.9	46.5	42.8	37.9	32.1	15	
20	30.3	28.8	27.4	25.5	30.4	28.3	26.3	23.9	30.2	27.6	25.3	22.4	20	
25	21.3	20.6	19.9	18.9	21.4	20.3	19.2	17.8	21.4	19.9	18.6	16.9	25	
30	16.1	15.9	15.6	15.2	16.2	15.5	14.9	14.0	16.2	15.3	14.5	13.3	30	
35	-	-	-	-	12.8	12.4	12.0	11.4	12.8	12.2	11.7	10.9	35	
40	-	-	-	-	10.4	10.2	9.9	9.6	10.4	10.0	9.6	9.1	40	
45	-	-	-	-	-	-	-	-	8.7	8.4	8.1	7.7	45	
50	-	-	-	-	-	-	-	-	7.3	7.1	6.9	6.6	50	
55	-	-	-	-	-	-	-	-	6.3	6.2	6.0	5.9	55	

		75.9 ft				89.2 ft				
		0.5°	1.5°	2.5°	4°	0.5°	1.5°	2.5°	4°	
ft	1,000 lb									ft
12	34.2	33.2	31.0	24.7	-	-	-	-	-	12
15	33.2	31.1	29.3	24.7	23.8	23.7	22.6	20.4	-	15
20	28.4	27.0	24.4	21.2	23.5	22.2	20.9	19.3	-	20
25	21.4	19.6	18.1	16.1	20.1	19.1	17.5	15.4	-	25
30	16.3	15.2	14.2	12.9	16.2	14.9	13.8	12.3	-	30
35	12.9	12.1	11.4	10.5	12.8	11.9	11.2	10.1	-	35
40	10.5	10.0	9.5	8.8	10.5	9.8	9.2	8.4	-	40
45	8.8	8.4	8.0	7.4	8.7	8.2	7.8	7.2	-	45
50	7.4	7.1	6.8	6.4	7.4	7.0	6.6	6.2	-	50
55	6.3	6.1	5.9	5.5	6.3	6.0	5.7	5.3	-	55
60	5.4	5.3	5.1	4.9	5.4	5.2	5.0	4.6	-	60
65	4.7	4.6	4.5	4.3	4.7	4.5	4.3	4.1	-	65
70	4.1	4.1	4.0	3.9	4.1	3.9	3.8	3.6	-	70
75	-	-	-	-	3.6	3.5	3.4	3.2	-	75
80	-	-	-	-	3.2	3.1	3.0	2.9	-	80

Operation



Operation



Tracks fully extended – 360° – Up to 0.5° slope – Extendable jib

12,500 lb		15' 9"			0.5°			23.6 ft			20 mph			360°			ASME B30.5		
35.8 ft		49.1 ft			62.5 ft			75.9 ft			89.2 ft								
5°		25°		45°		5°		25°		45°		5°		25°		45°			
ft	1,000 lb															ft			
8	11.1	-	-	-	-	-	-	-	-	-	-	-	-	-	-	-	-	8	
10	11.1	-	-	11.1	-	-	-	-	-	-	-	-	-	-	-	-	-	10	
12	11.1	-	-	11.1	-	-	11.1	-	-	-	-	-	-	-	-	-	-	12	
15	11.1	7.3	-	11.1	-	-	11.1	-	-	11.1	-	-	-	-	-	-	-	15	
20	9.6	6.4	-	10.7	6.7	-	11.1	6.7	-	10.8	-	-	10.2	-	-	-	-	20	
25	8.0	5.7	4.4	9.1	6.0	4.5	9.6	6.1	4.4	9.4	6.0	-	9.0	5.8	-	-	-	25	
30	6.9	5.1	4.1	7.9	5.5	4.2	8.4	5.6	4.2	8.4	5.5	4.1	8.0	5.3	-	-	-	30	
35	6.1	4.7	3.8	7.0	5.0	4.0	7.5	5.2	4.0	7.5	5.1	3.9	7.2	5.0	3.8	-	-	35	
40	5.4	4.3	3.7	6.3	4.7	3.8	6.8	4.8	3.8	6.9	4.8	3.7	6.6	4.7	3.6	-	-	40	
45	4.9	4.1	-	5.7	4.4	3.7	6.2	4.5	3.7	6.3	4.5	3.6	6.1	4.4	3.5	-	-	45	
50	4.5	3.9	-	5.2	4.1	3.6	5.7	4.3	3.5	5.8	4.3	3.5	5.7	4.2	3.4	-	-	50	
55	-	-	-	4.8	4.0	-	5.3	4.1	3.5	5.4	4.1	3.4	5.3	4.0	3.2	-	-	55	
60	-	-	-	4.5	3.9	-	4.9	3.9	3.4	5.1	3.9	3.3	5.0	3.8	3.2	-	-	60	
65	-	-	-	4.3	-	-	4.7	3.8	-	4.6	3.8	3.2	4.5	3.7	3.1	-	-	65	
70	-	-	-	-	-	-	4.1	3.7	-	4.0	3.7	3.2	3.9	3.5	3.0	-	-	70	
75	-	-	-	-	-	-	3.6	3.7	-	3.4	3.6	-	3.3	3.4	3.0	-	-	75	
80	-	-	-	-	-	-	3.1	-	-	3.0	3.1	-	2.8	3.0	3.0	-	-	80	
85	-	-	-	-	-	-	-	-	-	2.6	2.6	-	2.4	2.6	2.6	-	-	85	
90	-	-	-	-	-	-	-	-	-	2.2	-	-	2.1	2.2	-	-	-	90	
95	-	-	-	-	-	-	-	-	-	-	-	-	1.8	1.9	-	-	-	95	
100	-	-	-	-	-	-	-	-	-	-	-	-	1.5	1.5	-	-	-	100	
105	-	-	-	-	-	-	-	-	-	-	-	-	1.2	-	-	-	-	105	
	1	1	1	1	1	1	1	1	1	1	1	1	1	1	1	1	1		

Load chart data is for reference, load charts supplied in the crane cab shall be used for lift planning.

Operation

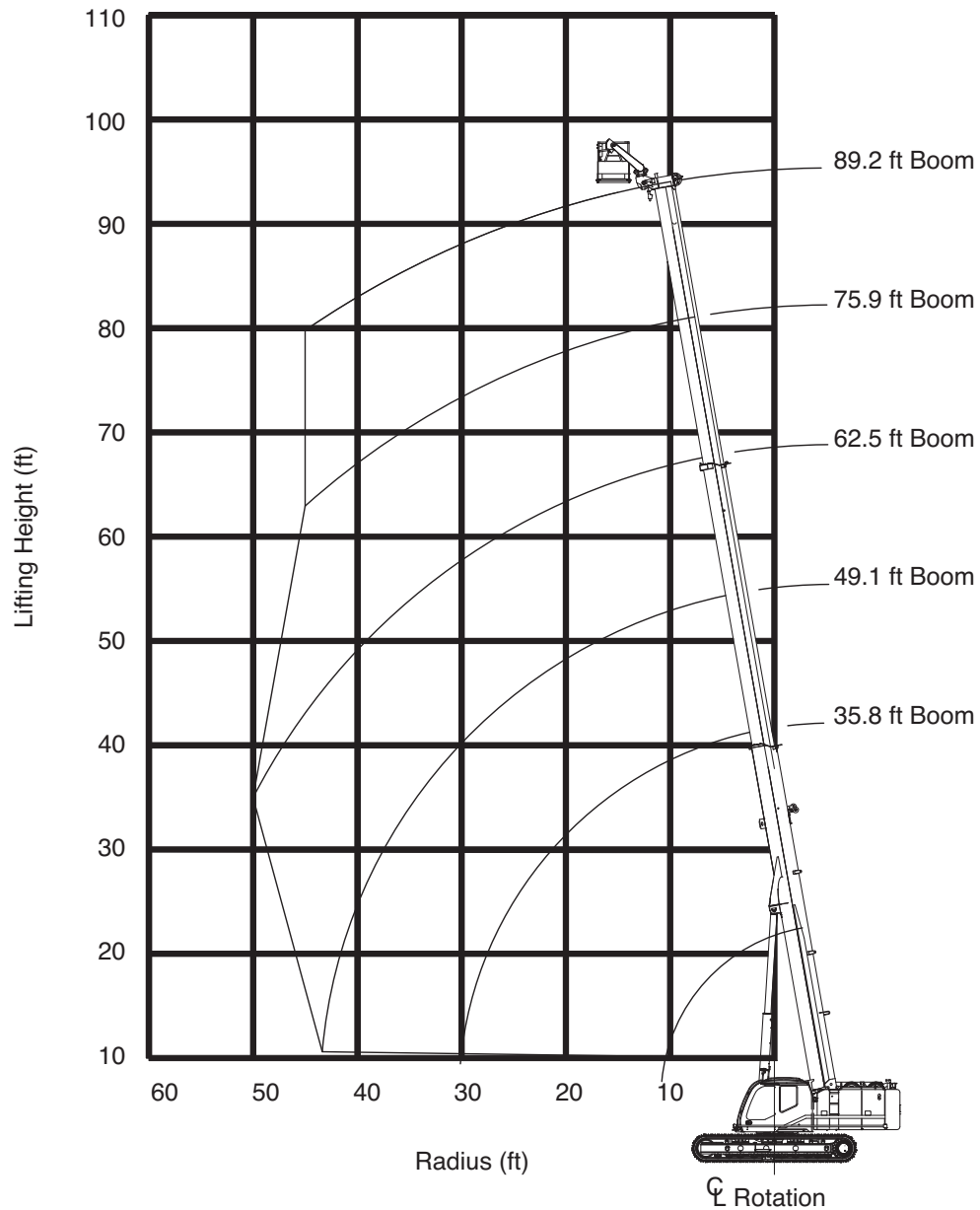


Tracks fully extended – 360° – Up to 0.5° slope – Extendable jib

12,500 lb			15' 9"			0.5°			42.0 ft			20 mph			360°			ASME B30.5		
35.8 ft			49.1 ft			62.5 ft			75.9 ft			89.2 ft								
5°			25°			45°			5°			25°			45°					
ft			1,000 lb			ft			ft			ft			ft			ft		
12	6.1	-	-	-	-	-	-	-	-	-	-	-	-	-	-	-	-	-	-	12
15	5.2	-	-	5.6	-	-	-	-	-	-	-	-	-	-	-	-	-	-	-	15
20	4.2	-	-	4.7	-	-	5.0	-	-	4.7	-	-	-	-	-	-	-	-	-	20
25	3.5	2.6	-	3.9	-	-	4.3	-	-	4.5	-	-	4.1	-	-	-	-	-	-	25
30	3.0	2.3	-	3.4	2.4	-	3.7	2.4	-	3.9	-	-	4.0	-	-	-	-	-	-	30
35	2.7	2.1	-	3.0	2.2	-	3.3	2.3	-	3.5	2.3	-	3.7	-	-	-	-	-	-	35
40	2.4	1.9	1.6	2.7	2.0	1.7	3.0	2.1	-	3.2	2.2	-	3.4	2.2	-	3.4	2.2	-	-	40
45	2.1	1.8	1.5	2.4	1.9	1.6	2.7	2.0	1.6	2.9	2.0	1.6	3.1	2.1	-	3.1	2.1	-	-	45
50	1.9	1.7	1.5	2.2	1.8	1.5	2.4	1.9	1.5	2.6	1.9	1.6	2.8	2.0	1.6	2.8	2.0	1.6	-	50
55	1.8	1.5	1.4	2.0	1.7	1.5	2.2	1.7	1.5	2.4	1.8	1.5	2.6	1.9	1.5	2.6	1.9	1.5	-	55
60	1.6	1.5	1.4	1.9	1.6	1.4	2.1	1.7	1.5	2.3	1.7	1.5	2.4	1.8	1.5	2.4	1.8	1.5	-	60
65	1.5	1.4	-	1.7	1.5	1.4	1.9	1.6	1.4	2.1	1.7	1.4	2.3	1.7	1.4	2.3	1.7	1.4	-	65
70	1.4	1.4	-	1.6	1.4	1.4	1.8	1.5	1.4	2.0	1.6	1.4	2.1	1.6	1.4	2.1	1.6	1.4	-	70
75	-	-	-	1.5	1.4	-	1.7	1.5	1.4	1.9	1.5	1.4	2.0	1.6	1.4	2.0	1.6	1.4	-	75
80	-	-	-	1.5	1.4	-	1.6	1.4	1.3	1.8	1.5	1.3	1.9	1.5	1.3	1.9	1.5	1.3	-	80
85	-	-	-	1.4	-	-	1.5	1.4	-	1.7	1.4	1.3	1.8	1.5	1.3	1.8	1.5	1.3	-	85
90	-	-	-	-	-	-	1.5	1.3	-	1.6	1.4	1.3	1.7	1.4	1.3	1.7	1.4	1.3	-	90
95	-	-	-	-	-	-	1.4	-	-	1.5	1.3	-	1.7	1.4	1.3	1.7	1.4	1.3	-	95
100	-	-	-	-	-	-	-	-	-	1.5	1.3	-	1.6	1.3	1.3	1.6	1.3	1.3	-	100
105	-	-	-	-	-	-	-	-	-	1.4	1.3	-	1.5	1.3	-	1.5	1.3	-	-	105
110	-	-	-	-	-	-	-	-	-	1.4	-	-	1.5	1.3	-	1.5	1.3	-	-	110
115	-	-	-	-	-	-	-	-	-	-	-	-	1.3	1.3	-	1.3	1.3	-	-	115
120	-	-	-	-	-	-	-	-	-	-	-	-	1.1	1.1	-	1.1	1.1	-	-	120
125	-	-	-	-	-	-	-	-	-	-	-	-	0.9	-	-	0.9	-	-	-	125
	1	1	1	1	1	1	1	1	1	1	1	1	1	1	1	1	1	1		

Load chart data is for reference, load charts supplied in the crane cab shall be used for lift planning.

WP750 Work platform



Shaded area is allowable operating range!

Limits of operation:

Max. load capacity = 750 lb · Max. radius when mounted on main boom = 50 ft · Max. occupancy = 2 persons

Notes:

1. It is permissible to leave the jibs stowed on the boom while operating with work platform mounted to the main boom.
2. The hook block(s) must be removed when using the work platform.

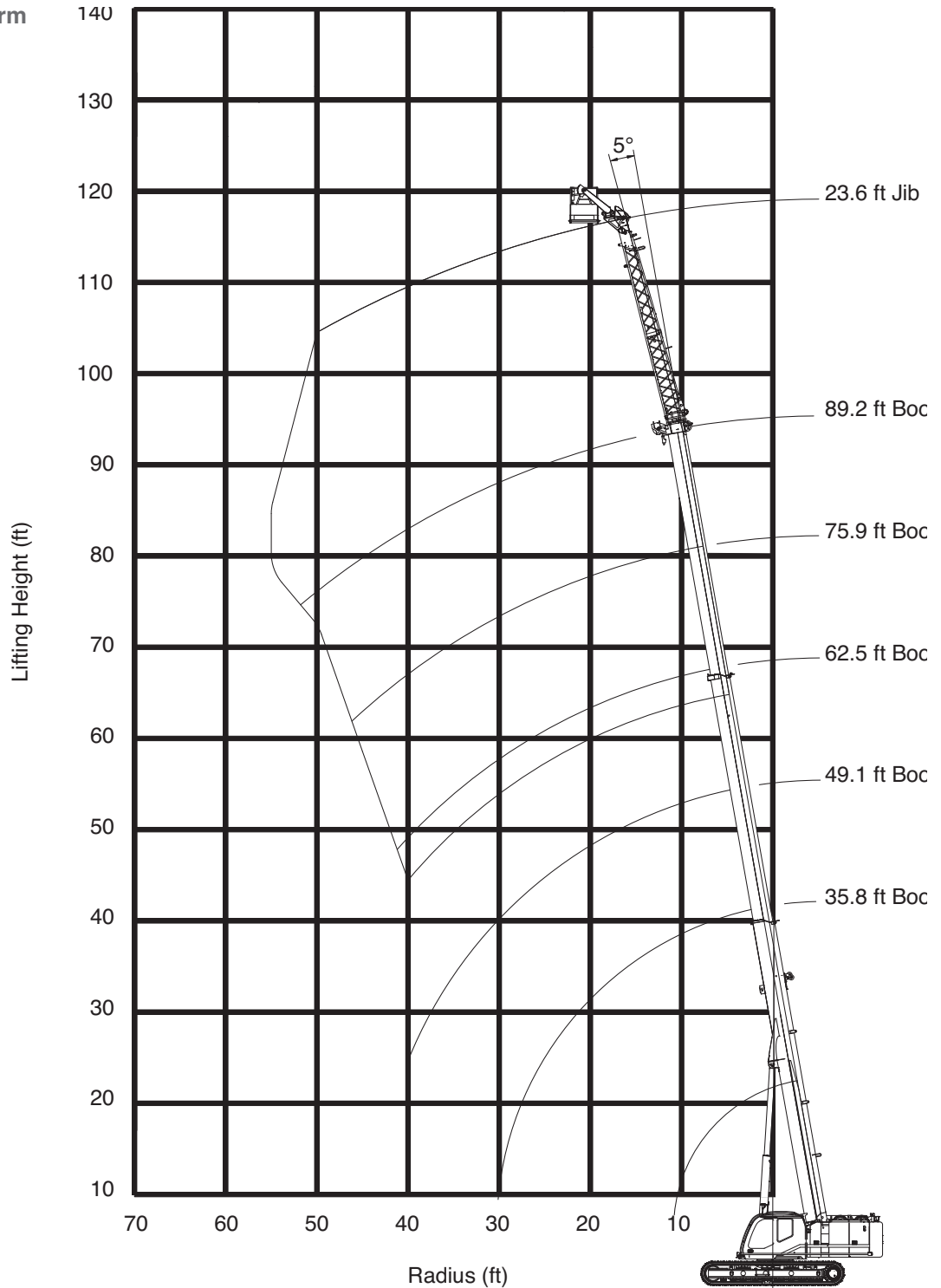
WARNING: Lifting a load during work platform operation is *not* allowed.

WARNING: Travelling the crane with person(s) in the work platform is *not* allowed.

Operation

WP

WP750 Work platform



Shaded area is allowable operating range!

Limits of operation:

Maximum load capacity = 750 lb under "Limits of operation" · Max. occupancy = 2 persons

Notes:

1. The hook block(s) must be removed when using the work platform.

WARNING: Lifting a load during work platform operation is *not* allowed.

WARNING: Travelling the crane with person(s) in the work platform is *not* allowed.

Notes to Lifting Capacity

Definitions and Explanations

- Load capacity values in these charts are stated in lb x 1000.
- All ratings are for 360° of rotation unless otherwise specified on the chart.
- Load radius is defined as the horizontal distance from the axis of rotation (with no load) to the center of the lifting device after load is applied in feet (ft).
- Boom height dimensions are measured from ground to center of lower boom head sheave in feet (ft).
- Boom angle / boom length relationships given are an approximation of the resulting load radius, which should be an accurate measurement.
- Boom angle is the included angle between the longitudinal axis of the boom base section and the horizontal axis, after lifting load. The boom angle before lifting should be slightly greater than desired to account for boom deflection.
- Boom positions without rated loads in the charts are prohibited. These areas are indicated by an “*” and are susceptible to instability either in the forward direction or the backwards direction.
- It is acceptable to telescope boom with a load within the limits of rated capacities. However, boom angle, system hydraulic pressure, and/or boom lubrication may affect operation.
- Deduct the weight of the hook block, hook/ball, slings, spreader bar, or other suspended equipment from the listed rated capacities. This includes lifting accessories stowed on the boom such as jib, extension, and auger.
- Unless otherwise noted, travelling in low speed is allowed for all rated loads- reduce travel speed to minimize dynamic effects on the crane from swinging load, side loading, etc.
- This crane as originally manufactured meets the requirements of ASME B30.5 2014. Structure and stability have been tested in accordance with SAE J1063 and SAE J765.

Note

Data published herein is intended as a guide only and shall not be construed to warrant applicability for lifting purposes. Crane operation is subject to the computer charts and operation manual both supplied with the crane.

TECHNICAL DESCRIPTION



Technical Description

Crane specifications

Boom	<p>3-section full power telescoping boom. System consists of one double acting hydraulic cylinder with load holding valves and extension and retraction cables.</p> <p>Retracted length: 35' 10" Extended length: 89' 3" Extension time: 82 s Elevating angles: -1.5° to 80.0° Elevating time: 56 s Max. lifting height: 86' 9" Boom head: Five cast nylon and one steel 14.7 inch diameter main sheaves on heavy-duty roller bearings.</p>
Auxiliary boom head	<p>Quick reeve, single 14.7 inch diameter high-strength, cast sheave mounted on a heavy-duty roller bearing. Allows single part reeving.</p>
Counterweight	<p>1 piece integrated counterweight design. Fixed configuration = 12,500 lb.</p>
Winches	<p>Planetary geared single-speed winch includes a hydraulic motor, multidisc internal brake and counterbalance valve. Drum rotation indicator is included (complete winch performance specs on page 16).</p> <p>Main winch: Rope diameter and length: 0.625 in. x 500 ft Single line pull: 13,311 lb – first layer Single line speed: 256 ft/min – 4th layer</p> <p>Auxiliary winch (optional): Rope diameter and length: 0.625 in. x 300 ft Single line pull: 13,311 lb – first layer Single line speed: 256 ft/min – 4th layer</p>
Travel	<p>Each side frame contains a pilot controlled, two-speed track drive with hydraulic axial piston motor and parking brake. Travel system provides skid steering and counter rotation.</p> <p>Travel speed: 1.4 mph / 2.4 mph Gradeability (unladen): 74% Unladen ground pressure: 7.6 psi</p>
Swing	<p>Gear motor driving a planetary gear reducer with a shaft mounted pinion, external gear shear ball slew bearing bolted to the superstructure and the carbody allows the superstructure to rotate 360°.</p> <p>Swing speed: 0 - 2.2 rpm. Swing parking brake: Spring applied failsafe brake with hydraulic release that is controlled from the operators cab. Swing service brake: Hydraulically applied, controlled through foot actuated pedal. House lock system: 2-position house lock (boom over front or rear). Actuated from the operator's cab.</p>
Load moment indicator	<p>TADANO AML-C rated capacity limiter and anti-two block system: OPTI-WIDTH™ – OPTIMAL lifting performance at any track WIDTH. Control function shutdown. Audible and visual warnings. LCD screen provides a continuous display of working boom length, boom angle, working load radius, tip height, swing position, parts-of-line (operator set), machine track configuration, relative load moment, maximum permissible load and actual load. Anti-two block weight allows quick reeving of hook block. Operator configurable working range limits with automatic soft stop.</p>
Frame	<p>The frame is an all-steel, welded structure, precision machined to accept attachment of the boom and swing components.</p>
Operators cab	<p>Fully-enclosed, air conditioned all-steel modular cab with lockable sliding door, acoustical lining, anti-slip floor and tinted safety glass.</p> <p>Rear view, winch view and right side view video cameras. Three remote control work lights. Grab bars and steps are located for easy access to the cab. Defroster, heater, circulating fan. 2-speed windshield wiper, top glass wiper. Six-way adjustable fabric seat with headrest, seat belt. Dome light. Dry-chemical fire extinguisher. Four-way electronic armrest mounted joysticks control swing, main winch, auxiliary winch, boom hoist and boom extend. Foot pedals control the travel and swing service brake functions. Swing brake pedal is hydraulic. Selectable modes for fine control and travel. Travel function can be operated by foot pedals or joystick. Seat termination switch immediately disables all hydraulic functions as the operator rises from the seat. Functions can also be disabled by switch on console. Dash instrumentation: tachometer, hour meter, fuel gauge, and DEF level gauge. Indicators are provided for crane level, swing position, load moment, drum rotation, air filter restriction, engine oil temperature and pressure, hydraulic oil temperature and level, and hydraulic and air filter restriction, and low voltage.</p>

Technical Description

Crane specifications

Engine	Make/Model: Cummins QSB4.5 · Type: 4 cylinder, water cooled, 4 cycle · Aspiration: turbocharged and aftercooled · Max. output: 173 HP (129 kW)@2200 rpm · Max. torque: 520 lb-ft (705 Nm)@1500 rpm · Piston disp: 4.5 l · Emission Cert: U.S. EPA Tier 4f, Euromot Stage V.
Electrical system	24 VDC.
Fuel system	Capacity: 75 gallons. Filtration: Inline fuel/water separator and engine mounted fuel filter.
Side frames	Two welded steel side frames are paired with a track group. The side frames extend and retract hydraulically and are controlled from the cab. Track rollers: Three top and ten bottom sealed rollers on each track frame Idler: Oil filled, self lubricating with spring type tensioner. Track shoes: 29.5 inch, 3-bar semi grouser.
Hydraulic system	Hydraulic pumps: One high pressure, variable axial piston pump with load sense and power limiting control for crane functions. One gear pump for cooling function. Directional valves: Multiple pressure and flow compensated valves with integrated relief valves controlled by electrical signals. Pump output: 110 gpm@2200 rpm engine speed. 5,000 psi maximum pressure. Reservoir: 119 gallons capacity, filler/breather, sight gauge, cleanout, and sump drain. Filtration: Three 5-micron, full flow, tank-mounted return filters with electrical clogging indicator. 3-micron pilot oil in-line pressure filter. Diagnostic ports: Provided for system, load sense, and pilot pressure.
Extendable jib	Main jib: Total length: 23' 6" Max. lifting height: 109' 8" Offset angles: 5°, 25° and 45° Fly jib: Total length: 42' 0" Max. lifting height: 127' 6" Offset angles: 5°, 25° and 45°
Hook block	35 ton block – four sheaves, lockable swivel hook and safety latch.
Telematics	Machine data logging and monitoring system with HELLO-NET via Internet.
360° house lock	Actuated from the operator's cab.

Optional equipment

Overhaul ball	4.4 ton with swivel hook and safety latch.
Track shoes	18 inch, 3-bar semi grouser.
Auger	Hydraulic auger boom package includes auger motor, hoses, fasteners, and stowage bracket assembly mounted to the 2nd stage section of boom for variable radius drilling.
Tool circuit	Provides 5 gpm and 10 gpm@2,500 psi through a 50 ft twin hose reel with quick disconnect fittings to operate open center tools.
Controlled free fall hoists	Winches are available in controlled free fall configurations.
Cold weather packages	Cold weather options are available for operation to -40°C (consult factory for application support).
Work platform	Model WP750 – 36 inch x 72 inch, all steel, welded, two person platform with maximum capacity of 750 lb.
Full function radio remote control package	
Boom mounted anemometer with cab display	
Automatic central lubrication system	

tac.sales@tadano.com
www.tadano.com

Tadano Ltd.

Kanda Square 18th Floor, 2-2-1 Kanda-Nishikicho, Chiyoda-ku, Tokyo 101-0054, Japan
Phone: +81-3-6811-7309 (International Division)

Tadano America Corporation

4242 West Greens Road, Houston, TX 77066
Phone: +1 (281) 869-00300 · Fax: +1 (281) 869-0040



Reaching new heights

