

AS-15MC

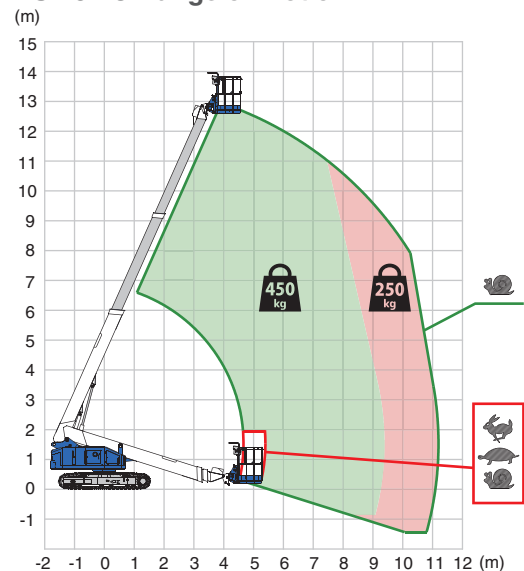
TELESCOPIC CRAWLER BOOM

MODEL HIGHLIGHTS

- Steel tracks with grey non-marking pads
- 360° continuous turntable rotation
- Dual lifting capacity
- Low emission engine
- Full range traveling
- Low ground pressure
- Auxiliary lowering control



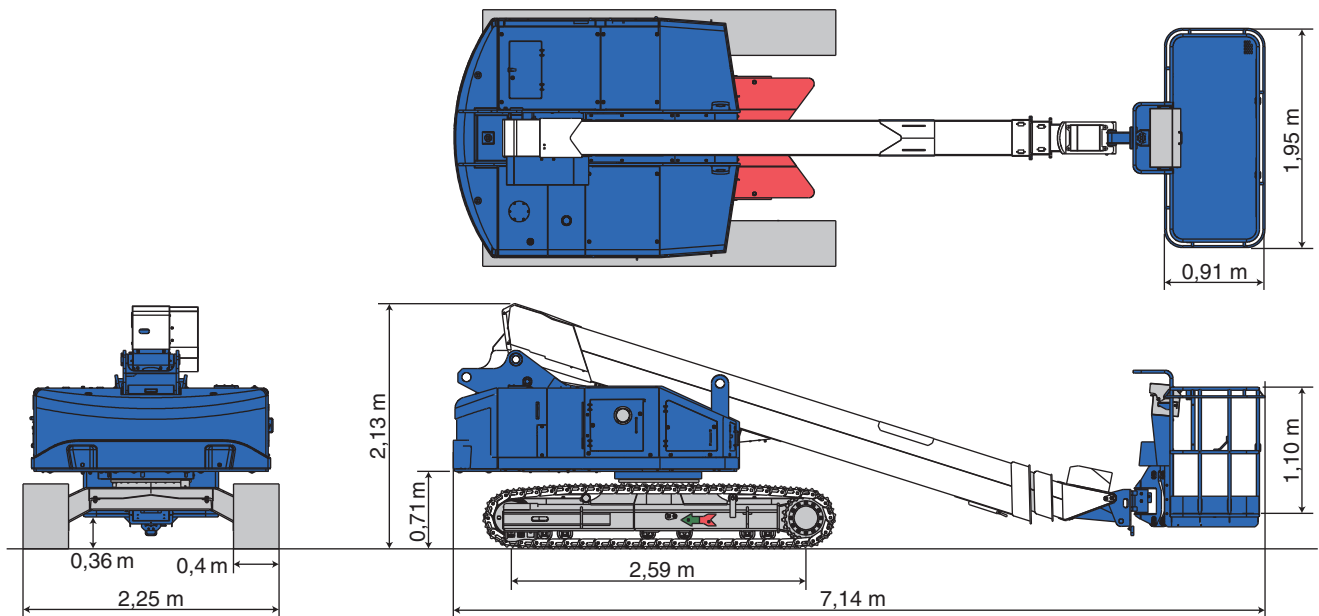
AS-15MC Range of motion



Model	AS-15MC
Max. platform capacity	450 kg / 250 kg
Platform size	1,95 x 0,91 x 1,10 m
Max. work height	14,70 m
Max. outreach	11,20 m

When difficult areas need to be reached, the easy-to-store and versatile AS-15MC helps you reach up and around.

Model		AS-15MC	
SPECIFICATIONS		POWER SOURCE	
Max. work height	14,70 m	Engine type	Kubota D1305
Max. outreach	11,20 m	Rated power	17,5 kW / 2400 min ⁻¹
Allowable tilt	5°	Fuel tank capacity	100 l
Max. platform capacity	450 kg / 250 kg	OPTIONS	
Platform size (L x W x H)		8 ft platform	2,53 x 0,89 x 1,10 m
6 ft	1,95 x 0,91 x 1,10 m	Generator	5 kW
8 ft	2,53 x 0,89 x 1,10 m	LED lighting	
Platform rotation	L90° ~ R90°	SAFETY DEVICES	
Transport dims (L x W x H)	7,14 x 2,25 x 2,13 m	Emergency stop	✓
Machine weight	9.060 kg	Foot switch / Enabling switch	✓
AC outlet to platform (230 V)		Auxiliary lowering control	✓
TRAVEL		Traveling restriction (on slope)	✓
Max. travel speed	2,7 km/h	Operation restriction (on slope)	✓
Max. ground pressure	145 kPa	Overload sensing system	✓
Travel position ground pressure	45,01 kPa	Battery isolator switch	✓
Max. gradeability	57%		



For all our types:



March 2025. Unless otherwise specified, all information in this brochure refers to a standard equipment, and it is intended as general information only. No liability is assumed. Errors reserved. Product specifications and prices are subject to changes without notice. The photographs and/or drawings in this brochure are for illustrative purposes only. For correct and safe operation, the original operating manual and lifting capacity charts are essential. Failure to follow the corresponding Operator's Manual when using our equipment or failure to otherwise act responsibly may result in property damage, serious injury or death. The sole warranty applicable with respect to our equipment is the standard warranty as per general terms and conditions of sales and service (ask your local Tadano dealer for details), and Tadano makes no other warranty, express or implied. All rights reserved. Any use of the trademarks, logos, brand names and model names used herein is prohibited.

© Tadano Ltd. 2025

Tadano Ltd.

Kanda Square 18th Floor, 2-2-1 Kanda-Nishikicho, Chiyoda-ku, Tokyo 101-0054, Japan
Phone: +81-3-6811-7309 (International Division)

info@tadano.com

www.tadano.com

Tadano Europe Holdings GmbH

Dinglerstr. 24, 66482 Zweibrücken, Germany, Phone: +49 (0) 6332 83-0

