



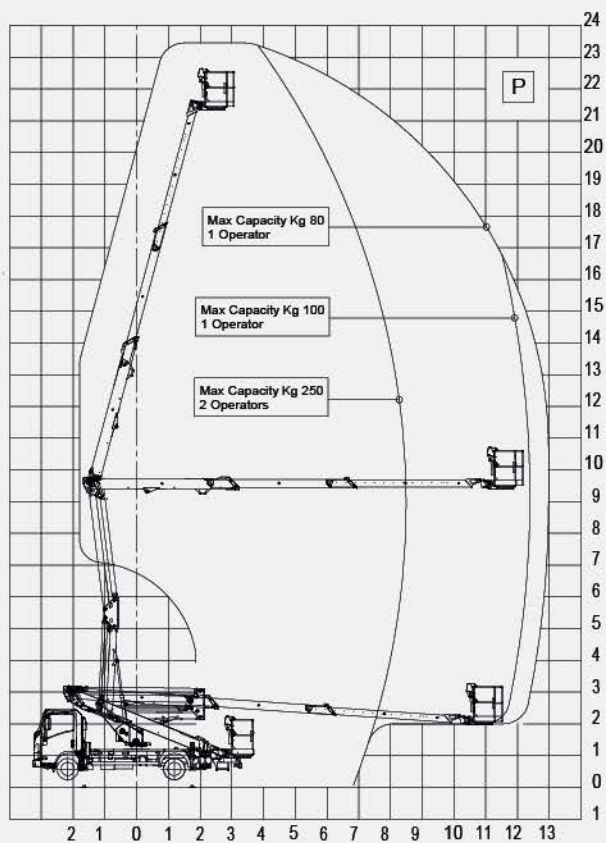
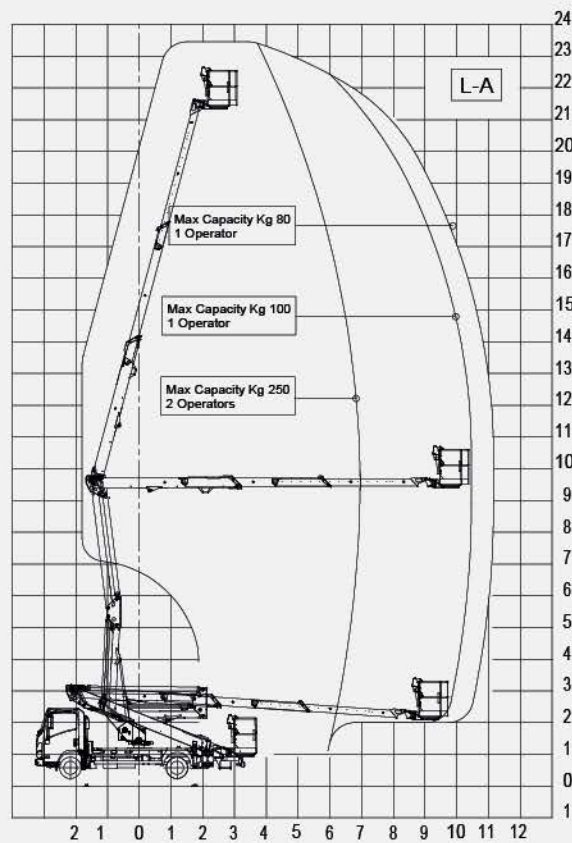
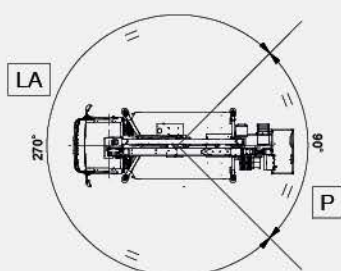
snake 24 FB
on Isuzu M21 - P 3360



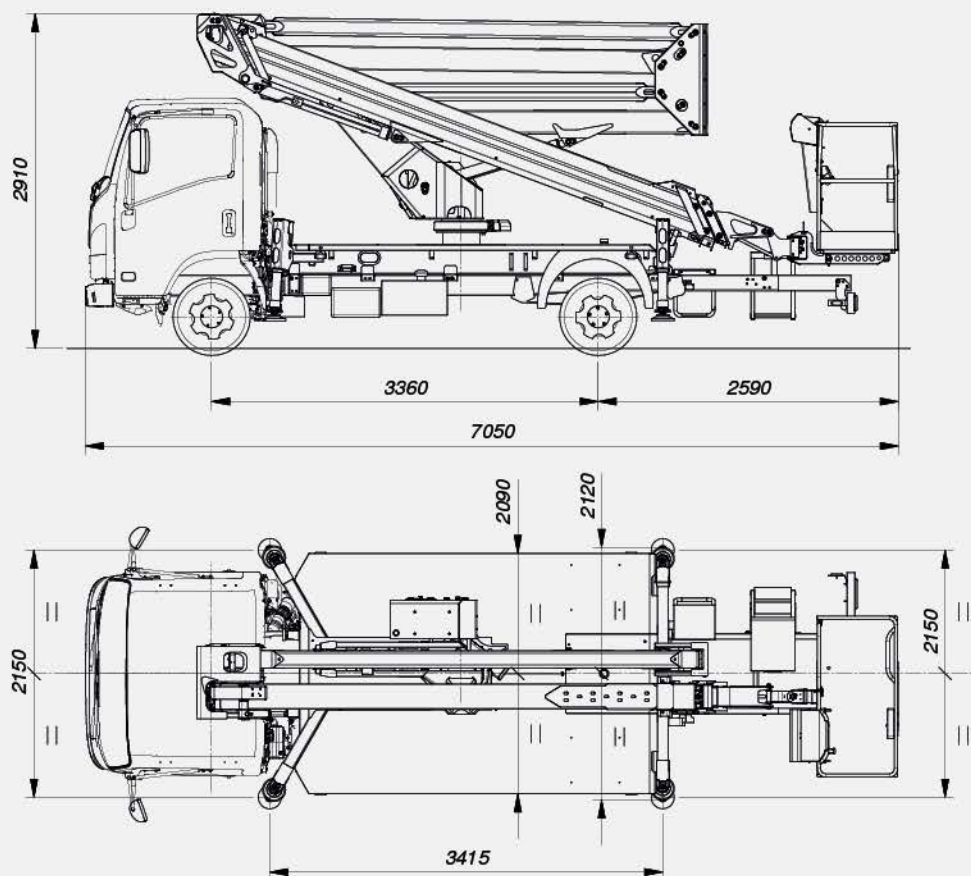
ENG



Work area



Technical drawings



Technical features

Maximum working height	23.5 m
Maximum working outreach	13 m
Maximum load capacity	250 kg
Basket	Alu 1.4 x 1.1 x 0.7 m
Controls	Electro-hydraulic aerial part, hydraulic outriggers
Column rotation	400°
Basket rotation	+/- 90°
Outriggers	H
Machine length	7050 mm
Technical drawings	2910 mm
Machine width	2150 mm

Optional

Aluminium basket with door (instead of standard version)

Fibreglass basket 1400 x 700 x 1100 mm (instead of standard version)

Fibreglass basket 1400 x 700 x 1100 mm + 1KV Insulation (instead of standard version)

Electro-hydraulic outrigger controls (instead of hydraulic stabilisation)

Automatic stabilisation from basket (standard with electro-hydraulic outrigger controls)

Automatic stabilisation from ground (optional with electro-hydraulic outrigger controls)

7" touch-screen display on column with protection

Basket automatic centering

Homing Function and Memory Function

Working height limitation (Rental Kit)

Electronic chassis angle indicator (standard if with automatic stabilisation)

Multipurpose air-water line to basket

Kit with 4 nylon outrigger support plates

Kit with 2 seat belts with lanyard

Debris protection kit

12 Vdc electrical socket on basket

12 Vdc electrical socket + 60 W light on basket

12 Vdc electrical socket + LED light on basket

12Vdc - 1.6 Kw electric pump for emergency descent

12 V yellow light magnetised rotating beacon for truck cab

12 V blue light magnetised rotating beacon for truck cab

12 V yellow light rotating beacon for truck cab + bar

12 V yellow light rotating beacon for truck cab + bar + triangle for signalling work in progress

Parking chocks

Plastic tool box size 480 x 400 x 400 mm under loading bed

Bike rails

White - red retroreflective sign

Fixed aluminum side panels 100/150/200 mm height

Drop-down panels on 1 side (right) - 100/150/200 mm height

Drop-down panels on 2 sides - h 100/150/200 mm height

Smaller 40 L diesel tank

Truck cabin painting different from standard

Customer stickers

Remote connectivity kit (+ Industry 4.0 for ITA)

Low Part/Aerial-Part key selector kit

Aerial part painting different from standard

Vehicle air conditioning

ALL SEASON tyres

Isuzu rear cab cover

Car radio with Bluetooth + USB

/ Truck standard features

ISUZU M21T Euro 6d D.3360 mm ENGINE 1898 cm³-120 CV (88 kW)

Adjustable steering wheel position (tilt and height)

Electric window lift

Manual headlight height adjustment

Automatic headlight illumination

LED lights

Front and rear fog lights

Central locking with remote control

Sun visor (driver)

Reverse gear warning sound

Seat belt buzzer

/ Aerial platform standard equipment

Electric PTO with automatic release

Audible PTO engaged device with handbrake released

PTO-connected hour counter on the vehicle dashboard

Warning lights on cab hour meter indicating PTO engaged and outriggers out of footprint

Switch-on/off of main engine (and any auxiliary engine) from basket and column

Emergency button with engine stop in basket and on column

220 or 110 Vac single-phase electric socket with RCD on basket

Electro-hydraulic aerial controls

Hydraulic outrigger controls

Push-button panel in basket with levers and 4" display

Torque detection and limitation system

Boom angle/extension limitation system

"In shape" stabilization

Extendable structure/cab and chassis anti-collision system

Hand pump for emergency descent

Piping and cables inside the booms

Two-position aluminium basket 1400 x 700 x h 1100 mm - Front entry with gravity bar

Hydraulic basket rotation 90° right - 90° left with rotary actuator

Metal covers to protect column and basket controls

Thermal protections on the electrical system

Check valves on all cylinders

Pressure relief valves on the hydraulic circuit

Non-slip aluminium floor

Steelwork and stainless steel screw anti-corrosion treatment

Standard Grey and Blue painting (Grey=Ral 7001 - Blue=Ral 5002)

Plastic pads on outriggers

Chassis control panel for aerial movement control



PM OIL&STEEL SPA
S. Cesario sul Panaro
IT - 41018 - Modena
Via G.Verdi, 22

Tel.: +39 059 936811
Fax: +39 059 936800

info@oilsteel.com
www.oilsteel.com



Oil&Steel is a brand of Manitex International