



***snake*** 2111 J Plus  
on Isuzu M21

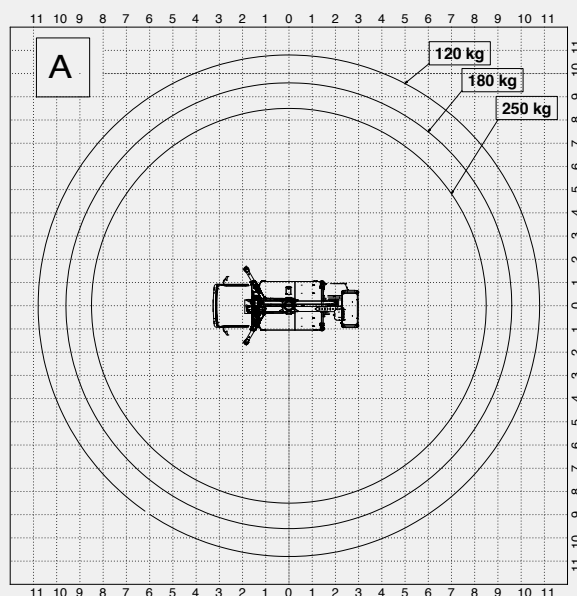
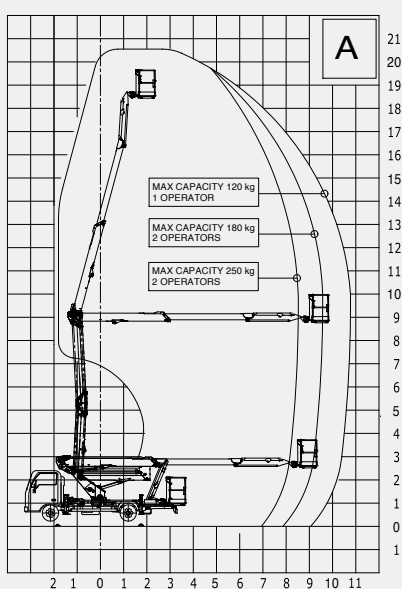


ENG

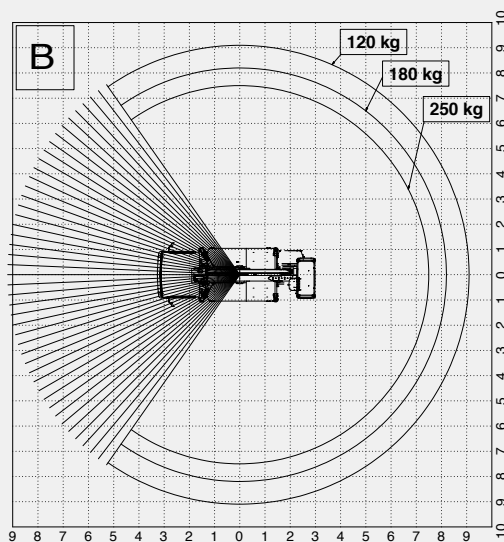
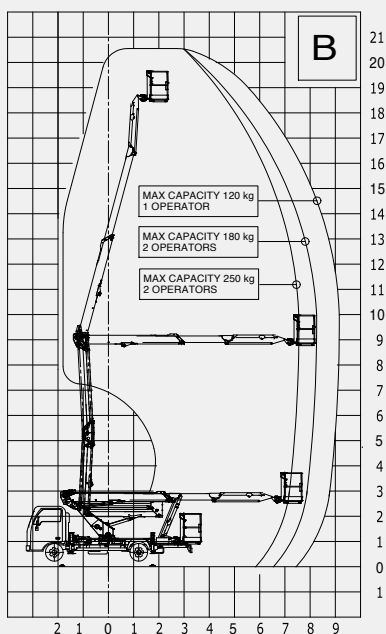


## Work area

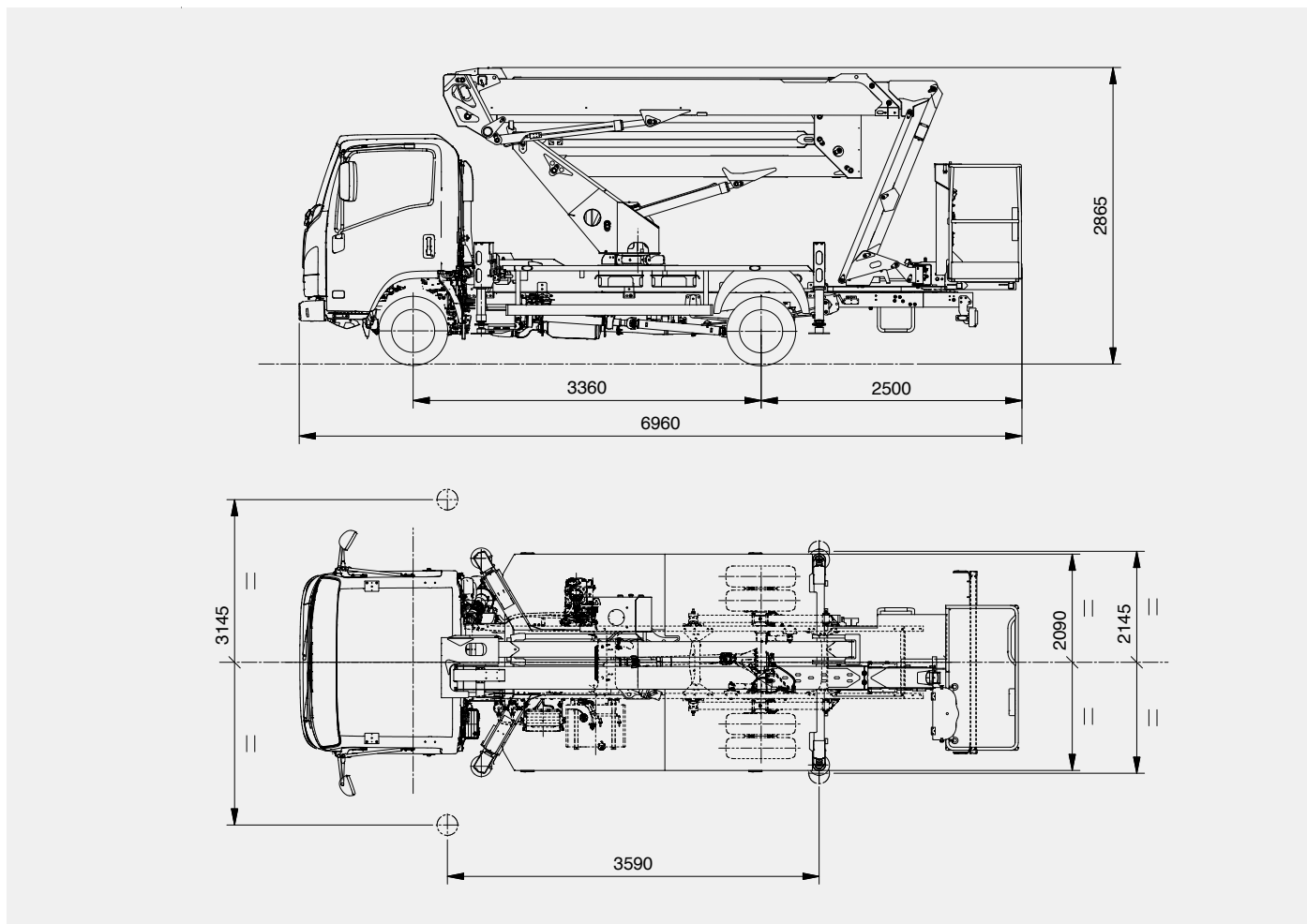
**Snake 2111J on Isuzu M21- Wheelbase 3360 -Front Crossbeams Fully Extended**



**Snake 2111J on Isuzu M21- Wheelbase 3360 -Front Crossbeams Fully Closed**



## Technical drawings



## Technical features

Maximum working height	20,6 m
Maximum working outreach	10,8 m
Maximum load capacity	250 kg
Basket	Alu 1,4 x 1,1 x 0,7 m
Controls	Aerial part: electro-hydraulic / Outriggers: hydraulic
Column rotation	400°
Basket rotation	+/- 90°
Outriggers	H
Machine length	6960 mm
Machine height	2865 mm
Machine width	2090 mm

## Optional

Boom and platform treated using corrosion-resistant paint, screws in stainless steel

Air-water line supply to the basket

Hydraulic extension of front crosspieces

Electro-hydraulic extension of outriggers (it includes automatic stabilization from the basket + homing function)

Homing Function

Underride guards

Underride guards with plastic toolbox (only if plastic toolbox is included as optional)

Junction debris protection kit

Fiberglass basket 1400 x 700 x 1100 mm (instead of standard)

Fiberglass basket 1400 x 700 x 1100 mm + insulation 1 KV (instead of standard)

Aluminium basket with door (instead of standard version)

Kit 4 nylon outrigger plates

Working height limiting system (Rental Kit)

Tilt sensor

12V DC socket + Working light 60W on basket

12V DC socket on the basket

Kit 2 harnesses

Automatic stabilisation from ground

Auxiliary single-phase 110 V AC - 2.2 kW electrical pump

Electrical pump 12 V DC 1.6 kW for emergency descent

12V amber light rotating beacons for truck cab + bar

12V amber light rotating beacons for truck cab + bar + triangle

Magnetic 12 V revolving blue light for truck cabin

Magnetic 12 V revolving orange light for truck cabin

Plastic toolbox with dimensions 480 x 400 x 400mm placed under the deck

Red and white reflective decals on truck

Fixed side panels 100/150/200 mm height

Drop-down panels on 1 side - 100/150/200 mm height

Drop-down panels on 2 sides - h 100/150/200 mm

Truck cabin painting different from standard

Aerial part painting different from standard

Extended warranty 2 years (+1 year in addition to standard warranty conditions)

Extended warranty 3 years (+2 years in addition to standard warranty conditions)

Air conditioning system

Remote connectivity kit

## / Truck standard features

ISUZU M21 GROUND BLUE H P. 3360 MOTORE 1900 cc - 123 CV - EGR - DPD - LNT

Adjustable steering wheel (tilt and height)

Power windows

Manual headlamp leveling system

Reverse warning beeper

Front and rear fog lamps

Central Locking with remote control

Sun visor (driver's seat)

## / Aerial platform standard equipment

Power takeoff with electrical start-up and automatic release

Power takeoff on with no handbrake warning siren

Power takeoff hour counter fitted on the dashboard of the vehicle

Warning lights on the hour counter inside the cabin showing pto on and when outriggers are outside the vehicle profile

Switch-on/off of main engine (and any auxiliary engine) from basket and column

Engine emergency stop button from the basket and from the column

Single-phase, 220 or 110 v ac power socket and differential overload switch fitted on the basket

Truck cabin anti-collision system

Load detection and limiting system

Electro-hydraulic aerial controls

Outriggers hydraulic controls

Manual extension of front crosspieces

Work with asymmetrical crosspieces

Two-person aluminum basket with dimensions 1400 x 1100 x 700 mm

Hydraulic rotation of the basket 90° right - 90° left

Hand pump for emergency descent

Protective casing on the control box on the column and on the basket

Thermal protection on the electrical system

Lock valves on all cylinders - Hydraulic circuit maximum pressure valves

Anti-slip aluminum decking

Standard Grey and Blue painting (Grey=Ral 7001 - Blue=Ral 5002)



**PM OIL&STEEL SPA**  
S. Cesario sul Panaro  
IT - 41018 - Modena  
Via G.Verdi, 22

Tel.: +39 059 936811  
Fax: +39 059 936800

[info@oilsteel.com](mailto:info@oilsteel.com)  
[www.oilsteel.com](http://www.oilsteel.com)



Oil&Steel is a brand of Manitex International