



IC-1 REMOTE

IC-1
REMOTE



**CONNECT.
MANAGE.
SERVICE.**

Advanced Telematics Solution

Wind speed



Operating hours

Secure access to cloud-based data

IC-1 Remote provides extraordinary connectivity and is available for nearly all Tadano all-terrain cranes with the IC-1 crane control system and for many Tadano crawler cranes.

- Securely links the office to crane equipment at the jobsite
- Operating data securely stored in a single location
- Cloud-based, efficient data transfer



The Tadano IC-1 Remote advanced telematics solution efficiently connects the office to the jobsite by delivering key crane operating data to your computer or mobile device. Accessed from anywhere via an internet connection, IC-1 Remote provides efficient data monitoring and transfer by consolidating crucial crane operating information into a single storage location, on a secure cloud server.

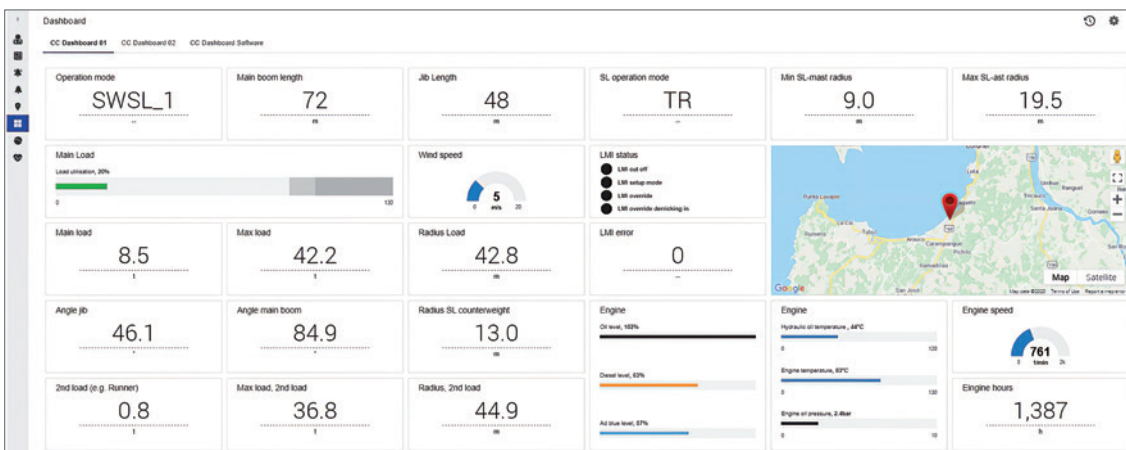
MANAGE

Data analysis for smarter equipment decisions

IC-1 Remote collects data on more than 150 crane operation datapoints, giving you a wealth of information. The opening dashboard details the location and status of all networked cranes for a quick fleet overview. Operating data is easily customized into different reports, saving time by ensuring key personnel, such as fleet and field managers, receive only relevant data.

IC-1 Remote stores this job data, so you can view a specific crane's detailed work history. Analysis of a specific crane's completed project and configuration history gives you the data you need to make more informed equipment acquisitions, so you invest in the right equipment for your fleet.

- Fleet Overview
- Clear list view of data summary
- Customizable dashboards for key data
- Easy-to-analyze diagrams
- Ability to generate alerts and regular reports





FEATURES (SELECTION):

OPERATION-RELATED DATA

- Location
- Main boom length
- Jib length
- Counterweight
- Outrigger base
- Load
- Radius
- Wind speed

SERVICE-RELATED DATA

- Operating hours
- Temperatures
- Filling levels
- Pressures
- Rotational speeds
- Software versions
- Error codes

SERVICE

Increased uptime & highly efficient remote support

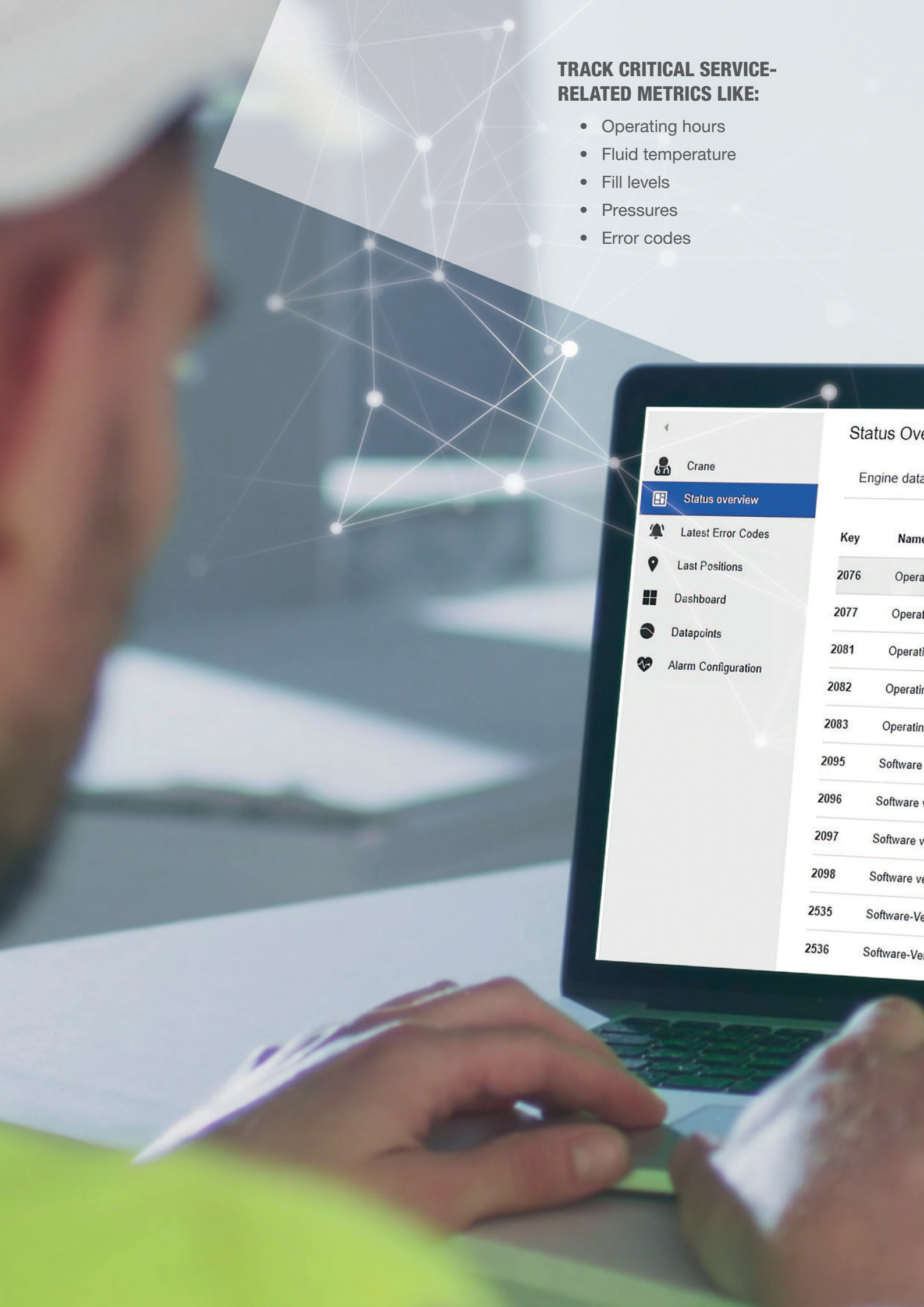
With Tadano's advanced telematics solution, you can maximize crane uptime. Service technicians can see error codes in the portal and use this to directly handle small issues. The system allows you to set specific operating thresholds for items like hoist service hours and oil levels and generate automatic trigger notifications.

IC-1 Remote gives you more control by enabling you to schedule routine maintenance for times that don't interfere with operations. Unlike other crane telematics solutions, IC-1 Remote makes it possible to remote crane troubleshooting. Service team members can remotely access control information and run a fault analyses to help quickly diagnose and resolve issues.



TRACK CRITICAL SERVICE-RELATED METRICS LIKE:

- Operating hours
- Fluid temperature
- Fill levels
- Pressures
- Error codes



The image shows a person wearing a white hard hat and a high-visibility yellow safety vest, viewed from the side. They are looking at a laptop screen. The laptop screen displays a software interface for monitoring a crane. The interface has a sidebar menu on the left with the following items: 'Crane' (with a person icon), 'Status overview' (highlighted in blue with a grid icon), 'Latest Error Codes' (with a bell icon), 'Last Positions' (with a location pin icon), 'Dashboard' (with a window icon), 'Datapoints' (with a circle icon), and 'Alarm Configuration' (with a heart icon). The main area of the screen shows a table titled 'Status Overview' with a subtitle 'Engine data'. The table has two columns: 'Key' and 'Name'. The table contains several rows of data, with some rows highlighted in grey.

Key	Name
2076	Operat
2077	Operat
2081	Operati
2082	Operatin
2083	Operatin
2095	Software
2096	Software
2097	Software v
2098	Software ve
2535	Software-Ver
2536	Software-Ver

info@tadano.com
www.tadano.com

Tadano Ltd.

Kanda Square 18th Floor, 2-2-1 Kanda-Nishikicho, Chiyoda-ku, Tokyo 101-0054, Japan
Phone: +81-3-6811-7309 (International Division)

Tadano Europe Holdings GmbH

Dinglerstr. 24, 66482 Zweibrücken, Germany
Phone: +49 (0) 6332 83-0



YC-1 REMOTE

© Tadano Ltd. 2025

Reaching new heights

