

PM RANGE : BASE LINE CATALOGUE



**STRONG** BY DESIGN  
**LOCALLY SUPPORTED**  
**READY TO LIFT**

 **TADANO**





# INITIAL PM LINE UP

The products listed below represent our baseline range, carefully selected to meet the specific needs of the Oceania market. Each model has been chosen for its proven reliability, practical features, and suitability for local operating conditions, offering a solid foundation for a wide range of lifting applications.



**LIGHT DUTY** PM 8.5P



**LIGHT DUTY** PM 11 SP



**MEDIUM DUTY** PM 18 SP



**MEDIUM DUTY** PM 38.5 SP







# Why Tadano PM

When you choose Tadano PM, you're choosing more than a crane – you're investing in a smarter, stronger solution built for success. With global strength and **local support**, Tadano PM combines proven European engineering with the trusted backing of Tadano Oceania's **expert service network**, giving you peace of mind on every job.

It's a smart investment, delivering exceptional value per dollar with **reliable performance** that's been tested and proven. Designed to be **ready for work in real Australian conditions**, PM models are equipped with the essential technology and features that operators actually need – no fluff, just function. With trusted performance grounded in real feedback from real users on real jobs, Tadano PM delivers **confidence you can count on**.

**STRONG** BY DESIGN

LOCALLY **SUPPORTED**

READY TO **LIFT**



# PM 8523 P

**elevate to the highest power**

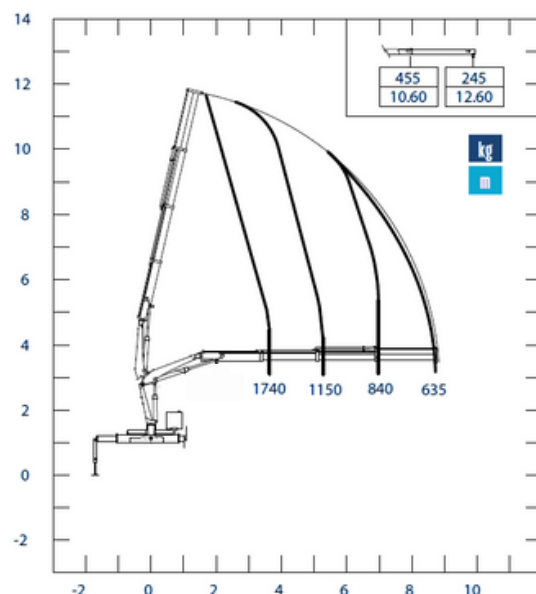
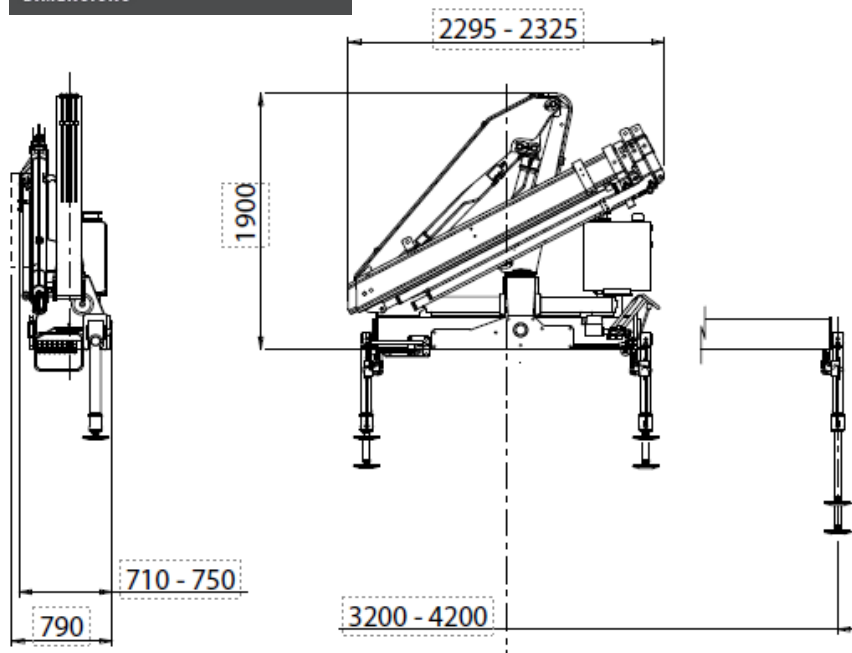
The **8.5P** delivers powerful lifting performance without the weight, thanks to its load-sensing proportional controls and high-efficiency Plus system. Operators benefit from safer, more stable lifts with the standard Type 2 Interlock Stability System and overload protection.



MAXIMUM LIFTING MOMENT	6,3 TM
HYDRAULIC OUTREACH	
Horizontal	8,85 m
Vertical	11,70 m
HYDRAULIC SYSTEM	
Recommended oil flow	30 l/min
Max. pressure	28 MPa
Tank capacity	64 l
SLEWING SYSTEM	
Slewing angle	400°
Slewing torque	10,0 kNm
STABILISATION	
Spread available	3,2 - 4,2 m
Interlock available	1 - 2
Stabiliser control	Manual
STANDARD CRANE WEIGHT	
With empty tank	1000 kg



## DIMENSIONS



## STANDARD EQUIPMENT



Manual extension stabilizer arms



Automatic safety devices for stabilizers engaged



Sequential arm extension output

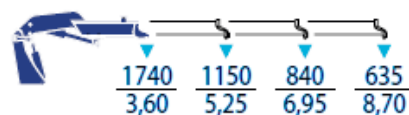


Rack



Manual rotary stabilizer jacks

## LIFTING CAPACITIES



\*All technical data, descriptions and illustrations are purely indicative and subject to change at PM Oil&Steel own discretion and without notice.





### Compact power with advanced control.

The 8.5P comes standard with a proportional hydraulic distributor, multifunction radio remote, and the high-performance Plus system. Despite its low weight, it delivers impressive lifting capacity with reach up to 10.65 m horizontally and 13.50 m vertically via four hydraulic extensions, and up to 12.60 m horizontally and 15.45 m vertically with manual extensions. Safety features include a moment limiter and a Type 2 Interlock Stability System. An LC version is also available, featuring a retractable first boom for easier handling in tight spaces.

#### OPTIONAL



Hose racks



Air/oil heat exchanger



Tank



Manual extensions



LMU CE control system for mechanical extensions



Electro-hydraulic slewing limiter



LC configuration



4mt alarm sensor



# PM 8524 P

elevate to the highest power

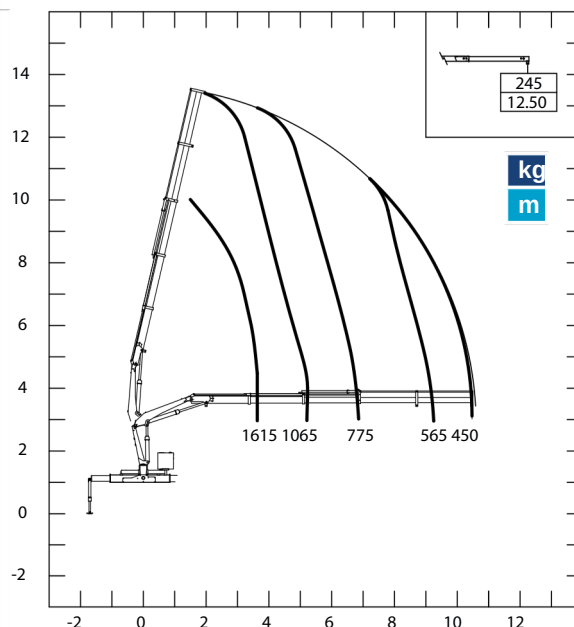
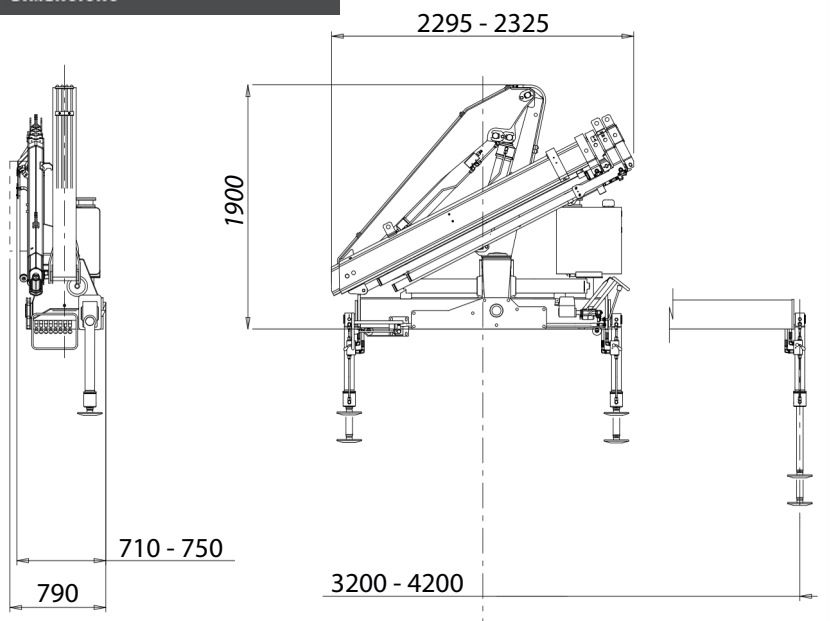
All 8.5P configurations are engineered to deliver exceptional performance and high lifting capacity, especially impressive given their compact, lightweight design. This makes them ideal for operators who need powerful lifting without compromising on mobility or transportability. The advanced Plus system further boosts precision, responsiveness, and overall efficiency, enhancing productivity on every job.



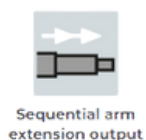
MAXIMUM LIFTING MOMENT	6,0 TM
HYDRAULIC OUTREACH	
Horizontal	10,65 m
Vertical	13,50 m
HYDRAULIC SYSTEM	
Recommended oil flow	30 l/min
Max. pressure	28 MPa
Tank capacity	64 l
SLEWING SYSTEM	
Slewing angle	400°
Slewing torque	10,0 kNm
STABILISATION	
Spread available	3,2 - 4,2 m
Interlock available	1 - 2
Stabiliser control	Manual
STANDARD CRANE WEIGHT	
With empty tank	1060 kg



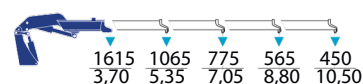
## DIMENSIONS



## STANDARD EQUIPMENT



## LIFTING CAPACITIES



\*All technical data, descriptions and illustrations are purely indicative and subject to change at PM Oil&Steel own discretion and without notice.





### Smart design for tight spaces.

The PM 8.5P is engineered with a smart, compact design that excels in tight or confined worksites. Its optional LC version features a hydraulically retractable inner boom, enabling easier access and improved manoeuvrability in restricted spaces without compromising lifting capacity or reach. This makes it ideal for urban construction, indoor projects, or any jobsite where space is limited and precision is essential. With the PM 8.5P, you get powerful performance tailored for challenging environments.

#### OPTIONAL



Hose racks



Air/oil heat exchanger



Tank



Manual extensions



LMU CE control  
system for mechanical  
extensions



Electro-hydraulic  
slewing limiter



LC configuration



4mt alarm sensor



# PM 11025 SP

elevate to the highest power

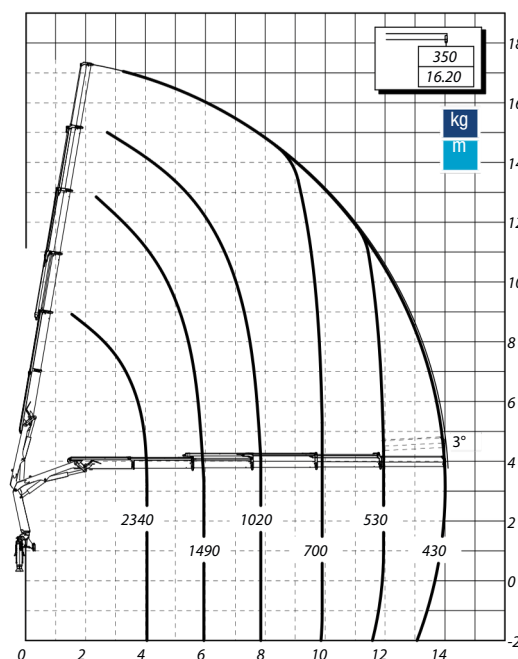
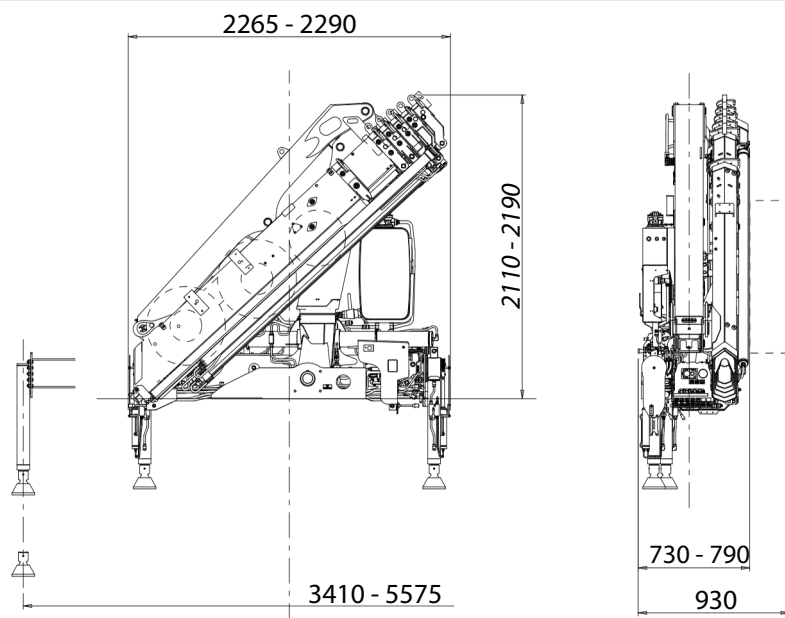
Lightweight and easy to use, with an excellent power-to-weight ratio and compact size, this range features extremely high performance, reliability & easy maintenance.



MAXIMUM LIFTING MOMENT	9,5 TM
HYDRAULIC OUTREACH	
Horizontal	14,10 m
Vertical	17,00 m
HYDRAULIC SYSTEM	
Recommended oil flow	40 l/min
Max. pressure	35,5 MPa
Tank capacity	80 l
SLEWING SYSTEM	
Slewing angle	400°
Slewing torque	12,0 kNm
STABILISATION	
Spread available	3,4 - 5,0 - 5,5 m
Interlock available	3 - 4 - 5
Stabiliser control	Radio
STANDARD CRANE WEIGHT	
With empty tank	1475 kg



## DIMENSIONS



## STANDARD EQUIPMENT



Air-oil heat exchanger



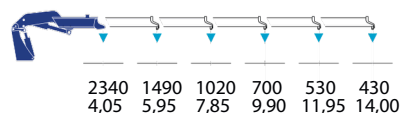
Rack



Multifunction radio remote control

\*All technical data, descriptions and illustrations are purely indicative and subject to change at PM Oil&Steel own discretion and without notice.

## LIFTING CAPACITIES







#### OPTIONAL



Jib



Hose racks



Hydraulic winch on crane



Hydraulic flip-up outriggers



Hydraulic pull-out outrigger booms



Work spotlight with LED technology

#### Precision, power, and performance,

The PM 11 SP offers a top-tier power-to-weight ratio, easy operation, and low maintenance. Its digital Load Sensing Valve ensures precise, safe movements, making it a leader in its class. Standard radio remote with display keeps the operator in control. With up to 5 hydraulic extensions, it reaches 14.10 m horizontally and 17.10 m vertically. Adding the optional Fly Jib extends reach to 16.05 m and 18.85 m.



# PM 18025 SP

elevate to the highest power

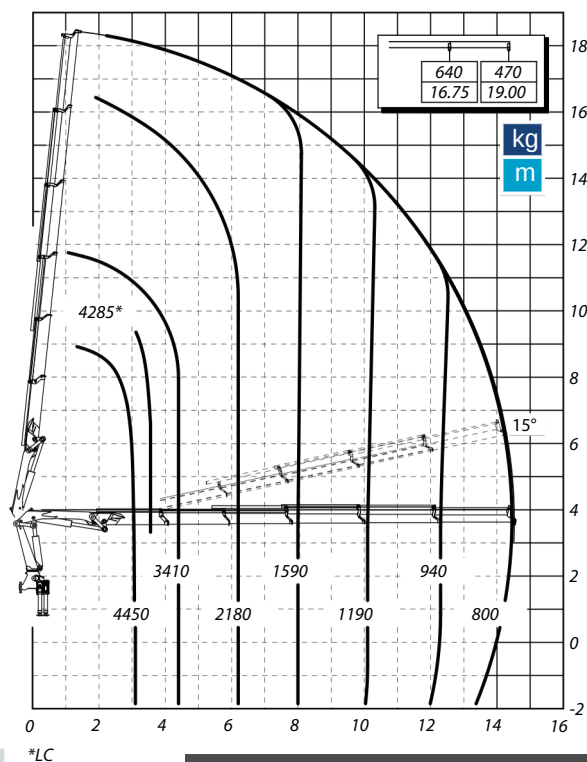
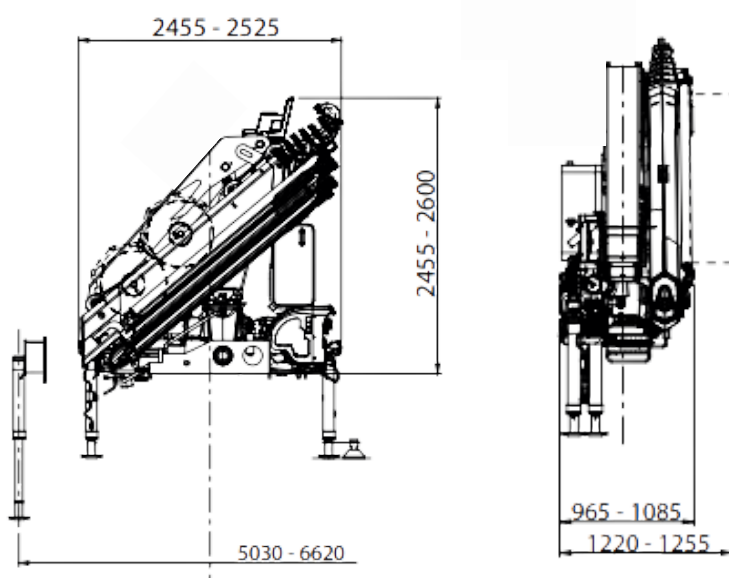


Super-equipped as standard, the **PM 18 SP** is one of the top series in the medium range. The crane stands out for the modernity of its design, its consequent versatility of use and the immediate return on investment.

MAXIMUM LIFTING MOMENT	15,0 TM
HYDRAULIC OUTREACH	
Horizontal	14,50 m
Vertical	18,45 m
HYDRAULIC SYSTEM	
Recommended oil flow	80 l/min
Max. pressure	30,5MPa
Tank capacity	150 l
SLEWING SYSTEM	
Slewing angle	400°
Slewing torque	19,7 kNm
STABILISATION	
Spread available	5,1 - 6,6 m
Interlock available	1 - 3 - 4 - 5
Stabiliser control	Radio Wireless
STANDARD CRANE WEIGHT	
With empty tank	2320 kg



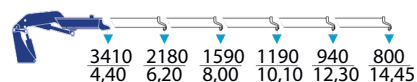
## DIMENSIONS



## STANDARD EQUIPMENT



## LIFTING CAPACITIES



\*All technical data, descriptions and illustrations are purely indicative and subject to change at PM Oil&Steel own discretion and without notice.













### Innovation meets mid-range muscle.

The 18 SP sets a new standard in the mid-capacity class, combining high-performance tech with a compact, versatile design. Key features include a compensated hydraulic distributor, multifunction radio control with display, and the Plus system for enhanced lifting power and smooth operation. Power Tronic ensures real-time control, while the double connecting rod system delivers consistent performance. Available in an LC version for tight spaces, the 18 SP offers up to seven hydraulic extensions (19.05 m horizontal, 22.95 m vertical reach) with optional fly jibs on selected models for even greater flexibility.

#### OPTIONAL

 Jib	 Hose reel	 Hose racks
 Air/oil heat exchanger	 Hydraulic winch on jib	 Hydraulic winch on crane
 Manual extensions	 Electro-hydraulic slewing limiter	 Hydraulic flip-up outriggers
 LC configuration	 Safety Kit for outriggers	 Slewing limiter valve kit
 Slewing limitation with variable calibration		



# PM 38525 SP

elevate to the highest power

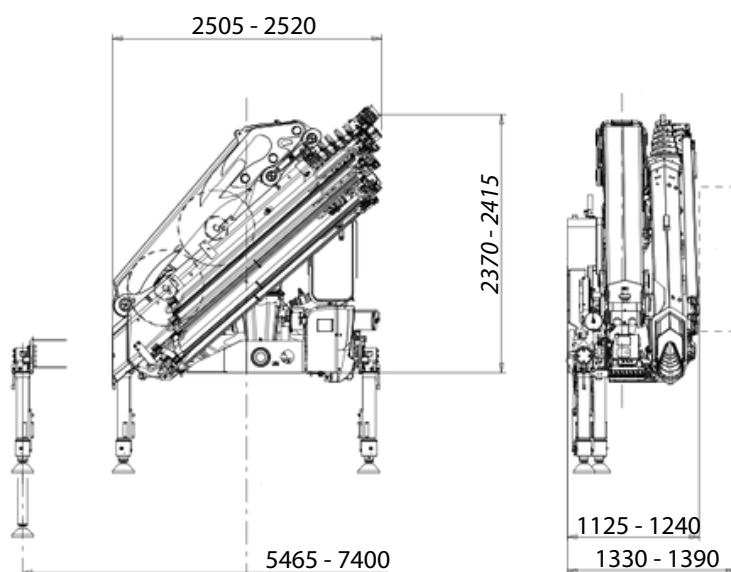


The structural characteristics of this model guarantee maximum reliability and durability, even with heavy duty use, thanks to a robust slewing system with rack and pinion.

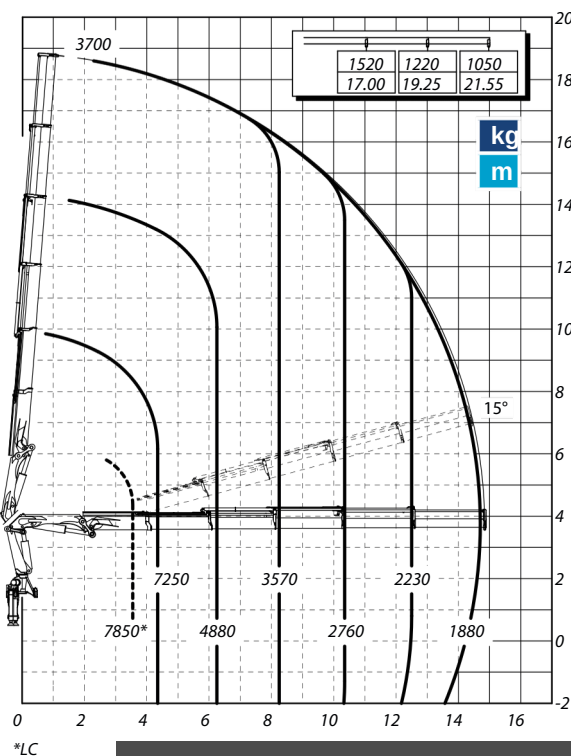
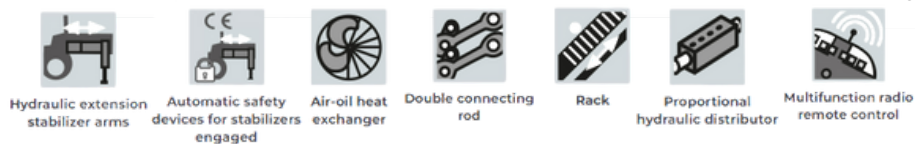
MAXIMUM LIFTING MOMENT	31,5 TM
HYDRAULIC OUTREACH	
Horizontal	14,85 m
Vertical	18,75 m
HYDRAULIC SYSTEM	
Recommended oil flow	80 l/min
Max. pressure	32MPa
Tank capacity	150 l
SLEWING SYSTEM	
Slewing angle	410°
Slewing torque	44,0 kNm
STABILISATION	
Spread available	5,5 - 6,6 - 7,4 m
Interlock available	3 - 4 - 5
Stabiliser control	Radio Wireless
STANDARD CRANE WEIGHT	
With empty tank	3665 kg



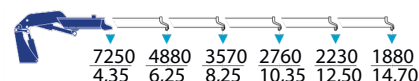
## DIMENSIONS



## STANDARD EQUIPMENT



## LIFTING CAPACITIES



\*All technical data, descriptions and illustrations are purely indicative and subject to change at PM Oil&Steel own discretion and without notice.



### Heavy-duty performance in a compact design.

The PM 38.5 SP delivers high power with reduced weight and dimensions; built tough for demanding jobs. Its robust rack-and-pinion rotation system ensures durability and reliability under heavy use. Advanced electronics give operators greater control, even remotely. Available with up to 8 hydraulic extensions and optional Fly Jib with up to 5 extensions and negative angles of 20° for added versatility.

#### OPTIONAL



Jib



Hydraulic winch on jib



Manual extensions



Manual flip-up outriggers



Hose reel



Hydraulic winch on crane



LMU CE control system for mechanical extensions



LC configuration



Hose racks



Tank



Electro-hydraulic slewing limiter



Slewing limitation with variable calibration



# OUR HISTORY

PM Cranes – A Legacy of Lifting Excellence

## BORN IN ITALY, BUILT FOR THE WORLD.

Founded in 1959 in Modena, Italy, PM Cranes has been a trusted name in truck-mounted and loader cranes for over 65 years. From the beginning, PM combined Italian engineering with practical innovation to deliver safe, efficient lifting solutions for industries around the world.



## DECADES OF INNOVATION

Across the 1960s to 2000s, PM introduced groundbreaking features in crane articulation, hydraulics, and safety systems; expanding its range to suit everything from light utility to heavy industrial applications. Today, PM Cranes operate in over 100 countries worldwide.

## A NEW CHAPTER WITH TADANO

In January 2025, PM Cranes became a wholly owned brand of Tadano Ltd., a global leader in mobile crane manufacturing. This strategic move combines PM's legacy and expertise with Tadano's global reach, service network, and engineering excellence.



## WHAT TO EXPECT

- ✓ Trusted European crane design
- ✓ Backed by Tadano's global support
- ✓ Long-term confidence and parts availability
- ✓ A future-ready investment

Built on heritage. Backed by Tadano. Reaching new heights; together.





# BUILT-IN BENEFITS

Every feature included as standard on our baseline models is thoughtfully selected to deliver the convenience, safety, and efficiency our customers rely on.



## BETTER VISIBILITY, SAFER OPERATION.

The radio remote control gives operators the freedom to move around the jobsite, enabling safer positioning, better visibility of the load, and more precise control of crane functions all from a comfortable distance.

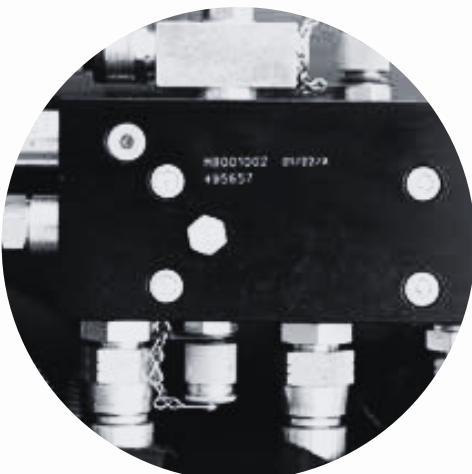
## SMART OUTRIGGERS FOR TIGHT CHASSIS SPACES.

As modern truck designs evolve to meet stricter emission control requirements, available chassis space has become increasingly limited, particularly for fixed outrigger installations. To accommodate this, our stocked models feature swing-up outriggers (manual or hydraulic), ensuring optimal fitment and functionality within these constrained configurations.



## SMOOTHER OPERATION WITH GREATER EFFICIENCY

Smart inverter-controlled oil cooling and advanced hydraulics deliver better energy efficiency, improved fluidity, and precise control during multi-function use.



**STRONG** BY DESIGN  
**LOCALLY SUPPORTED**  
**READY TO LIFT**



WWW.TADANO.COM.AU

## Tadano Oceania Pty Ltd

1/146 Lindum Road, Lytton QLD 4178, Australia Phone + 61

1300 823 266

[info.au@tadano.com](mailto:info.au@tadano.com)

Tadano Ltd. (International Division)

Kanda Square 18th Floor

2-2-1 Kanda-Nishikicho, Chiyoda-Ku, Tokyo 101-0054, Japan

Phone: +81-3-6811-7316



BRANCH LOCATIONS	
QLD Head Office	1/146 Lindum Road, Lytton QLD 4178
WA Branch	79 Armstrong Road, Hope Valley WA 6165
VIC Branch	9 Grimes Court, Derrimut VIC 3026
NSW Branch	24 Leland Steet, Penrith NSW 2749
DEPARTMENT ENQUIRIES	
General Enquiries	<a href="mailto:info.au@tadano.com">info.au@tadano.com</a>
Sales	<a href="mailto:salesgroup.au@tadano.com">salesgroup.au@tadano.com</a>
Parts	<a href="mailto:parts.au@tadano.com">parts.au@tadano.com</a>
Product Support	<a href="mailto:productsupport.au@tadano.com">productsupport.au@tadano.com</a>
Service	<a href="mailto:service.au@tadano.com">service.au@tadano.com</a>