

AT-150S

Maximum working height
16.8 m

Maximum platform height
14.8 m

Maximum platform loading capacity
1,000 kg



MODEL: AT-150S

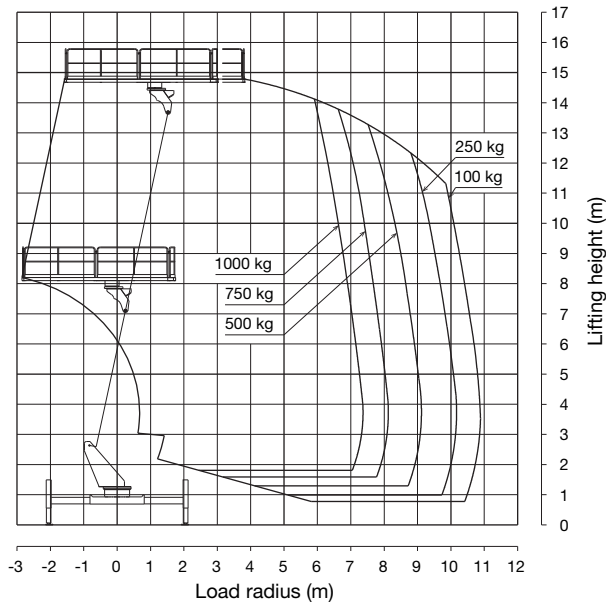
SPECIFICATIONS

MAX. PLATFORM HEIGHT	14.8 m
Platform EQUIPMENT	
Outside dimensions	4.6 m x 1.94 m x 1.01 m (L x W x D)
Capacity	1000 kg
Automatic leveling system	By hydraulic cylinders.
Slewing speed	1.0 min ⁻¹
BOOM	3-section full power synchronized telescoping boom of box construction. The synchronization system consists of a double-acting hydraulic cylinder, an extension cable and a retraction cable. Hydraulic cylinder fitted with a holding valve and a pilot check valve.
Fully retracted length	4.60 m
Fully extended length	11.30 m
Extension speed	6.70 m in 42 s
ELEVATION	By a double-acting hydraulic cylinder, fitted with a holding valve.
Elevation speed	-17° to 79° in 46 s
SLEWING	Hydraulic motor driven through worm reduction gear. 360° continuous in either direction on ball bearing slew ring.
Slewing speed	1.0 min ⁻¹ {rpm}
HYDRAULIC SYSTEM	
Pumps	Gear pump.
Control valves	Multiple hydraulic-control valves actuated by switch with integral relief valves, on slewing frame. And electric remote control from platform.
Hydraulic oil tank capacity	Approx. 110 L
Filter	Return line filter

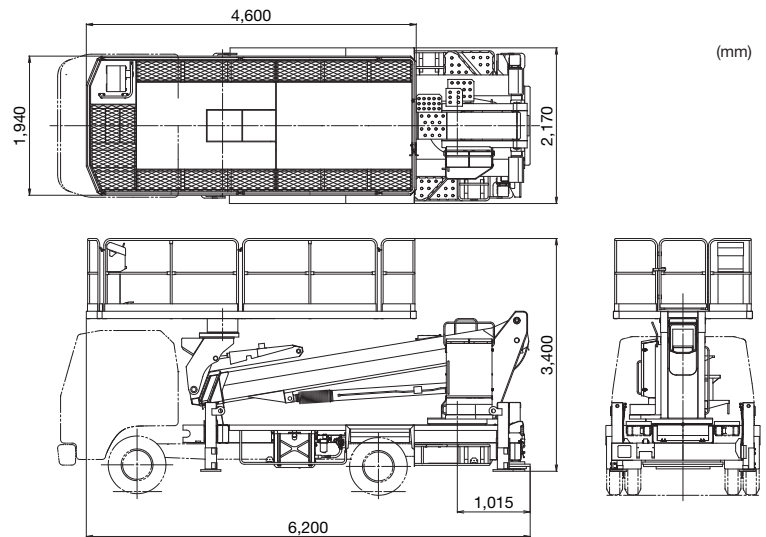
OUTRIGGERS	4 hydraulically operated outriggers. Each outrigger controlled simultaneously or independently from rear side of carrier. Equipped with sight level gauge. Floats mounted integrally with the jacks and retract to within vehicle width. All cylinders fitted with pilot check valves.
Fully extended width	4.1 m
SAFETY DEVICES	<ul style="list-style-type: none"> • Automatic moment limiter (AMC) • Voice alarm • Boom interference prevention device with undercarriage • Platform interference prevention device with boom • Automatic speed control system on boom elevation, and slewing • Automatic speed reduction and slow stop function on boom elevation, slewing, telescoping and platform slewing • Foot switch (in platform) • Control lever guards • Emergency pump • Emergency stop system • Parking brake alarm • PTO connect alarm (when drive) • Jack interlock • Boom interlock • Outrigger indicator • Hydraulic cylinder lock valves • Hydraulic safety valves • Level gauge
ACCESSORIES	<ul style="list-style-type: none"> • Hour meter • Rubber blocks (for outriggers) • Chocks • Safety belt • Grease pump
OPTIONAL EQUIPMENT	<ul style="list-style-type: none"> • Work light (in platform) • Marker lamps (on outrigger jacks) • Wood block (for outriggers) • Tools • Limit warning lamp (three-color)

WORKING RANGE

Outriggers fully extended Working area : 360°
Platform loading capacity 1,000 kg



DIMENSIONS (Approx.)



NOTE: Working ranges shown are for a case where aerial platform is set on a firm and level ground, and do not include boom deflection.

NOTE: Some specifications are subject to change.



Tadano Ltd.

Kanda Square 18th Floor, 2-2-1 Kanda-Nishikicho,
Chiyoda-ku, Tokyo 101-0054, Japan
Phone: +81-3-6811-7309
www.tadano.com

Reaching new heights