

AS-69J

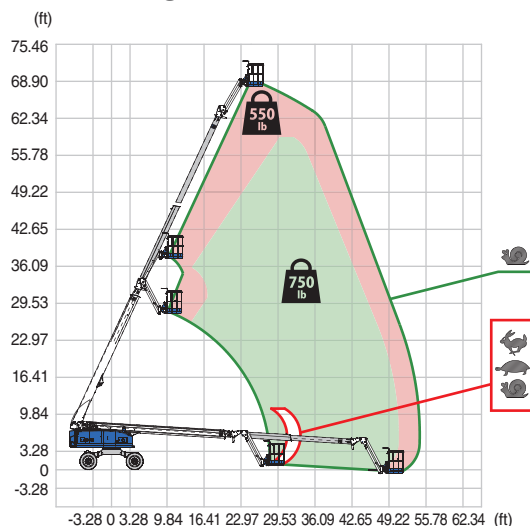
TELESCOPIC STICK BOOM

MODEL HIGHLIGHTS

- 360° turntable rotation
- Jib for added job-site access
- Dual lifting capacity
- Low emission engine
- 45% gradeability



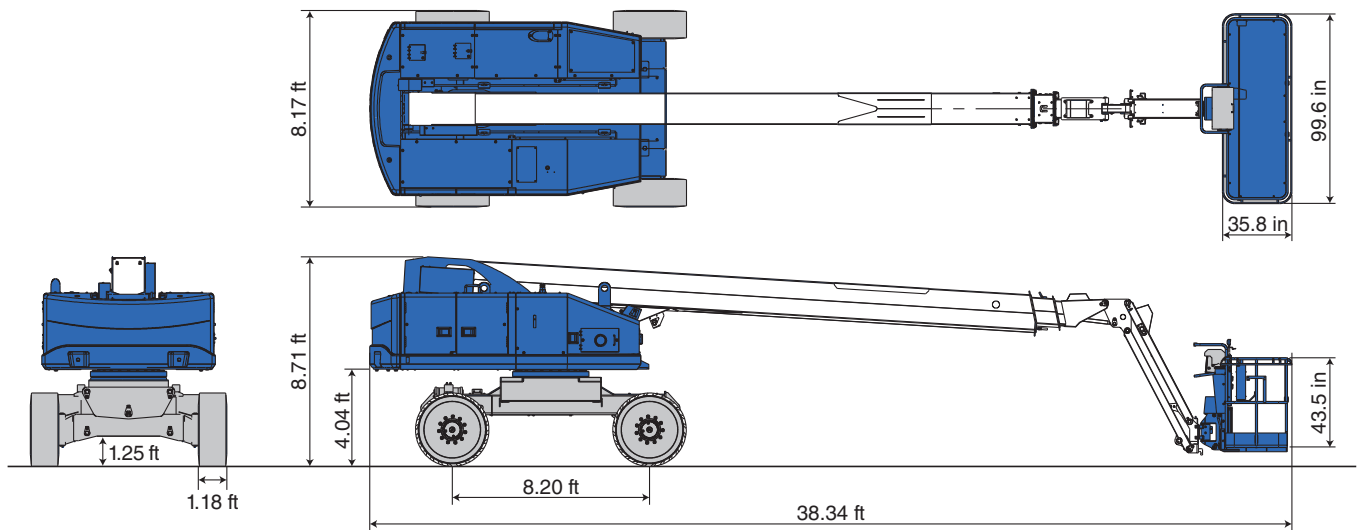
AS-69J Range of motion



Model	AS-69J
Max. platform capacity	750 lb / 550 lb
Platform size	8'3.6" x 2'11.8" x 3'7.3"
Max. work height	74'7"
Max. outreach	54'10"

Allows more workers, with more materials and tools, to be more productive!

Model		AS-69J	
SPECIFICATIONS		POWER SOURCE	
Max. work height	74'7"	Engine type	Kubota V2607
Max. platform height	68'7"	Rated power	49.2 HP / 2400 min ⁻¹
Max. outreach	54'10"	Fuel tank capacity	34.3 gal
Allowable tilt	5°	OPTIONS	
Max. platform capacity	750 lb / 550 lb	6 ft platform	6'4.8" x 2'11.8" x 3'7.3"
Platform size (L x W x H)		Generator	Available soon
8 ft	8'3.6" x 2'11.8" x 3'7.3"	LED lighting	
6 ft	6'4.8" x 2'11.8" x 3'7.3"	SAFETY DEVICES	
Platform rotation	180°	Emergency stop	✓
Transport dims (L x W x H)	38'4" x 8'2" x 8'9"	Foot switch / Enabling switch	✓
Machine weight	36,630 lb	Slew lock pin	✓
AC outlet to platform (120 V)		Auxiliary lowering control	✓
TRAVEL		Traveling restriction (on slope)	✓
Max. travel speed	2.98 mph	Operation restriction (on slope)	✓
Max. gradeability	45%	Overload sensing system	✓
		Battery isolator switch	✓



For all our types:



March 2025. Unless otherwise specified, all information in this brochure refers to a standard equipment, and it is intended as general information only. No liability is assumed. Errors reserved. Product specifications and prices are subject to changes without notice. The photographs and/or drawings in this brochure are for illustrative purposes only. For correct and safe operation, the original operating manual and lifting capacity charts are essential. Failure to follow the corresponding Operator's Manual when using our equipment or failure to otherwise act responsibly may result in property damage, serious injury or death. The sole warranty applicable with respect to our equipment is the standard warranty as per general terms and conditions of sales and service (ask your local Tadano dealer for details), and Tadano makes no other warranty, express or implied. All rights reserved. Any use of the trademarks, logos, brand names and model names used herein is prohibited.

© Tadano Ltd. 2025

Tadano Ltd.

Kanda Square 18th Floor, 2-2-1 Kanda-Nishikicho, Chiyoda-ku, Tokyo 101-0054, Japan
Phone: +81-3-6811-7309 (International Division)

Tadano America Corporation

4242 West Greens Road, Houston, TX 77066, Phone: +1 (281) 869-00300 · Fax: +1 (281) 869-0040

tac.sales@tadano.com
www.tadano.com

