

# AS-58C

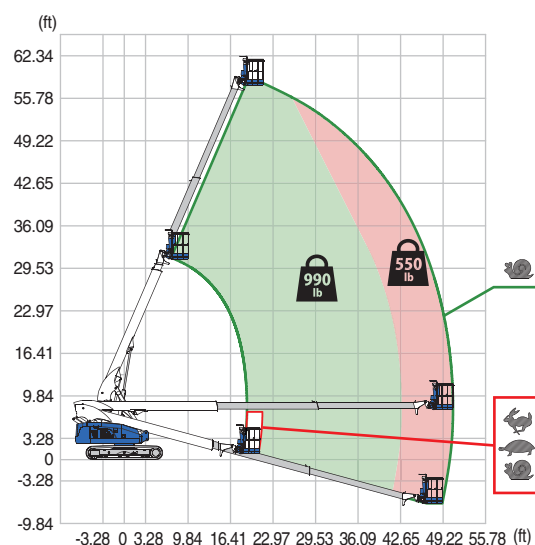
## TELESCOPIC CRAWLER BOOM

### MODEL HIGHLIGHTS

- 360° turntable rotation
- Dual lifting capacity
- Low emission engine
- Low ground pressure
- Steel tracks with non-marking pads



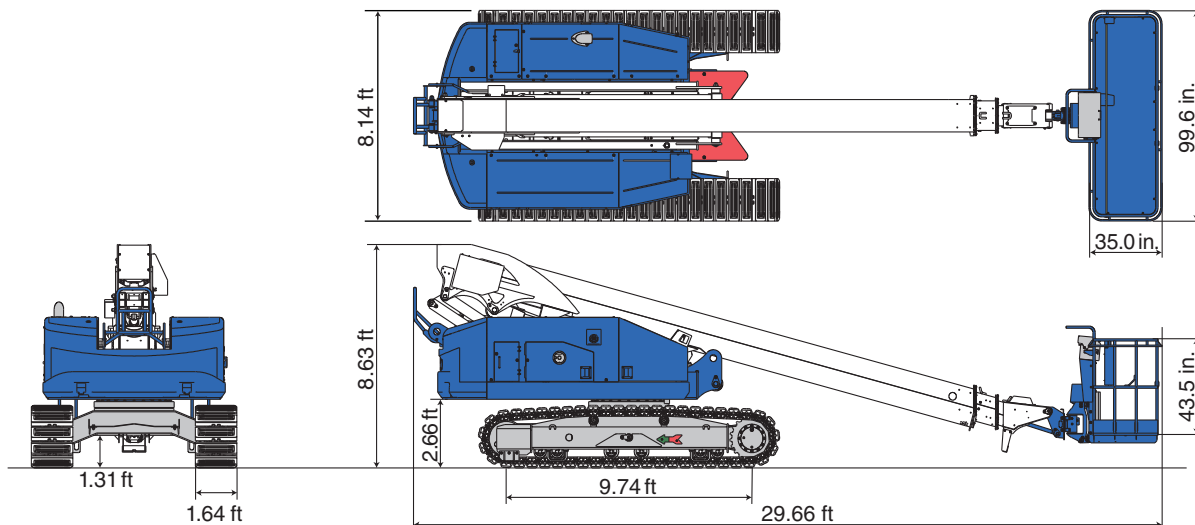
**AS-58C Range of motion**



Model	AS-58C
Max. platform capacity	990 lb / 550 lb
Platform size	8'3.6" x 2'11" x 3'7.3"
Max. work height	64'1"
Max. outreach	50'6"

**Allows more workers, with more materials  
and tools, to be more productive!**  
**We Know Crawlers!**

Model		AS-58C
SPECIFICATIONS		
Max. work height	64'1"	
Max. platform height	58'1"	
Max. outreach	50'6"	
Allowable tilt	5°	
Max. platform capacity	990 lb / 550 lb	
Platform size (L x W x H)		
8 ft	8'3.6" x 2'11" x 3'7.3"	
6 ft	6'4.8" x 2'11" x 3'7.3"	
Platform rotation	180°	
Transport dims (L x W x H)	29'8" x 8'2" x 8'8"	
Machine weight	25,460 lb	
AC outlet to platform (120 V)		
TRAVEL		
Max. travel speed	2.05 mph	
Travel position ground pressure	5.8 psi	
Max. gradeability	57 %	
POWER SOURCE		
Engine type	Kubota D1803	
Rated power	32.0 HP / 2400 min <sup>-1</sup>	
Fuel tank capacity	34.3 gal	
OPTIONS		
6 ft platform	6'4.8" x 2'11" x 3'7.3"	
Generator	Available soon	
LED lighting		
SAFETY DEVICES		
Emergency stop	✓	
Foot switch / Enabling switch	✓	
Slew lock pin	✓	
Auxiliary lowering control	✓	
Traveling restriction (on slope)	✓	
Operation restriction (on slope)	✓	
Overload sensing system	✓	
Battery isolator switch	✓	



#### For all our types:



March 2025. Unless otherwise specified, all information in this brochure refers to a standard equipment, and it is intended as general information only. No liability is assumed. Errors reserved. Product specifications and prices are subject to changes without notice. The photographs and/or drawings in this brochure are for illustrative purposes only. For correct and safe operation, the original operating manual and lifting capacity charts are essential. Failure to follow the corresponding Operator's Manual when using our equipment or failure to otherwise act responsibly may result in property damage, serious injury or death. The sole warranty applicable with respect to our equipment is the standard warranty as per general terms and conditions of sales and service (ask your local Tadano dealer for details), and Tadano makes no other warranty, express or implied. All rights reserved. Any use of the trademarks, logos, brand names and model names used herein is prohibited.

© Tadano Ltd. 2025

#### Tadano Ltd.

Kanda Square 18th Floor, 2-2-1 Kanda-Nishikicho, Chiyoda-ku, Tokyo 101-0054, Japan  
Phone: +81-3-6811-7309 (International Division)

#### Tadano America Corporation

4242 West Greens Road, Houston, TX 77066, Phone: +1 (281) 869-00300 · Fax: +1 (281) 869-0040

tac.sales@tadano.com  
www.tadano.com

