

# PM 38525 SP

elevate to the highest power

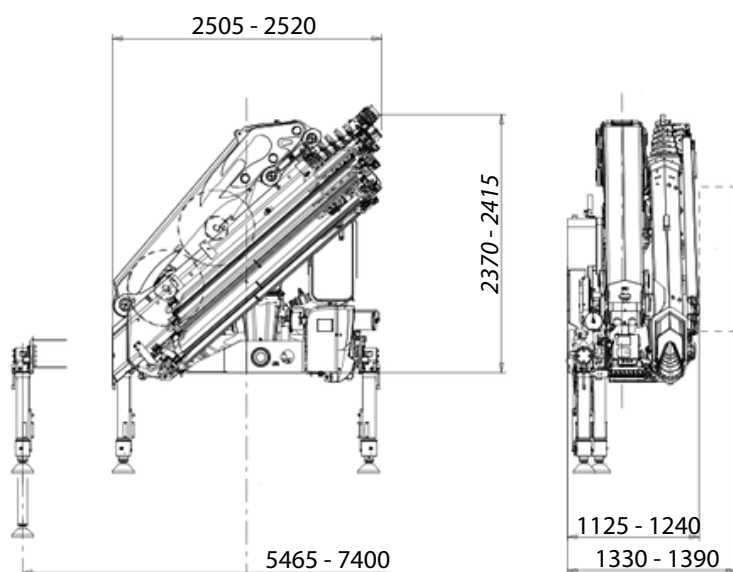


The structural characteristics of this model guarantee maximum reliability and durability, even with heavy duty use, thanks to a robust slewing system with rack and pinion.

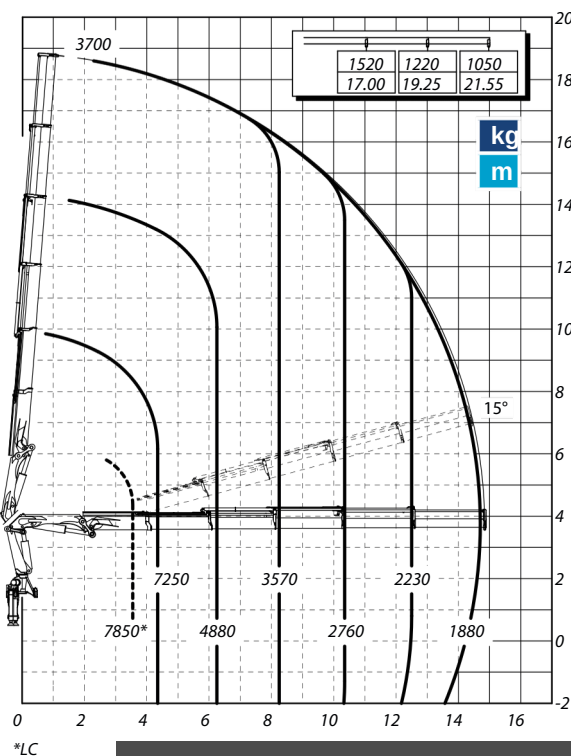
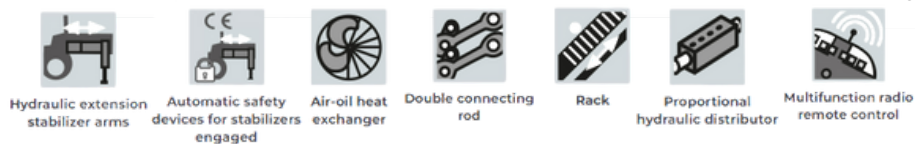
MAXIMUM LIFTING MOMENT	31,5 TM
HYDRAULIC OUTREACH	
Horizontal	14,85 m
Vertical	18,75 m
HYDRAULIC SYSTEM	
Recommended oil flow	80 l/min
Max. pressure	32MPa
Tank capacity	150 l
SLEWING SYSTEM	
Slewing angle	410°
Slewing torque	44,0 kNm
STABILISATION	
Spread available	5,5 - 6,6 - 7,4 m
Interlock available	3 - 4 - 5
Stabiliser control	Radio Wireless
STANDARD CRANE WEIGHT	
With empty tank	3665 kg



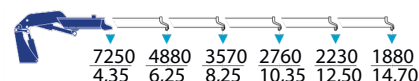
## DIMENSIONS



## STANDARD EQUIPMENT



## LIFTING CAPACITIES



\*All technical data, descriptions and illustrations are purely indicative and subject to change at PM Oil&Steel own discretion and without notice.



### Heavy-duty performance in a compact design.

The PM 38.5 SP delivers high power with reduced weight and dimensions; built tough for demanding jobs. Its robust rack-and-pinion rotation system ensures durability and reliability under heavy use. Advanced electronics give operators greater control, even remotely. Available with up to 8 hydraulic extensions and optional Fly Jib with up to 5 extensions and negative angles of 20° for added versatility.

#### OPTIONAL



Jib



Hydraulic winch on jib



Manual extensions



Manual flip-up outriggers



Hose reel



Hydraulic winch on crane



LMU CE control system for mechanical extensions



LC configuration



Hose racks



Tank



Electro-hydraulic slewing limiter



Slewing limitation with variable calibration