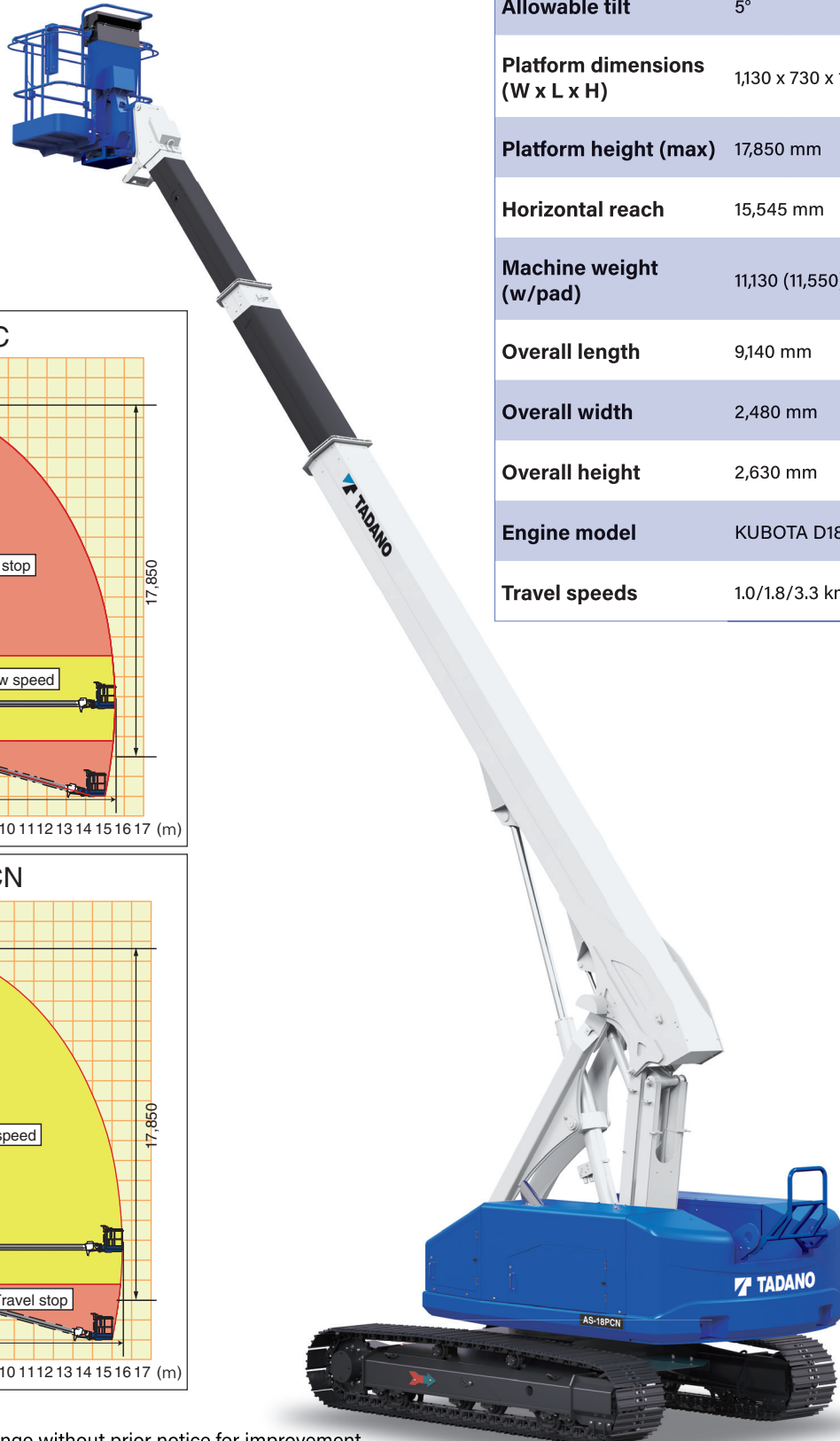
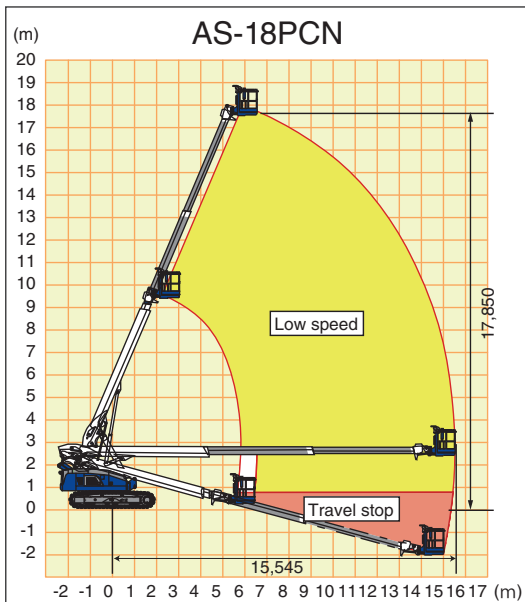
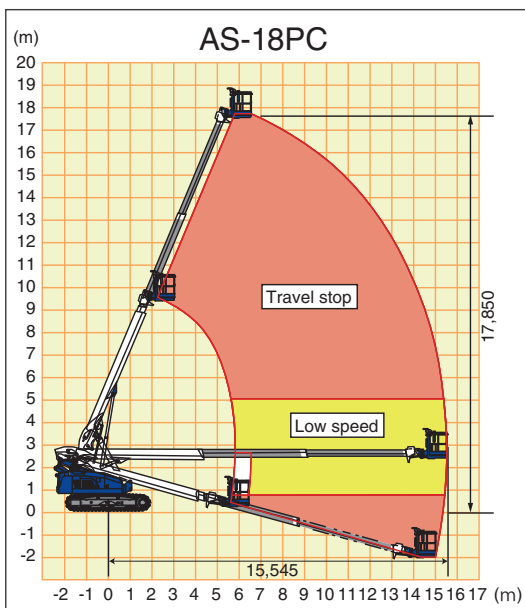


AS-18PC/AS-18PCN (NUS18-7/NUS18N-7)

Crawler type
Telescopic boom lift

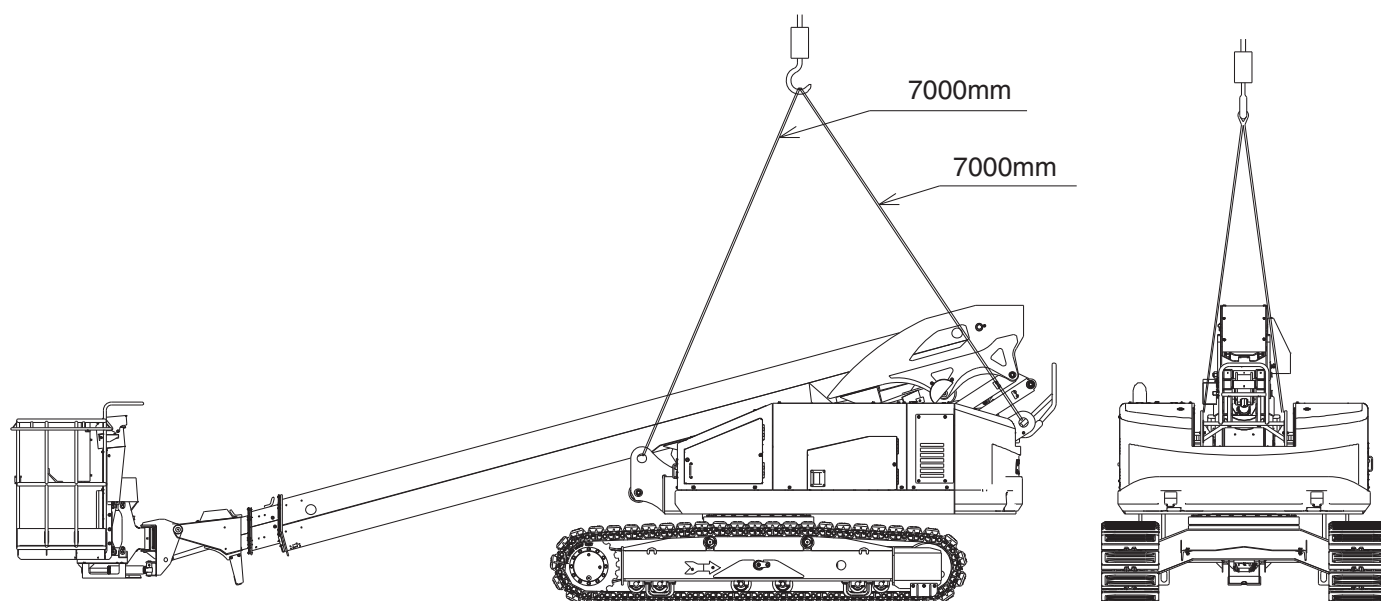


TYPE	AS-18PC/AS-18PCN
Platform capacity	250 kg
Allowable tilt	5°
Platform dimensions (W x L x H)	1,130 x 730 x 1,000 mm
Platform height (max)	17,850 mm
Horizontal reach	15,545 mm
Machine weight (w/pad)	11,130 (11,550) kg
Overall length	9,140 mm
Overall width	2,480 mm
Overall height	2,630 mm
Engine model	KUBOTA D1803
Travel speeds	1.0/1.8/3.3 km/h



Lifting the machine

- ⚠ Use only qualified rigging to hoist the machine.
- ⚠ Be sure that lifting devices and crane are sufficient to withstand the machine weight.
- Ensure the boom is in stowed position before lifting.
- Determine the center of gravity of the machine as shown below.
- Attach the rigging to designated lifting rings on the machine.
- Insert protective materials where rigging may interfere with the machine.



Tadano Ltd.

Kanda Square 18th Floor, 2-2-1 Kanda-Nishikicho, Chiyoda-ku, Tokyo 101-0054, Japan

Phone: +81-3-6811-7309

info@tadano.com

www.tadano.com