

PM 8523 P

elevate to the highest power

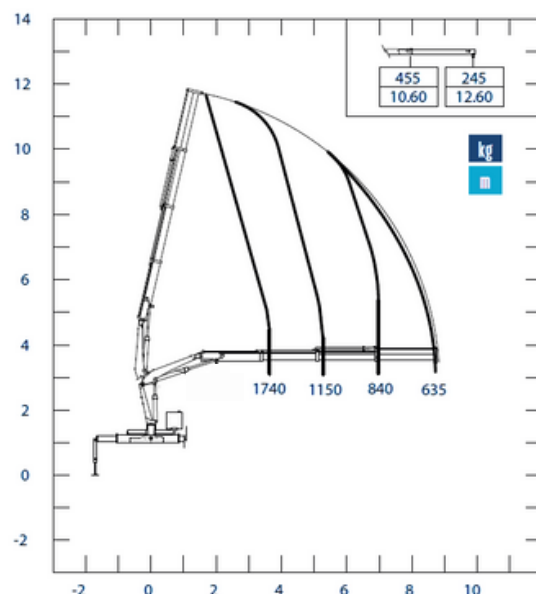
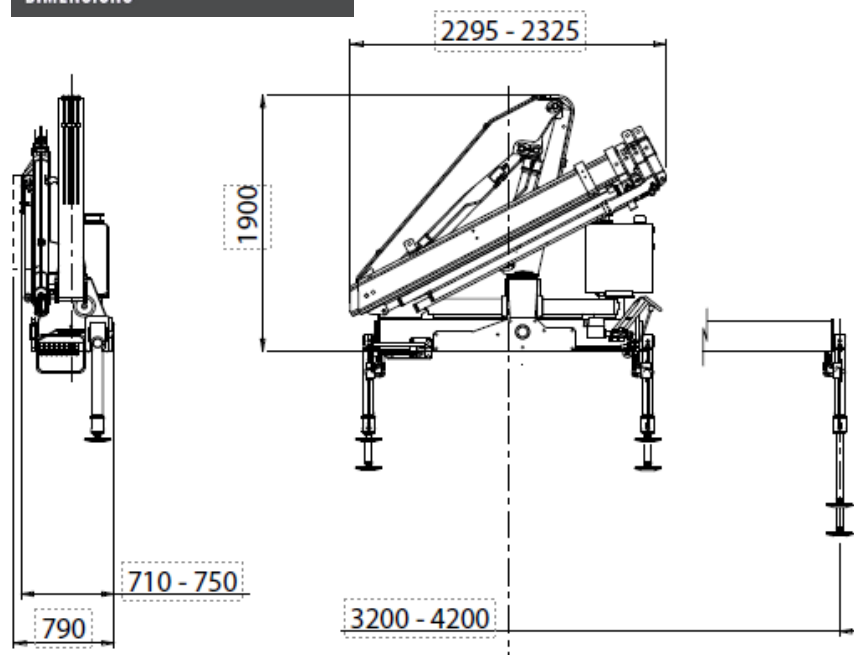
The **8.5P** delivers powerful lifting performance without the weight, thanks to its load-sensing proportional controls and high-efficiency Plus system. Operators benefit from safer, more stable lifts with the standard Type 2 Interlock Stability System and overload protection.



MAXIMUM LIFTING MOMENT	6,3 TM
HYDRAULIC OUTREACH	
Horizontal	8,85 m
Vertical	11,70 m
HYDRAULIC SYSTEM	
Recommended oil flow	30 l/min
Max. pressure	28 MPa
Tank capacity	64 l
SLEWING SYSTEM	
Slewing angle	400°
Slewing torque	10,0 kNm
STABILISATION	
Spread available	3,2 - 4,2 m
Interlock available	1 - 2
Stabiliser control	Manual
STANDARD CRANE WEIGHT	
With empty tank	1000 kg



DIMENSIONS



STANDARD EQUIPMENT



Manual extension stabilizer arms



Automatic safety devices for stabilizers engaged



Sequential arm extension output

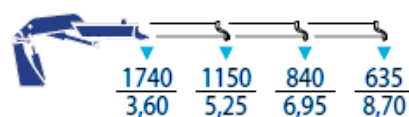


Rack



Manual rotary stabilizer jacks

LIFTING CAPACITIES



*All technical data, descriptions and illustrations are purely indicative and subject to change at PM Oil&Steel own discretion and without notice.



Compact power with advanced control.

The 8.5P comes standard with a proportional hydraulic distributor, multifunction radio remote, and the high-performance Plus system. Despite its low weight, it delivers impressive lifting capacity with reach up to 10.65 m horizontally and 13.50 m vertically via four hydraulic extensions, and up to 12.60 m horizontally and 15.45 m vertically with manual extensions. Safety features include a moment limiter and a Type 2 Interlock Stability System. An LC version is also available, featuring a retractable first boom for easier handling in tight spaces.

OPTIONAL



Hose racks



Air/oil heat exchanger



Tank



Manual extensions



LMU CE control system for mechanical extensions



Electro-hydraulic slewing limiter



LC configuration



4mt alarm sensor