

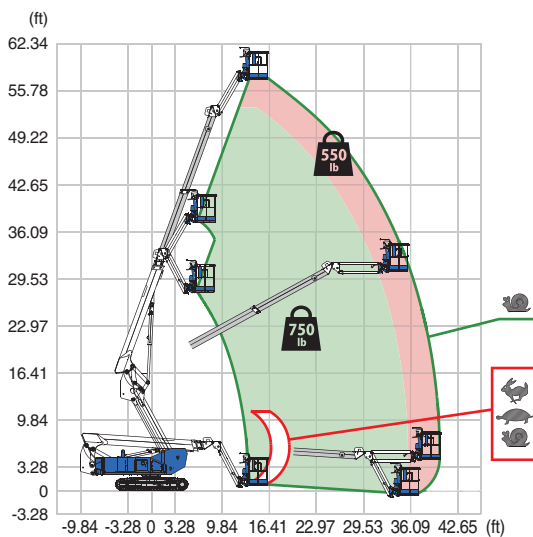
AS-58CJ

TELESCOPIC CRAWLER BOOM

MODEL HIGHLIGHTS

- 360° turntable rotation
- Jib for added job-site access
- Dual lifting capacity
- Low emission engine
- Low ground pressure
- Steel tracks with non-marking pads

AS-58CJ Range of motion



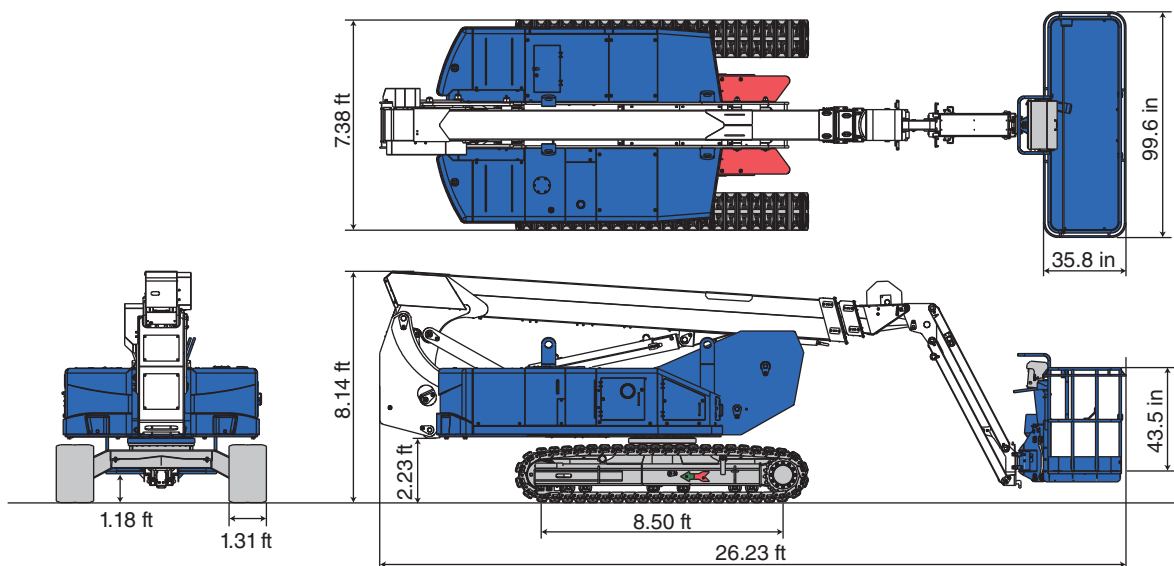
Model	AS-58CJ
Max. platform capacity	750 lb / 550 lb
Platform size	8'3.6" x 2'11.8" x 3'7.3"
Max. work height	63'9"
Max. outreach	40'2"

Allows more workers, with more materials and tools, to be more productive!

We Know Crawlers!



Model		AS-58CJ	
SPECIFICATIONS		POWER SOURCE	
Max. work height	63'9"	Engine type	Kubota D1305
Max. platform height	57'9"	Rated power	23.5 HP / 2400 min ⁻¹
Max. outreach	40'2"	Fuel tank capacity	35.1 gal
Allowable tilt	5°		
Max. platform capacity	750 lb / 550 lb		
Platform size (L x W x H)		OPTIONS	
8 ft	8'3.6" x 2'11.8" x 3'7.3"	6 ft platform	6'4.8" x 2'11.8" x 3'7.3"
6 ft	6'4.8" x 2'11.8" x 3'7.3"	Generator	Available soon
Platform rotation	180°	LED lighting	
Transport dims (L x W x H)	26'3" x 7'5" x 8'1.6"		
Machine weight	21,385 lb	SAFETY DEVICES	
AC outlet to platform (120 V)		Emergency stop	✓
		Foot switch / Enabling switch	✓
		Auxiliary lowering control	✓
		Traveling restriction (on slope)	✓
		Operation restriction (on slope)	✓
		Overload sensing system	✓
		Battery isolator switch	✓
TRAVEL			
Max. travel speed	1.68 mph		
Travel position ground pressure	6.86 psi		
Max. gradeability	36%		



For all our types:



March 2025. Unless otherwise specified, all information in this brochure refers to a standard equipment, and it is intended as general information only. No liability is assumed. Errors reserved. Product specifications and prices are subject to changes without notice. The photographs and/or drawings in this brochure are for illustrative purposes only. For correct and safe operation, the original operating manual and lifting capacity charts are essential. Failure to follow the corresponding Operator's Manual when using our equipment or failure to otherwise act responsibly may result in property damage, serious injury or death. The sole warranty applicable with respect to our equipment is the standard warranty as per general terms and conditions of sales and service (ask your local Tadano dealer for details), and Tadano makes no other warranty, express or implied. All rights reserved. Any use of the trademarks, logos, brand names and model names used herein is prohibited.

© Tadano Ltd. 2025

Tadano Ltd.

Kanda Square 18th Floor, 2-2-1 Kanda-Nishikicho, Chiyoda-ku, Tokyo 101-0054, Japan
Phone: +81-3-6811-7309 (International Division)

Tadano America Corporation

4242 West Greens Road, Houston, TX 77066, Phone: +1 (281) 869-00300 · Fax: +1 (281) 869-0040

tac.sales@tadano.com
www.tadano.com

