

# AS-20MC

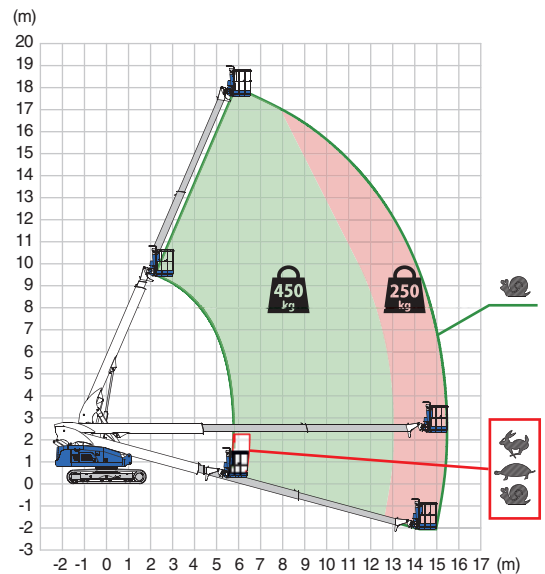
## TELESCOPIC CRAWLER BOOM

### MODEL HIGHLIGHTS

- Steel tracks with grey non-marking pads
- 360° continuous turntable rotation
- Dual lifting capacity
- Low emission engine
- Full range traveling
- Low ground pressure
- Auxiliary lowering control



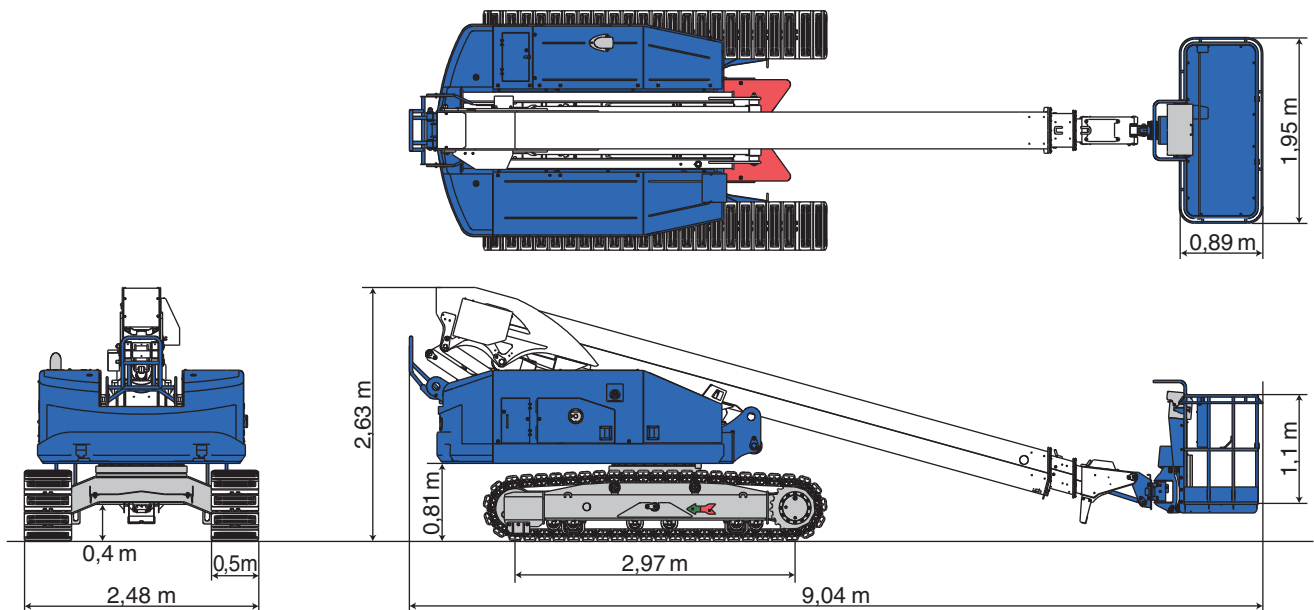
AS-20MC Range of motion



Model	AS-20MC
Max. platform capacity	450 kg / 250 kg
Platform size	1,95 x 0,89 x 1,10 m
Max. work height	19,70 m
Max. outreach	15,40 m

When difficult areas need to be reached, the easy-to-store and versatile AS-20MC helps you reach up and around.

Model		AS-20MC	
<b>SPECIFICATIONS</b>		<b>POWER SOURCE</b>	
Max. work height	19,70 m	Engine type	Kubota D1803
Max. outreach	15,40 m	Rated power	23,9 kW / 2400 min <sup>-1</sup>
Allowable tilt	5°	Fuel tank capacity	130 l
Max. platform capacity	450 kg / 250 kg	<b>OPTIONS</b>	
Platform size (L x W x H)		8 ft platform	2,53 x 0,89 x 1,10 m
6 ft	1,95 x 0,89 x 1,10 m	Generator	5 kW
8 ft	2,53 x 0,89 x 1,10 m	LED lighting	
Platform rotation	L90° ~ R90°	<b>SAFETY DEVICES</b>	
Transport dims (L x W x H)	9,04 x 2,48 x 2,63 m	Emergency stop	✓
Machine weight	11.550 kg	Foot switch / Enabling switch	✓
AC outlet to platform (230 V)		Slew lock pin	✓
<b>TRAVEL</b>		Auxiliary lowering control	✓
Max. travel speed	3,3 km/h	Traveling restriction (on slope)	✓
Max. ground pressure	132 kPa	Operation restriction (on slope)	✓
Travel position ground pressure	40 kPa	Overload sensing system	✓
Max. gradeability	57%	Battery isolator switch	✓



#### For all our types:



March 2025. Unless otherwise specified, all information in this brochure refers to a standard equipment, and it is intended as general information only. No liability is assumed. Errors reserved. Product specifications and prices are subject to changes without notice. The photographs and/or drawings in this brochure are for illustrative purposes only. For correct and safe operation, the original operating manual and lifting capacity charts are essential. Failure to follow the corresponding Operator's Manual when using our equipment or failure to otherwise act responsibly may result in property damage, serious injury or death. The sole warranty applicable with respect to our equipment is the standard warranty as per general terms and conditions of sales and service (ask your local Tadano dealer for details), and Tadano makes no other warranty, express or implied. All rights reserved. Any use of the trademarks, logos, brand names and model names used herein is prohibited.

© Tadano Ltd. 2025

#### Tadano Ltd.

Kanda Square 18th Floor, 2-2-1 Kanda-Nishikicho, Chiyoda-ku, Tokyo 101-0054, Japan  
Phone: +81-3-6811-7309 (International Division)

info@tadano.com

www.tadano.com

#### Tadano Europe Holdings GmbH

Dinglerstr. 24, 66482 Zweibrücken, Germany, Phone: +49 (0) 6332 83-0

