



# GLADLY TAKE ON THE HARD WORK.

**The new GR-Series in Europe.**



# NEXT- GENERATION RTS

Safety is the number one priority in the products we create at Tadano – but we go further. Tadano's next-generation rough terrain cranes deliver superior performance with an engine that meets the latest emission standards, while also facilitating even more efficient workflows, promoting work safety and providing exceptional comfort. Featuring a redesigned cab that enhances operability and visibility, the Tadano GR-1000EX-4, GR-900EX-4, and GR-700EX-4 rough terrain cranes offer an unparalleled operator experience. Tadano has delivered on safety, quality and efficiency for more than 100 years. This is reflected in the confidence our customers place in us as we adapt each crane to the evolving needs of their businesses. Our next generation of rough terrain cranes keeps true to this tradition. Experience the new rough terrain cranes - the pride of Tadano.

Photo: GR-1000EX-4  
(optional model)

# TABLE OF CONTENTS

## CRANE

Ultimate Boom for Rough Terrain Crane   New Superstructure Frame	06
Winch Drum Camera   Catwalk for Easy Cab Access	07
Improved Cab Accessibility   Tilttable Cab	
Bi-Fold Jib   Assist Cylinder for Jib	08
Telescoping Modes 1 & 2   Two Winches with Cable Follower	
Optimized Cab	10
Automatic Moment Limiter [AML-E]   Large Multi-Function Display	11
Smart Counterweight	12
Smart Chart System	13

## CARRIER

Smooth Transmission   Travel Speed	14
High-Performance Engine   New Carrier Frame	
TADANO View System   Clearance Sonar	15
Improved Cab Accessibility   Four Steering Modes	
Dashboard Indicator and Warning Symbols	16
Traveling and Transportation	17
Reduced Fuel Consumption   HELLO-NET	18
HELLO-DATA LINK   Standard Equipment	19

Working Range & Dimensions	20
----------------------------	----

Service	23
---------	----



# INTRO



## GR-1000EX-4

**This best-in-class 51 m boom model expands the range of applications.**

**Crane capacity:** 100 t

**5-section boom:** 51.0 m

**Bi-fold jib with**

**2-stage extension:** 10.1 m / 17.7 m

**Overall length:** 15.185 m

**Overall width:** 3.315 m

**Overall height:** 3.805 m





# GR-900EX-4

**The successor for the 47 m boom standard model shines with improved lifting performance.**

**Crane capacity:** 90 t  
**5-section boom:** 47.0 m  
**Bi-fold jib with**  
**2-stage extension:** 10.1 m / 17.7 m  
**Overall length:** 14.375 m  
**Overall width:** 3.315 m  
**Overall height:** 3.805 m



# GR-700EX-4

**This low-weight model significantly enhances ease of transportation.**

**Crane capacity:** 70 t  
**5-section boom:** 47.0 m  
**Bi-fold jib with**  
**2-stage extension:** 10.1 m / 17.7 m  
**Overall length:** 14.375 m  
**Overall width:** 3.315 m  
**Overall height:** 3.805 m



Photo: Optional model



## Ultimate Boom for Rough Terrain Crane

The rounded boom is made of high tensile steel, which maximizes boom strength at a lower boom weight. In addition, the highperformance automatic moment limiter AML-E provides continuous control of the load.

### EXTRA-LONG BOOM AND SWIFT OPERATION

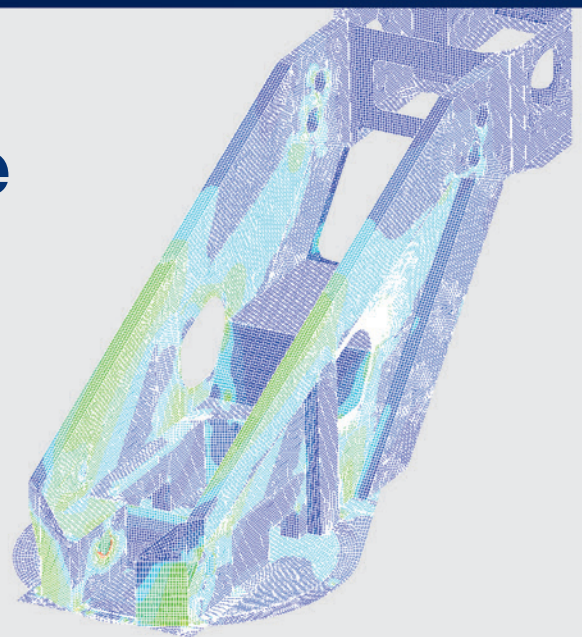
**Max. boom length:** **51.0 m** [GR-1000EX-4]  
**47.0 m** [GR-900EX-4]  
**47.0 m** [GR-700EX-4]

Telescoping mechanism: 2 hydraulic cylinders with wire ropes. The synchronized telescopic system facilitates fast operation. Two telescoping modes can be selected to flexibly adapt to the task.

## New Superstructure Frame

The crane structure is engineered to meet the requirements of tough everyday use. The design is supported by FEM\* analysis while keeping with Tadano's original concept of maintaining a compact and rigid slewing structure without deviating from the optimal overall height.

\*FEM: Finite Element Method





# New Design

Emergency Engine  
Stop Switch



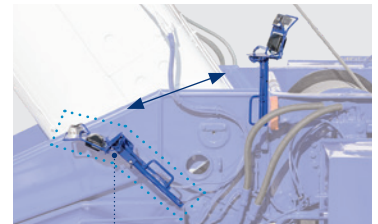
Rubber  
Floor Mat



Outrigger  
Control Panel



Winch Drum Camera



Stowed  
transport position

Two-Roll  
Sunshade



Adjustable in any position

Longer Wiper Blade

Flat Windshield

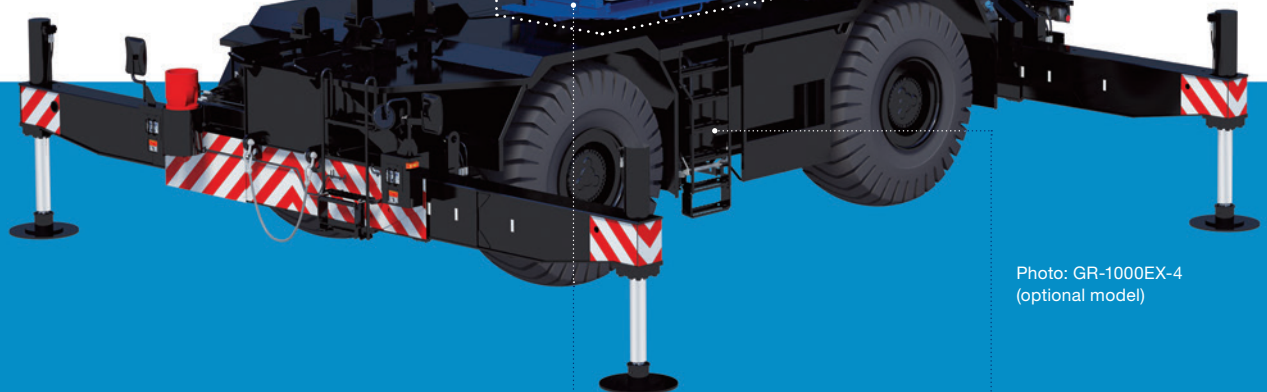


Photo: GR-1000EX-4  
(optional model)

Catwalk for Easy  
Cab Access



Improved Cab  
Accessibility



Newly designed stepladder  
\*Left side



Cab tilt indicator  
and switch

Tiltable Cab

Tilting the cab during high hoisting operations such as lifting with the jib enhances the operator experience. The available cab tilting angle ranges from 0° to 20°.





## BI-FOLD JIB

A two-stage, bi-fold lattice-type jib can be offset at 3.5°, 25°, and 45° to provide additional reach required.



### ASSIST CYLINDER FOR JIB

When mounting and stowing the jib, the hydraulic assist cylinders increase work efficiency.



## TELESCOPING MODES 1 & 2

The operator can choose between two boom telescoping options, enhancing capabilities for any lift.



### Mode 1

In Mode 1, only section 2 is extended initially. This is followed by a synchronized extension of sections 3, 4 and 5.



### Mode 2

In Mode 2, the synchronized extension of sections 3, 4 and 5 comes first. Section 2 then extends independently.

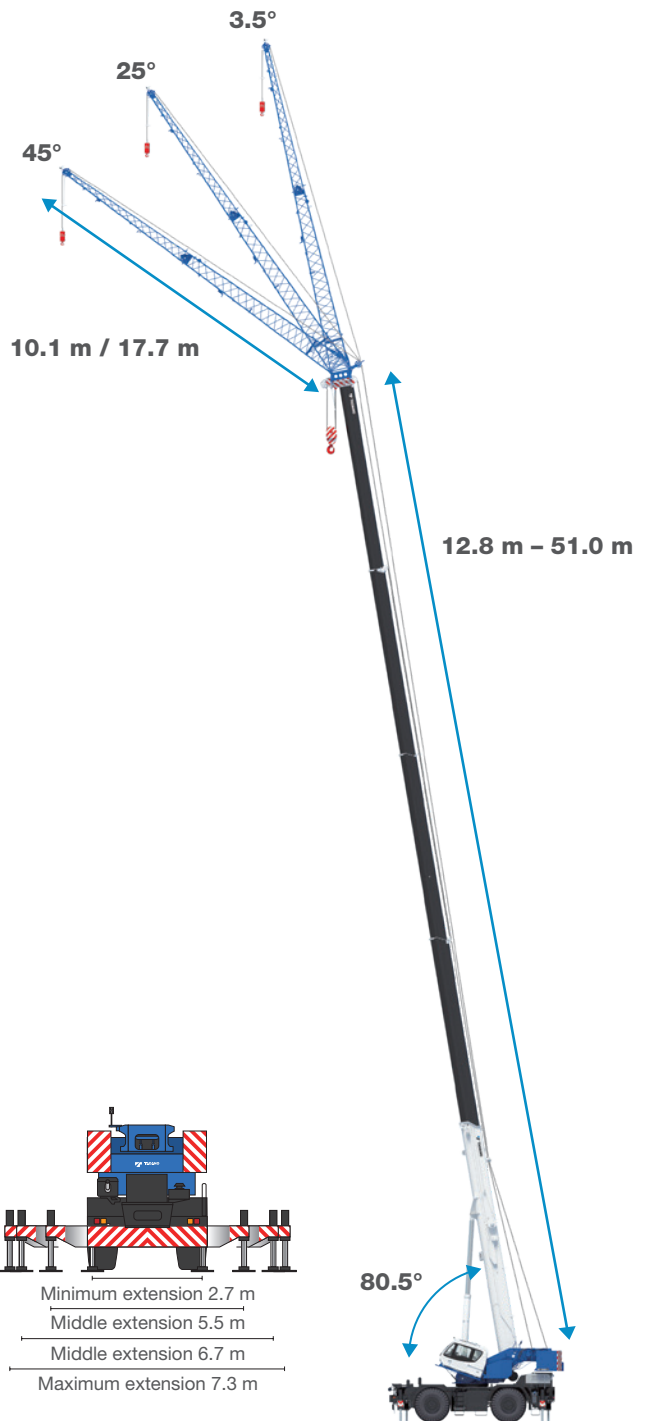
## TWO WINCHES WITH CABLE FOLLOWER

Both the main winch and the auxiliary winch boast a powerful line pull and operate at high speeds, enhancing work efficiency.



\*Maximum permissible line pull may be affected by wire rope strength.

# GR-1000EX-4



**Crane capacity:** 100 t

**5-section boom:** 51.0 m

**Bi-fold jib with 2-stage extension:** 10.1 m / 17.7 m

**Maximum lifting height:**

50.6 m [Boom]

68.3 m [Jib]

**Maximum load radius:**

42.0 m [Boom]

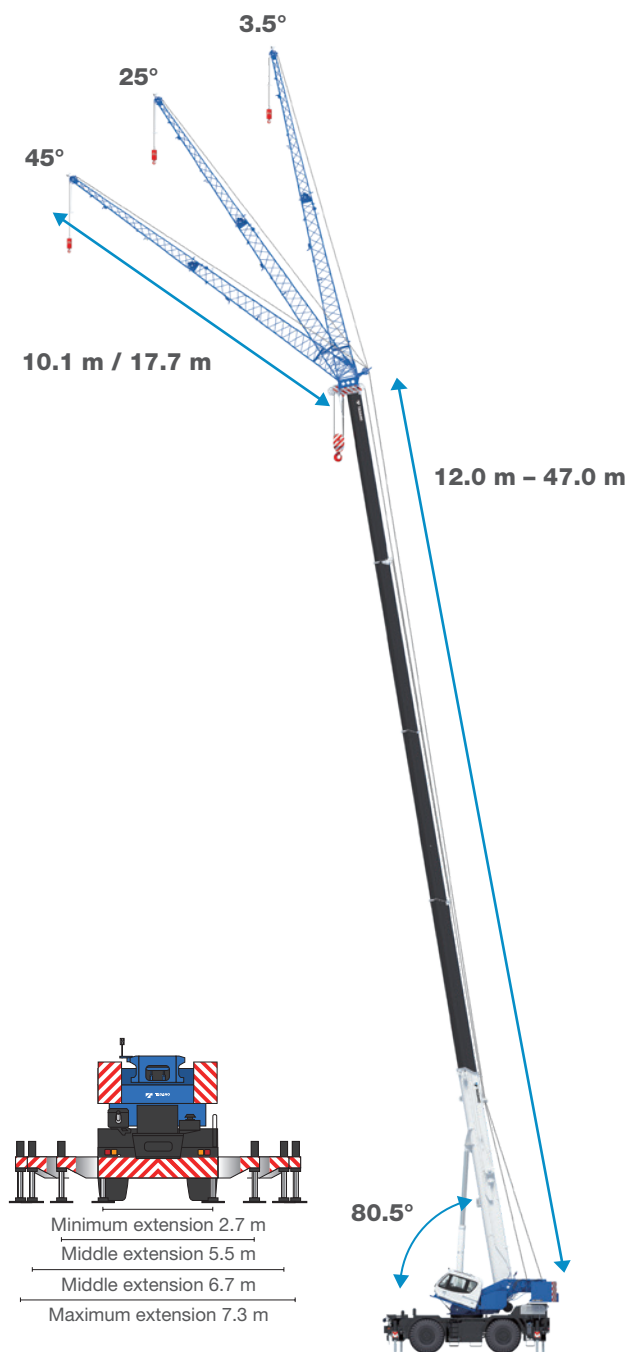
44.0 m [Boom] (Smart CW 2 + SMART CHART)

52.0 m [Jib]

54.0 m [Jib] (Smart CW 2 + SMART CHART)



# GR-900EX-4



**Crane capacity:** 90 t

**5-section boom:** 47.0 m

**Bi-fold jib with 2-stage extension:** 10.1 m / 17.7 m

**Maximum lifting height:**

47.1 m [Boom]

64.4 m [Jib]

**Maximum load radius:**

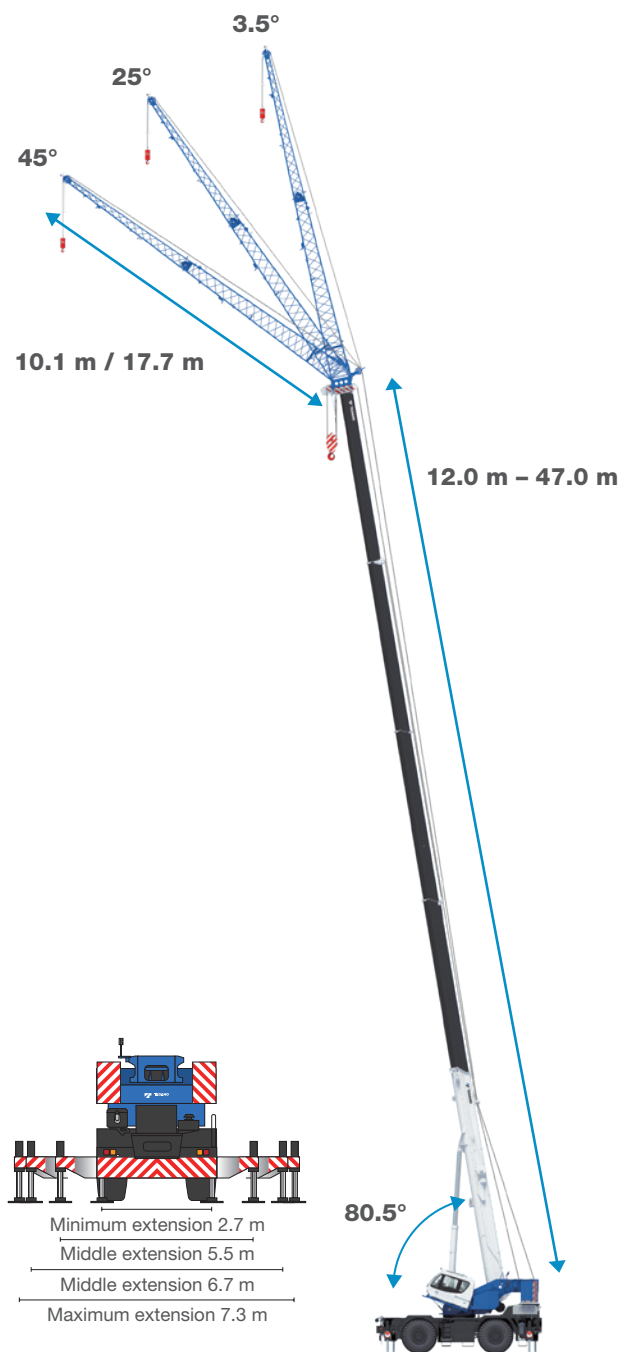
40.0 m [Boom]

42.0 m [Boom] (Smart CW 2 + SMART CHART)

50.0 m [Jib]

52.0 m [Jib] (Smart CW 2 + SMART CHART)

# GR-700EX-4



**Crane capacity:** 70 t

**5-section boom:** 47.0 m

**Bi-fold jib with 2-stage extension:** 10.1 m / 17.7 m

**Maximum lifting height:**

47.1 m [Boom]

64.4 m [Jib]

**Maximum load radius:**

36.0 m [Boom]

40.0 m [Boom] (SMART CHART)

44.0 m [Jib]

48.0 m [Jib] (SMART CHART)



# Optimized Cab

Crane cab and equipment are designed for comfort and operational efficiency.





# Automatic Moment Limiter [AML-E]

## LARGE MULTI-FUNCTION DISPLAY

The 10.4-inch color touch panel consolidates operation information and settings for greater work efficiency and comfort. The pressure sensitivity of the touch panel is geared towards gloved operation.

External warning light



Drum indicator

Outrigger status indicator

Slewing position

Load moment ratio

Number of parts of line for main winch wire rope

Number of parts of line for auxiliary winch wire rope



Hydraulic oil temperature indication

Fuel consumption monitor

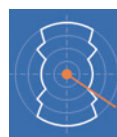
Operation indicator



Hook load

Rated lifting capacity

Working area



(Example)  
Working area when outriggers are asymmetrically extended

Winch drum monitoring camera



Operation status



Working area setting



## SEAT ADJUSTMENT

Multiple seat adjustment positions for ease of operation.

Armrest adjustment button

Slide adjustment lever



## MULTI-FUNCTION DISPLAY LUFFING SWITCH

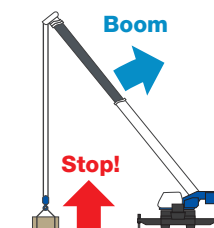
Convenient hand controls are available in addition to touchscreen operation.



## SAFETY CONTROL FOR BOOM LUFFING OPERATION

Prevents overload when the boom is raised to lift a load off the ground.

\*Release switch available for emergency operation



## ADJUSTMENT OF CONTROL LEVER STAND

- The control lever stand has a 3-stage adjustment feature.
- Before entering or exiting the cab and when a crane operation is complete, the control lever stand on the left should be set to stowing position.
- The unlock lever is pulled to adjust all positions of the control lever stand.

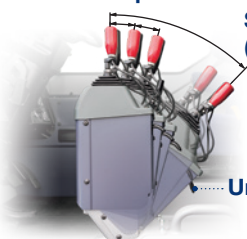


The control levers are smooth and responsive to the operator's touch.

Position for crane operation

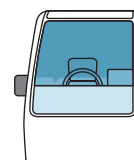
Stowing position (for traveling)

Unlock lever



## VISIBILITY

The shape and height of the instrument panel, as well as the angle of the windshield have been designed for optimum forward visibility.



New cab

# Smart Counterweight

## GR-1000EX-4/GR-900EX-4



### NEW SMART COUNTERWEIGHT SYSTEM

These rough terrain cranes are the first to feature Tadano's Smart Counterweight system.

The counterweight can be moved between two mounting positions, increasing lifting capacity by up to 20%.

#### Smart Counterweight 1 (Front position)



#### Smart Counterweight 2 (Rear position)



Hoist the counterweight and set it in either the front or rear position.



Slew the crane 180° and fully extend the counterweight cylinder.  
Connect the weight to the slewing table and retract the cylinder, fixing it in place.



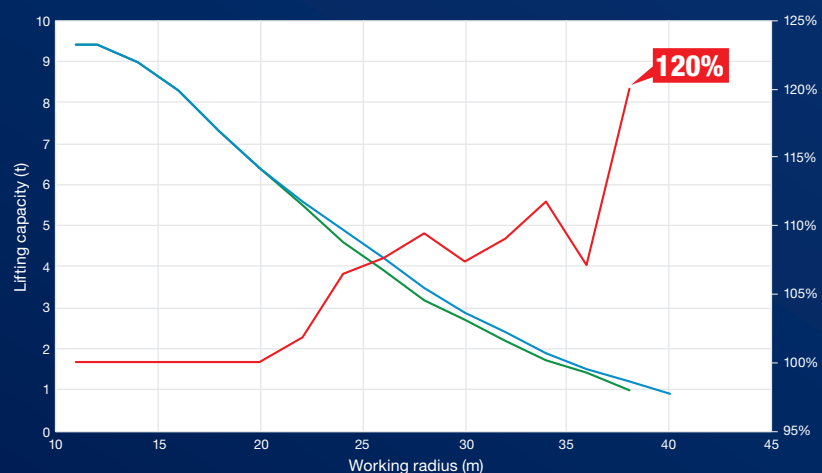
Tail Swing: 4.190 m



Tail Swing: 4.790 m

#### Comparison of Smart Counterweight 1 and 2 (51 m boom length)

GR-1000EX-4 : Smart Counterweight 2 —  
GR-1000EX-4 : Smart Counterweight 1 —  
Advantage: Rear position/Front position (%) —



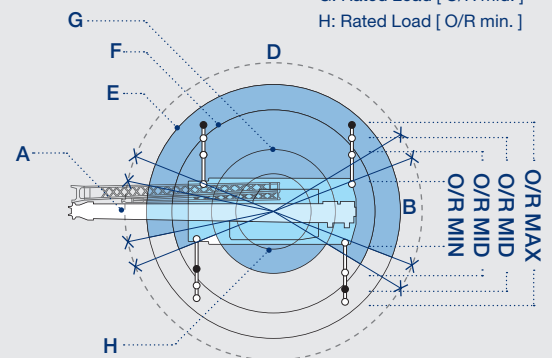
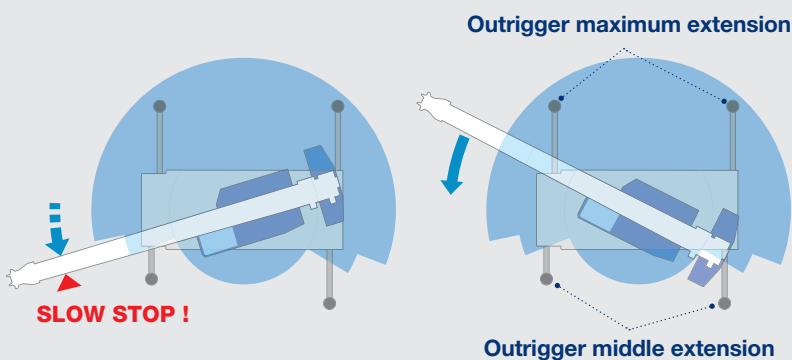


# Asymmetric Outrigger Extension Width Control

When operating the crane with an asymmetric outrigger extension, the AML-E detects the extension width of all the crane's outriggers (front, rear, left and right) to determine the maximum load capacity in each area. When the boom is slewed from a longer outrigger area to a shorter one, the AML-E detects the motion. It then displays the maximum capacity according to the extension width of each outrigger, and brings the motion to a slow stop before this maximum capacity is reached. The AML-E's slow stop function helps minimizing risks, even in the event of operator error.

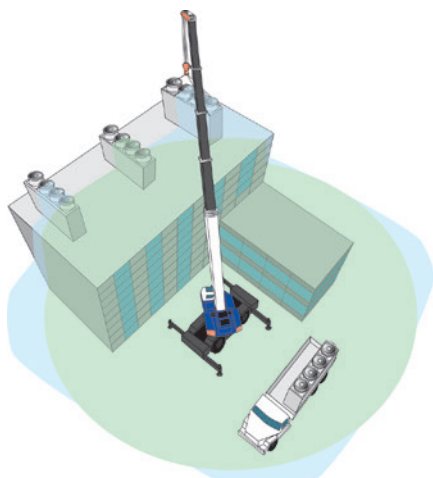
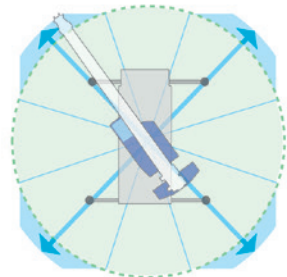


A: Over-front B: Over-rear  
C: Over-side D: Over-side  
E: Rated Load [ O/R max. ]  
F: Rated Load [ O/R mid. ]  
G: Rated Load [ O/R mid. ]  
H: Rated Load [ O/R min. ]



## Smart Chart System

Smart Chart expands the working area, allowing you to get the best crane performance in any outrigger extension setup.

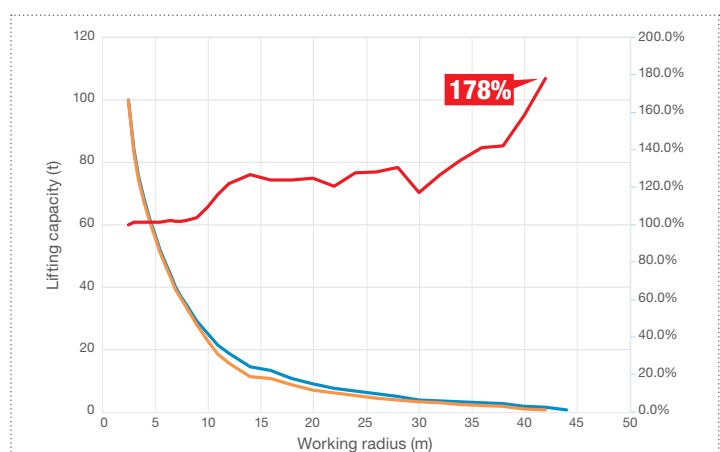


### UNDER MAXIMUM OUTRIGGER EXTENSION SETUPS

The Smart Chart boosts crane potential by expanding the conventional circular working area, improving efficiency.

#### Performance comparison graph (Smart Counterweight, Smart Chart)

- GR-1000EX-4 (O/R: fully extended, CW: 11.2 t, Smart Counterweight 2, Smart Chart)
- GR-1000EX-4 (O/R: fully extended, CW: 11.2 t, Smart Counterweight 1)
- Advantage: Smart Counterweight, Smart Chart/360°rotation (%)



# CARRIER

The GR-1000EX-4, GR-900EX-4 and GR-700EX-4 come with a compact width/height 2-axle carrier which offers improved maneuverability and a reduced footprint for ease of transportation.



TRAVEL SPEED: 18 km/h

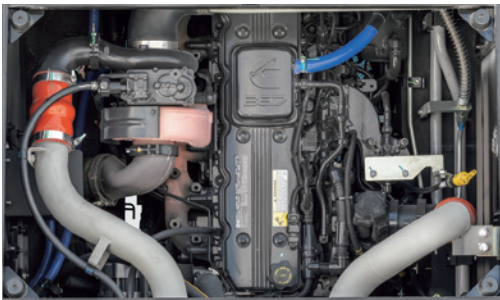
## SMOOTH TRANSMISSION

- Electronically controlled, fully automatic transmission
- Torque converter with full powershift driving axle selector
- 6 forward and 2 reverse speeds, constant mesh

3 speeds - High range - 2 wheel drive; 4 wheel drive

3 speeds - Low range - 4 wheel drive

Photo: GR-1000EX-4 (optional model)



## HIGH PERFORMANCE ENGINE

Cummins B6.7

4 cycle, turbo charged and after cooled.

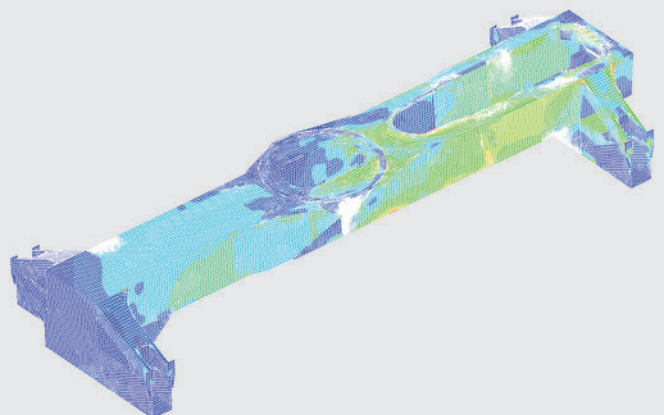
**Horse power kW (HP):** Gross 209 (280) at 2,200 min<sup>-1</sup>

**Max. torque Nm:** 1,152 at 1,500 min<sup>-1</sup>

## New Carrier Frame (GR-1000EX-4/GR-900EX-4)

The new carrier frame design is engineered to perfectly combine light weight and high rigidity to achieve superior performance. The resulting greater rigidity of the new crane model stabilizes crane maneuvers at a new level.

\*Compared with our conventional crane models





# TADANO View System

The view shown on the large multi-function display helps to significantly improve visibility.

\*Camera range is limited. Do not rely only on the image.  
Confirm clearance around the vehicle directly before driving.



Right front view monitor



Right front view camera



Right front and rear view monitor



Rear view camera



Rear view monitor

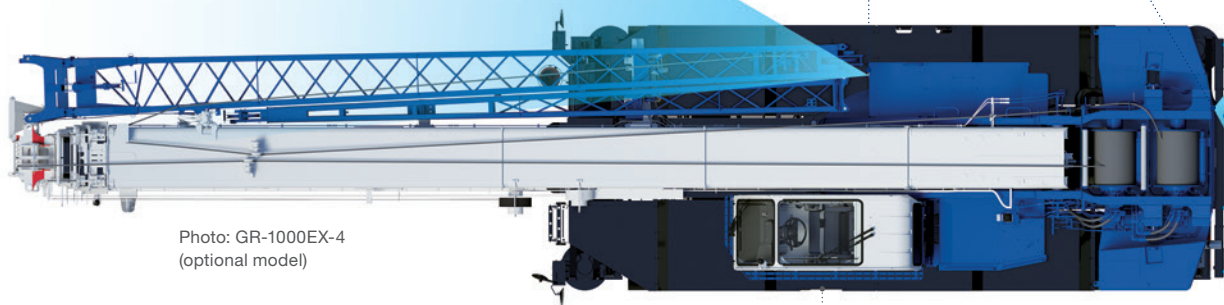


Photo: GR-1000EX-4  
(optional model)

## Improved Cab Accessibility



## Axle

- Front:** Full floating type, steering and driving axle with planetary reduction.
- Rear:** Full floating type, steering and driving axle with planetary reduction and non-spin rear differential.

## Clearance Sonar

Detects obstacles right behind the vehicle, issuing a warning with a flashing icon on the indicator and buzzer sound.

\*Detection distance: approx. 0.3 m – 2.6 m



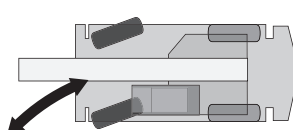
Clearance sonar monitor



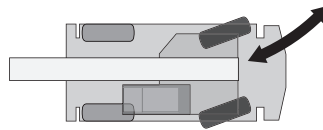
Clearance sonar

## Four Steering Modes

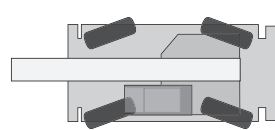
Hydraulic power steering controlled by steering wheel.



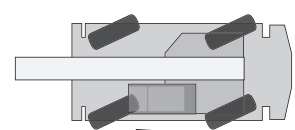
2 Wheel Front



2 Wheel Rear



4 Wheel Coordinated



4 Wheel Crab

# Dashboard Indicator and Warning Symbols



12 V power outlet



USB port

Air conditioner control panel

Large multi-function display



Transmission shift switch



Cup holder



# Traveling and Transportation



## GR-1000EX-4/GR-900EX-4

**COUNTERWEIGHT (Standard weight)**

**GR-1000EX-4:** 11,200 kg

**GR-900EX-4:** 9,100 kg



**GVW**

**GR-1000EX-4:** 43,990 kg

**GR-900EX-4:** 43,220 kg



## GR-700EX-4

**GVW**

**GR-700EX-4:** 44,730 kg



# Reduced Fuel Consumption

## FUEL MONITORING

Fuel consumption monitoring helps operators minimizing fuel consumption from unnecessary acceleration and idling.

The average fuel consumption is shown when your crane is in operation. Fuel consumption during standby is automatically displayed when each control lever and pedal is in neutral position.



Fuel consumption during standby



Average fuel consumption



Preset menu display (during crane operation)



Fuel consumption history display (during crane operation)



Fuel consumption history display (during travel)

## POSITIVE CONTROL SYSTEM

Effectively controls the quantity of hydraulic pump discharge during crane operation in response to the amount of movement applied, and reduces CO<sub>2</sub> emission.

## ECO MODE SYSTEM

Controls the maximum engine speed during crane operation allowing a decrease in fuel consumption and CO<sub>2</sub> emission by up to 28% with Eco mode 1, and up to 37% with Eco mode 2, while also reducing noise levels.

## AUTOMATIC PUMP DISCONNECT

When the automatic pump disconnect switch is set to ON and the crane is not in use for a set period of time, the crane's hydraulic pump automatically shuts off, helping to reduce fuel consumption. Three settings are available for the duration of crane standby before the pump shuts off: MIN, MID and MAX.



**MIN:** 1 minute



**MID:** 3 minutes



**MAX:** 5 minutes

Down max.  
**12%**

Fuel consumption CO<sub>2</sub> emissions

# HELLO-NET

HELLO-NET is a tool to connect crane operations with owners, their service staff and the manufacturer via satellite. This high-quality telematic tool is able to collect data of the crane including working history, maintenance data and machine location. The manufacturer can access HELLO-NET to assist with troubleshooting, and to provide Tadano support services.



## ONLINE TELEMATICS (machine data logging and monitoring system) WITH HELLO-NET (\*subject to availability).

DETAILS: The availability of data communication systems including satellite or mobile communications that expand the service area differs between countries and regions. The system is not yet available in all countries. Please contact your distributor or our local sales representatives for further details.

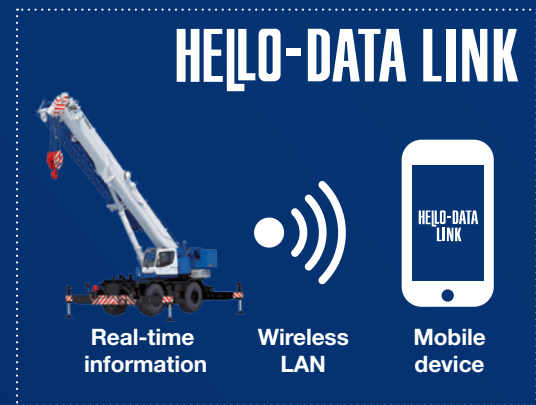


# HELLO-DATA LINK

## Smartphone App

HELLO-DATA LINK connects cranes to mobile devices by wireless LAN, allowing you to receive operating status, indications, error codes and other information in real-time from outside the cab.

HELLO-DATA LINK helps crane and site supervisors monitor the operating status, and stay up to date on repairs and maintenance.



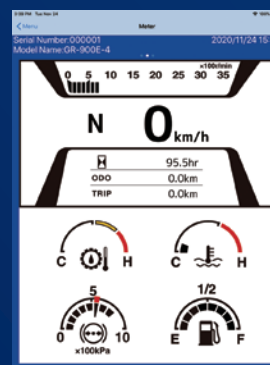
### THREE WORKING DISPLAYS

\*Available display modes and information may differ depending on machine model.

Display information from connected machines via mobile devices. Simply swipe to change screens.



Crane display



Meter display



Indicators display

## Standard Equipment



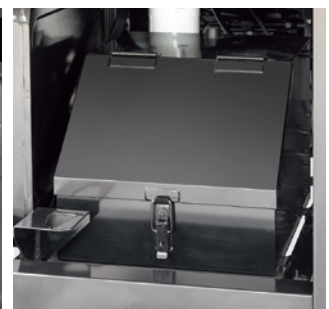
Front steps



Right side steps



Rear steps



Tool box



Battery Disconnect Switch



Work Light



DEF Tank



Anemometer

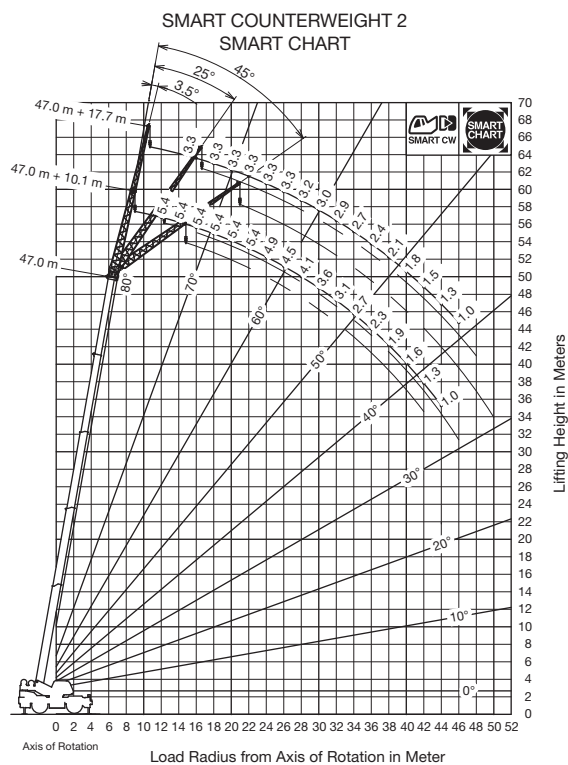
# GR-1000EX-4

## 20



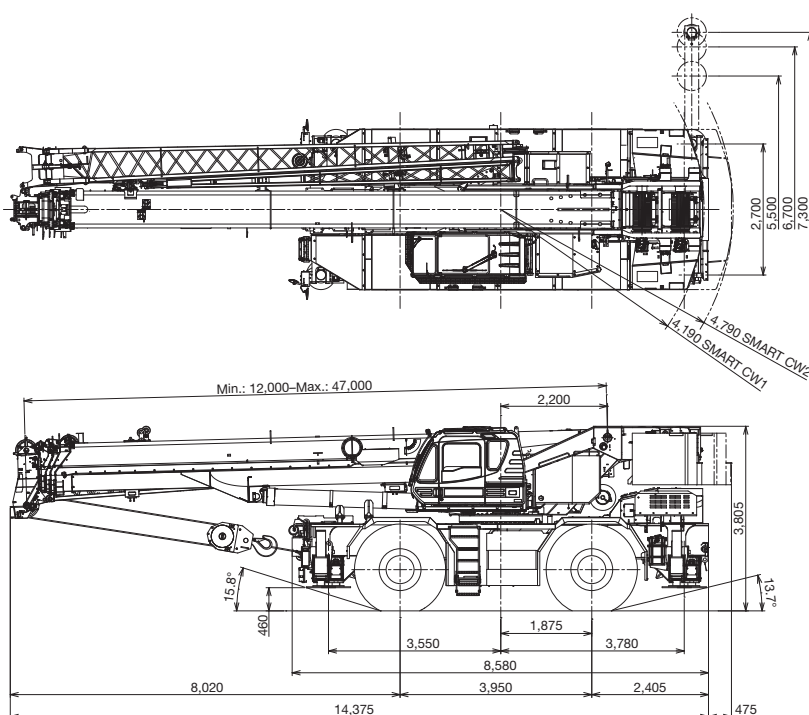
# GR-900EX-4

## WORKING RANGE



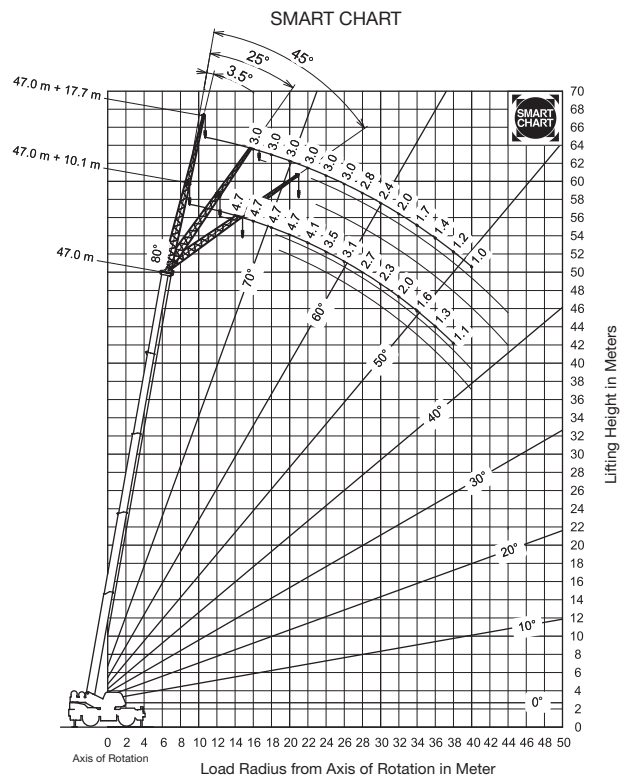
## DIMENSIONS

Note: Dimensions at a boom angle of -1.5°.  
(mm)



# GR-700EX-4

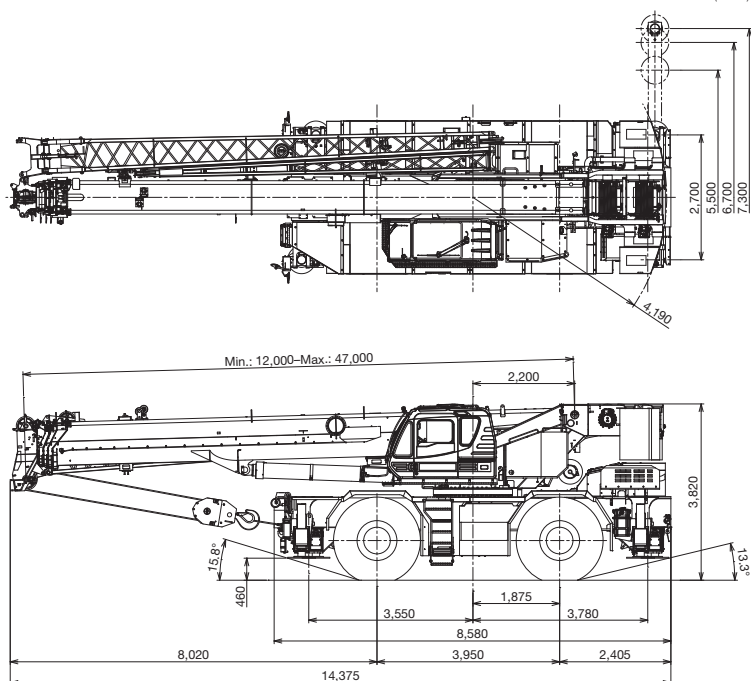
## WORKING RANGE



## DIMENSIONS

Note: Dimensions at a boom angle of  $-1.6^\circ$ .

(mm)





# No matter where you are: we're here for you.



**Our sales representatives, trained techs, and trusted partners ensure continuous, local availability of additional cranes, service, training, parts, and support.**

## **SALES**

Our experienced Sales team will find you the best crane for your project and provide information on the wide range of Tadano's additional services.

## **CUSTOMER SUPPORT**

Dedicated Tadano Customer Support Teams are cross-trained to keep all products safely running, including factory-trained service technicians and distribution channel technicians.

## **PARTS**

Our original spare parts for Tadano and Demag cranes help your company and your cranes to achieve top performance. We are here to support you with an excellent availability of spare parts and quick shipping.

## **TRAINING**

Tadano offers comprehensive training on our Tadano and Demag branded products to help you get the most from your equipment.

info@tadano.com  
www.tadano.com

**Tadano Ltd.**

Kanda Square 18th Floor, 2-2-1 Kanda-Nishikicho, Chiyoda-ku, Tokyo 101-0054, Japan  
Phone: +81-3-6811-7309 (International Division)

**Tadano Europe Holdings GmbH**

Dinglerstr. 24, 66482 Zweibrücken, Germany  
Phone: +49 (0) 6332 83-0

