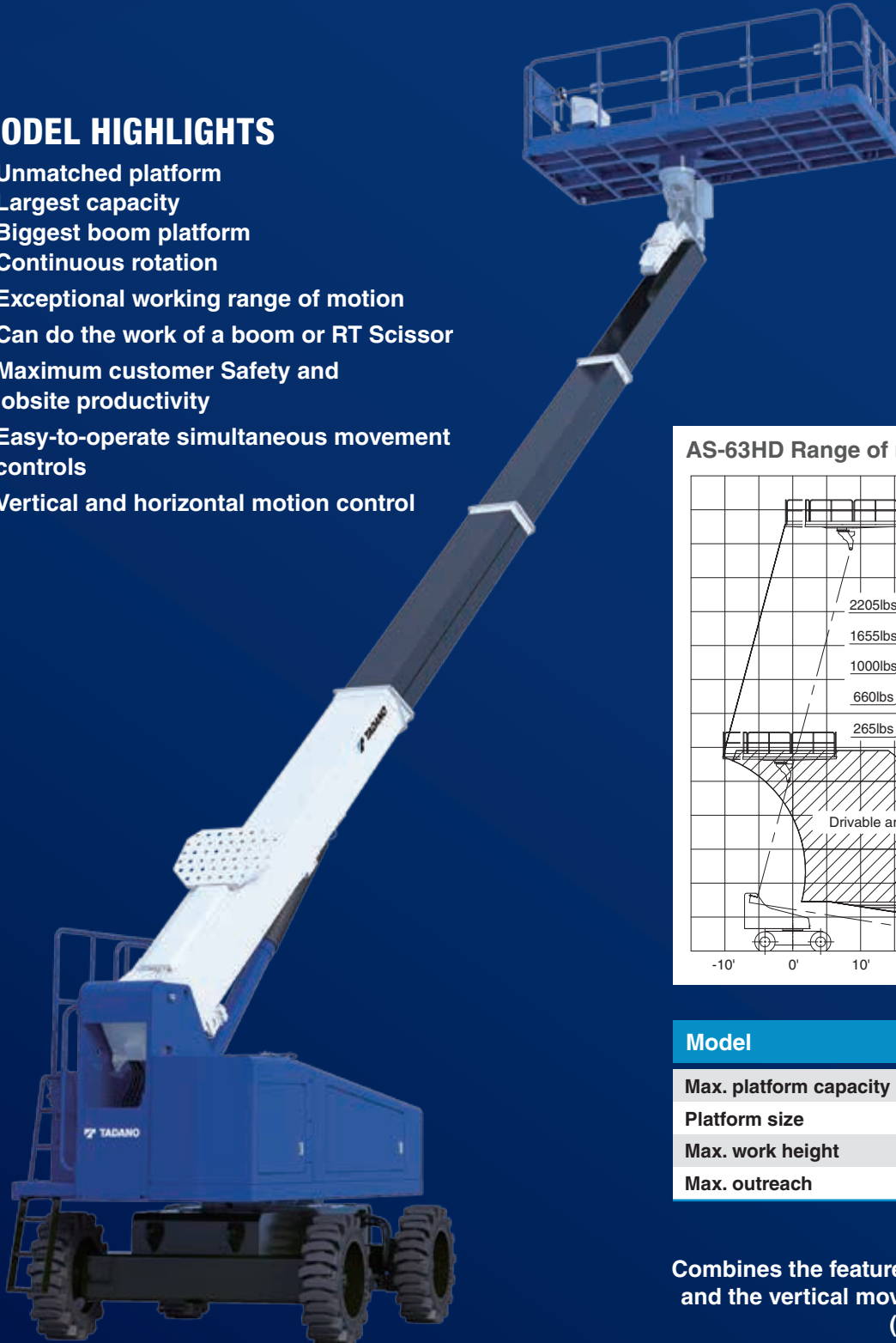


AS-63HD

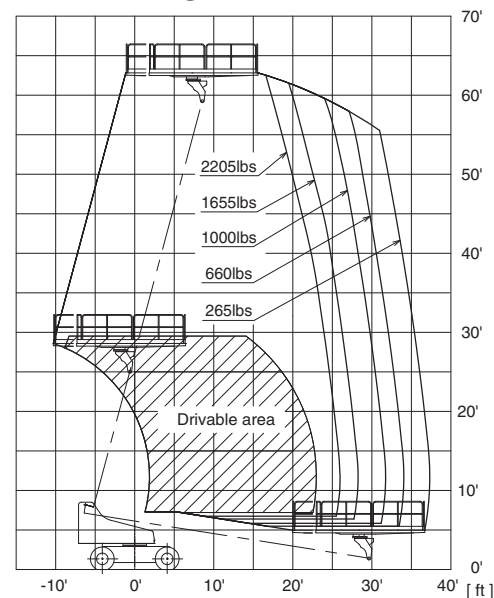
TELESCOPIC STICK BOOM

MODEL HIGHLIGHTS

- Unmatched platform
 - Largest capacity
 - Biggest boom platform
 - Continuous rotation
- Exceptional working range of motion
- Can do the work of a boom or RT Scissor
- Maximum customer Safety and jobsite productivity
- Easy-to-operate simultaneous movement controls
- Vertical and horizontal motion control



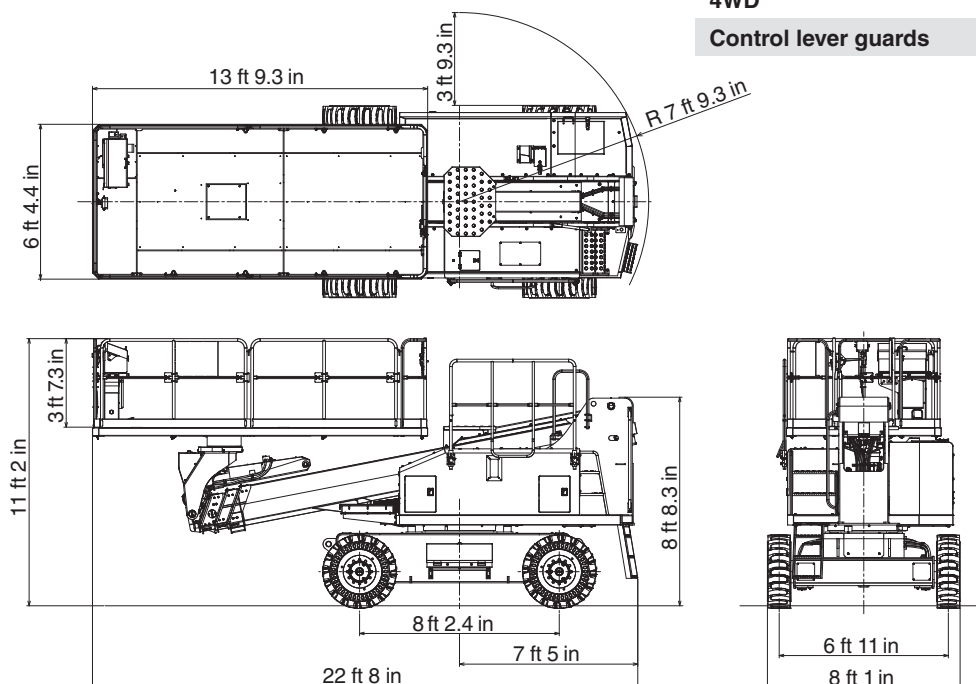
AS-63HD Range of motion



Model	AS-63HD
Max. platform capacity	2,205 lb
Platform size	13'9.3" x 6'4.4" x 3'7.3"
Max. work height	68'8"
Max. outreach	37'4"

Combines the features of a boom's outreach and the vertical movement of an RT scissor (2-model types in 1 unit)

Model		AS-63HD	
SPECIFICATIONS		POWER SOURCE	
Max. work height	68'8"	Engine type	Kubota V3800
Max. platform height	62'8"	Rated power	74.3 HP / 2200 min ⁻¹
Max. outreach	37'4"	Fuel tank capacity	50.2 gal
Allowable tilt	5°		
Max. platform capacity	2,205 lb		
Platform size (L x W x H)	13'9.3" x 6'4.4" x 3'7.3"		
Platform rotation	360° continuous		
Transport dims (L x W x H)	22'8" x 8'1" x 11'2"		
Machine weight	28,220 lb		
AC outlet to platform (120 V)			
TRAVEL		OPTIONS	
Max. travel speed	3.0 mph	Generator	Available soon
Max. gradeability	40%	Work light on platform	
		Generator installation support	
		Tool box	
		STANDARD FEATURES	
		Automatic moment and motion controller (AMC)	✓
		Drive enable system	✓
		4WD	✓
		Control lever guards	✓



For all our types:



March 2025. Unless otherwise specified, all information in this brochure refers to a standard equipment, and it is intended as general information only. No liability is assumed. Errors reserved. Product specifications and prices are subject to changes without notice. The photographs and/or drawings in this brochure are for illustrative purposes only. For correct and safe operation, the original operating manual and lifting capacity charts are essential. Failure to follow the corresponding Operator's Manual when using our equipment or failure to otherwise act responsibly may result in property damage, serious injury or death. The sole warranty applicable with respect to our equipment is the standard warranty as per general terms and conditions of sales and service (ask your local Tadano dealer for details), and Tadano makes no other warranty, express or implied. All rights reserved. Any use of the trademarks, logos, brand names and model names used herein is prohibited.

© Tadano Ltd. 2025

Tadano Ltd.

Kanda Square 18th Floor, 2-2-1 Kanda-Nishikicho, Chiyoda-ku, Tokyo 101-0054, Japan
Phone: +81-3-6811-7309 (International Division)

Tadano America Corporation

4242 West Greens Road, Houston, TX 77066, Phone: +1 (281) 869-00300 · Fax: +1 (281) 869-0040

tac.sales@tadano.com
www.tadano.com

